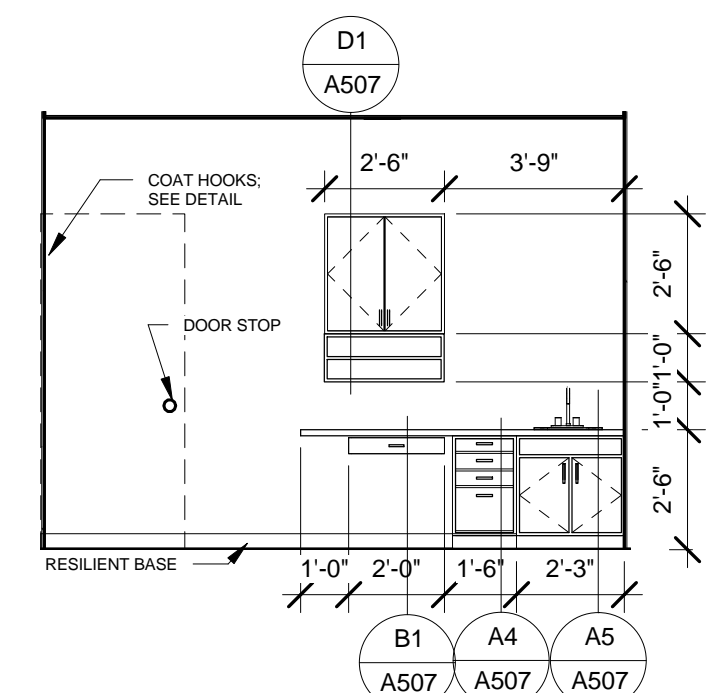
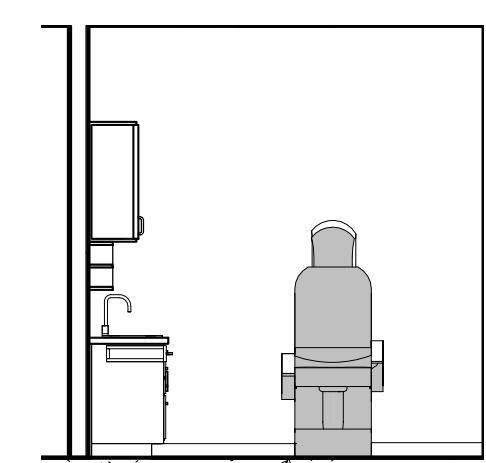


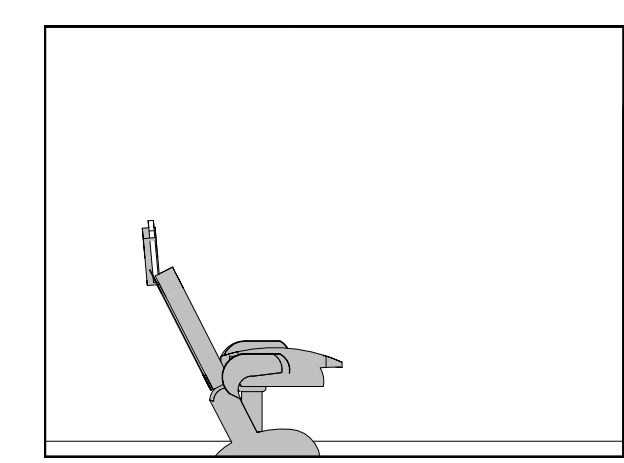
E4 Exam Rm A104 (Typical) - North
1/4" = 1'-0"



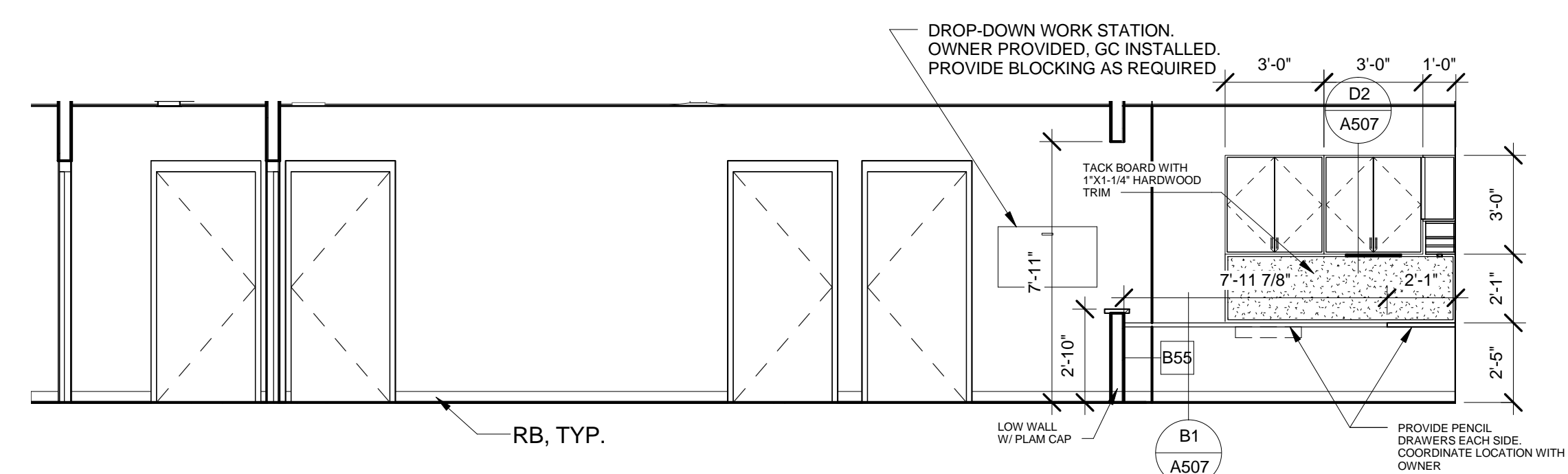
E3 Exam Rm A104 (Typical) East
1/4" = 1'-0"



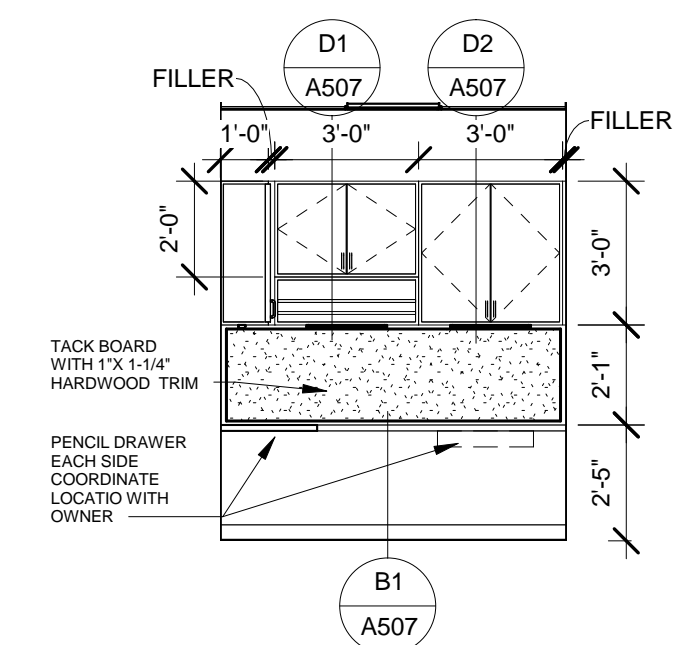
E2 Exam Rm A104 (Typical) South
1/4" = 1'-0"



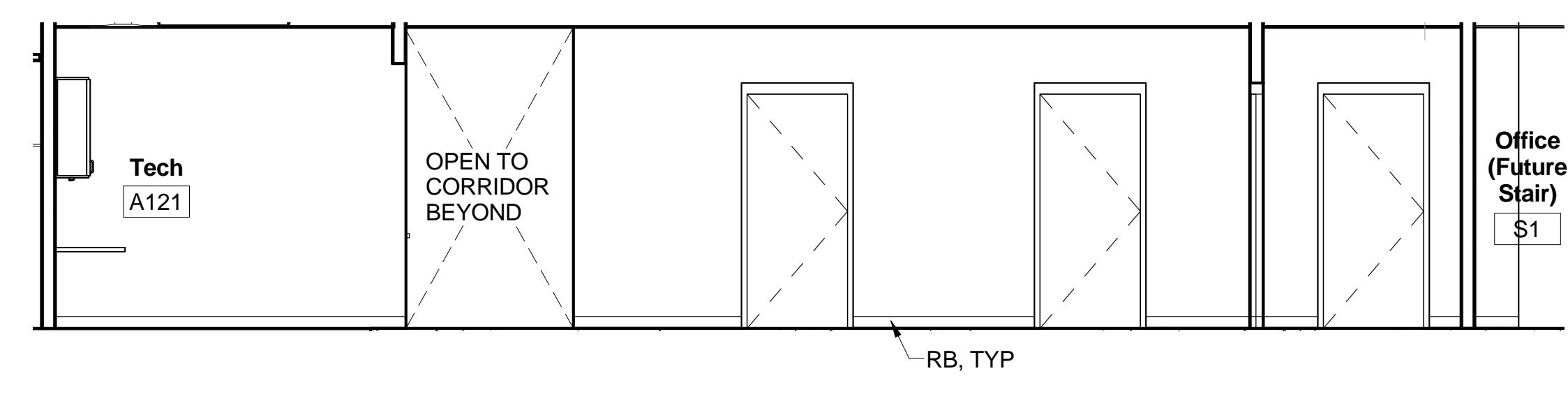
E1 Exam Rm A104 (Typical) West
1/4" = 1'-0"



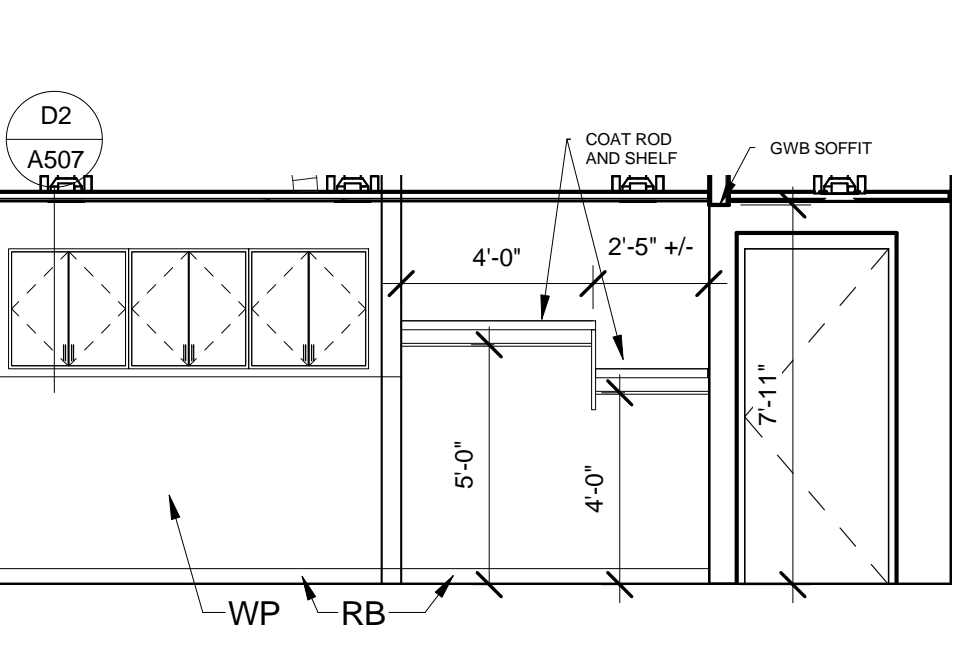
D5 Corr. A109 North
1/4" = 1'-0"



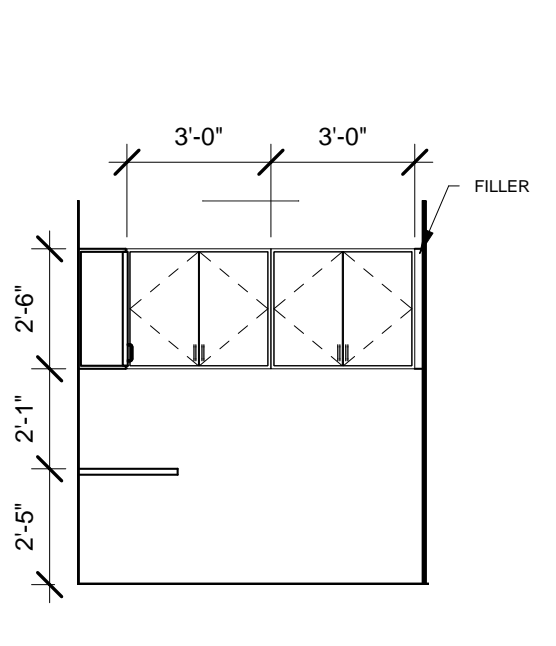
D3 Tech East
1/4" = 1'-0"



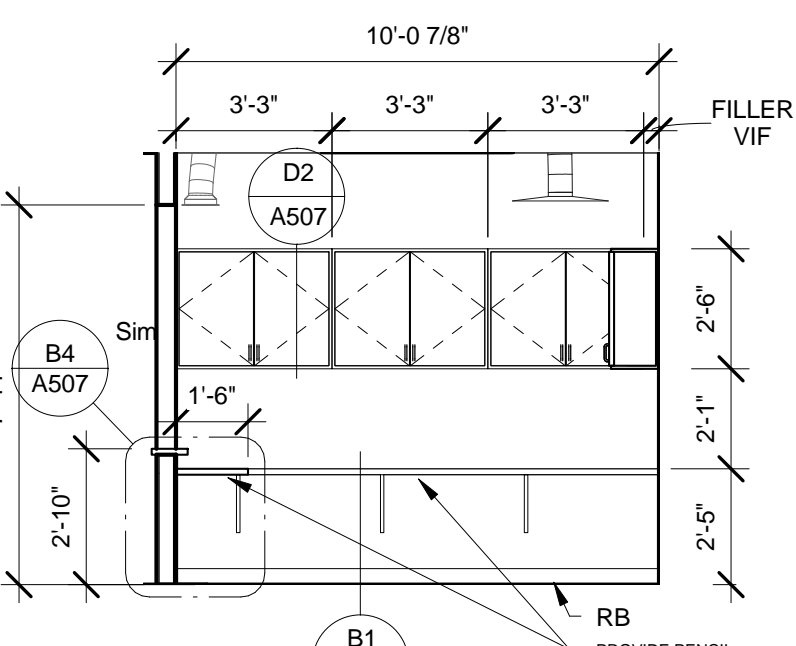
D2 Corr. A109 South
1/4" = 1'-0"



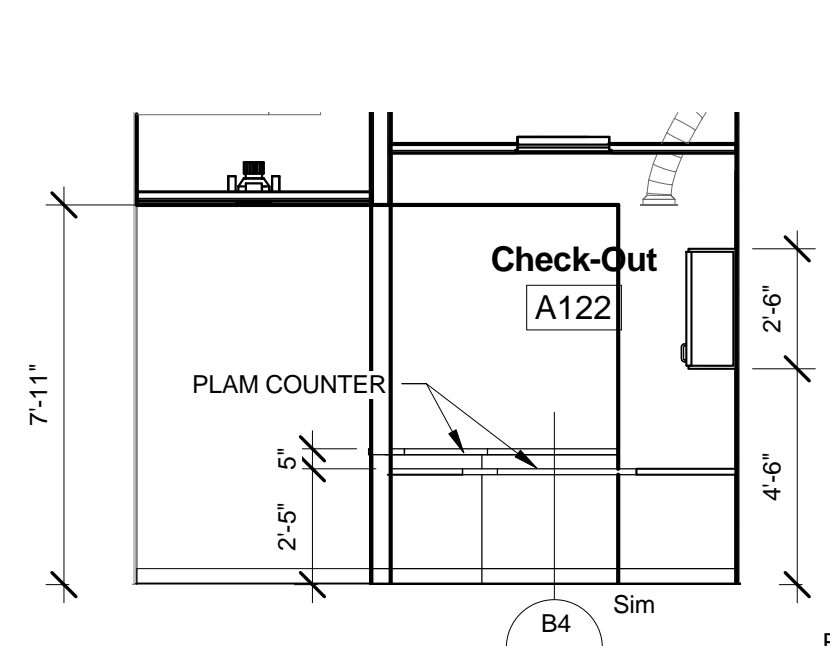
C7 Equip & Staff Coats
1/4" = 1'-0"



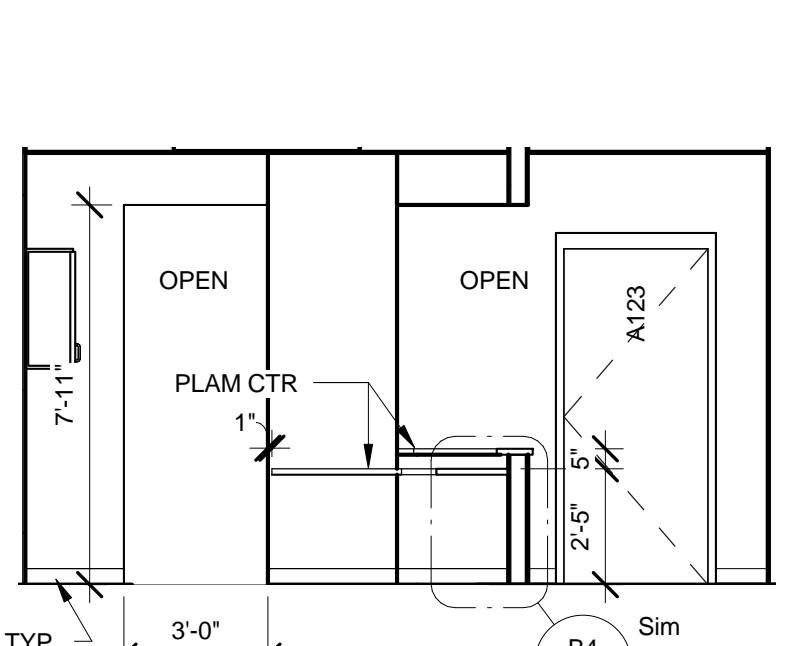
C6 Check-Out East
1/4" = 1'-0"



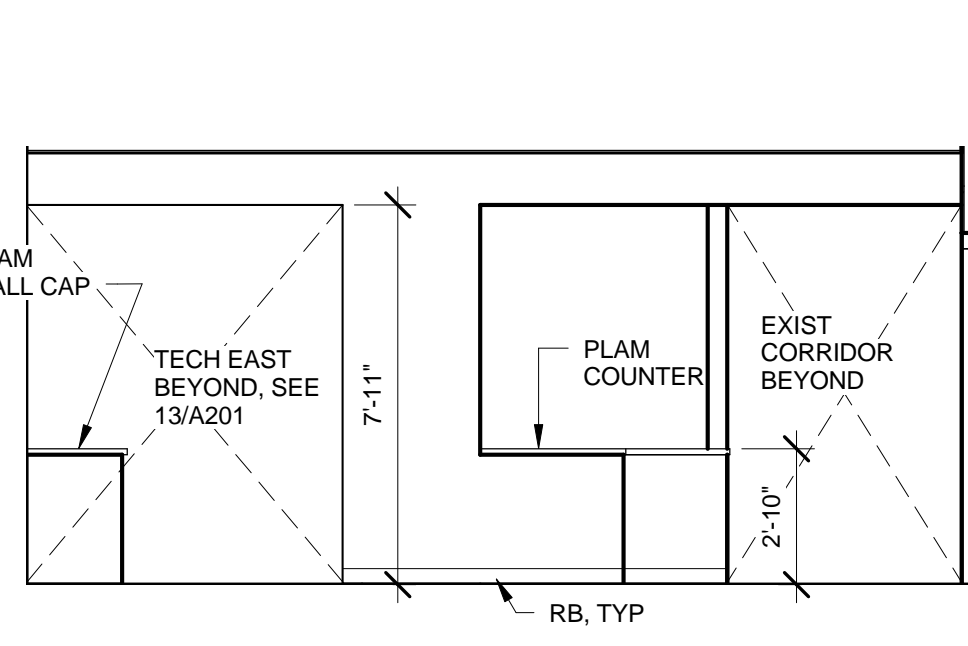
C5 Check-Out North
1/4" = 1'-0"



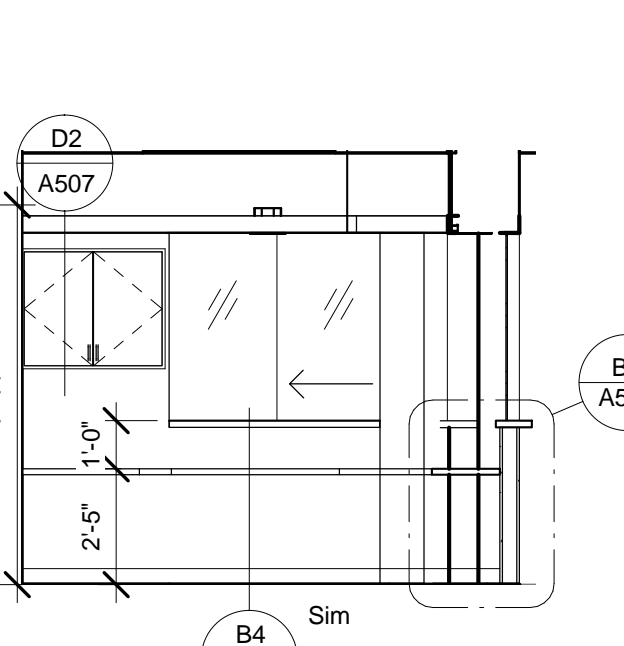
C4 Check-Out West
1/4" = 1'-0"



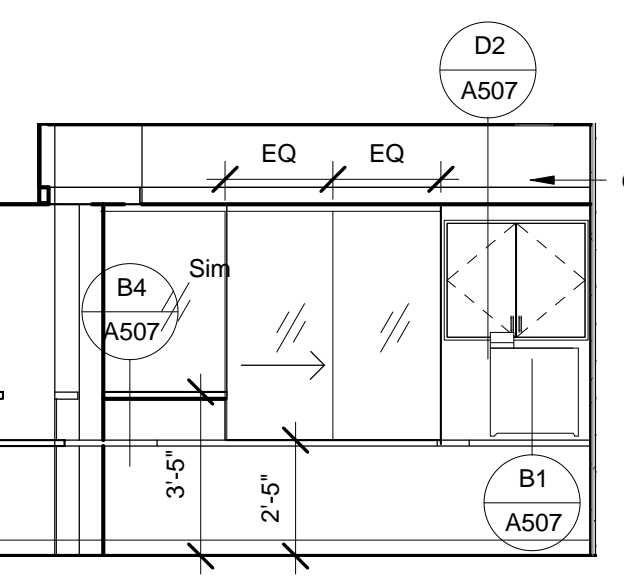
C3 Check-Out & Corr. - South
1/4" = 1'-0"



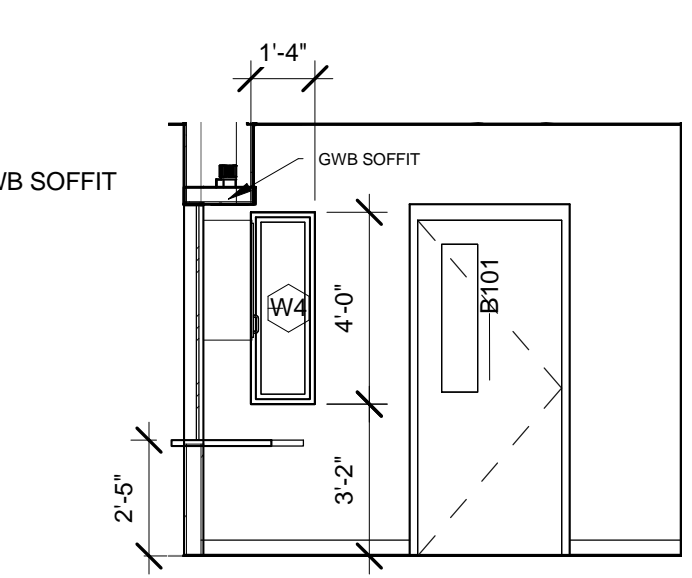
C2 Corr & Tech - East
1/4" = 1'-0"



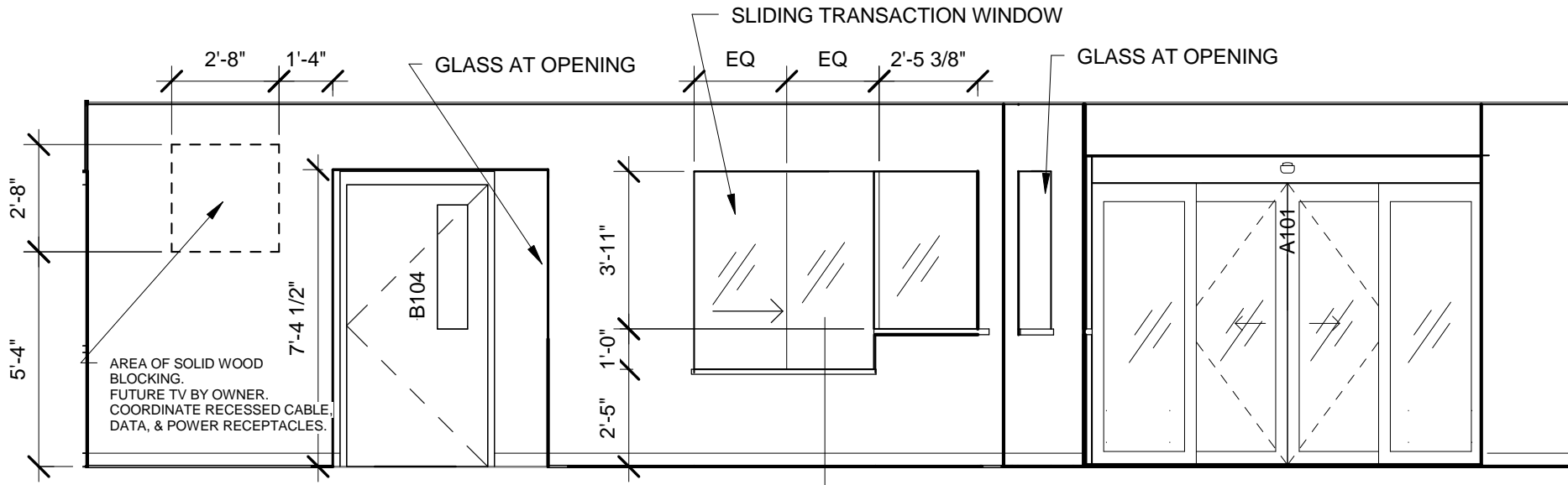
C1 Reception - North
1/4" = 1'-0"



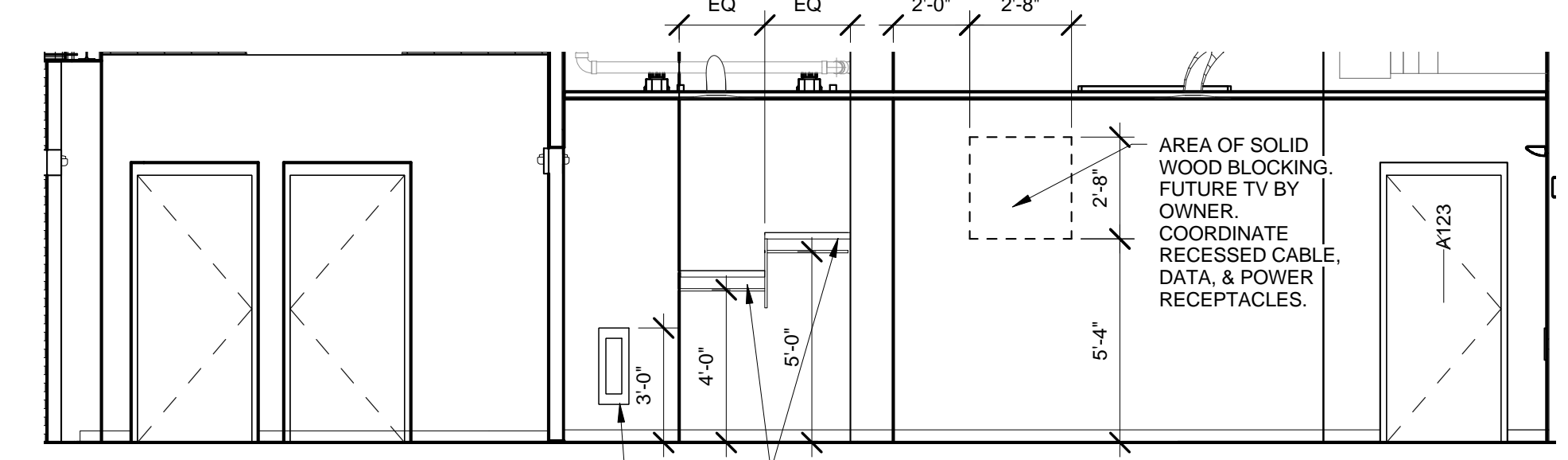
B5 Reception - East
1/4" = 1'-0"



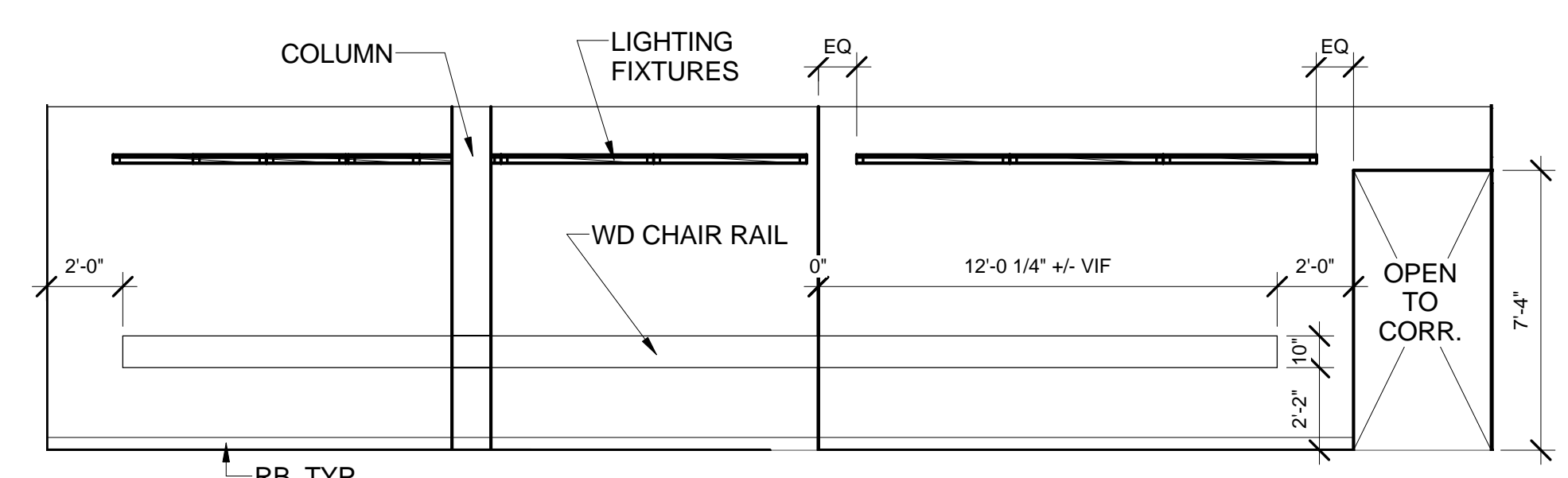
B4 Reception - South
1/4" = 1'-0"



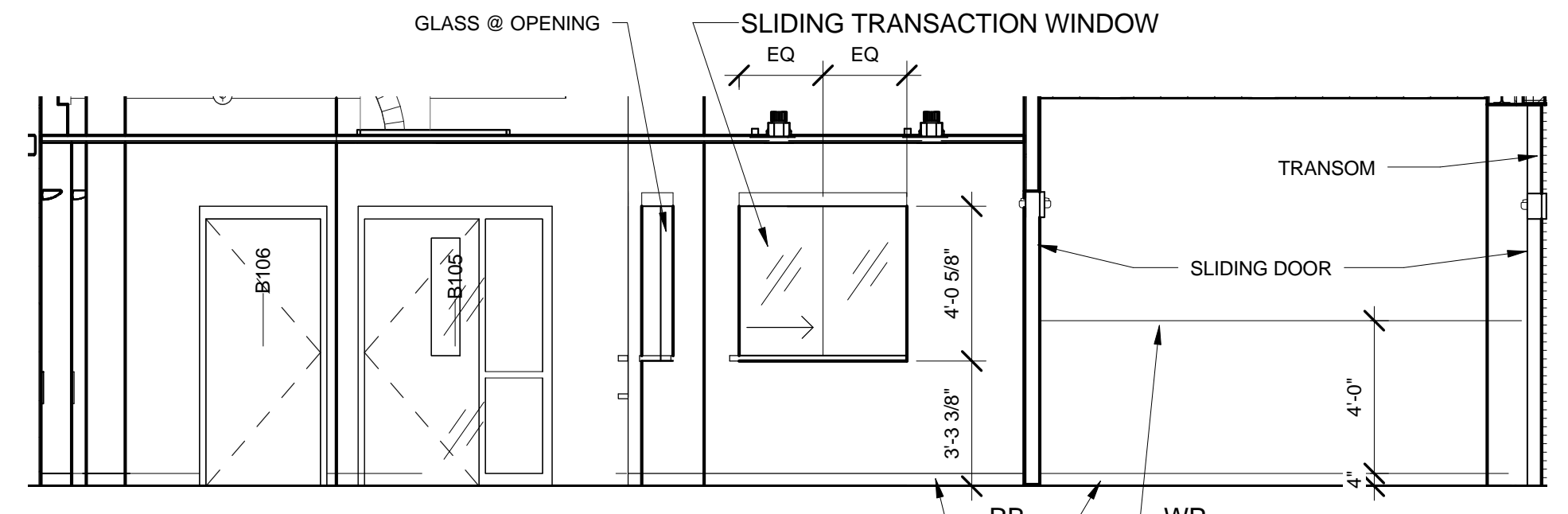
B3 Waiting Room West
1/4" = 1'-0"



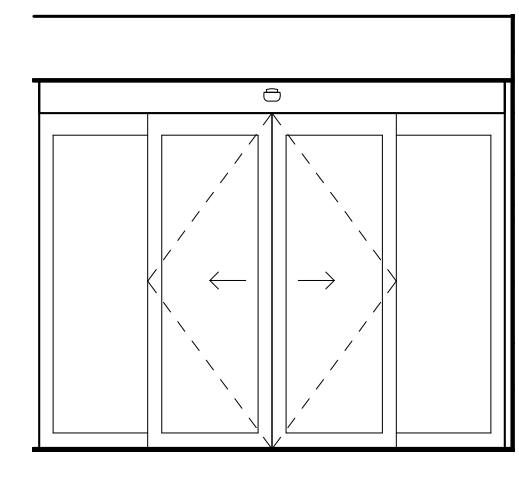
B2 Waiting & Entry North
1/4" = 1'-0"



A5 Waiting Room East
1/4" = 1'-0"



A3 Entry & Waiting South
1/4" = 1'-0"



A1 Vestibule East
1/4" = 1'-0"