

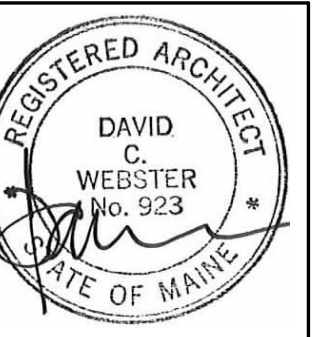


49 DARTMOUTH STREET  
PORTLAND, MAINE 04101  
207-775-1059  
www.pdtarchs.com

COPYRIGHT 2013  
PDT Architects

Reuse or reproduction of the contents of this document is not permitted without written permission of PDT Architects.

E. M. G.-PHASE 2-ADDITION & RENOVATION  
53 Sewall Street, Portland, ME 04102



JOB NO.  
12084

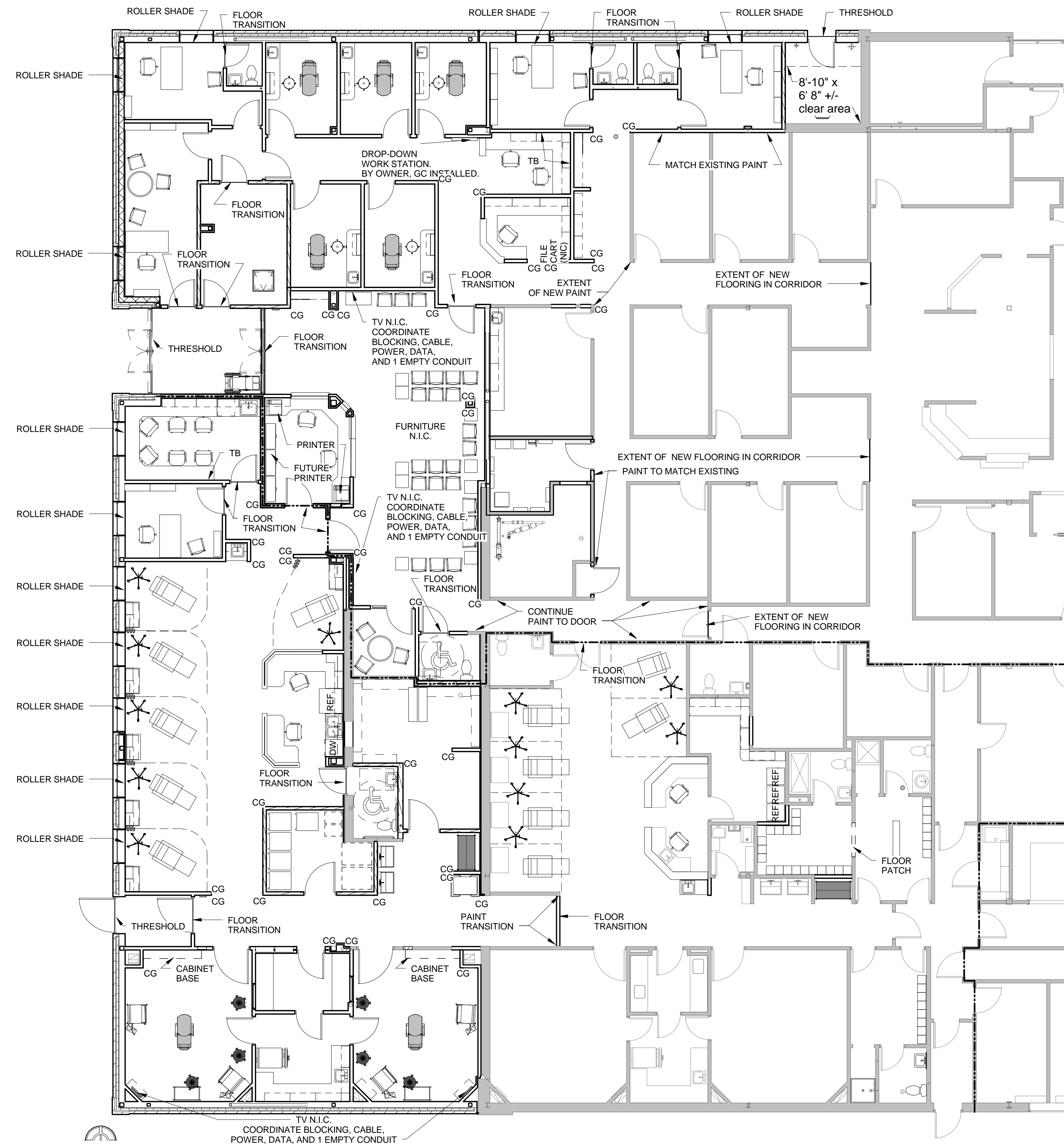
DRWN. CHK  
AJK

SCALE:  
As indicated

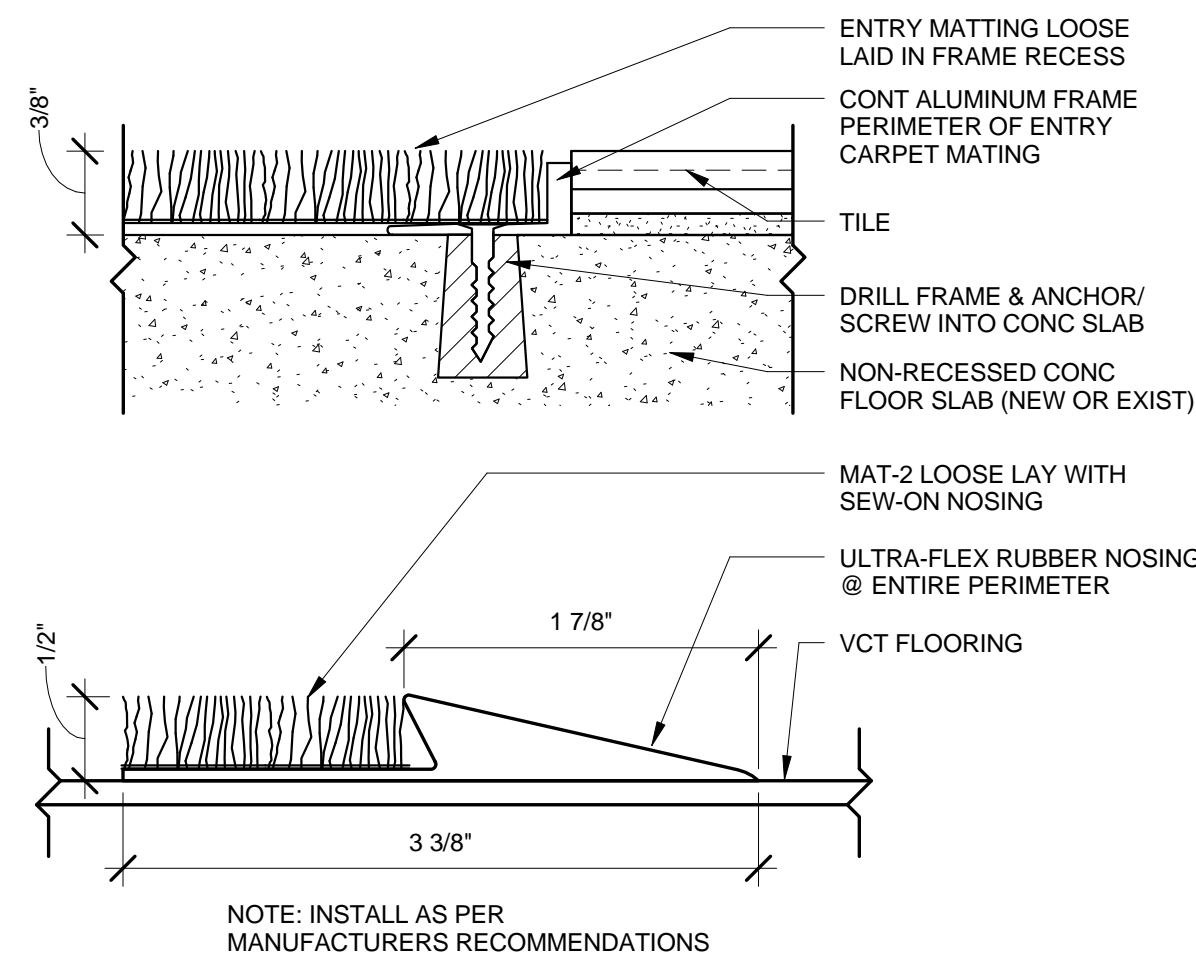
ISSUE  
July 11, 2013

TITLE  
FURNITURE, EQUIPMENT, & FINISHES PLAN

SHEET  
A103



A3 FURNITURE AND EQUIPMENT Area "A" & "B"  
1/8" = 1'-0"



D5 CARPET TO VCT TRANSITION  
12" = 1'-0"

SEE INTERIOR GENERAL NOTES ON A001.  
PROVIDE FLOOR LEVELER AS REQUIRED WHERE NEW SLABS MEET EXISTING CONSTRUCTION.  
PROVIDE TRANSITION STRIPS AT DISSIMILAR FLOORING MATERIALS.

Contractor shall install Owner supplied items including but not limited to:

- Soap Dispensers
- Paper Tower Dispenser
- Toilet paper Dispenser
- Sharps Containers
- Hand Sanitizer Dispensers
- TV Brackets
- Dropdown Work Stations
- Metal Lockers
- Locker Room Bench

Contractor installed and provided items including but not limited to:

- Mirrors
- Coat Hooks
- Corner Guards (CG)
- Wall Protection (WP)
- Window shades
- Call Station system
- Tack boards