

8" CMU - SEE MASONRY NOTES (SHEET S000) FOR REINFORCING

BRICK VENEER - SEE ARCH. DWGS.

SIDEWALK - SEE CIVIL DWGS.

CONT. 1/2" ISOLATION JOINT AND SEALANT

SLAB-ON-GRADE - SEE PLAN

FOUNDATION PLAN
0' - 0"

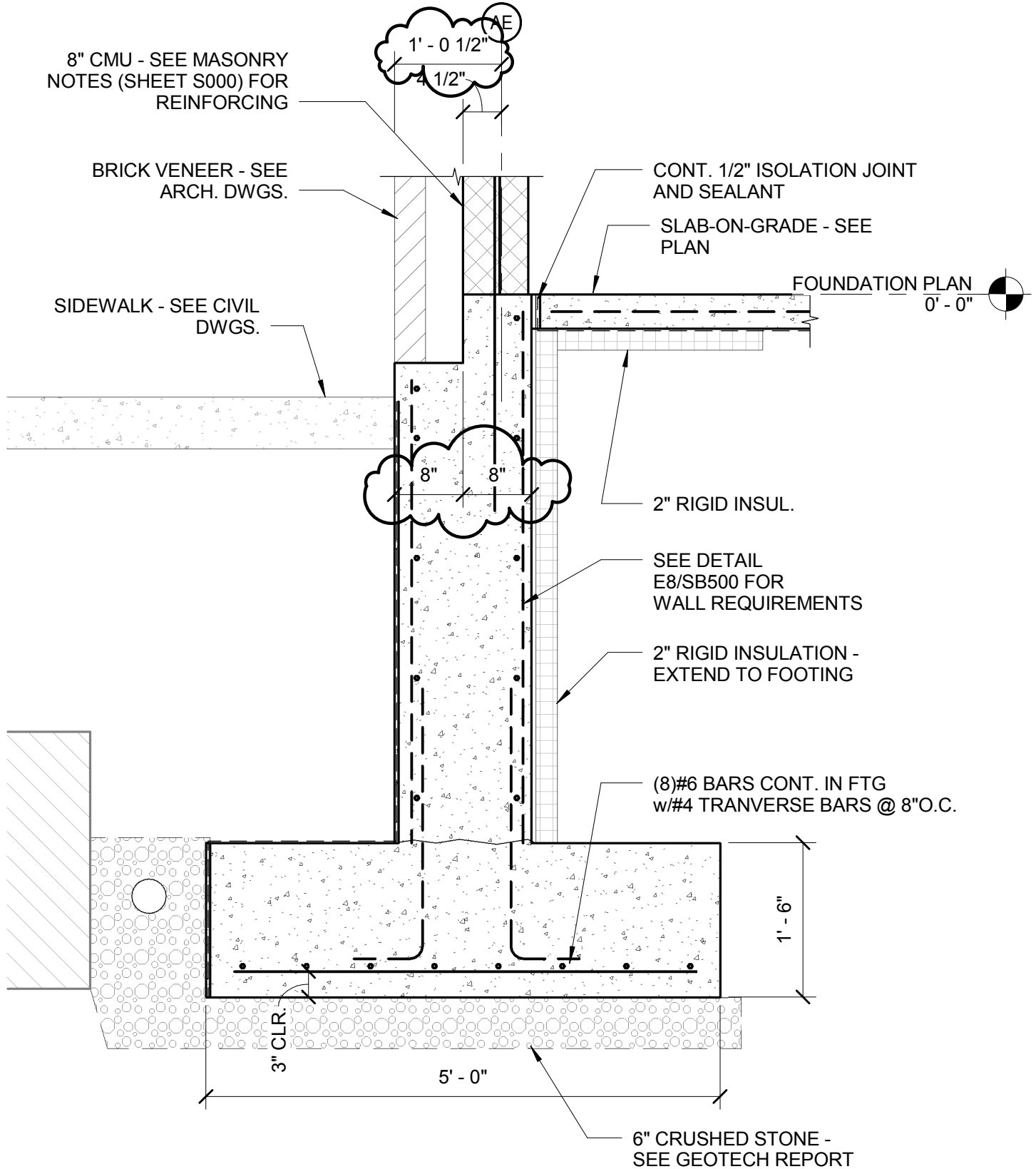
2" RIGID INSUL.

SEE DETAIL E8/SB500 FOR WALL REQUIREMENTS

2" RIGID INSULATION - EXTEND TO FOOTING

(8)#6 BARS CONT. IN FTG w/#4 TRANSVERSE BARS @ 8"O.C.

6" CRUSHED STONE - SEE GEOTECH REPORT



Checker

N:\Projects\2012\12064 - Eyecare Medical Group-Addition and Renovation\00 Drawing Files\12064_S.rvt



ARCHITECTURE
INTERIOR DESIGN
PLANNING

49 DARTMOUTH STREET
PORTLAND, MAINE 04101
www.pdtarchs.com

© 2013 PDT Architects

E.M.G.-PHASE 2-ADDTION & RENOVATION

53 Sewall Street, Portland, Maine 04102

TITLE
REVISED E1/SB500

JOB # 12084

DATE 08-14-2013

SCALE 3/4" = 1'-0"

SHEET

SKS-19