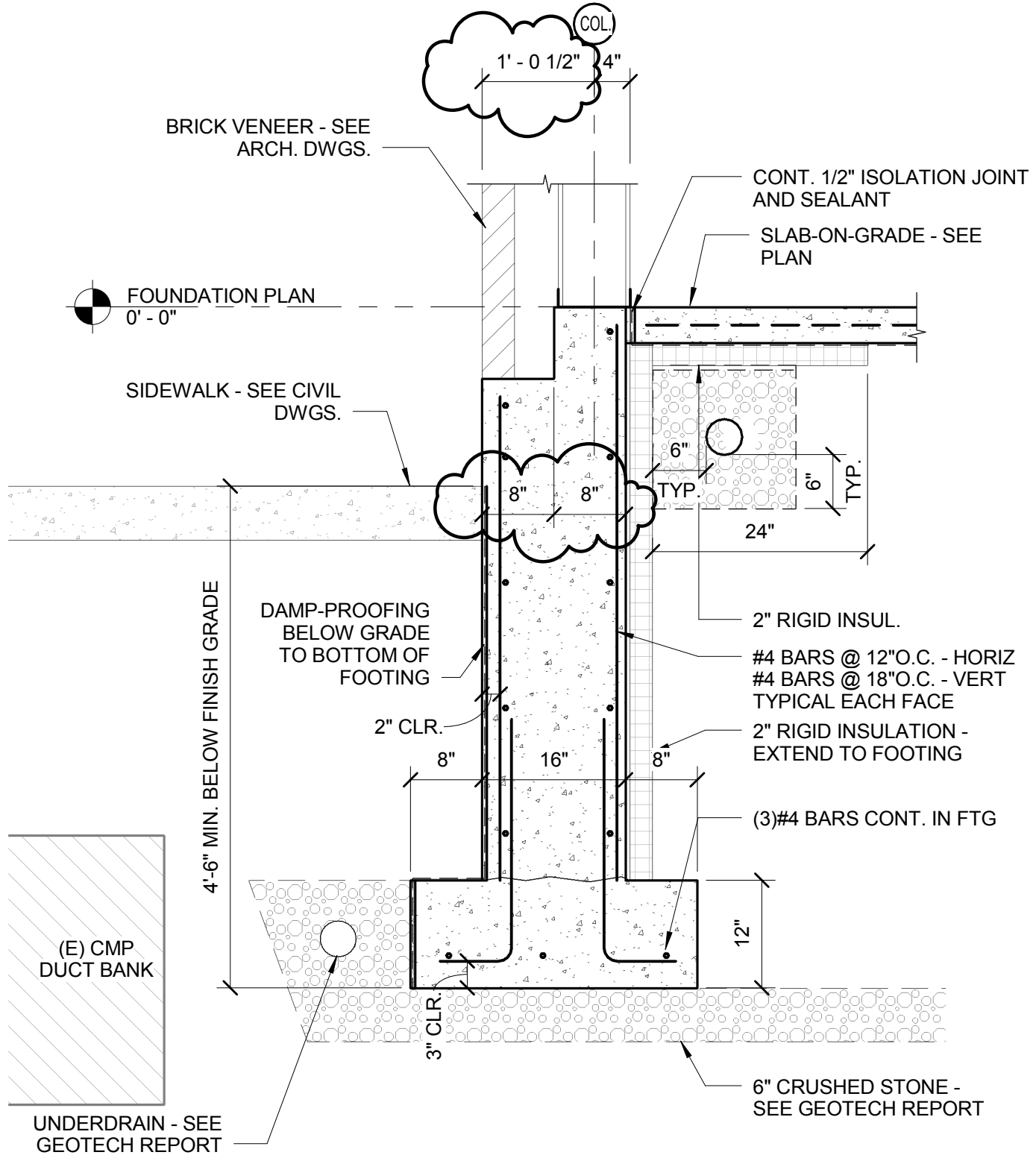


FOUNDATION PLAN
0' - 0"



BRICK VENEER - SEE ARCH. DWGS.

CONT. 1/2" ISOLATION JOINT AND SEALANT

SLAB-ON-GRADE - SEE PLAN

SIDEWALK - SEE CIVIL DWGS.

DAMP-PROOFING BELOW GRADE TO BOTTOM OF FOOTING

2" RIGID INSUL.

#4 BARS @ 12" O.C. - HORIZ
#4 BARS @ 18" O.C. - VERT
TYPICAL EACH FACE

2" RIGID INSULATION - EXTEND TO FOOTING

(3)#4 BARS CONT. IN FTG

(E) CMP DUCT BANK

UNDERDRAIN - SEE GEOTECH REPORT

6" CRUSHED STONE - SEE GEOTECH REPORT



ARCHITECTURE
INTERIOR DESIGN
PLANNING

49 DARTMOUTH STREET
PORTLAND, MAINE 04101
www.pdtarchs.com

© 2013 PDT Architects

E.M.G.-PHASE 2-ADDTION & RENOVATION
53 Sewall Street, Portland, Maine 04102

TITLE
REVISED E8/SB500

JOB # 12084
DATE 08-14-2013
SCALE 3/4" = 1'-0"

SHEET
SKS-18

Checker

N:\Projects\2012\12064 - Eyecare Medical Group-Addition and Renovation\00 Drawing Files\12064_S.rvt