

E.S. Boulos Co.

ARCHITECT/ENGINEER

GENERAL NOTES:

SUBMISSION DATES

DATE SUBMISSION TYPE

REV.	DATE	DESCRIPTION	BY

PROJECT NAME AND ADDRESS  
**Orthopedic Associates**  
**OSC-Pre Op**

33 Sewall St  
 Portland, ME  
 04103

CADD FILE:

REF. DWG:

REF. DWG:

DRAWN BY:

PLOT DATE:

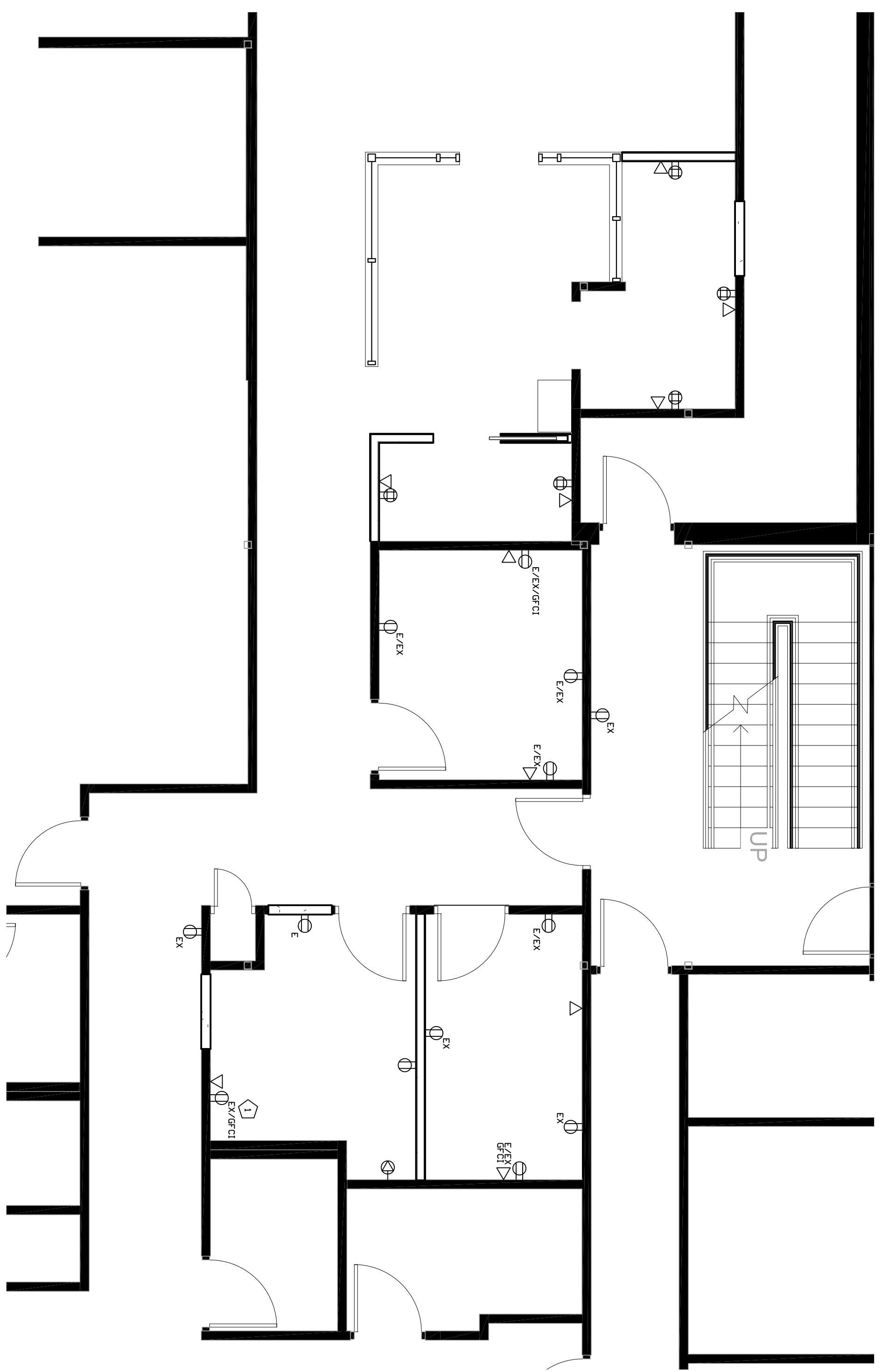
SCALE: 1/4" = 1'

DRAWING TITLE

**Power**

DRAWING NUMBER

**E-102**



- Legend
- ⊕ Specialty Outlet - Coordinate w/Equipment
  - ⊕ Duplex Outlet
  - ⊕ Double Duplex Outlet
  - ▽ Voice/Data Connection
  - E Emergency
  - R Replace
  - EX Existing to Remain
  - ⊕ Connect Existing outlet to Emergency Power

24"x36"

A B C D E F G H J K L M N

1 2 3 4 5 6 7 8 9 10 11 12 13 14 15 16 17