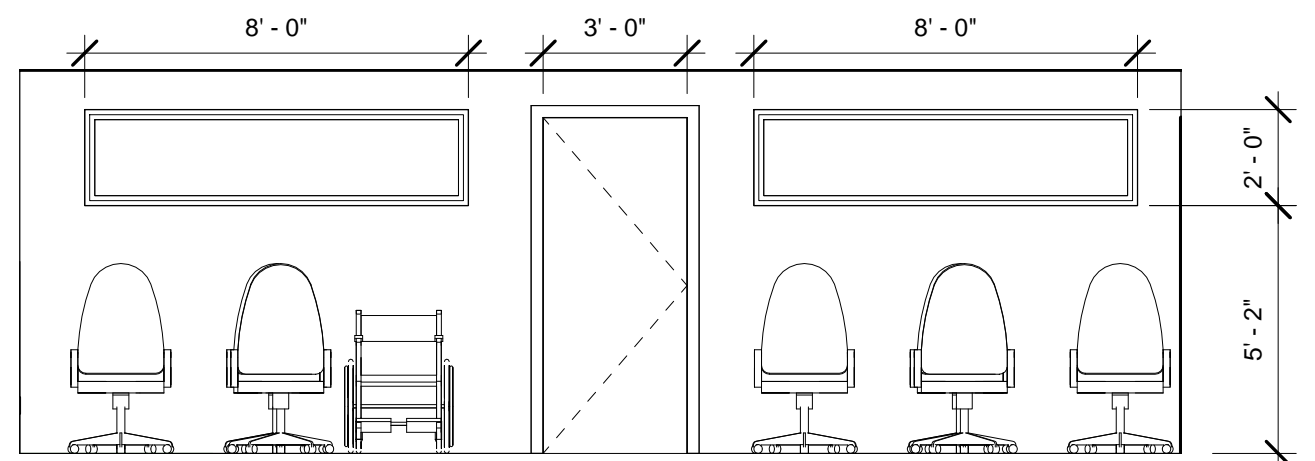
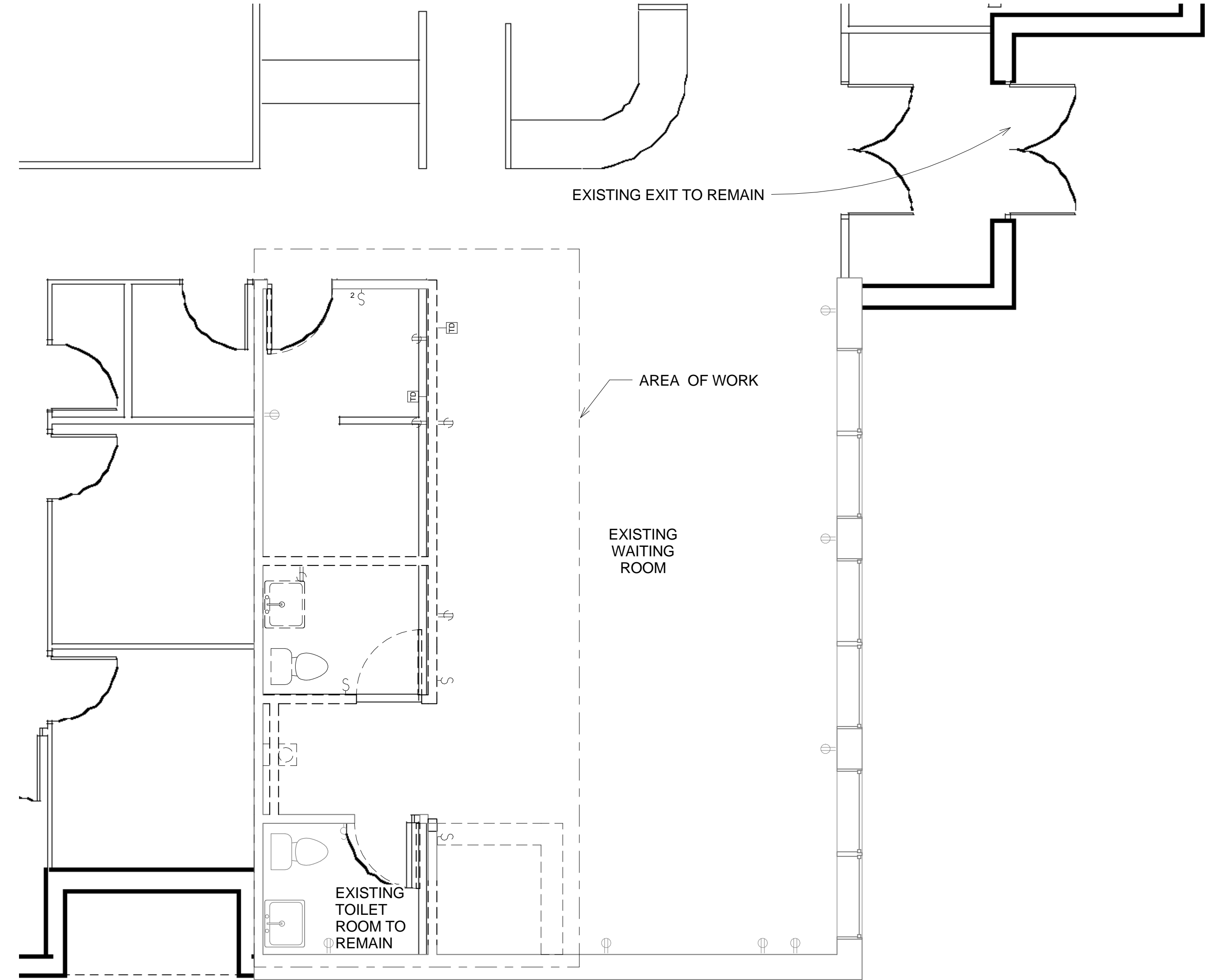


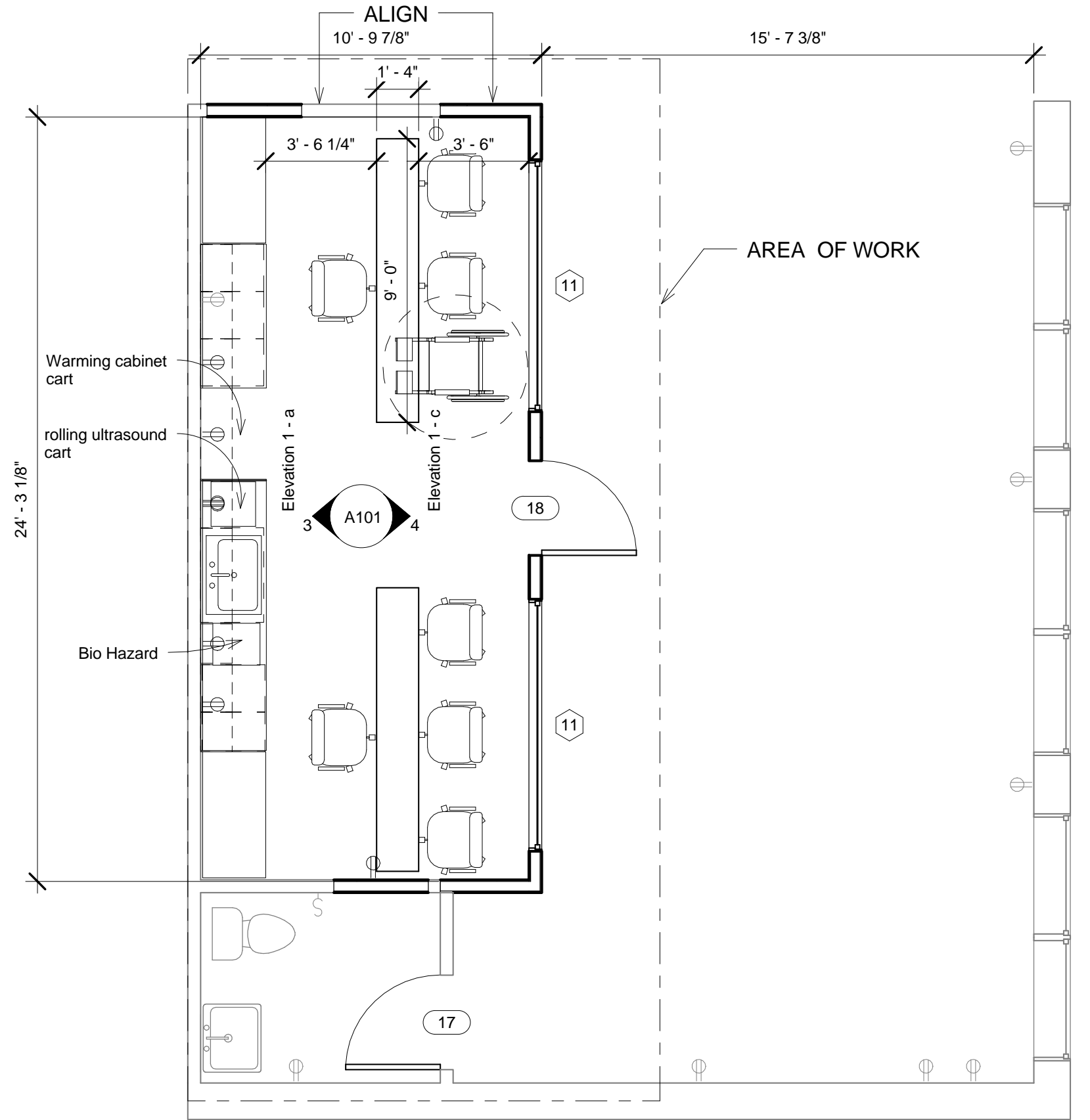
3 Elevation 1 - a
1/4" = 1'-0"



4 Elevation 1 - c
1/4" = 1'-0"



1 OT Existing/ Demolition
1/4" = 1'-0"



2 OT New Construction Plan
1/4" = 1'-0"



49 DARTMOUTH STREET
PORTLAND, MAINE 04101
207-775-1059
www.pdtarchts.com

COPYRIGHT
PDT Architects
Reuse or reproduction of the
contents of this document is not
permitted without written
permission of PDT Architects.

OA Centers for Orthopaedics - OT/PT Renovations
 33 Sewall Street, Portland Maine

JOB NO.
Project Number

DRWN. CHK
RSC

SCALE:
As indicated

ISSUE
Issue for Permit
11 October 2012

TITLE
OT Demolition &
New Construction
Plans

SHEET

A101