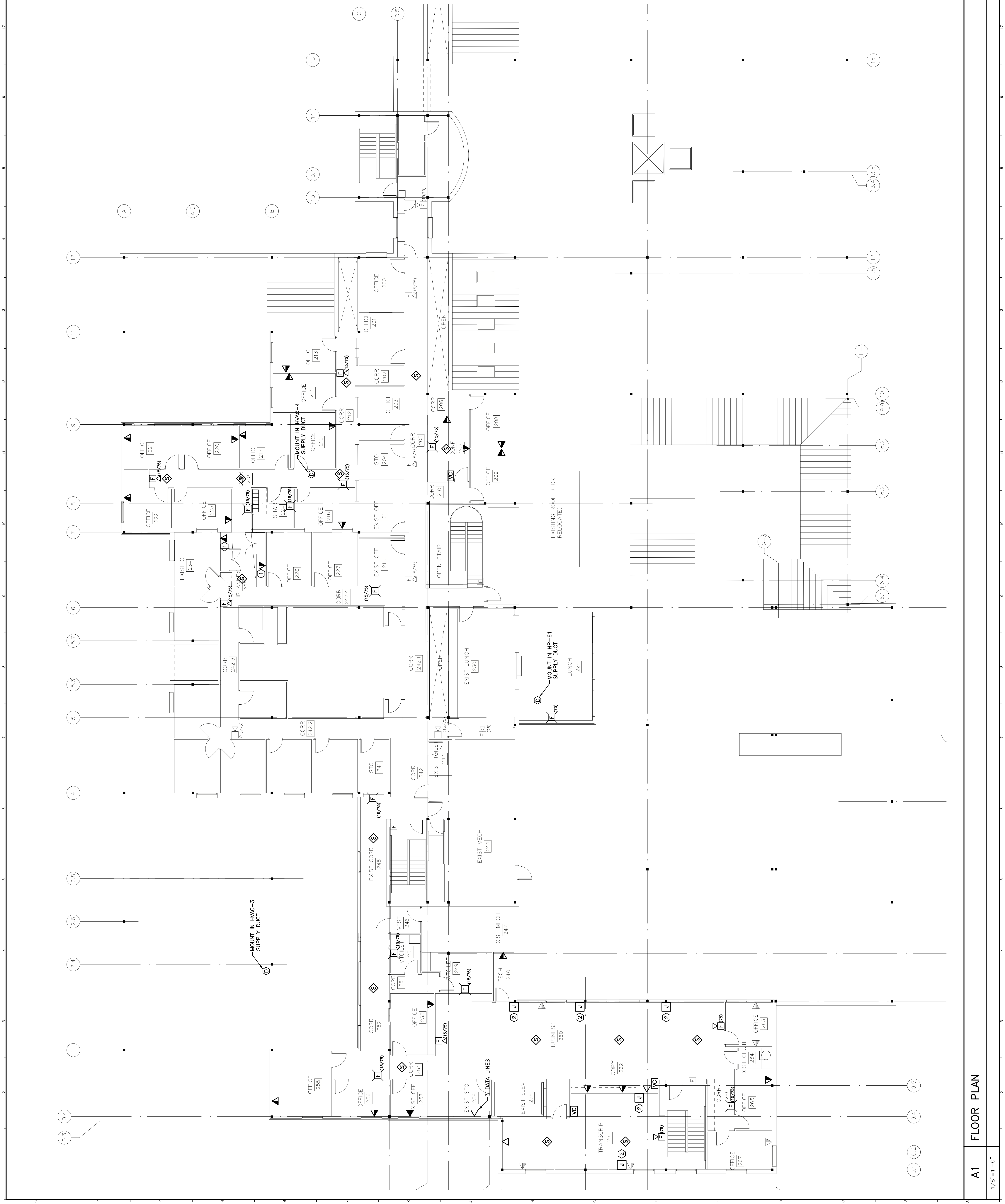


NOTE:

- SEE SHEET E-001 FOR LEGEND AND GENERAL NOTES.
- RELOCATE EXISTING PACING SPEAKERS AT LOCATIONS SHOWN AND PROVIDE ADDITIONAL SPEAKERS AS REQUIRED.
- EXTEND EXISTING FIRE ALARM SYSTEM TO NEW DEVICES SHOWN. PROVIDE ALL CONDUIT, WIRING, DEVICES, EQUIPMENT, AND PROGRAMMING FOR A COMPLETE AND OPERABLE SYSTEM.

KEYED NOTE:

- ① MOUNT VOICE/DATA OUTLET 42" AFF TO BOTTOM OF DEVICE.
- ② PROVIDE 4" SQUARE W/ 1" CONDUIT TO ABOVE CEILING FOR VOICE/DATA WIRING TO MODULAR FURNITURE.



REV.	DESCRIPTION	DATE
0	ISSUED FOR CONSTRUCTION	2-25-05

ISSUED FOR CONSTRUCTION
2-25-05

CURRENT ISSUE STATUS:



ARCHITECTURE ENGINEERING PLANNING
 144 Fore Street P.O. Box 618
 Portland, Maine 04104
 tel. (207) 772-3846
 fax. (207) 772-1070

ORTHOPAEDIC ASSOCIATES, PA
BUILDING EXPANSION
 33 SEWALL ST., PORTLAND, MAINE

PROJECT: **SECOND FLOOR SYSTEMS PLAN**

SHEET TITLE: **SECOND FLOOR SYSTEMS PLAN**
 SCALE: 1/8"=1'-0"
 PROJECT MANAGER: DJT
 JOB CAP/DRAWN: LAM
 A/E OF RECORD: DJT
 SHEET NO.: EY102-04184
 PROJECT NO.: 04184

DATE: 2-25-05
 GRAPHIC SCALE: 0'
 SHEET No. **EY102**

A1 FLOOR PLAN

1/8"=1'-0"