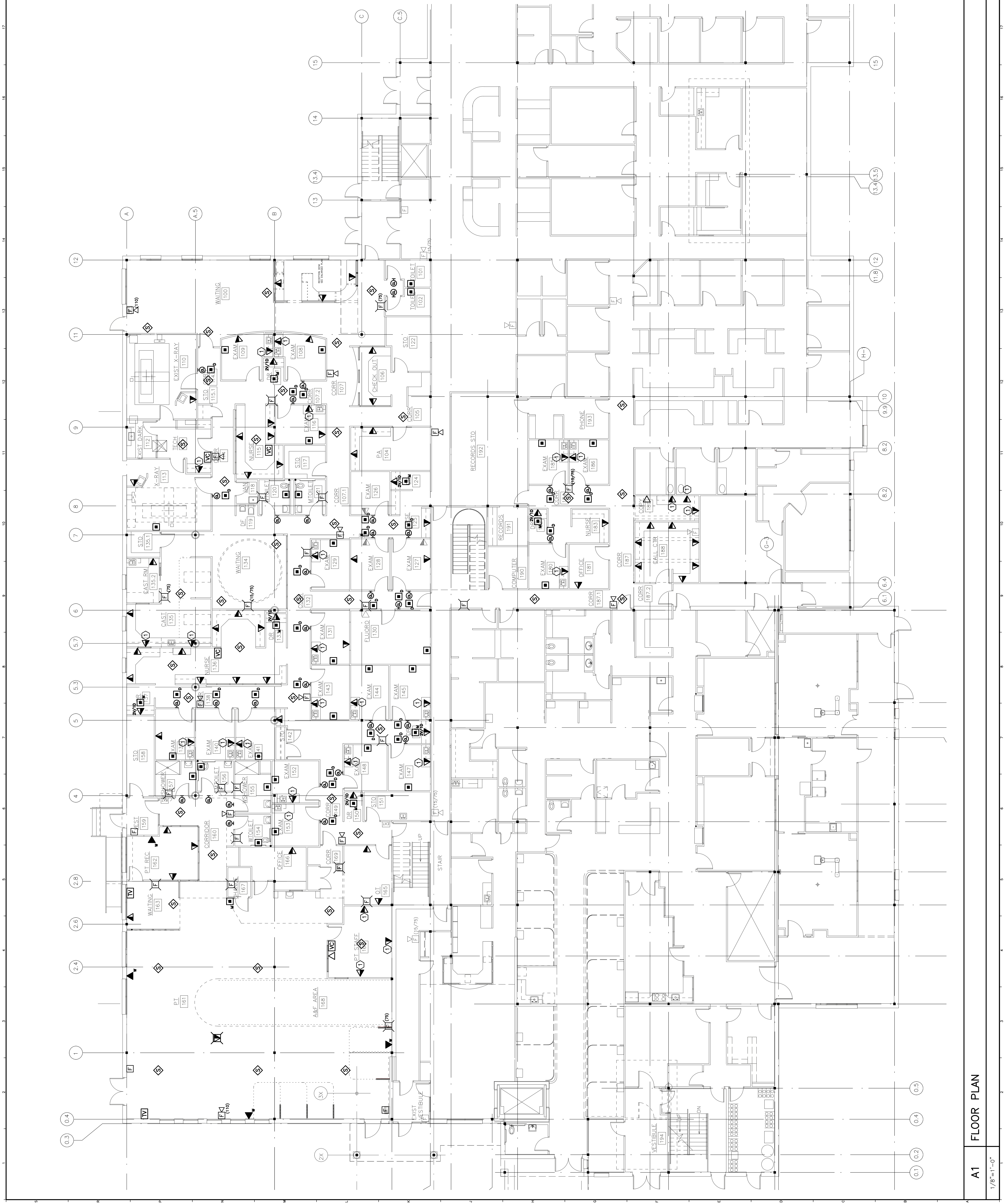


NOTE:

1. SEE SHEET E-001 FOR LEGEND AND GENERAL NOTES.
2. RELOCATE EXISTING PACING SPEAKERS AT LOCATIONS SHOWN AND PROVIDE ADDITIONAL SPEAKERS AS REQUIRED.
3. EXTEND EXISTING FIRE ALARM SYSTEM TO NEW DEVICES SHOWN. PROVIDE ALL CONDUIT, WIRING, DEVICES, EQUIPMENT, AND PROGRAMMING FOR A COMPLETE AND OPERABLE SYSTEM.

KEYED NOTE:

- 1 MOUNT VOICE/DATA OUTLET 42" AFF TO BOTTOM OF DEVICE.



REV.	ISSUED FOR CONSTRUCTION	DESCRIPTION	DATE
0	2-25-05		

ISSUED FOR CONSTRUCTION
2-25-05

CURRENT ISSUE STATUS:

SM RT
ARCHITECTURE ENGINEERING PLANNING
144 Foss Street P.O. Box 618
Portland, Maine 04104
tel. (207) 772-3846
fax. (207) 772-1070

ORTHOPAEDIC ASSOCIATES, PA
BUILDING EXPANSION
33 SEWALL ST., PORTLAND, MAINE

PROJECT: **FIRST FLOOR SYSTEMS PLAN**

SHEET TITLE:	1/8"=1'-0"	DATE:	2-25-05
SCALE:	1/8"=1'-0"	GRAPHIC SCALE:	0'
PROJECT MANAGER:	DJT	JOB CAP/DRAWN:	LAM
A/E OF RECORD:	DJT	SHEET NO.:	EY101
SMART CAD FILE:	EY101-04184	PROJECT NO.:	04184

A1 FLOOR PLAN

1/8"=1'-0"