

**NOTES:**

- SEE SHEET E-001 FOR LEGEND AND GENERAL NOTES.
- ALL UNDERCABINET LIGHTING AND VIEWBOXES SHOWN SHALL BE 120V AND CONNECTED TO THE 120V CIRCUIT SERVING THE ROOM INDICATED ON THE POWER PLANS.
- UTILIZE EXISTING LIFE SAFETY LIGHTING CIRCUIT FOR SECOND FLOOR TO FEED NEW EMERGENCY LIGHTS.

**KEYED NOTES:**

- REPLACE EXISTING TRACK LIGHTING HEADS WITH NEW 150 WATT PAR 36 MEDIUM BASE HEADS THAT ARE COMPATIBLE WITH EXISTING TRACK.
- INSTALL 2" UNDERCABINET LIGHTING IN ARCHITECTURAL CASEWORK. COORDINATE W/ARCHITECTURAL PRIOR TO WORK.

REV.	DESCRIPTION	DATE
0	ISSUED FOR CONSTRUCTION	2-25-05

**ISSUED FOR CONSTRUCTION**  
**2-25-05**

CURRENT ISSUE STATUS:

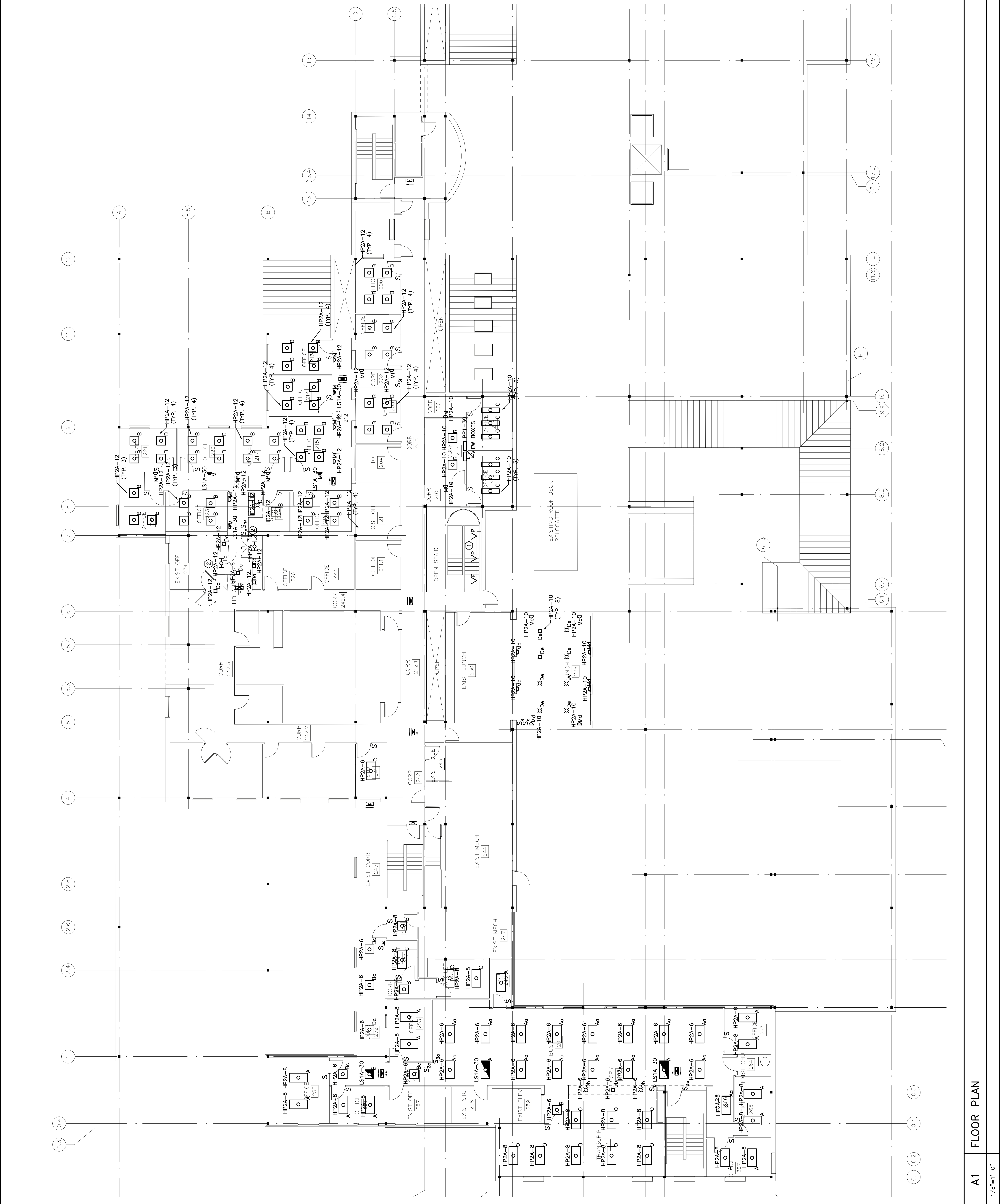


ARCHITECTURE ENGINEERING PLANNING  
 144 Foss Street P.O. Box 618  
 Portland, Maine 04104  
 tel. (603) 772-3846  
 fax. (603) 772-1070

**ORTHOPAEDIC ASSOCIATES, PA**  
**BUILDING EXPANSION**  
 33 SEWALL ST., PORTLAND, MAINE

PROJECT: **SECOND FLOOR LIGHTING PLAN**

SHEET TITLE:	1/8"=1'-0"	DATE:	2-25-05
SCALE:	1/8"=1'-0"	GRAPHIC SCALE:	0'
PROJECT MANAGER:	DJT	JOB CAP/DRAWN:	LAM
A/E OF RECORD:	DJT	SHEET NO.:	EL102
PROJECT NO.:	04184		



**A1 FLOOR PLAN**

1/8"=1'-0"