

**NOTE:**

- 1. SEE SHEET E-001 FOR LEGEND AND GENERAL NOTES.
- 2. ALL UNDERCABINET LIGHTING AND VIEWBOXES SHOWN SHALL BE 120V AND CONNECTED TO THE 120V CIRCUIT SERVING THE ROOM INDICATED ON THE POWER PLANS.

**KEYED NOTE:**

- Ⓚ FEED LIGHTS FROM EXTERIOR LIGHTING CIRCUIT. CANOPY LIGHTS TO BE CONTROLLED BY SAME CONTROL AS EXISTING EXTERIOR LIGHTS.

REV.	ISSUED FOR CONSTRUCTION	DESCRIPTION	DATE
0			2-25-05

**ISSUED FOR CONSTRUCTION  
2-25-05**

CURRENT ISSUE STATUS:



ARCHITECTURE ENGINEERING PLANNING  
SMRT

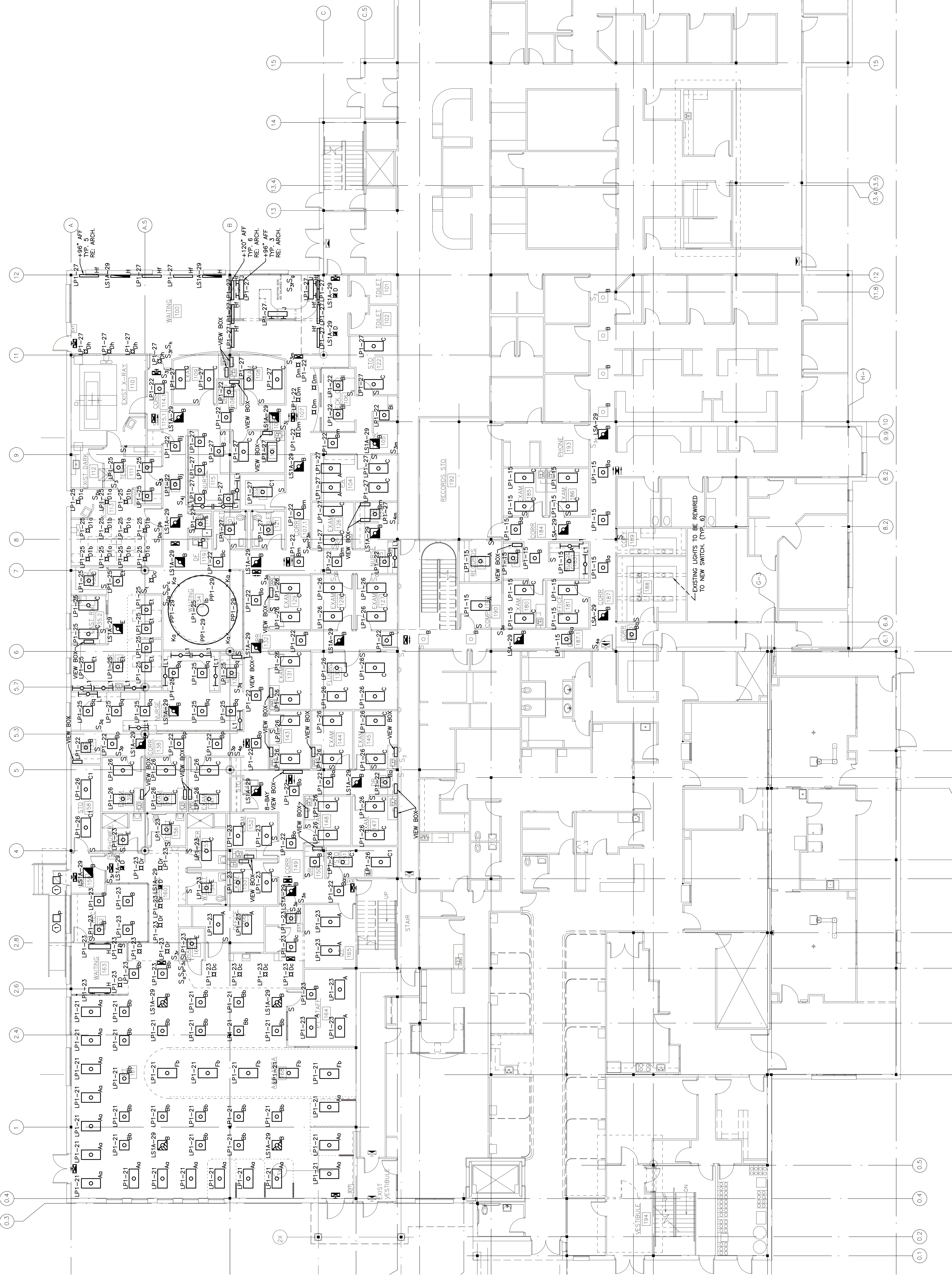
144 Four Street P.O. Box 618  
Portland, Maine 04104  
tel. (207) 772-3846  
fax. (207) 772-1070

**ORTHOPAEDIC ASSOCIATES, PA  
BUILDING EXPANSION**  
33 SEWALL ST., PORTLAND, MAINE

**FIRST FLOOR  
LIGHTING PLAN**

SHEET TITLE: 1/8"=1'-0" DATE: 2-25-05  
PROJECT MANAGER: DJT GRAPHIC SCALE: 0"  
JOB CAP/DRAWN: LAM  
A/E OF RECORD: DJT SHEET No. EL101

PROJECT NO.: 04184  
SHEET No.: EL101  
PROJECT No.: 04184



**A1 FLOOR PLAN**  
1/8"=1'-0"