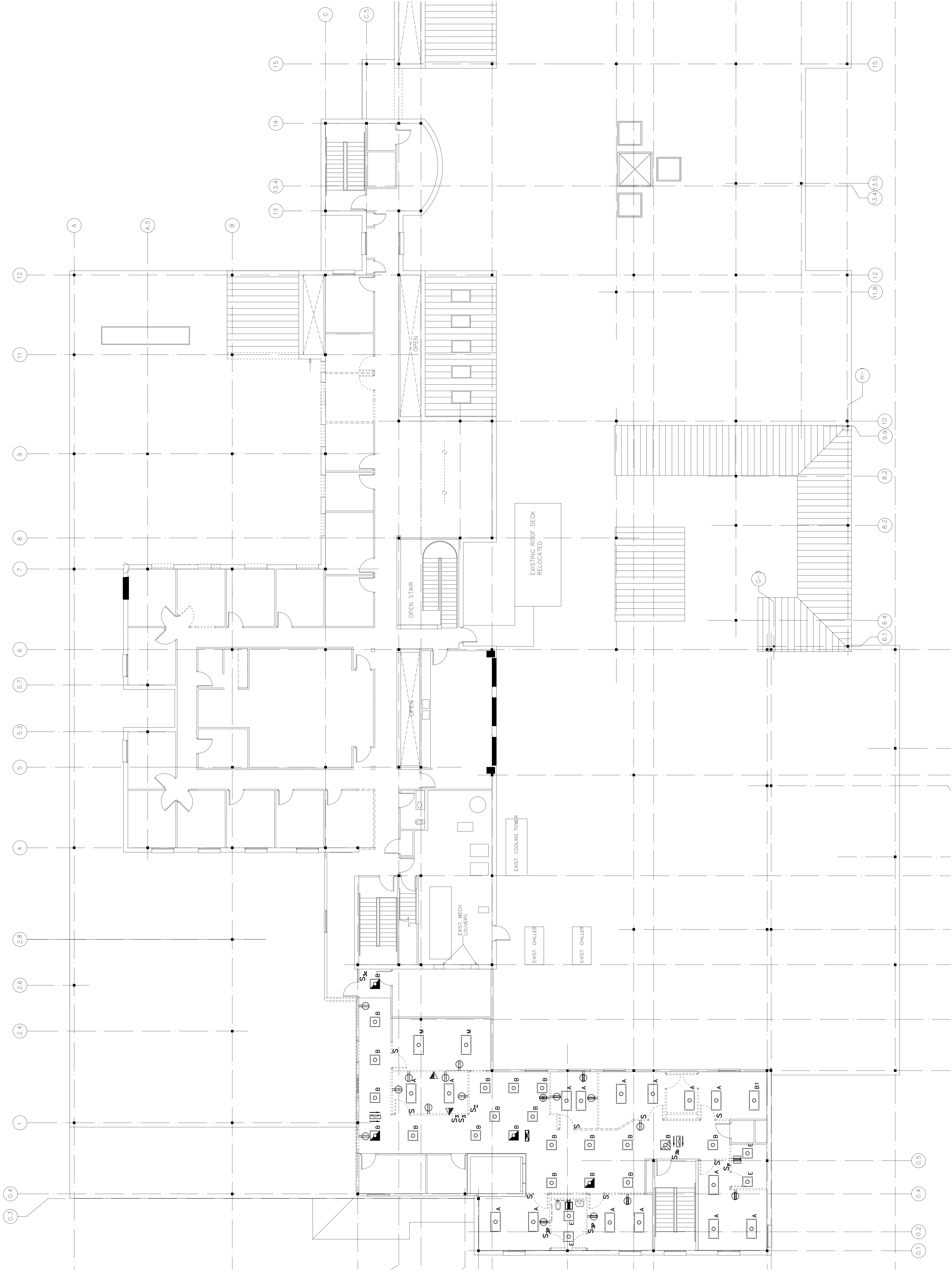


NOTE:

1. SEE SHEET E-001 FOR LEGEND AND GENERAL NOTES.
2. RE-USE EXISTING LIGHT FIXTURES REMOVED FROM PHASE 1 CONSTRUCTION AREA.



REV	ISSUED FOR CONSTRUCTION	DESCRIPTION	DATE
0	ISSUED FOR CONSTRUCTION		2-25-05

ISSUED FOR CONSTRUCTION
2-25-05

CURRENT ISSUE STATUS:



ARCHITECTURE ENGINEERING PLANNING
 SMART
 144 Fore Street/P.O. Box 618
 Portland, Maine 04104
 Tel. (207) 772-3946
 Fax. (207) 772-1070

ORTHOPAEDIC ASSOCIATES, PA
BUILDING EXPANSION
 33 SEWALL ST., PORTLAND, MAINE

PROJECT: **SECOND FLOOR DEMO PLAN**

SHEET TITLE:	1/8" = 1'-0"	DATE:	2-25-05
PROJECT MANAGER:	DJT	GRAPHIC SCALE:	0' 1"
JOB CAP/DRAWN:	LAM		
A/E OF RECORD:	DJT	SHEET NO.:	ED102
SMART CAD FILE:	ED102-04184	PROJECT NO.:	04184