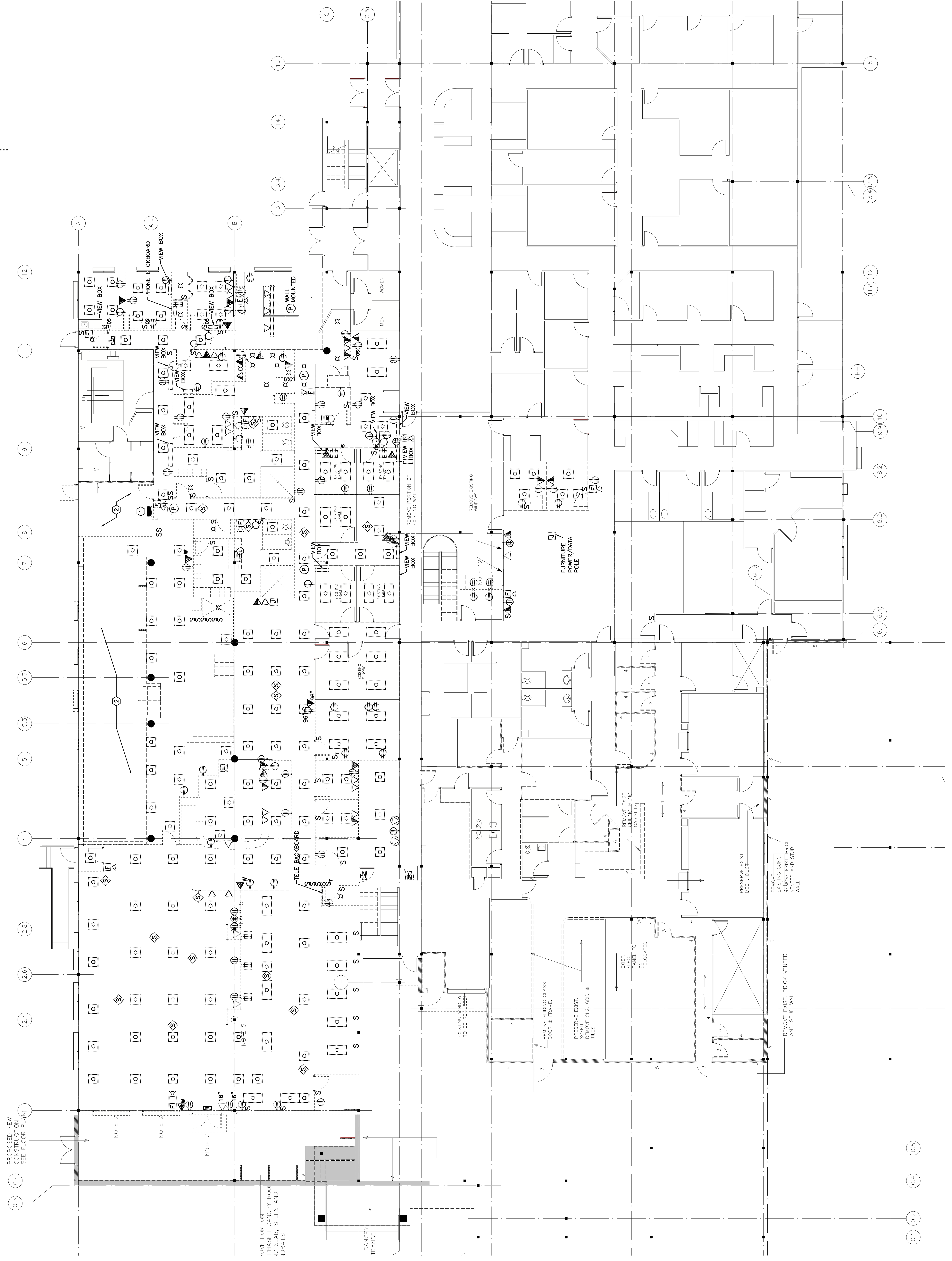


**NOTE:**

- SEE SHEET E-001 FOR LEGEND AND GENERAL NOTES.

**KEYED NOTES:**

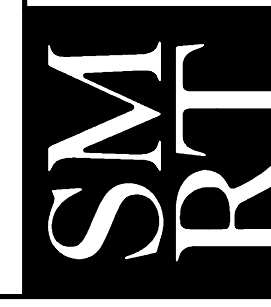
- REMOVE EXISTING POOL EQUIPMENT PANELBOARD AND EQUIPMENT IN POOL AREA. SEE SHEET EPT101 FOR LOCATION OF PANELBOARD PP7.
- REMOVE ALL CONDUIT, WIRING, LIGHTS, AND OTHER EQUIPMENT IN POOL AREA AND POOL EQUIPMENTS ROOM.



REV	DESCRIPTION	DATE
0	ISSUED FOR CONSTRUCTION	2-25-05

**ISSUED FOR CONSTRUCTION**  
**2-25-05**

CURRENT ISSUE STATUS:



144 Fore Street/P.O. Box 618  
 Portland, Maine 04104  
 Tel. (207) 772-3946  
 Fax. (207) 772-1070

**ORTHOPAEDIC ASSOCIATES, PA**  
**BUILDING EXPANSION**  
 33 SEWALL ST., PORTLAND, MAINE

**FIRST FLOOR**  
**DEMO PLAN**

SHEET TITLE:	1/8" = 1'-0"	DATE:	2-25-05
PROJECT MANAGER:	DJT	GRAPHIC SCALE:	0'
JOB CAP/DRAWN:	LAM		
A/E OF RECORD:	DJT	SHEET NO.	ED101
SMART CAD FILE:	ED101-04184		
PROJECT NO.	04184		