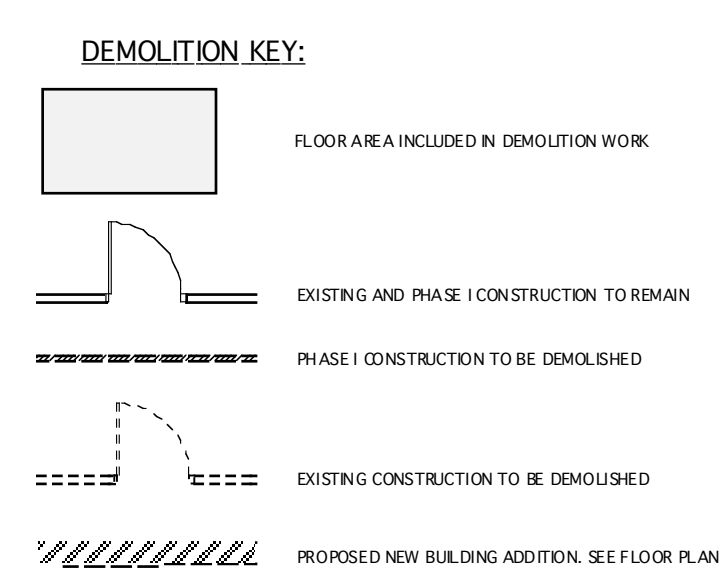
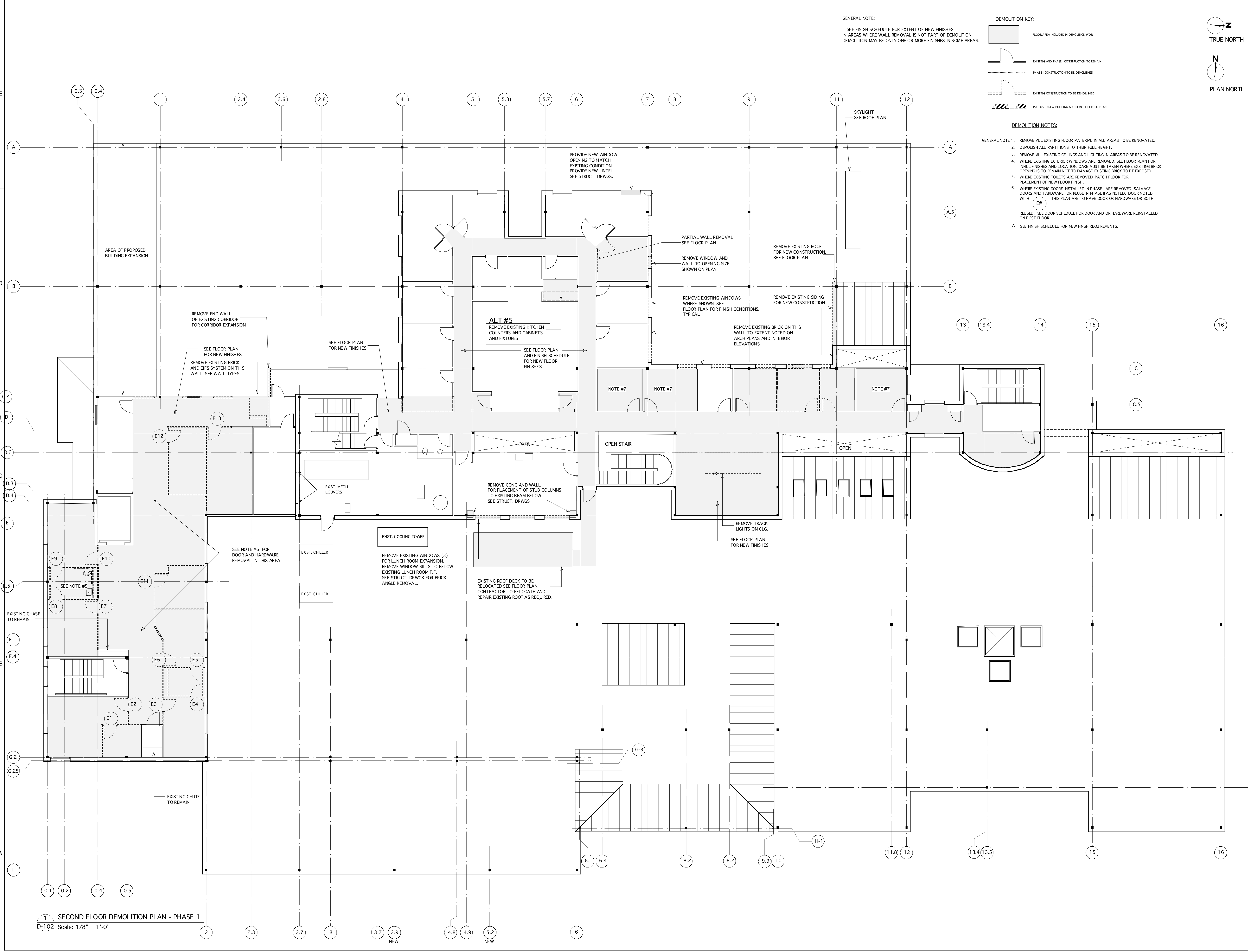


GENERAL NOTE:
1 SEE FINISH SCHEDULE FOR EXTENT OF NEW FINISHES
IN AREAS WHERE WALL REMOVAL IS NOT PART OF DEMOLITION.
DEMOLITION MAY BE ONLY ONE OR MORE FINISHES IN SOME AREAS.



DEMOLITION NOTES:

GENERAL NOTE 1. REMOVE ALL EXISTING FLOOR MATERIAL IN ALL AREAS TO BE RENOVATED.
2. DEMOLISH ALL PARTITIONS TO THEIR FULL HEIGHT.
3. REMOVE ALL EXISTING CEILING AND LIGHTING IN AREAS TO BE RENOVATED.
4. WHERE EXISTING EXTERIOR WINDOWS ARE REMOVED, SEE FLOOR PLAN FOR
MILL FINISHES AND LOCATION. CARE MUST BE TAKEN WHERE EXISTING BRICK
OPENING IS TO REMAIN NOT TO DAMAGE EXISTING BRICK TO BE EXPOSED.
5. WHERE EXISTING TOILETS ARE REMOVED, PATCH FLOOR FOR
PLACEMENT OF NEW FLOOR FINISH.
6. WHERE EXISTING DOORS INSTALLED IN PHASE I ARE REMOVED, SALVAGE
DOORS AND HARDWARE FOR REUSE IN PHASE II AS NOTED. DOOR NOTED
WITH
E#
REUSED. SEE DOOR SCHEDULE FOR DOOR AND OR HARDWARE REINSTALLED
ON FIRST FLOOR.
7. SEE FINISH SCHEDULE FOR NEW FINISH REQUIREMENTS.



1 SECOND FLOOR DEMOLITION PLAN - PHASE 1
D-102 Scale: 1/8" = 1'-0"