

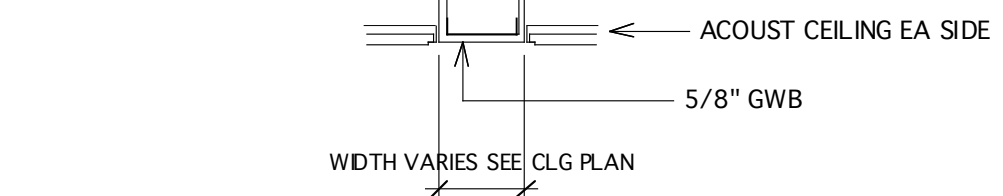
E

D

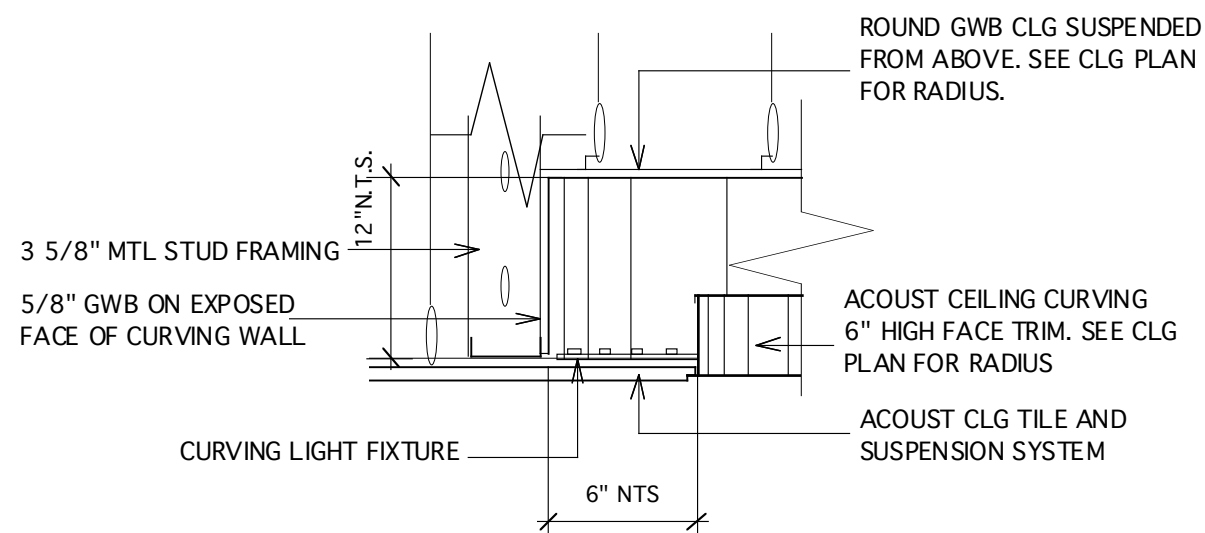
C

B

A



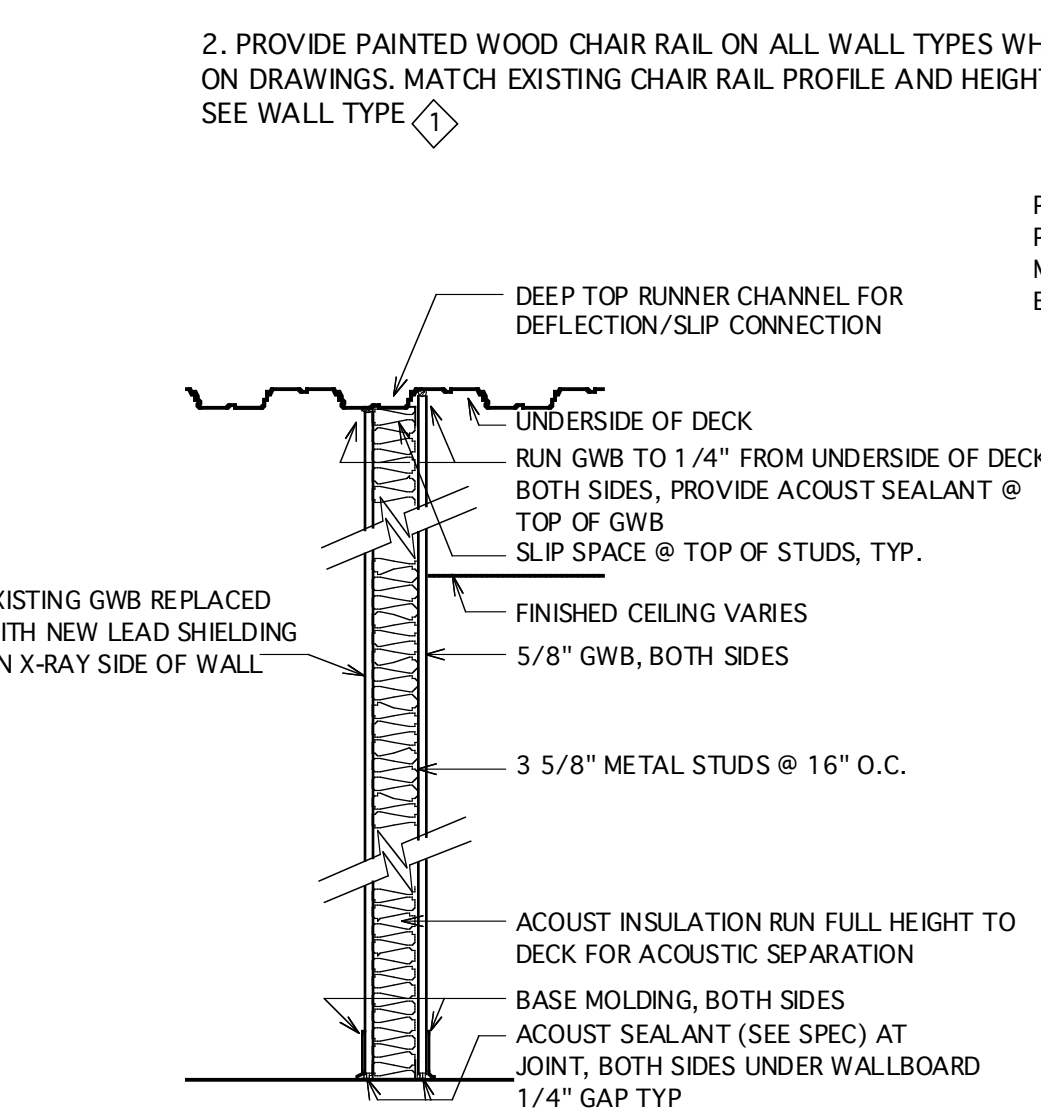
**1 CEILING SOFFIT DETAIL**  
A-603 N.T.S.



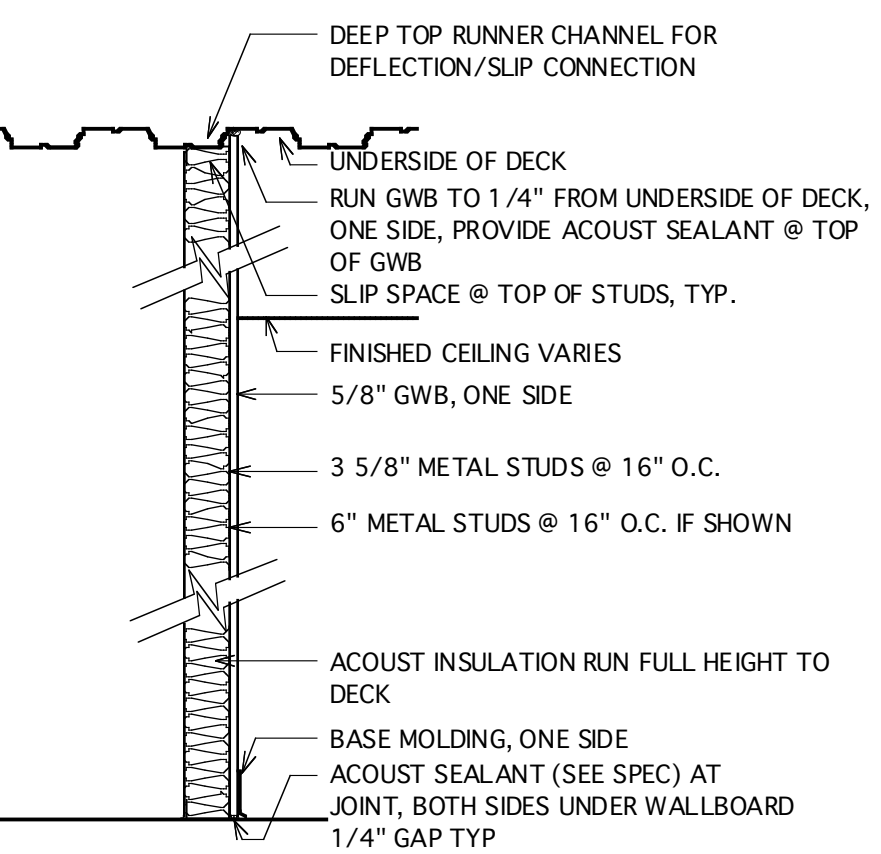
**2 WAITING CEILING SOFFIT DETAIL**  
A-603 N.T.S.

### WALL TYPES

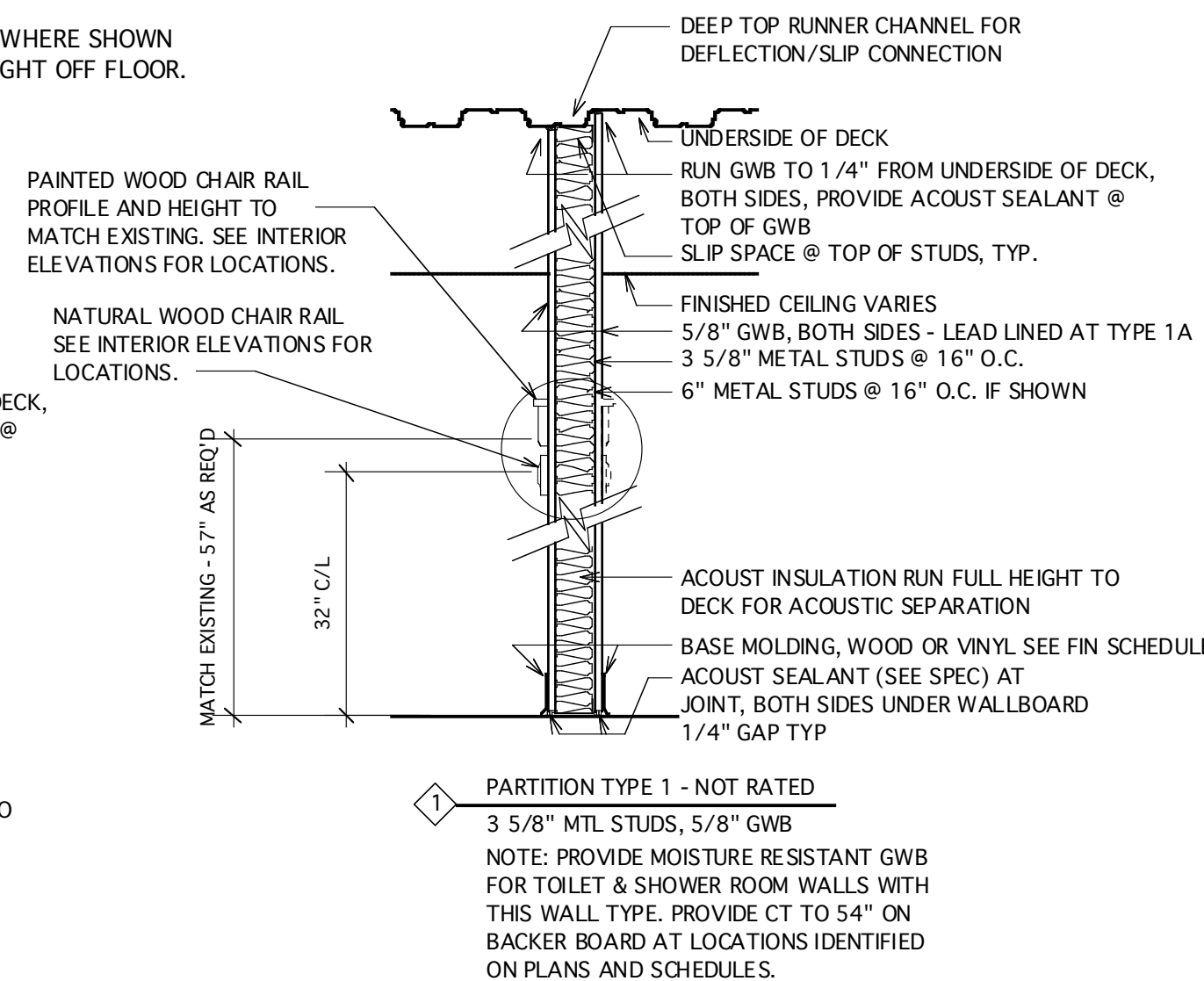
- NOTES:  
1. WALL TYPES MAY HAVE VINYL BASE OR WOOD BASE DEPENDING UPON LOCATION IN FLOOR PLAN. VINYL BASE SHOWN IN WALL TYPE DETAIL. SEE FINISH SCHEDULE FOR LOCATION OF WOOD BASE.  
2. PROVIDE PAINTED WOOD CHAIR RAIL ON ALL WALL TYPES WHERE SHOWN ON DRAWINGS. MATCH EXISTING CHAIR RAIL PROFILE AND HEIGHT OFF FLOOR. SEE WALL TYPE.



**1B PARTITION TYPE 1B - LEAD LINED - APPLY TO EXISTING WALL**  
3 5/8" MTL STUDS, 5/8" GWB  
NOTE: REMOVE EXISTING GWB AND PROVIDE LEAD SHIELDING PER OWNER'S REQUIREMENTS



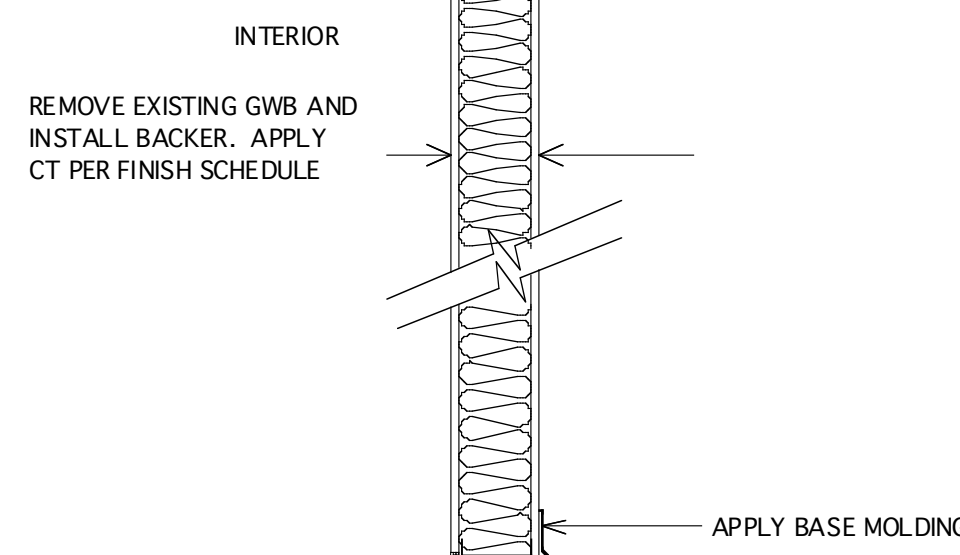
**1C PARTITION TYPE 1C - NOT RATED**  
3 5/8" MTL STUDS, 5/8" GWB  
**1D PARTITION TYPE 1D - NOT RATED**  
6" MTL STUDS, 5/8" GWB



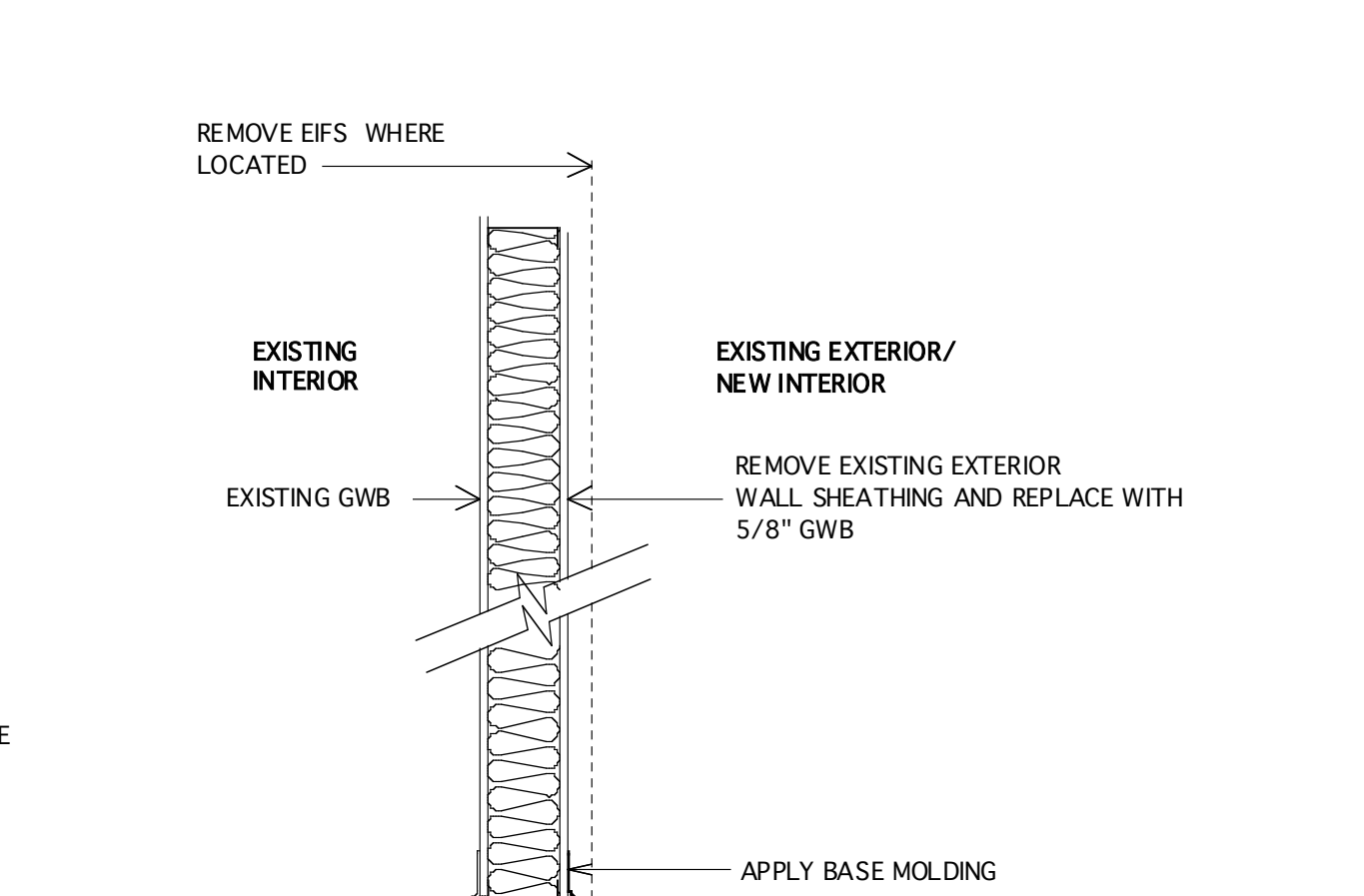
**1 PARTITION TYPE 1A - NOT RATED**  
3 5/8" MTL STUDS, 5/8" GWB  
NOTE: PROVIDE MOISTURE RESISTANT GWB FOR TOILET & SHOWER ROOM WALLS WITH THIS WALL TYPE. PROVIDE CT TO 54" ON BACKER BOARD AT LOCATIONS IDENTIFIED ON PLANS AND SCHEDULES.

**1A PARTITION TYPE 1A - LEAD LINED**  
3 5/8" MTL STUDS, 5/8" GWB  
NOTE: PROVIDE LEAD SHIELDING FOR X-RAY INSTALLATION PER OWNER'S SHIELDING CONSULTANT REPORT

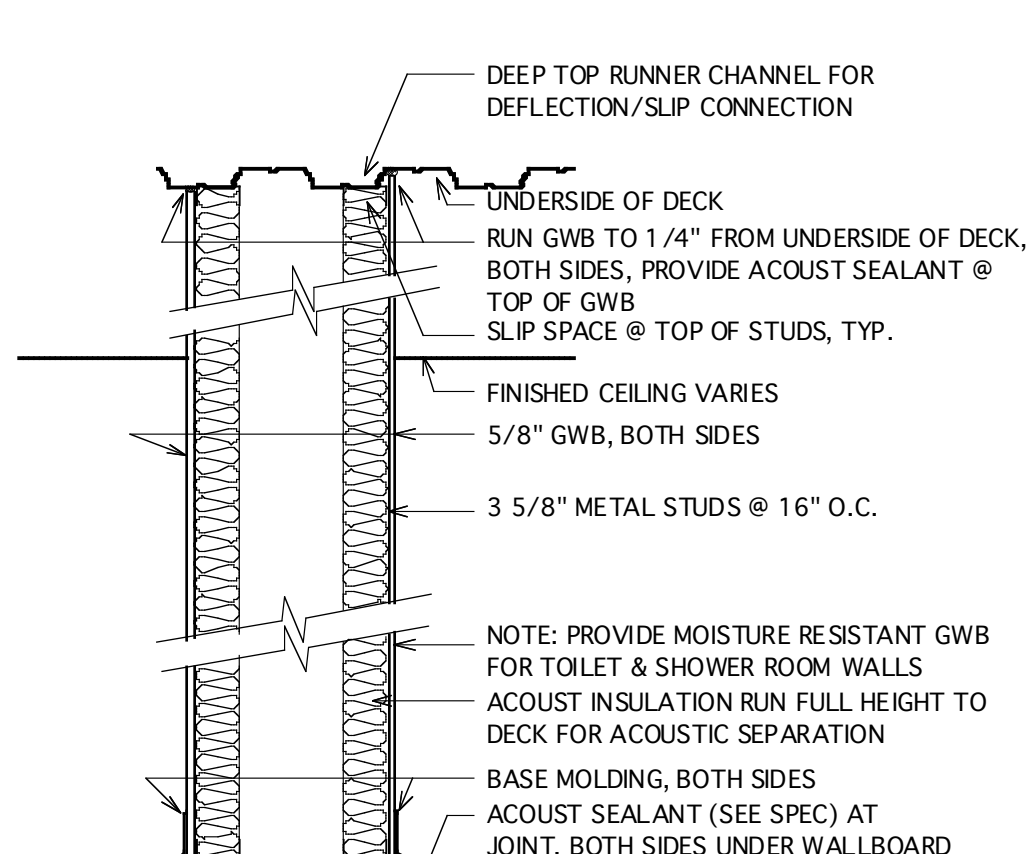
**1R PARTITION TYPE 1R - 1 HR RATED - UL DESIGN NO. U465**  
3 5/8" MTL STUDS, 5/8" GWB



**2A PARTITION TYPE 2A - EXISTING EXTERIOR WALL ON INTERIOR**  
EXISTING WALL, 6 MTL STUDS, 5/8" GWB INTERIOR, 5/8" SEATHING EXTERIOR  
REMOVE EXISTING INTERIOR GWB FOR TILE BACKER INSTALLATION AT CT INSTALLATION



**2 PARTITION TYPE 2 - EXISTING EXTERIOR WALL ON INTERIOR**  
EXISTING WALL, 6 MTL STUDS, 5/8" GWB INTERIOR, 5/8" SEATHING EXTERIOR



**8 PARTITION TYPE 8 - NOT RATED**  
3 5/8" MTL STUDS, 5/8" GWB

### GENERAL NOTE:

GENERAL CONTRACTOR AS WELL AS FLOOR AND CEILING CONTRACTORS ARE RESPONSIBLE FOR DETERMINING THE EXTENT OF NEW FLOOR AND CEILING WORK IN AREAS CONSTRUCTED UNDER PHASE I OF THIS PROJECT IN ORDER TO ACCOMMODATE THE REVISED FLOOR PLAN FOR PHASE I AREAS.

### NOTES:

- WHERE EXISTING FLOOR CARPET TILE EXISTS, SALVAGE ALL ACCEPTABLE FULL SIZE TILE FOR REUSE IN NEW FLOOR PLAN LAYOUT WHERE POSSIBLE. DO NOT REINSTALL PARTIAL TILES THAT HAVE BEEN CUT TO EXISTING WALL LAYOUT.
- WHERE EXISTING CEILINGS EXIST, REUSE ALL ACCEPTABLE TILES AND GRIDS IN NEW CONSTRUCTION, WHERE CEILINGS ARE THE SAME HEIGHT. MODIFY CEILING LAYOUT TO ACCOMMODATE NEW FLOOR PLAN WHERE POSSIBLE.
- WHERE CEILING GRID HAS BEEN SHIFTED IN NEW FLOOR PLAN LAYOUT INSTALL NEW CEILING GRID SYSTEM, BUT REUSE AS MANY SUITABLE CEILING TILE AS POSSIBLE.
- FOR PURPOSES OF COMMUNICATING ROOM FINISHES, USE "PLAN NORTH" TO NAVIGATE WALL LOCATIONS.

### ROOM FINISH LEGEND

#### Base

- CT Ceramic tile
- PT WD Wood, painted, match existing finish and height
- CL WD Wood, clear finish, match existing height
- VB Vinyl Base - 4"

#### Ceiling

- No ceiling finish
- C1 2x2 absorptive acoustical tile
- C1.3 2x2 Moisture resistant acoustical tile
- GWB Painted GWB

#### Floor

- CPT1 Carpet 1
- CPT2 Carpet 2
- CT Ceramic tile
- M Floor mat
- VCT Vinyl composition tile
- AF Athletic Flooring

#### Wall

- FRP Fiberglass panel
- PT Painted surface
- GL Aluminum framed glazing clear and translucent
- EXB Exposed (natural) brick

ROOM	FINISH	SCHEDULE	BASE	WALLS	CEILING	GENERAL				
ID	Name		North	East	South	West	Material	Height	Remarks	
100	WAITING	CPT-1	CL WD	PT	PT	PT	GWB	VARIES	REPAIR SLOPED GWB CLG WHERE TRACK LIGHTING REMOVED	
101	TOILET	EXIST	EXIST	PT	PT	PT	EXIST	EXIST		
102	TOILET	EXIST	EXIST	PT	PT	PT	EXIST	EXIST		
104	PA	CPT-1	VB	PT	PT	PT	C1	8'0"		
105	CORR	CPT-1	VB	PT	PT	PT	C1	8'0"		
106	CHECK OUT	CPT-1	VB	PT	PT	PT	C1	8'0"		
107	CORR	CPT-1	CL WD	PT	PT	PT	GWB	8'0"		
107.1	CORR	CPT-1	VB	PT	PT	PT	C1	8'0"		
107.2	CORR	CPT-1	VB	PT	PT	PT	C1	8'0"		
108	EXAM	CPT-1	VB	PT	PT	PT	C1	8'0"		
108.1	DR	CPT-1	VB	PT	PT	PT	C1	8'0"		
109	EXAM	CPT-1	VB	PT	PT	PT	C1	8'0"		
110	EXIST X-RAY								EXISTING	
111	TECH	CPT-1	VB	PT	PT	PT	C1	8'0"	PARTIAL EXISTING INFILL CLG/CPT TO MATCH EXISTING	
112	EXIST DARK								EXISTING, PAINT NEW CONSTRUCTION	
113	X-RAY	CPT-1	VB	PT	PT	PT	C1	Remarks	CLG HGT TO MATCH X-RAY 110	
114	CORR	CPT-1	VB	PT	PT	PT	C1	8'0"		
114.1	CORR	CPT-1	VB	PT	PT	PT	C1	8'0"		
115	NURSE	CPT-1	VB	PT	PT	PT	C1	8'0"		
115.1	STO	CPT-1	VB	PT	PT	PT	C1	8'0"		
116	EXAM	CPT-1	VB	PT	PT	PT	C1	8'0"		
117	STO	VCT	VB	PT	PT	PT	C1	8'0"		
118	JAN	VCT	VB	FRP	FRP	FRP	C1	8'0"	1 HR CONSTRUCTION	
119	EXAM	CPT-1	VB	PT	PT	PT	C1	8'0"		
120	WTOILET	CT/Remarks	CT	CT/PT	CT/PT	CT/PT	C1	8'0"	WALL CT TO 54"/STONE THRESHOLD	
121	MTOILET	CT/Remarks	CT	CT/PT	CT/PT	CT/PT	C1	8'0"	WALL CT TO 54"/STONE THRESHOLD	
122	STO	VCT	VB	PT	PT	PT	C1	8'0"		
124	DR	CPT-1	VB	PT	PT	PT	C1	8'0"		
125	NURSE	CPT-1	VB	PT	PT	PT	C1	8'0"		
126	EXAM	CPT-1	VB	PT	PT	PT	C1	8'0"		
127	EXAM	CPT-1	VB	PT	PT	PT	C1	8'0"		
128	EXAM	CPT-1	VB	PT	PT	PT	C1	8'0"		
129	EXAM	CPT-1	VB	PT	PT	PT	C1	8'0"		
130	FLUORO								EXISTING, PAINT NEW CONSTRUCTION	
131	EXAM	CPT-1	VB	PT	PT	PT	C1	8'0"		
132	CORR	CPT-1	VB	PT	PT	PT	C1	8'0"		
133	DR	CPT-1	VB	PT	PT	PT	C1	8'0"		
134	WAITING	CPT-1	VB	PT	PT	PT	C1/GWB	VARIES	ALUM FRAME/CAST RESIN PANELS	
135	VEST	VCT	VB	PT	PT	PT	C1	8'0"		
135.1	STO	VCT	VB	PT	PT	PT	C1	8'0"		
135.2	CAST RM	VCT	VB	PT	PT	PT	C1	8'0"		
136	NURSE	CPT-1	VB	PT	PT	PT	C1	8'0"		
137	DR	CPT-1	VB	PT	PT	PT	C1	8'0"		
138	CORR	CPT-1	VB	PT	PT	PT	C1	8'0"		
139	EXAM	CPT-1	VB	PT	PT	PT	C1	8'0"		
140	EXAM	CPT-1	VB	PT	PT	PT	C1	8'0"		
141	EXAM	CPT-1	VB	PT	PT	PT	C1	8'0"		
142	STO	CPT-1	VB	PT	PT	PT	C1	8'0"		
143	EXAM	CPT-1	VB	PT	PT	PT	C1	8'0"		
144	EXAM	CPT-1	VB	PT	PT	PT	C1	8'0"		
145	EXAM	CPT-1	VB	PT	PT	PT	C1	8'0"		
146	DR	CPT-1	VB	PT	PT	PT	C1	8'0"		
147	EXAM	CPT-1	VB	PT	PT	PT	C1	8'0"		
148	EXAM	CPT-1	VB	PT	PT	PT	C1	8'0"		
149	CORR	CPT-1	VB	PT	PT	PT	C1	8'0"		
150	DR	CPT-1	VB	PT	PT	PT	C1	8'0"		
151	STO	VCT	VB	PT	PT	PT	C1	8'0"	1 HR CONSTRUCTION	
152	EXAM	CPT-1	VB	PT	PT	PT	C1	8'0"		
153	EXAM	CPT-1	VB	PT	PT	PT	C1	8'0"		
154	WTOILET	CT/Remarks	CT	CT/PT	CT/PT	CT/PT	C1	8'0"	STONE THRESHOLD/WALL CT TO 54"	
155	MSHOWER	CT/Remarks	CT	CT/PT	CT/PT	CT/PT	C1.3/GWB	8'0"	STONE THRESHOLD/WALL CT TO 54"/MR GWB OVER SHOWER & BENCH	
156	TOILET	CT/Remarks	CT	CT/PT	CT/PT	CT/PT	C1	8'0"	STONE THRESHOLD/WALL CT TO 54"	
157	MSHOWER	CT/Remarks	CT	CT/PT	CT/PT	CT/PT	C1.3/GWB	8'0"	STONE THRESHOLD/WALL CT TO 54"/MR GWB OVER SHOWER & SINK	
158	STO	VCT	VB	PT	PT	PT	C1	8'0"	1 HR RATED CONSTRUCTION	
159	VEST	CL WD	PT	PT	PT	PT	C1	8'0"	WALK OFF MAT ENTIRE VESTIBULE	
160	CORRIDOR	CPT-1	CL WD	PT	PT	PT	C1/GWB	8'0"	GWB CLG SOFFITS AT LOCATIONS SHOWN	
161	PT	CPT-1	VB	PT	PT	PT	C1/GWB	VARIES	GWB SOFFIT/CLG SHOWN	
162	PT REC	CPT-1	VB	PT	PT	PT	GWB & C1	Remarks	GWB @10' / C1 @ 8'	
163	WAITING	CPT-1	CL WD	PT	PT	PT	GL	GWB	8'0"	
164	PT STAFF	CPT-1	VB	PT	PT	PT	C1	8'0"		
165	OT	CPT-1	VB	PT	PT	PT	C1	8'0"		
166	OFFICE	CPT-1	VB	PT	PT	PT	C1	8'0"		
167	CHANGE	CPT-1	VB	PT	PT	PT	C1	8'0"		
168	AMB AREA	AF	VB				MIRROR	GWB	VARIES	FULL WIDTH & HEIGHT HI Impact MIRROR/RADIAL FLOOR PATTERN @ CIR
169	CORR	CPT-2/VCT	VB	PT	PT	PT	C1/GWB	8'0"	GWB CLG OVER EQUIPMENT	
180	EXAM	CPT-1	VB	PT	PT	PT	C1	8'0"		
181	OFFICE	CPT-1	VB	PT	PT	PT	C1	8'0"		
182	DR	CPT-1	VB	PT	PT	PT	C1	8'0"		
183	CORR	CPT-1	VB	PT	PT	PT	C1	8'0"		
184	CORR	CPT-1	VB	PT	PT	PT	C1	8'0"		
185	EXAM	CPT-1	VB	PT	PT	PT	C1	8'0"		
186	EXAM	CPT-1	VB	PT	PT	PT	C1	8'0"		
187	CORR	CPT-1	VB	PT	PT	PT	C1	8'0"	Remarks	
187.1	OFFICE	EXIST	VB	PT	PT	PT	C1	8'0"	Remarks	
187.2	CORR	CPT-1	VB	PT	PT	PT	C1	8'0"	Remarks	
188	CALL CTR	CPT-1	VB	PT	PT	PT	C1	8'0"	Remarks	
189	COPY	CPT-1	VB	PT	PT	PT	C1	8'0"	Remarks	
190	COMPUTER	CPT-1	VB	PT	PT	PT	C1	8'0"	Remarks	
191	RECORDS	CPT-1	VB	PT	PT	PT	C1	8'0"	Remarks	
192	RECORDS STO	CPT-1	VB	PT	PT	PT	C1	8'0"	Remarks	
193	PHONE									
194	OFFICE	Remarks	Remarks	PT	PT	PT	PT	8'0"	Repair VCT as required/Patch walls/repair clg	
200	OFFICE	CPT-1	VB	PT	PT	PT	C1	8'0"	EXISTING	
201	OFFICE	CPT-1	PT WD	PT	PT	PT	C1	8'0"		
202	CORR	CPT-1	PT WD	PT	PT	PT	C1	8'0"		
203	OFFICE	CPT-1	PT WD	PT	PT	PT	C1	8'0"		
204	STO								REPAIRS TO EXISTING	
205	CORR	CPT-1	PT WD	PT	PT	PT	C1			