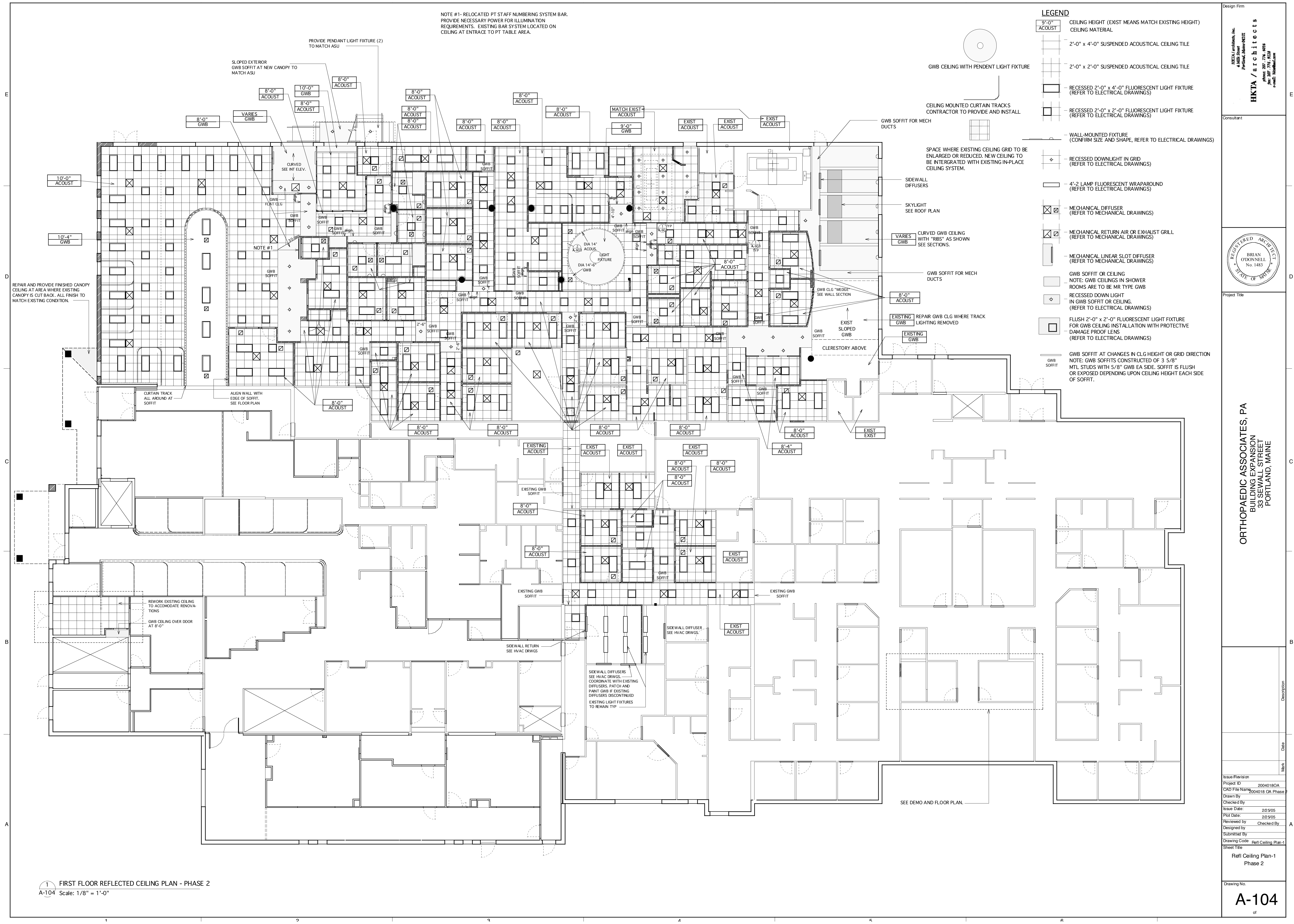


NOTE #1- RELOCATED PT STAFF NUMBERING SYSTEM BAR.  
 PROVIDE NECESSARY POWER FOR ILLUMINATION  
 REQUIREMENTS. EXISTING BAR SYSTEM LOCATED ON  
 CEILING AT ENTRANCE TO PT TABLE AREA.

**LEGEND**

- 9'-0" ACOUST CEILING HEIGHT (EXIST MEANS MATCH EXISTING HEIGHT)
- CEILING MATERIAL
- 2'-0" x 4'-0" SUSPENDED ACOUSTICAL CEILING TILE
- 2'-0" x 2'-0" SUSPENDED ACOUSTICAL CEILING TILE
- RECESSED 2'-0" x 4'-0" FLUORESCENT LIGHT FIXTURE (REFER TO ELECTRICAL DRAWINGS)
- RECESSED 2'-0" x 2'-0" FLUORESCENT LIGHT FIXTURE (REFER TO ELECTRICAL DRAWINGS)
- WALL-MOUNTED FIXTURE (CONFIRM SIZE AND SHAPE, REFER TO ELECTRICAL DRAWINGS)
- RECESSED DOWNLIGHT IN GRID (REFER TO ELECTRICAL DRAWINGS)
- 4'-2 LAMP FLUORESCENT WRAPAROUND (REFER TO ELECTRICAL DRAWINGS)
- MECHANICAL DIFFUSER (REFER TO MECHANICAL DRAWINGS)
- MECHANICAL RETURN AIR OR EXHAUST GRILL (REFER TO MECHANICAL DRAWINGS)
- MECHANICAL LINEAR SLOT DIFFUSER (REFER TO MECHANICAL DRAWINGS)
- GWB SOFFIT OR CEILING  
 NOTE: GWB CEILINGS IN SHOWER ROOMS ARE TO BE MR TYPE GWB
- RECESSED DOWN LIGHT IN GWB SOFFIT OR CEILING (REFER TO ELECTRICAL DRAWINGS)
- FLUSH 2'-0" x 2'-0" FLUORESCENT LIGHT FIXTURE FOR GWB CEILING INSTALLATION WITH PROTECTIVE DAMAGE PROOF LENS (REFER TO ELECTRICAL DRAWINGS)
- GWB SOFFIT AT CHANGES IN CLG HEIGHT OR GRID DIRECTION  
 NOTE: GWB SOFFITS CONSTRUCTED OF 3 5/8" MTL STUDS WITH 5/8" GWB EA SIDE. SOFFIT IS FLUSH OR EXPOSED DEPENDING UPON CEILING HEIGHT EACH SIDE OF SOFFIT.



HIKTA / ARCHITECTS  
 4 WADSWORTH STREET  
 PORTLAND, MAINE 04101  
 PHONE: 207.774.1676  
 FAX: 207.774.1212  
 WWW: HIKTA.COM

REGISTERED ARCHITECT  
 BRIAN O'DONNELL  
 No. 1483  
 STATE OF MAINE

ORTHOPAEDIC ASSOCIATES, PA  
 BUILDING EXPANSION  
 33 SEWALL STREET  
 PORTLAND, MAINE

| Issue/Revision                           | Date | Mark | Description |
|--|------|------|-------------|
| Project ID: 20040180A                    |      |      |             |
| CAD File Name: 2004018 CA Phase 2        |      |      |             |
| Drawn By:                                |      |      |             |
| Checked By:                              |      |      |             |
| Issue Date: 2/25/05                      |      |      |             |
| Plot Date: 2/25/05                       |      |      |             |
| Reviewed By:                             |      |      |             |
| Designed By:                             |      |      |             |
| Submitted By:                            |      |      |             |
| Drawing Code: Refl Ceiling Plan-1        |      |      |             |
| Sheet Title: Refl Ceiling Plan-1 Phase 2 |      |      |             |
| Drawing No.:                             |      |      |             |

1 FIRST FLOOR REFLECTED CEILING PLAN - PHASE 2  
 A-104 Scale: 1/8" = 1'-0"