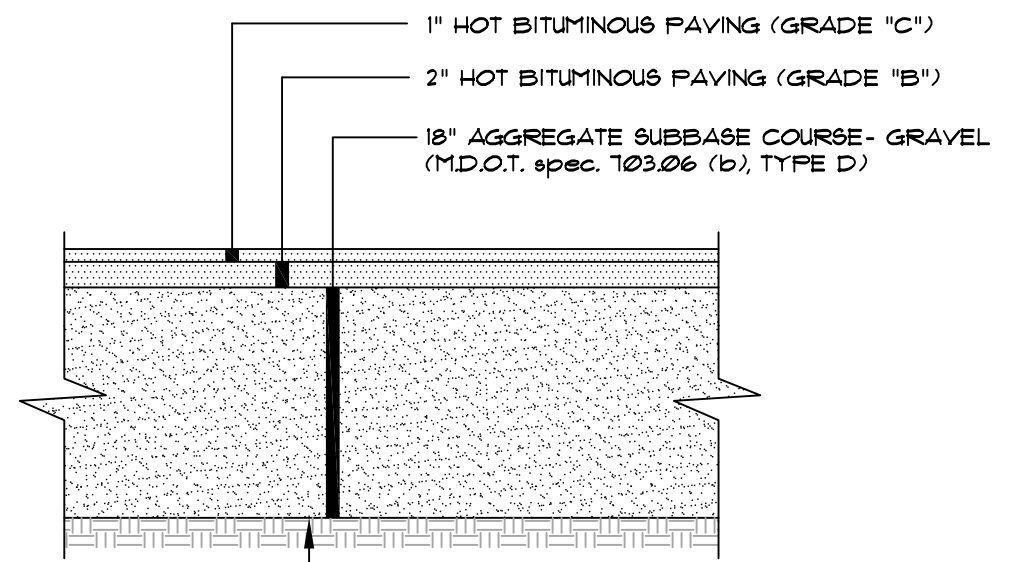


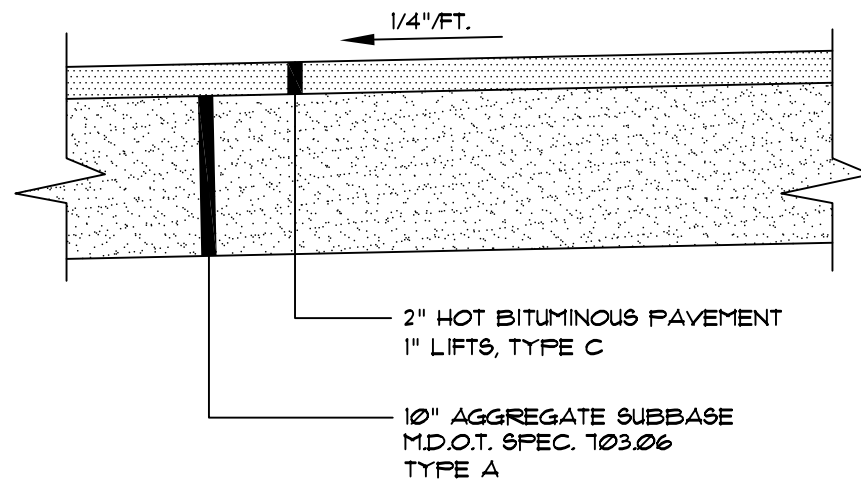
NOTES:
 1. COMPACT GRAVEL SUB-BASE COURSE TO 92% OF MAXIMUM DENSITY USING HEAVY ROLLER COMPACTION.
 2. CONTRACTOR SHALL SET GRADE STAKES MARKING SUBBASE AND FINISH GRADE ELEVATIONS FOR CONSTRUCTION REFERENCE.

1 HEAVY DUTY CONCRETE PAVEMENT
 NOT TO SCALE

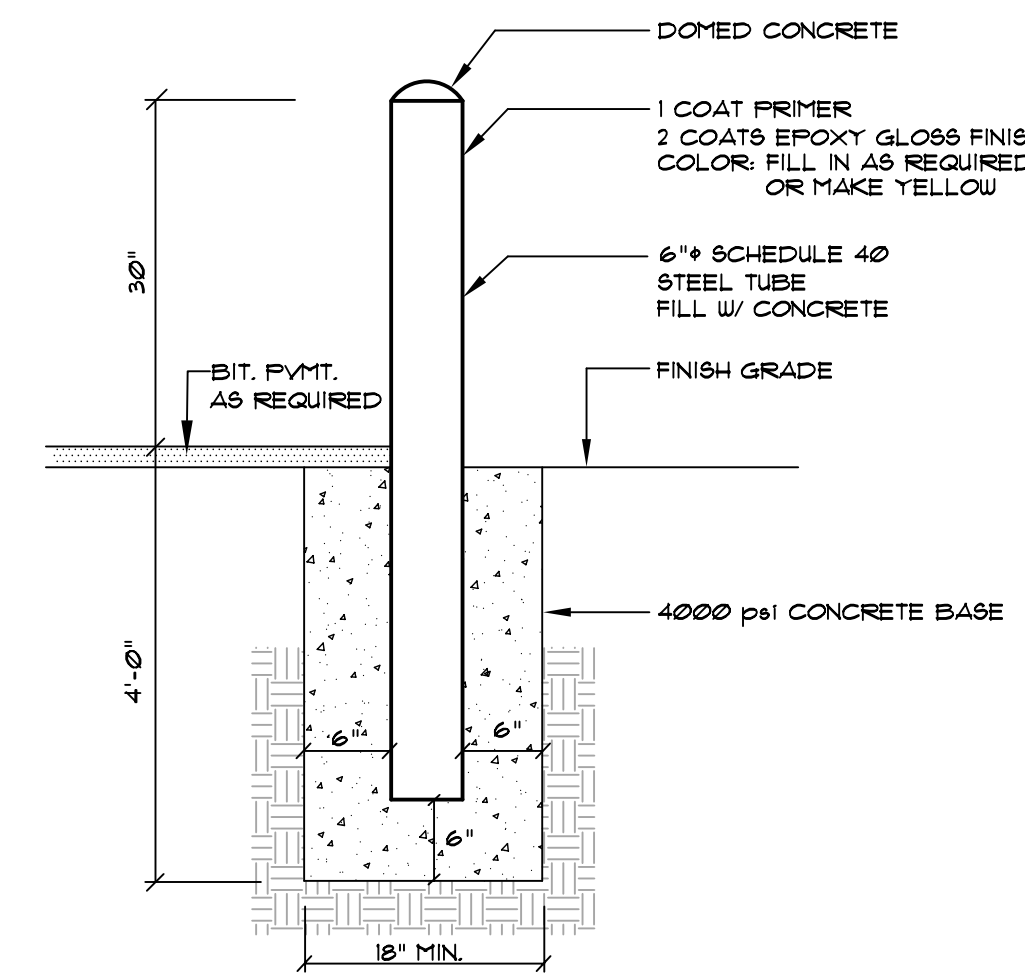


NOTES:
 1. COMPACT GRAVEL SUBBASE COURSE TO 92% OF MAXIMUM DENSITY USING HEAVY ROLLER COMPACTION.
 2. CONTRACTOR SHALL SET GRADE STAKES MARKING SUBBASE AND FINISH GRADE ELEVATIONS FOR CONSTRUCTION REFERENCE.

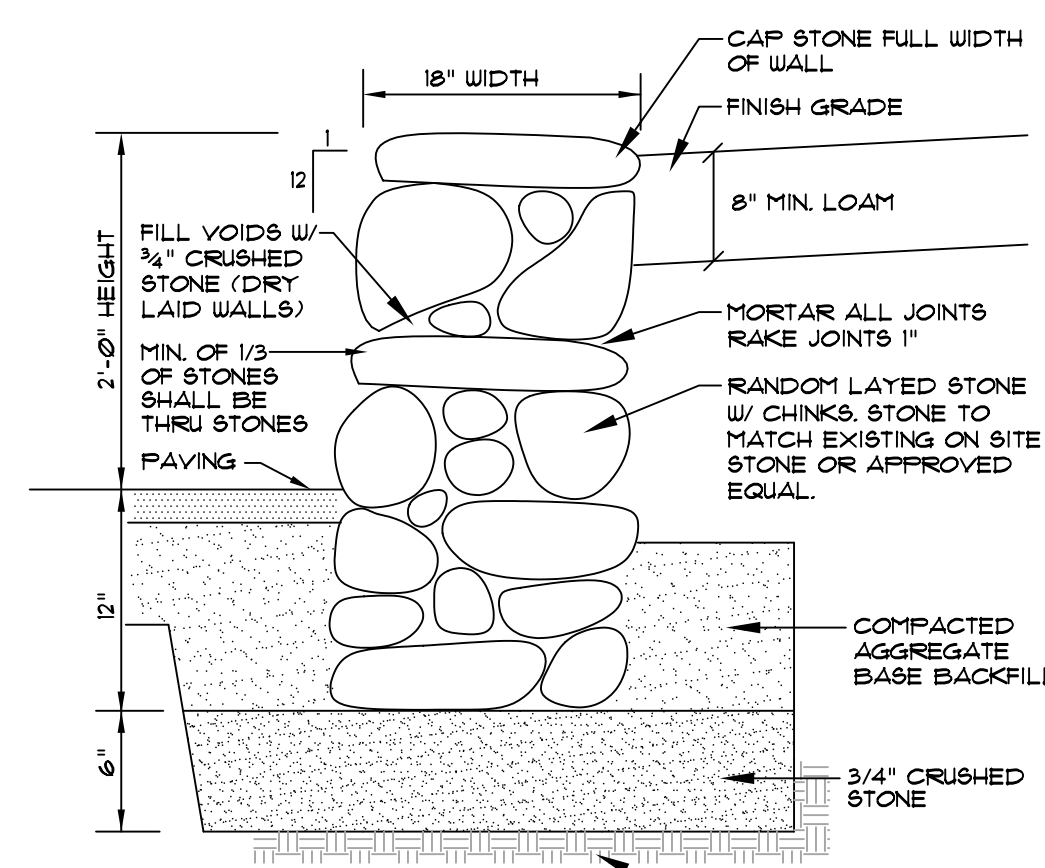
2 TYP. PAVED PARKING LOT SECTION
 NOT TO SCALE



3 BITUMINOUS SIDEWALK
 NOT TO SCALE

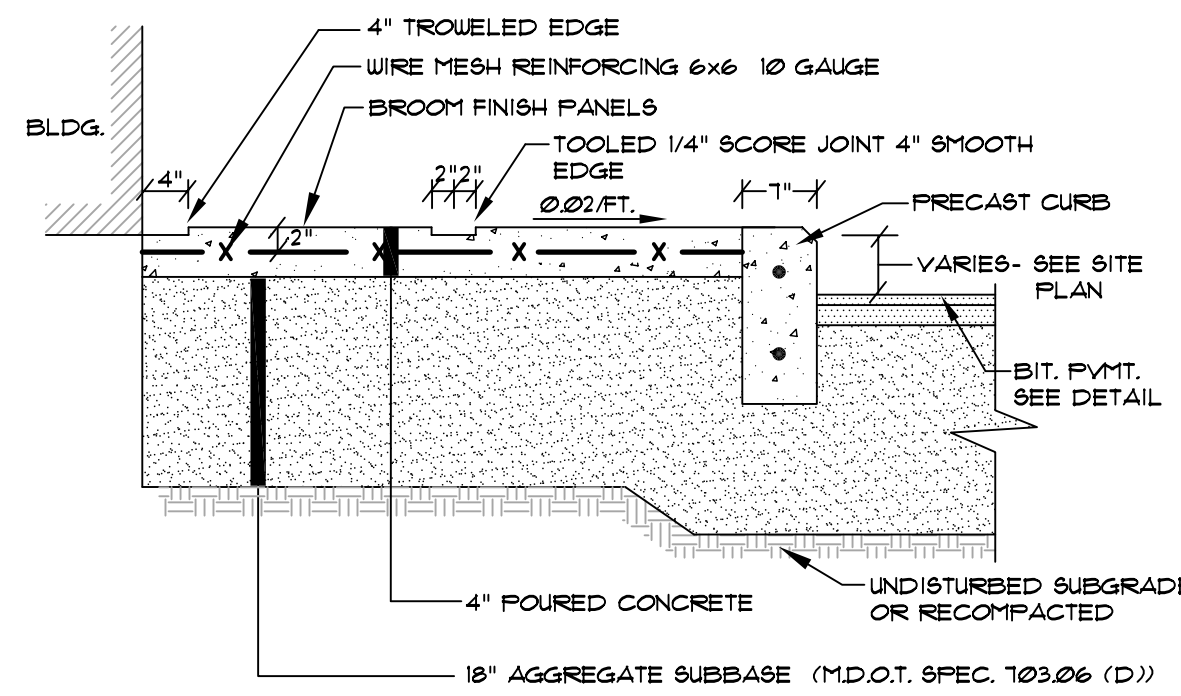


4 METAL BOLLARD
 NOT TO SCALE



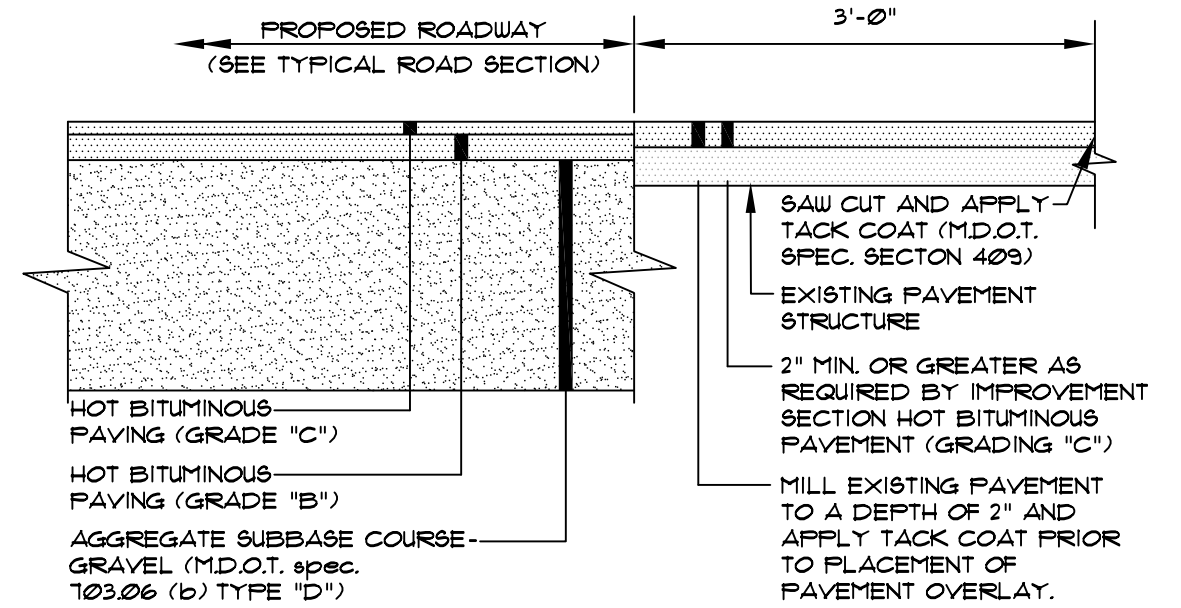
NOTES:
 1. CONCRETE RUBBLE MAY BE USED IN WALL WHERE UPON COMPLETION IT WILL NOT SHOW.
 2. MORTAR SHALL BE CHARCOAL COLOR.

5 STONE WALL
 NOT TO SCALE

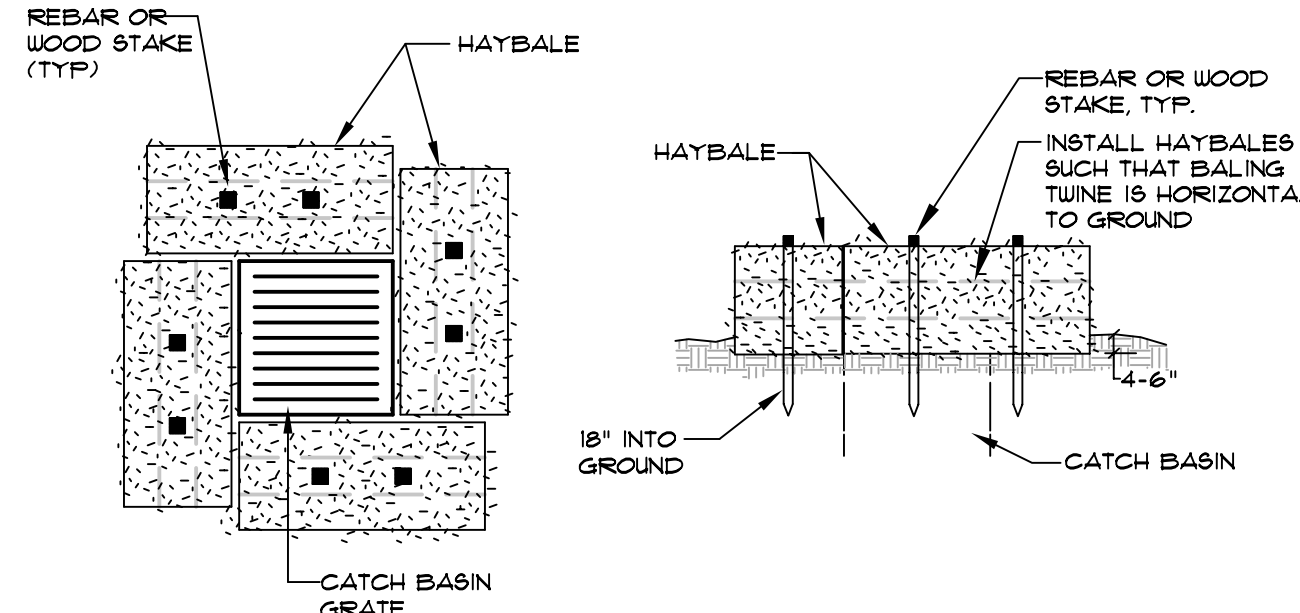


NOTE:
 INSTALL 5'-0" SQUARE AREA BY 4" DEEP OF FROST-FREE MATERIAL BELOW ALL HANDICAP RAMPS AND ENTRY POINTS AT BUILDING.

6 CONCRETE SIDEWALK
 NOT TO SCALE

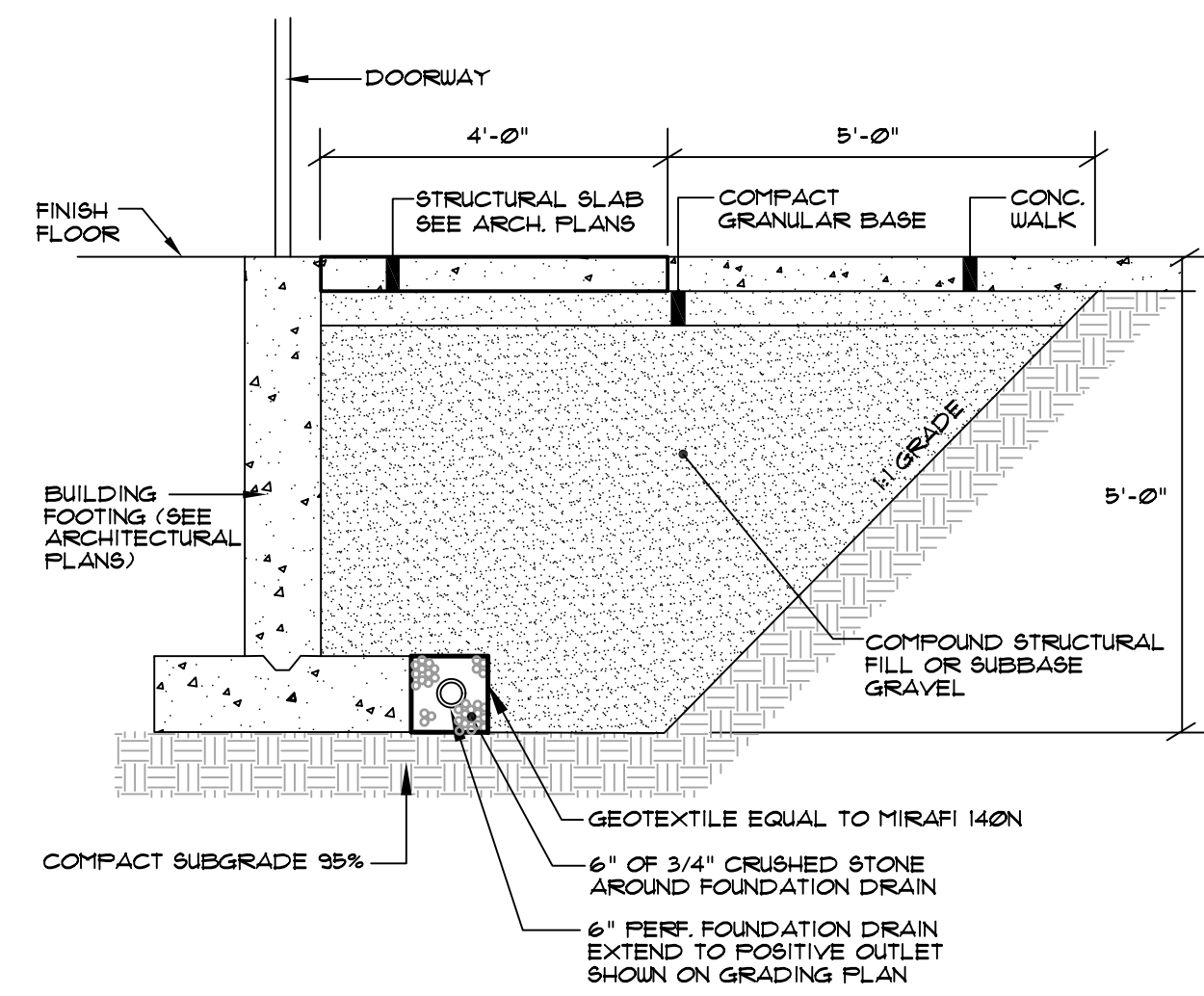


7 TYPICAL PAVEMENT JOINT
 NOT TO SCALE

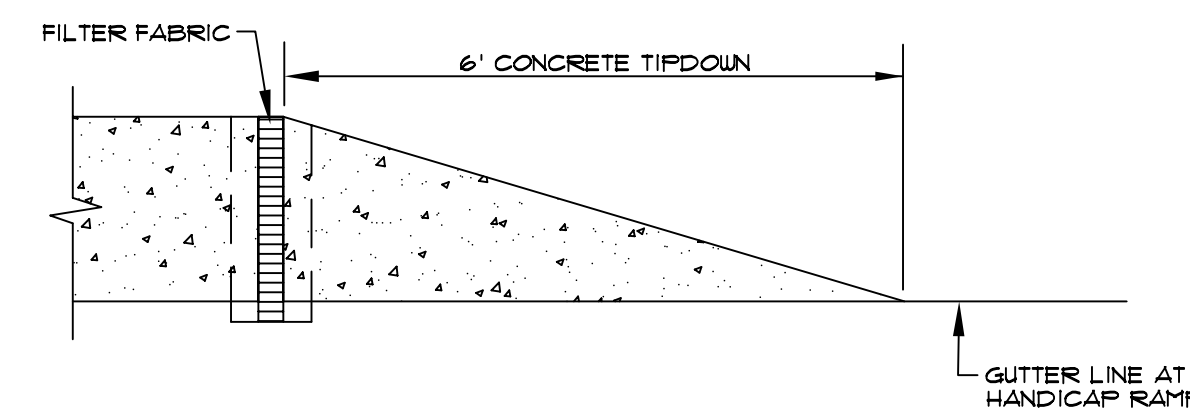


NOTE: INSTALL BARRIER AT EACH CATCH BASIN

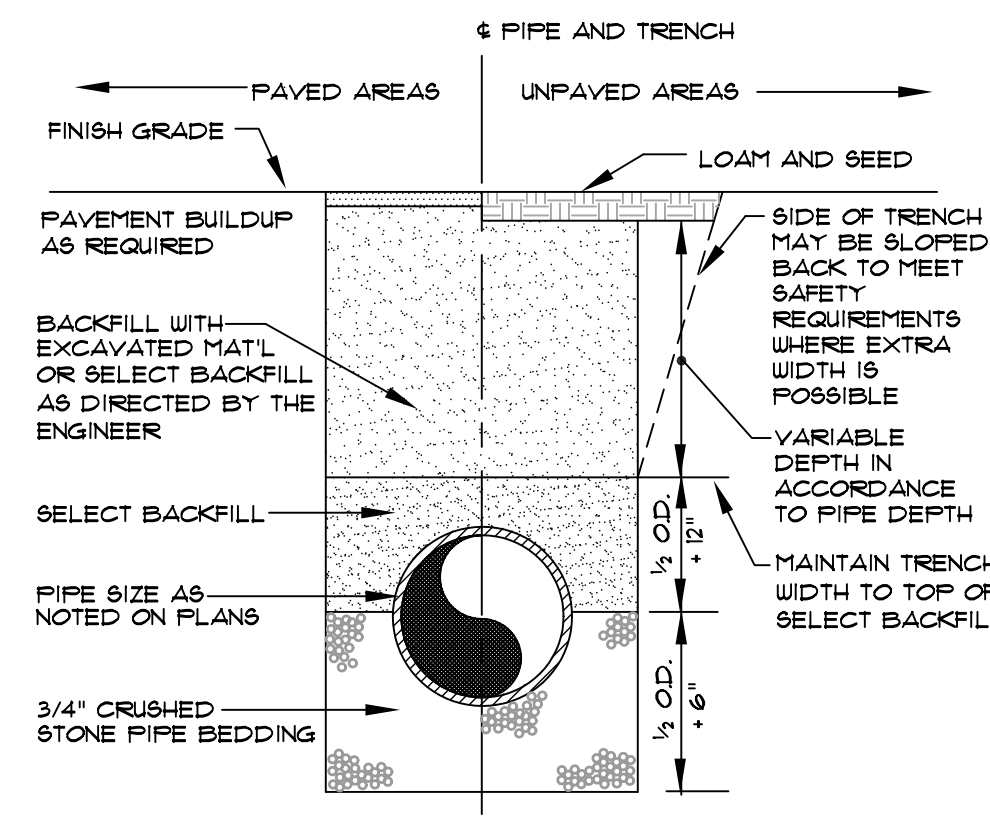
8 CATCH BASIN HAYBALE BARRIER
 NOT TO SCALE



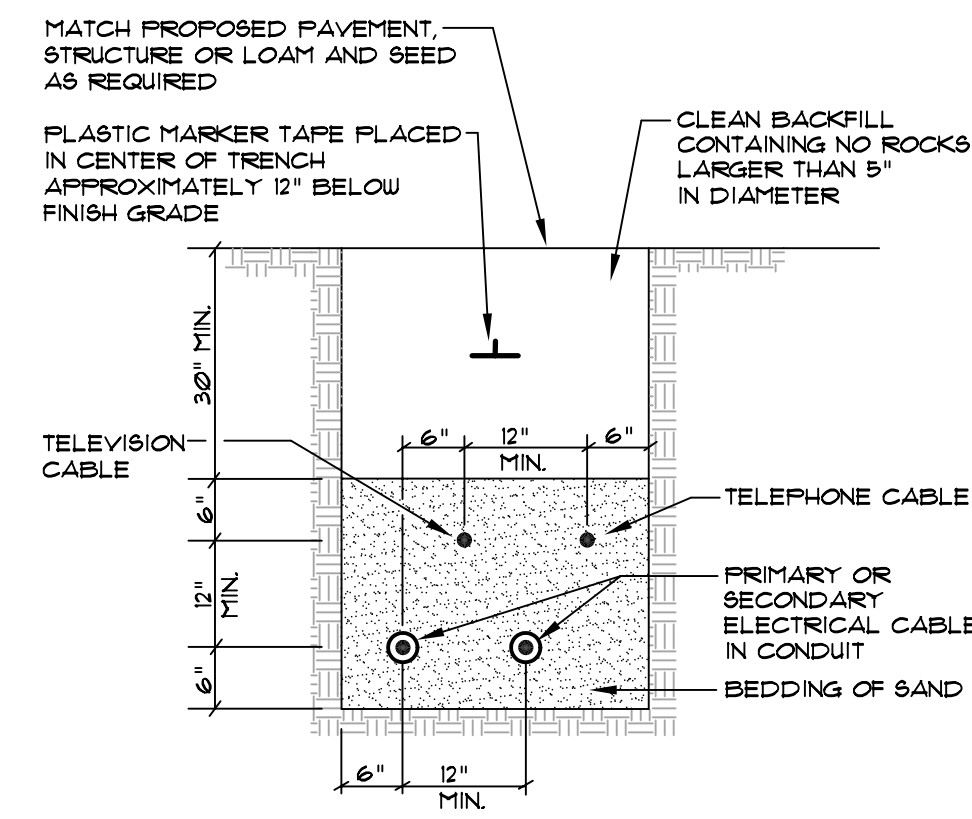
9 5' GRANULAR BASE @ DOOR THRESHOLD
 NOT TO SCALE



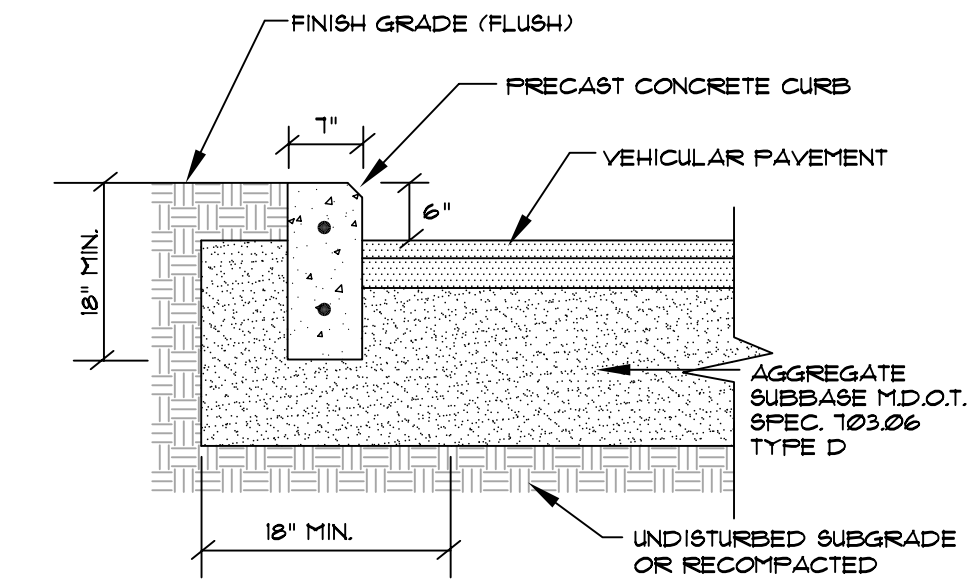
10 TYPICAL TIPDOWN CURB INSTALLATION
 NOT TO SCALE



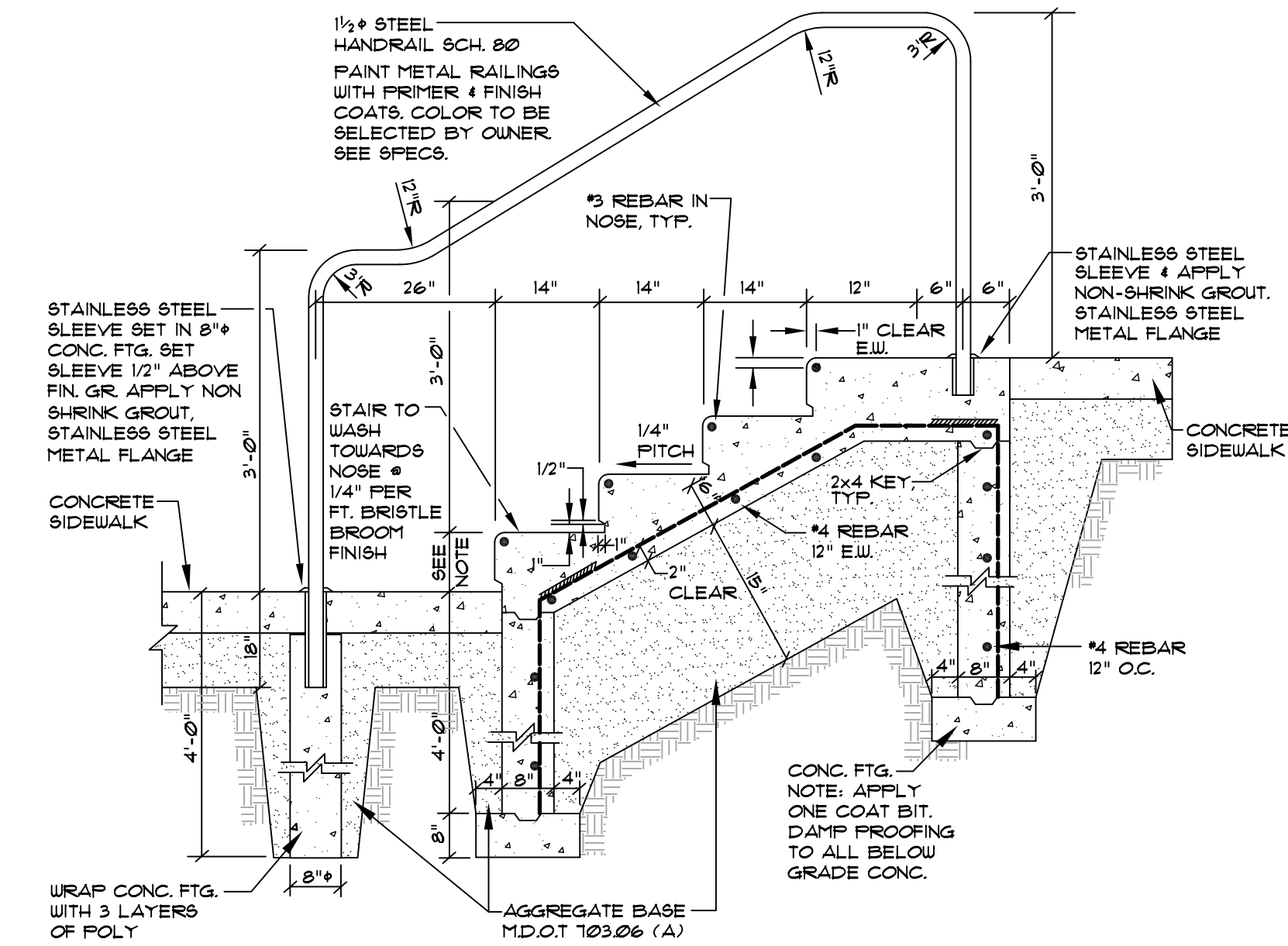
11 TYPICAL TRENCH SECTION
 NOT TO SCALE



12 TYPICAL UNDERGROUND CABLE INSTALLATION
 NOT TO SCALE

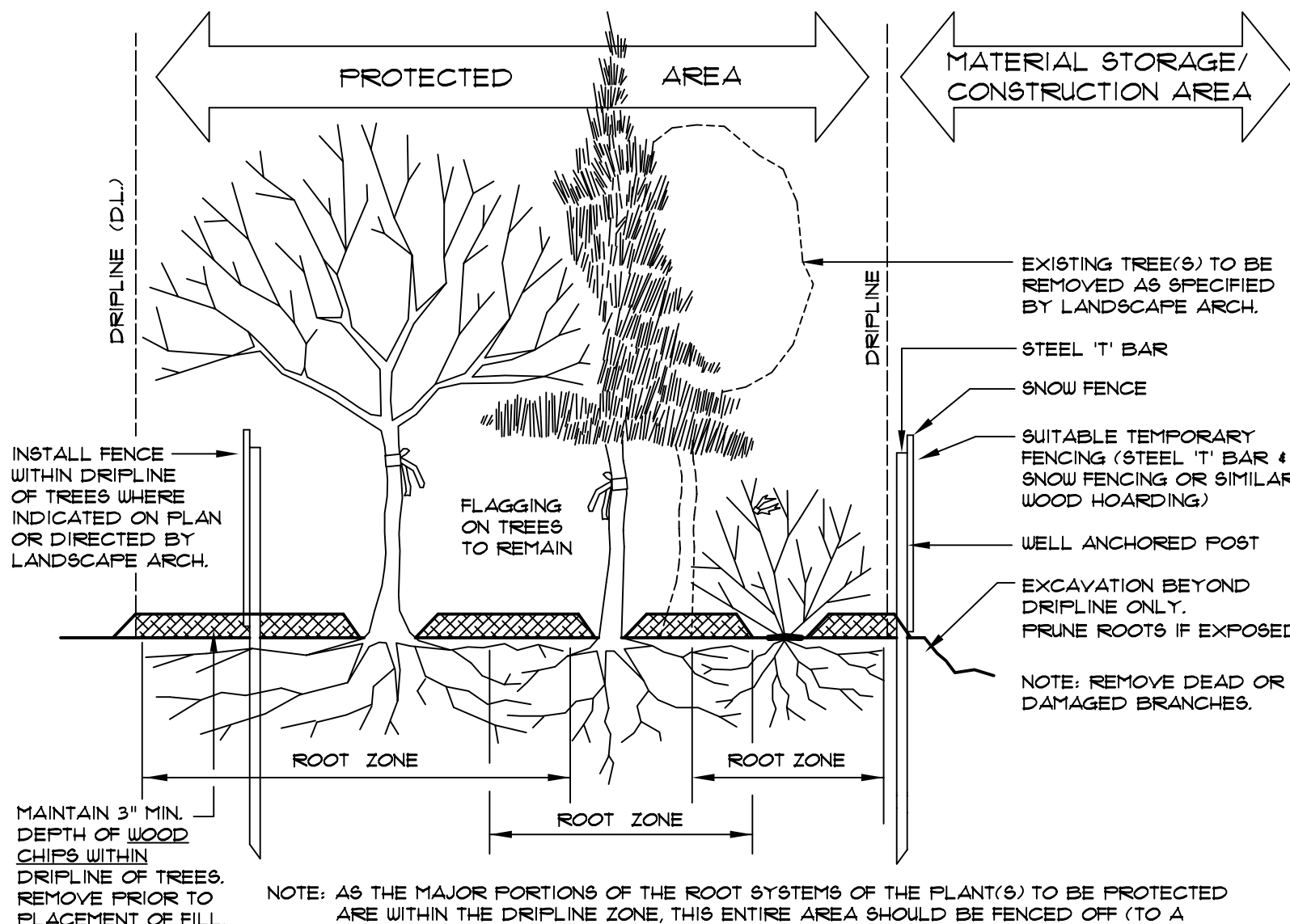


13 PRECAST CONCRETE CURB
 NOT TO SCALE



NOTE:
 SEE PLAN FOR NUMBER OF RISERS AND RISER HEIGHT REQUIRED AT STAIR LOCATIONS

14 CONCRETE STAIR
 NOT TO SCALE



NOTE: AS THE MAJOR PORTIONS OF THE ROOT SYSTEMS OF THE PLANT(S) TO BE PROTECTED ARE WITHIN THE DRIFLINE ZONE, THIS ENTIRE AREA SHOULD BE FENCED OFF (TO A MINIMUM HEIGHT OF 4') PRIOR TO CONSTRUCTION AND REMOVED THEREAFTER FOR MAXIMUM PROTECTION. NO VEHICLE TRAFFIC, EXCAVATION FILL, WASTE DISCHARGE OR OR MATERIAL STORAGE SHOULD BE ALLOWED IN THIS ZONE.

15 TREE PROTECTION DETAIL
 NOT TO SCALE
 CROSS-SECTION OF TYPICAL PLANT GROUPING

C	SGD	05-05-03	ISSUED FOR 85% PHASE I CONSTRUCTION
B	SGD	04-11-03	ISSUED FOR PHASE 1 REVIEW
A	SGD	03-03-03	ISSUED FOR FINAL SITE PLAN APPROVAL
REV.	DATE:	BY:	STATUS:

Sebago Technics
 Engineering Experience You Can Build On
 One Cabot Street
 Westbrook, Me 04098-1339
 Tel (207) 856-0277

PROJECT NO. 00207
 FIELD BOOK DESIGN CHKD DRAWN
 SGD SGD BRF

DETAILS - PHASE 1
 OF:
 ORTHOPAEDIC ASSOCIATES OF PORTLAND P.A.
 30 SWEET STREET
 PORTLAND, MAINE
 FOR:
 ORTHOPAEDIC ASSOCIATES OF PORTLAND P.A.
 P.O. BOX 1260
 PORTLAND, MAINE 04104-1260