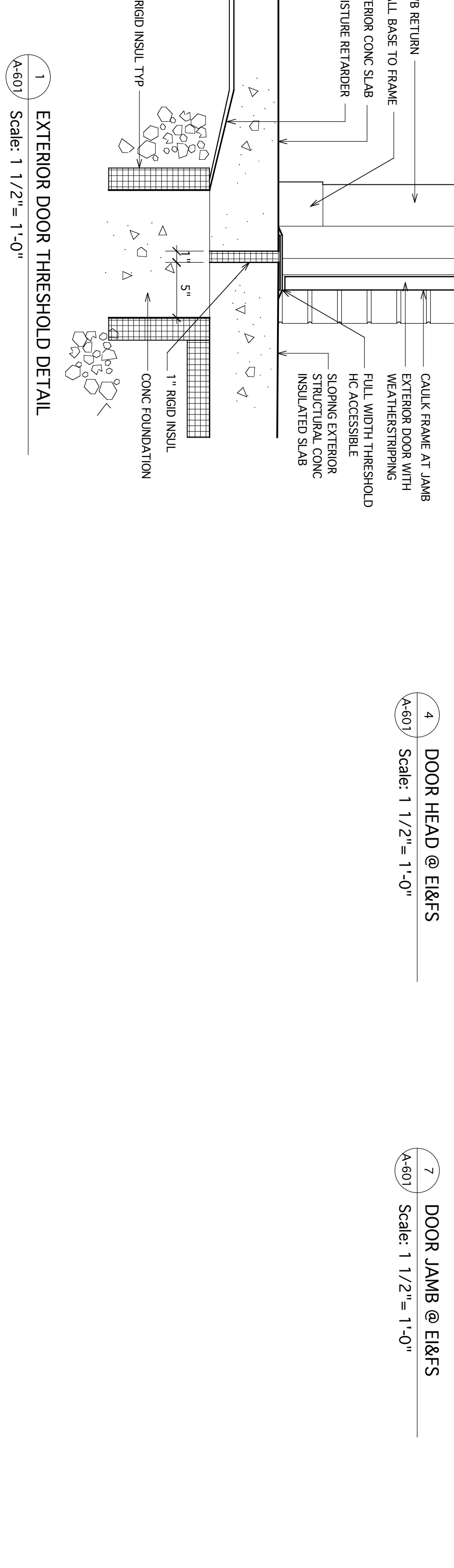
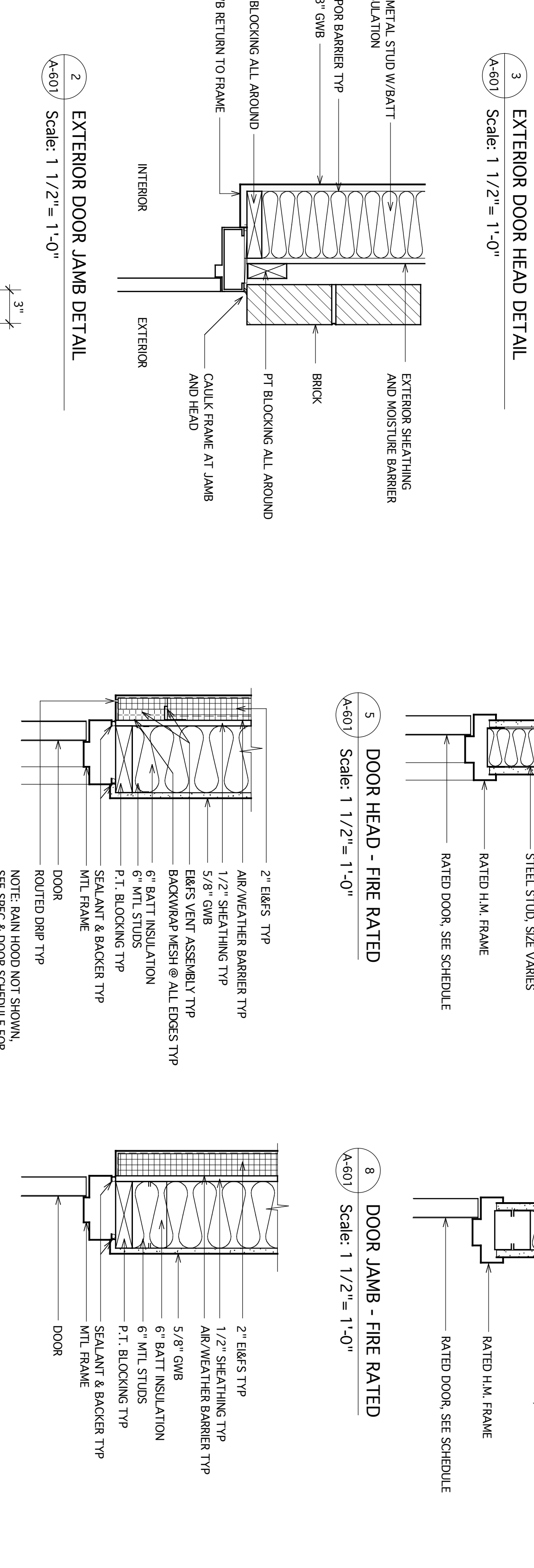
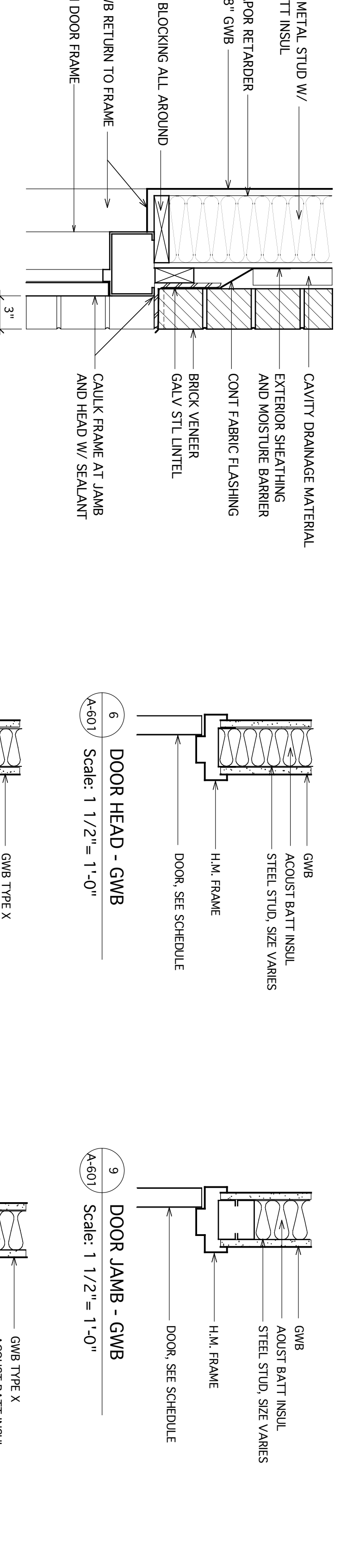


**DOOR TYPES, FRAME TYPES**

ALL EXTERIOR DOORS AND FRAMES TO BE GALVANIZED TYP



DOOR	Location	Type	SIZE	Height	Width	TK	Mtl	Glazing	FRAME	Jamb	Head	FIRE LABEL	FRONT SILE	GENERAL	Remarks
002.1	002	G	3'0"	7'0"	1'3/4"	MTL			1	HM					
003.1	003	A	3'0"	7'0"	1'3/4"	WD			1	HM					
066.1	066	G	3'0"	7'0"	1'3/4"	MTL			1	HM					
146.1	146	existing	3'0"	7'0"	1'3/4"	existing			1	HM					existing door to be relocated
150.1	150	A	3'0"	7'0"	1'3/4"	WD			1	HM					
151.1	151	A	3'0"	7'0"	1'3/4"	WD			1	HM					
153.1	153	A	3'0"	7'0"	1'3/4"	WD			1	HM					
154.1	154	A	3'0"	7'0"	1'3/4"	WD			1	HM					
155.1	155	A	3'0"	7'0"	1'3/4"	WD			1	HM					
157.1	157	A	3'0"	7'0"	1'3/4"	WD			1	HM					
159.1	159	B	3'0"	7'0"	1'3/4"	WD			1	HM					
159A.1	159A	D	(2x) 3'0"	7'0"	1'3/4"	WD			1	HM					
159B.1	159B	D	(2x) 3'0"	7'0"	1'3/4"	WD			1	HM					
161.2	161	B	3'0"	7'0"	1'3/4"	WD			1	HM					
162.1	162	A	3'0"	7'0"	1'3/4"	WD			1	HM					
163.1	163	F	(2x) 3'0"	7'0"	1'3/4"	MTL			4	HM					
164.1	164	A	3'0"	7'0"	1'3/4"	MTL			4	HM					
164A.1	164A	F	(2x) 3'0"	7'0"	1'3/4"	MTL			4	HM					
165.2	165	A	3'0"	7'0"	1'3/4"	WD			1	HM					
165A.1	165A	B	(2x) 3'0"	7'0"	1'3/4"	WD			1	HM					
165A.2	165A.2	G	3'0"	7'0"	1'3/4"	MTL			2	HM					
166.1	166	G	3'0"	7'0"	1'3/4"	MTL			1	HM					
166.2	166	F	3'0"	7'0"	1'3/4"	HM			3	HM					
167.1	167	A	3'0"	7'0"	1'3/4"	WD			1	HM					
168.2	168	A	3'0"	7'0"	1'3/4"	WD			1	HM					
168.2	168	G	3'0"	7'0"	1'3/4"	MTL			1	HM					
169.1	169	H	3'0"	7'0"	1'3/4"	ALUM			1	ALUM					
170.1	170	B	3'0"	7'0"	1'3/4"	WD			1	HM					
170.2	170	B	3'0"	7'0"	1'3/4"	WD			1	HM					
171.2	172	H	4'6"	7'0"	1'3/4"	MTL			6	HM					
172.2	172	J	7'0"	7'0"	1'3/4"	MTL			3	HM					
173.1	173	F	3'0"	7'0"	1'3/4"	MTL			1	HM					
175.1	175	A	3'0"	7'0"	1'3/4"	WD			1	HM					
175.2	175	A	3'0"	7'0"	1'3/4"	WD			1	HM					
176.1	176	A	3'0"	7'0"	1'3/4"	WD			1	HM					
179.1	179	B	3'0"	7'0"	1'3/4"	MTL			1	HM					
182.1	182	B	(2x) 3'0"	7'0"	1'3/4"	WD			2	HM					
183.1	183	F	3'0"	7'0"	1'3/4"	MTL			3	HM					
183A.1	183A	G	3'4"	7'0"	1'3/4"	MTL			1	HM					
183A.2	183A.2	G	3'4"	7'0"	1'3/4"	MTL			1	HM					
201.1	201	B	3'0"	7'0"	1'3/4"	WD			1	HM					
202.1	202	A	3'0"	7'0"	1'3/4"	WD			1	HM					
203.1	203	A	3'0"	7'0"	1'3/4"	WD			1	HM					
204.1	204	A	3'0"	7'0"	1'3/4"	WD			1	HM					
204.1	204	A	3'0"	7'0"	1'3/4"	WD			1	HM					
205.1	205	A	3'0"	7'0"	1'3/4"	WD			1	HM					
207.1	207	A	3'0"	7'0"	1'3/4"	WD			1	HM					
208.1	208	A	3'0"	7'0"	1'3/4"	WD			1	HM					
208.2	208	A	3'0"	7'0"	1'3/4"	WD			1	HM					
209.1	209	A	3'0"	7'0"	1'3/4"	WD			1	HM					
210.1	210	A	3'0"	7'0"	1'3/4"	WD			1	HM					
211.1	211	A	3'0"	7'0"	1'3/4"	WD			1	HM					
212.1	212	A	3'0"	7'0"	1'3/4"	WD			1	HM					
215.1	215	B	3'0"	7'0"	1'3/4"	WD			1	HM					
216.1	216	A	3'0"	7'0"	1'3/4"	WD			1	HM					
217.1	217	A	3'0"	7'0"	1'3/4"	WD			1	HM					
218.1	218	A	3'0"	7'0"	1'3/4"	WD			1	HM					
219	219	B	3'0"	7'0"	1'3/4"	MTL			1	HM					
260.1	260	G	3'0"	7'0"	1'3/4"	MTL			1	HM					

ORTHOPAEDIC ASSOCIATES, PA  
BUILDING EXPANSION  
33 SEAWALL STREET  
PORTLAND, MAINE

HKTA / architects, inc.  
4 Milk Street  
Portland, Maine 04101  
phone: 207.774.6016  
fax: 207.774.9128  
e-mail: hkta@hktai.com

Project Title: **DOOR SCHEDULE**

Design No: **A-601**

Scale: 1/2" = 1'-0"