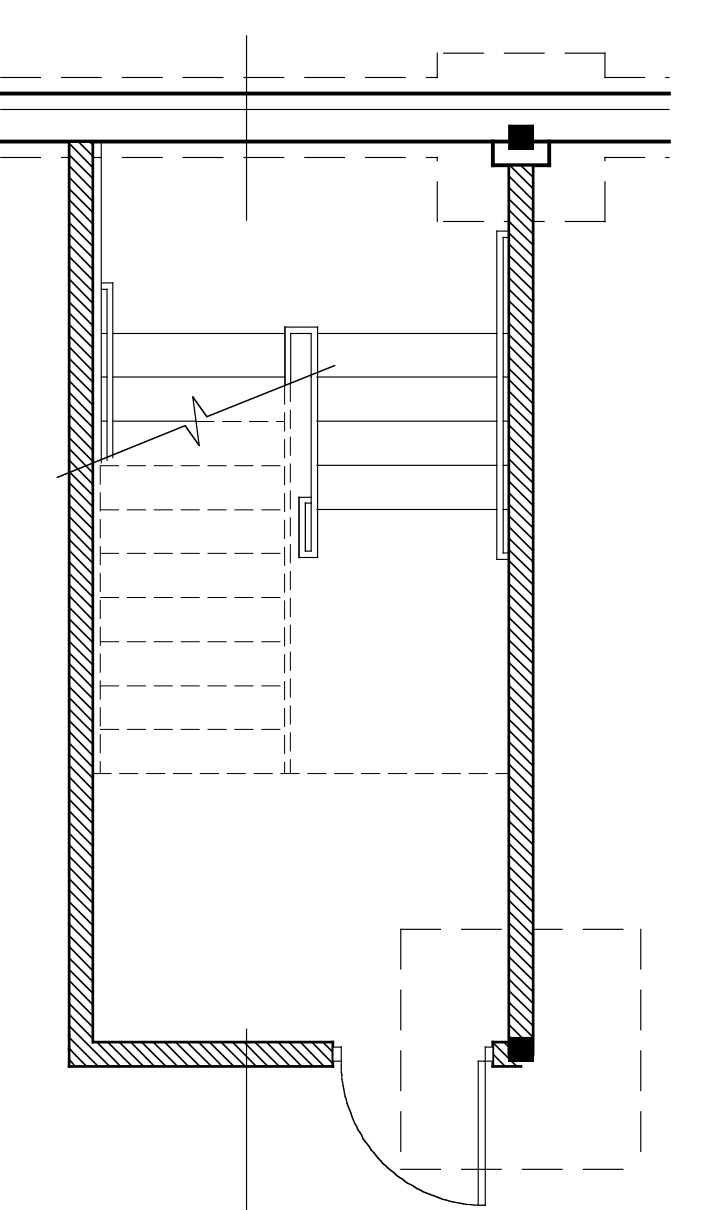
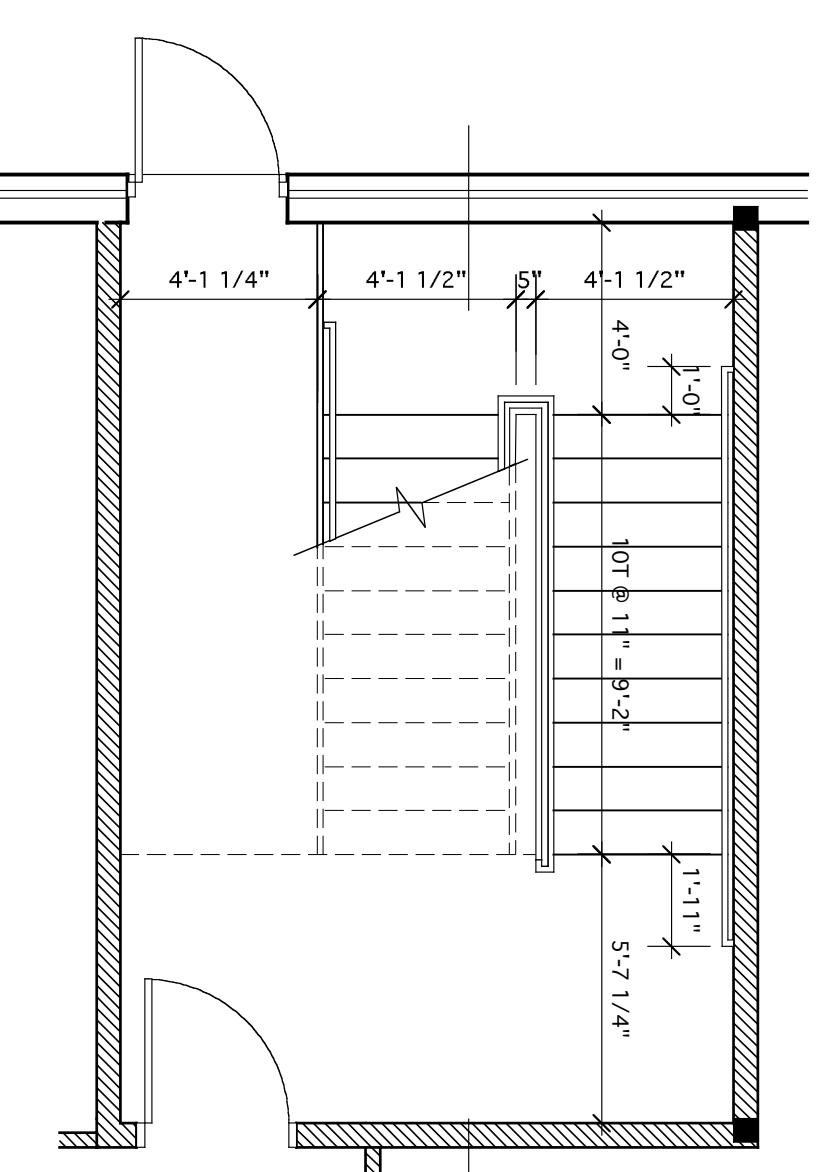


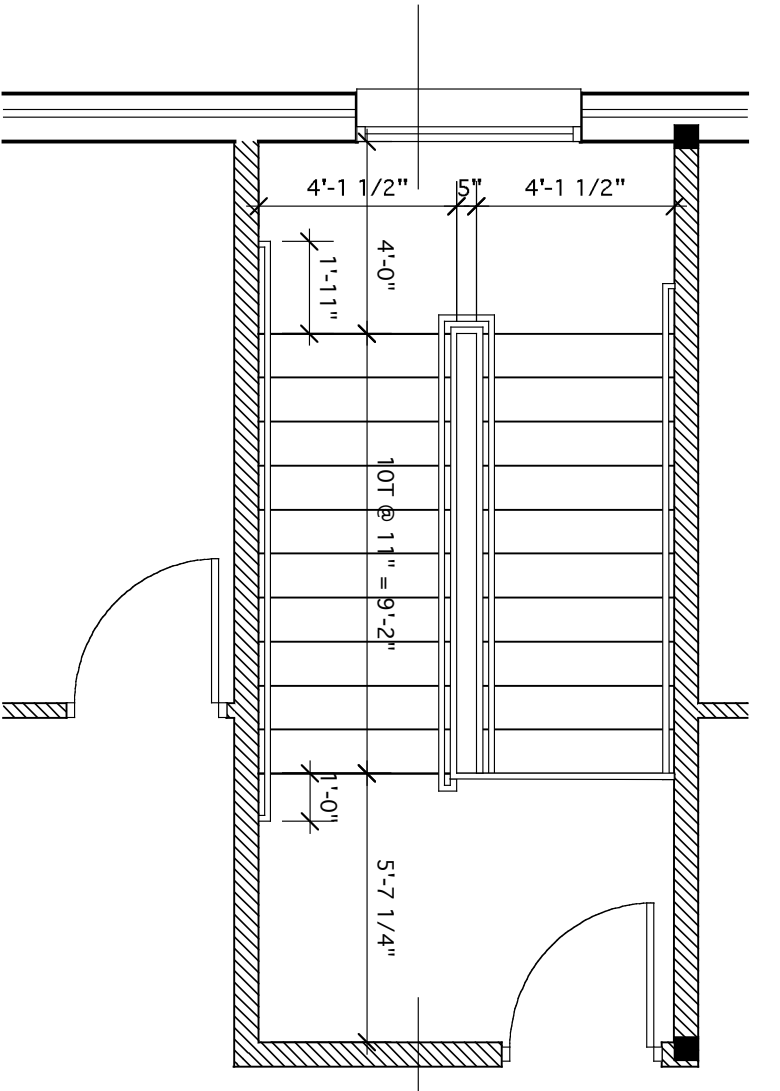
6 ENLARGED PARTIAL PLAN - OPERATING ROOMS  
A-401 Scale: 1/4" = 1'-0"



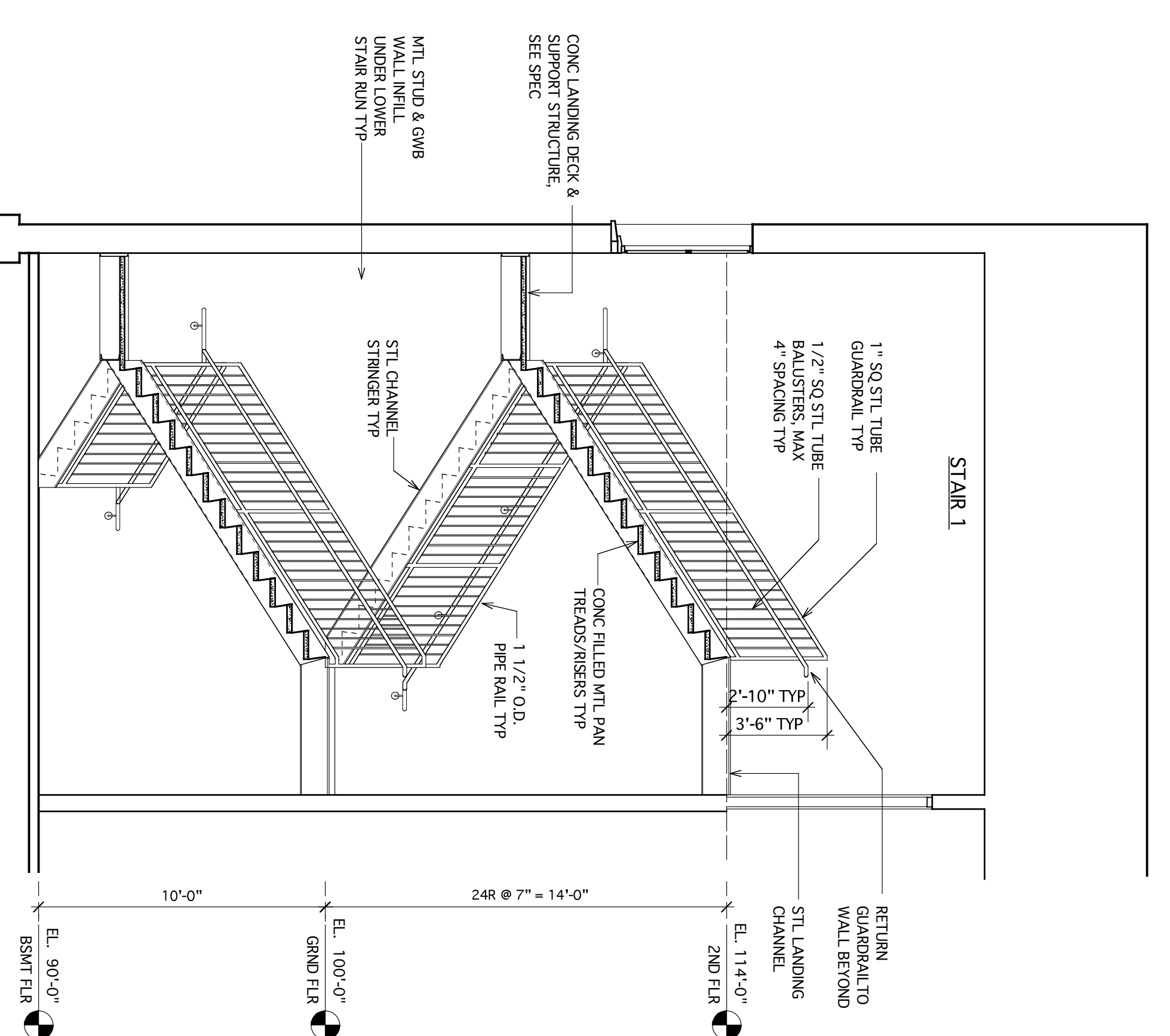
1 ENLARGED PLAN STAIR 1 - BASEMENT  
A-401 Scale: 1/4" = 1'-0"



2 ENLARGED PLAN STAIR 1 - 1ST FLOOR  
A-401 Scale: 1/4" = 1'-0"



3 ENLARGED PLAN STAIR 1 - 2ND FLOOR  
A-401 Scale: 1/4" = 1'-0"



4 SECTION @ STAIR 1  
A-401 Scale: 1/4" = 1'-0"

<p>ORTHOPAEDIC ASSOCIATES, PA BUILDING EXPANSION 33 SEWALL STREET PORTLAND, MAINE</p>		<p>Project No. A-401</p>	<p>Client ORTHOPAEDIC ASSOCIATES, PA</p>	<p>Architect HKTa / architects, inc. 4 Milk Street Portland, Maine 04101 phone: 207.774.6016 fax: 207.774.9128 e-mail: hkt@aol.com</p>
<p>Revision/Description</p>	<p>Date</p>	<p>Mark</p>	<p>Description</p>	<p>Drawn By Checked By Designed By Reviewed By Submitted By Approved By Scale: 1/4" = 1'-0"</p>

