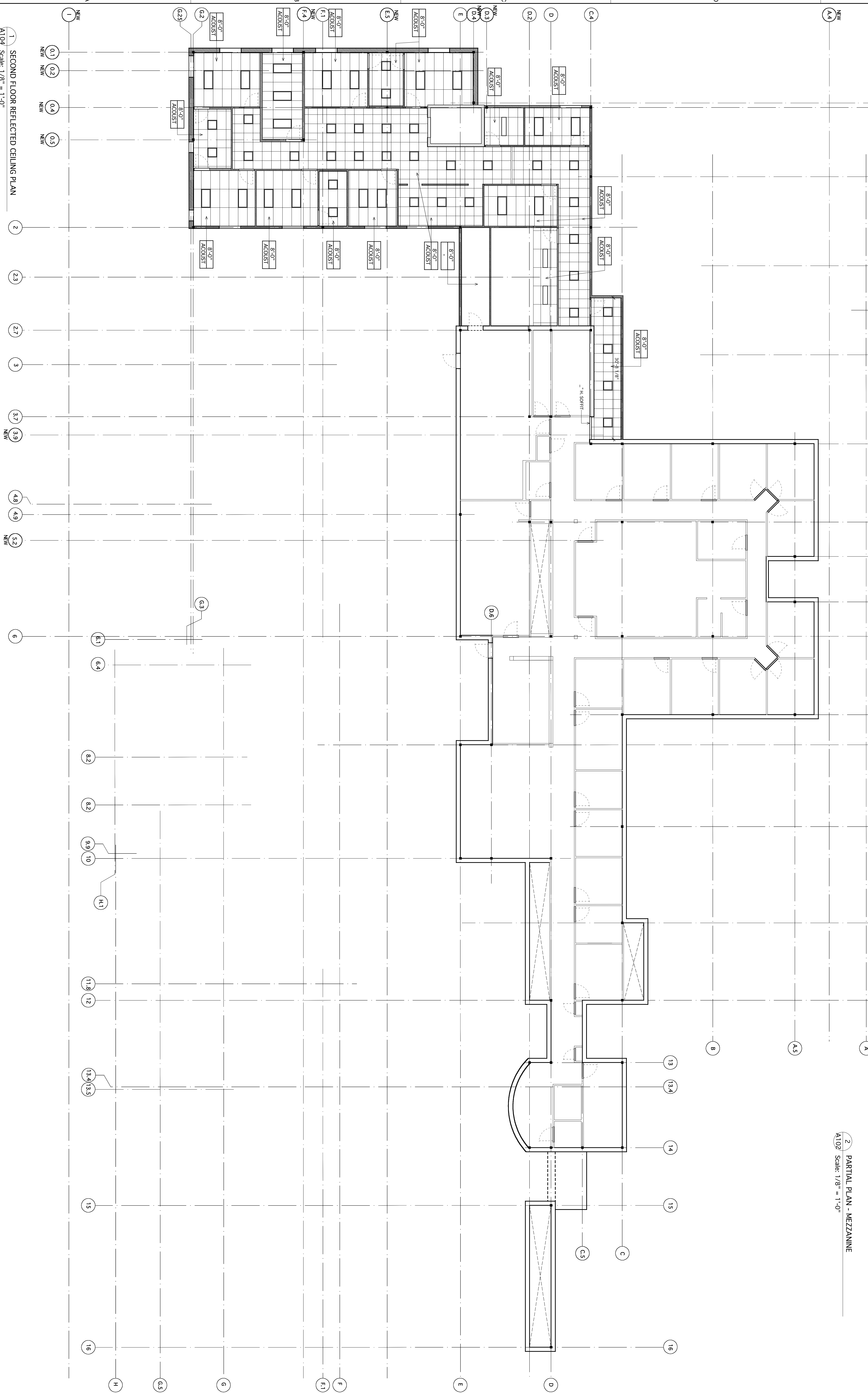
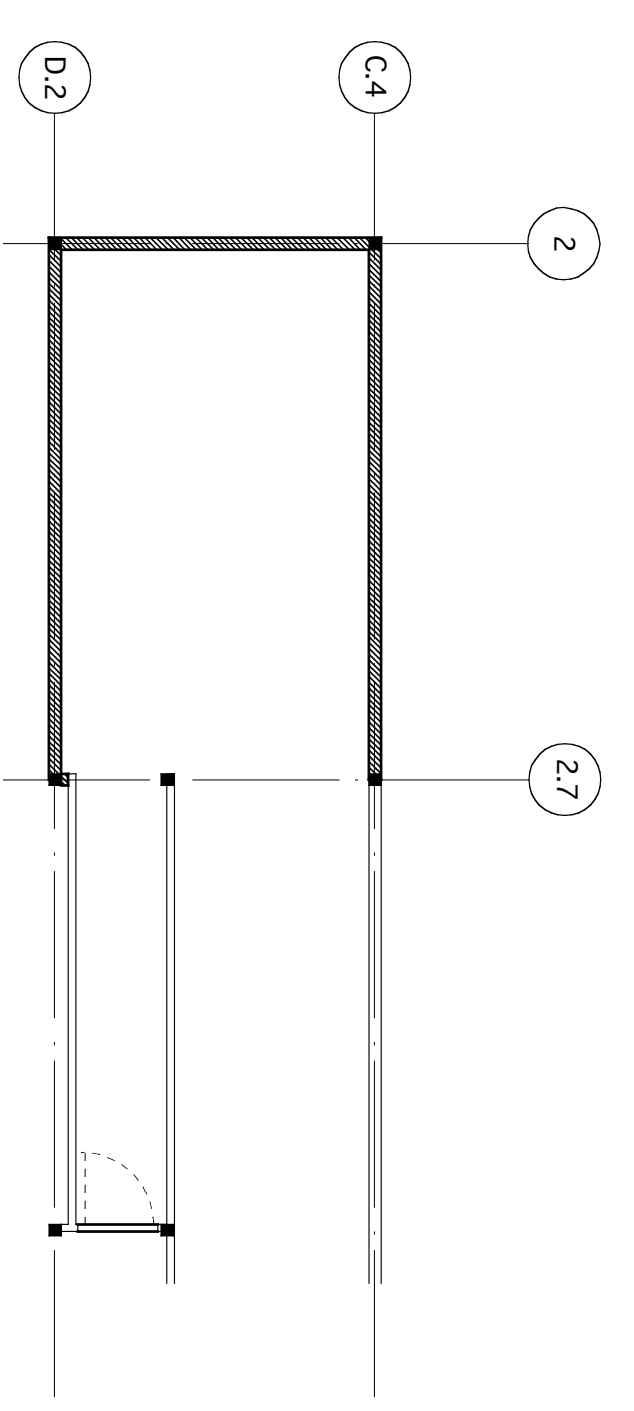


ORTHOPAEDIC ASSOCIATES, PA
BUILDING EXPANSION
33 SEWALL STREET
PORTLAND, MAINE

Mark	Date	Description
1	2/11/03	Revision/Issue Memo

Reproduction
Copyright © 2003 HKTA
Owner: Orthopaedic Associates, PA
Contract: 03000118 O.A. Phase 2
Designed by: Brian O'Connell
Checked by: Chris Egan
Issue Date: 4/14/03
First Date: 4/15/03
Reviewed by: E.H.R.
Designed by: Submitted By:
Checked by: Red Ceiling Plans 2
Scale: 1/8" = 1'-0"

Drawing No.
A-104
of 94



1 SECOND FLOOR REFLECTED CEILING PLAN
A104 Scale: 1/8" = 1'-0"