

HEAT PUMP SCHEDULE

UNIT	COOLING					HEATING						
	E.S. P. ¹	TOT. MBH	SENS. MBH	TOT. MBH	GPM	WFD FT.	MFGR MODEL #	REMARKS	CONN.	CFM	MCA FUSE	
HP-114	0.50	6.7	4.5	9.3	1.2	1.7	GHH00CT-MO-B1C	①②③④⑤⑥⑦⑧	1/2"	195	3.6	15
HP-102,201,202,304,305,306,309,310,401,402,403,412	0.50	12.1	0.5	14.1	2.4	4.8	GHH00127-MO-B1C	①②③④⑤⑥⑦⑧	3/4"	390	6.1	15
HP-101,102,311,415	0.50	18.0	11.6	23.4	3.6	8.4	GHH00187-MO-B1C	①②③④⑤⑥⑦⑧	3/4"	585	8.7	15
HP-406	0.50	24.7	17.4	32.7	4.8	4.3	GHH00144-MO-B1B	①②③④⑤⑥⑦⑧	1"	780	5.8	15
HP-103,301,305,402	0.50	27.3	18.0	34.6	6.0	7.7	GHH0034-MO-B1C	①②③④⑤⑥⑦⑧	1"	975	6.0	15
HP-403,410,411	0.50	35.9	26.2	47.9	7.2	14.0	GHH0034-MO-B1B	①②③④⑤⑥⑦⑧	1-1/4"	1170	7.8	15
HP-NONE	0.50	46.3	33.1	60.1	9.6	15.7	GHH00144-MO-B1B	①②③④⑤⑥⑦⑧	1-1/4"	1560	10.7	15
HP-307,41,3,4,11,6	0.50	24.7	17.4	32.7	4.8	4.3	GHH00144-MO-B1B	①②③④⑤⑥⑦⑧	1"	780	5.8	15
HP-303,407,408	0.50	35.9	26.2	47.9	7.2	14.0	GHH0034-MO-B1B	①②③④⑤⑥⑦⑧	1-1/4"	1170	7.8	15
HP-405,409	0.50	46.3	33.1	60.1	9.6	15.7	GHH00144-MO-B1B	①②③④⑤⑥⑦⑧	1-1/4"	1560	10.7	15

REMARKS: ① BASED ON VOLUME ② QUANTITIES BASED ON APPROXIMATE 55°F I.A.T. SUPPLIES
 ③ QUANTITIES BASED ON 90°F RETURN UNIT SUPPLY ④ TRACER MODEL CONTROL ⑤ MFGR/DISCONNECT ⑥ 277V/11460VZ
 ⑦ HEATING BASED ON 70°F F.A.T. 65°F RWT ⑧ DISCHARGE CONFIGURATION SHOWN ON DRAWINGS
 ⑨ PROVIDE HIGHER REHEAT, WATER SENSOR, & HUMIDITY SENSOR

DIFFUSERS, GRILLES, REGISTERS

SYMBOL	MFR & MODEL#	SIZE	CFM	NC	PD	THROW	CONN.	REMARKS
A	ANDUOSIAT #RFL	6" DIA.	0-100	<20	0.03	2-6	6" DIA.	ED 6R10
B	ANDUOSIAT #RFL	6" DIA.	101-200	<20	0.01	3-8	6" DIA.	ED 6R10
C	ANDUOSIAT #RFL	10" DIA.	201-400	<29	0.05	5-14	10" DIA.	ED 6R10
D	ANDUOSIAT #RFL	12" DIA.	401-640	<49	0.03	7-17	12" DIA.	ED 6R10
E	ANDUOSIAT #RFL	12" DIA.	0-350	<25	0.04	---	---	---
F	ANDUOSIAT #R310	12" DIA.	351-700	<25	0.04	---	---	---
G	ANDUOSIAT #R321	24" DIA.	701-1300	<30	0.03	---	---	---
H	ANDUOSIAT #R210	12" DIA.	0-100	<20	0.02	9-15	6" DIA.	VD
J	ANDUOSIAT #R210	12" DIA.	101-200	<20	0.02	11-18	6" DIA.	VD
K	ANDUOSIAT #R210	15" DIA.	201-350	<20	0.02	13-20	10" DIA.	VD
L	ANDUOSIAT #R210	24" DIA.	351-1450	<20	0.02	15-28	10" DIA.	VD
M	ANDUOSIAT #S100	6" DIA.	0-100	<20	0.02	---	---	VD
N	ANDUOSIAT #S100	6" DIA.	101-200	<20	0.06	3-6	6" DIA.	VD
P	ANDUOSIAT #S100	9" DIA.	201-350	<20	0.06	4-9	9" DIA.	VD
Q	ANDUOSIAT #S100	9" DIA.	351-500	<20	0.06	5-11	9" DIA.	VD
R	ANDUOSIAT #S100	12" DIA.	501-1000	<15	0.03	7-14	12" DIA.	VD
LD-1	ANDUOSIAT #R3D-100	4" DIA.	50A*	<15	0.03	---	---	VD
LD-2	ANDUOSIAT #R3D-100	2 1/2" DIA.	300-550	<20	0.02	11-16	12" DIA.	VD
T	ANDUOSIAT #R3S100	1 1/2" DIA.	450-900	<20	0.04	---	---	VD
U	ANDUOSIAT #R3S100	1 1/2" DIA.	701-200	<20	0.02	---	---	VD
V	ANDUOSIAT #R3S100	2 1/2" DIA.	150-250	<20	0.04	---	---	VD
X	ANDUOSIAT #R3S100	1 1/2" DIA.	351-650	<25	0.04	---	---	VD & HEPA FILTERS

PUMP SCHEDULE

UNIT NO.	LOCATION	GPM	HP	H.P.	RPM	ELECT. MOD. #	REMARKS
P-1	MICH. RM.	300	90	15	1750	480360 2510	MAIN PUMPS
P-2	MICH. RM.	300	90	15	1750	480360 2510	MAIN PUMPS
P-3	MICH. RM.	40	15	3/4	1750	480360 1611	1ST FL. INJECTION PUMP
P-4	MICH. RM.	40	15	3/4	1750	480360 1611	2ND FL. INJECTION PUMP
P-5	MICH. RM.	55	20	3/4	1725	480360 1611	4TH FL. INJECTION PUMP
P-6	MICH. RM.	5	7	1/12	3450	1201/160 CO7	1ST FL. DRW REHEAT PUMP
P-7	MICH. RM.	5	7	1/12	3450	1201/160 CO7	2ND FL. DRW REHEAT PUMP
P-8	MICH. RM.	5	7	1/12	3450	1201/160 CO7	4TH FL. DRW REHEAT PUMP

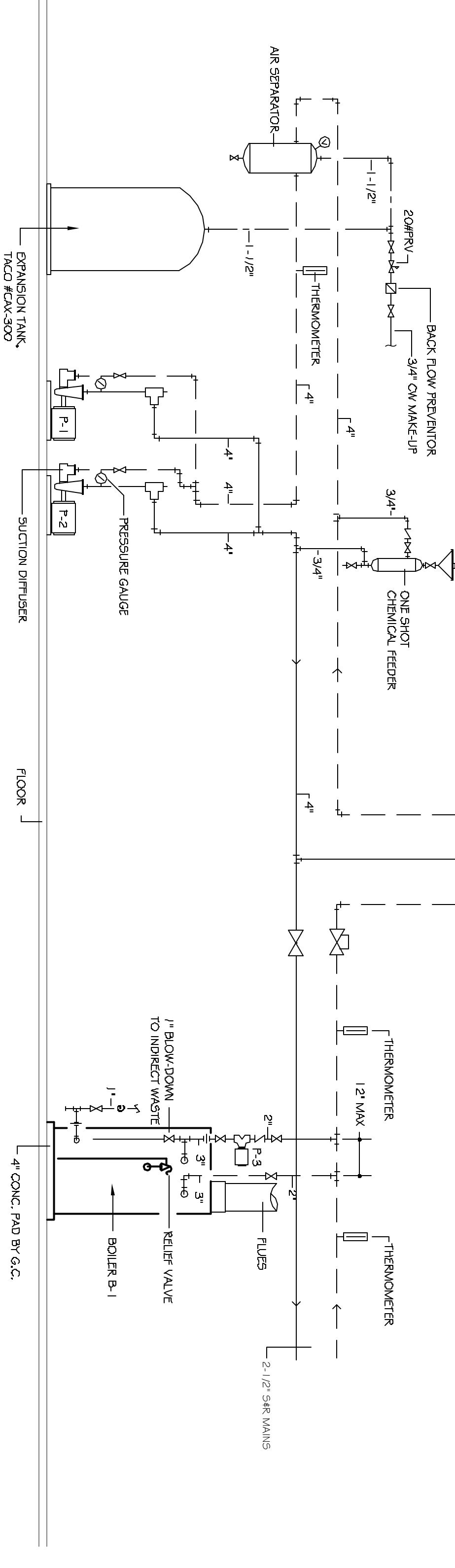
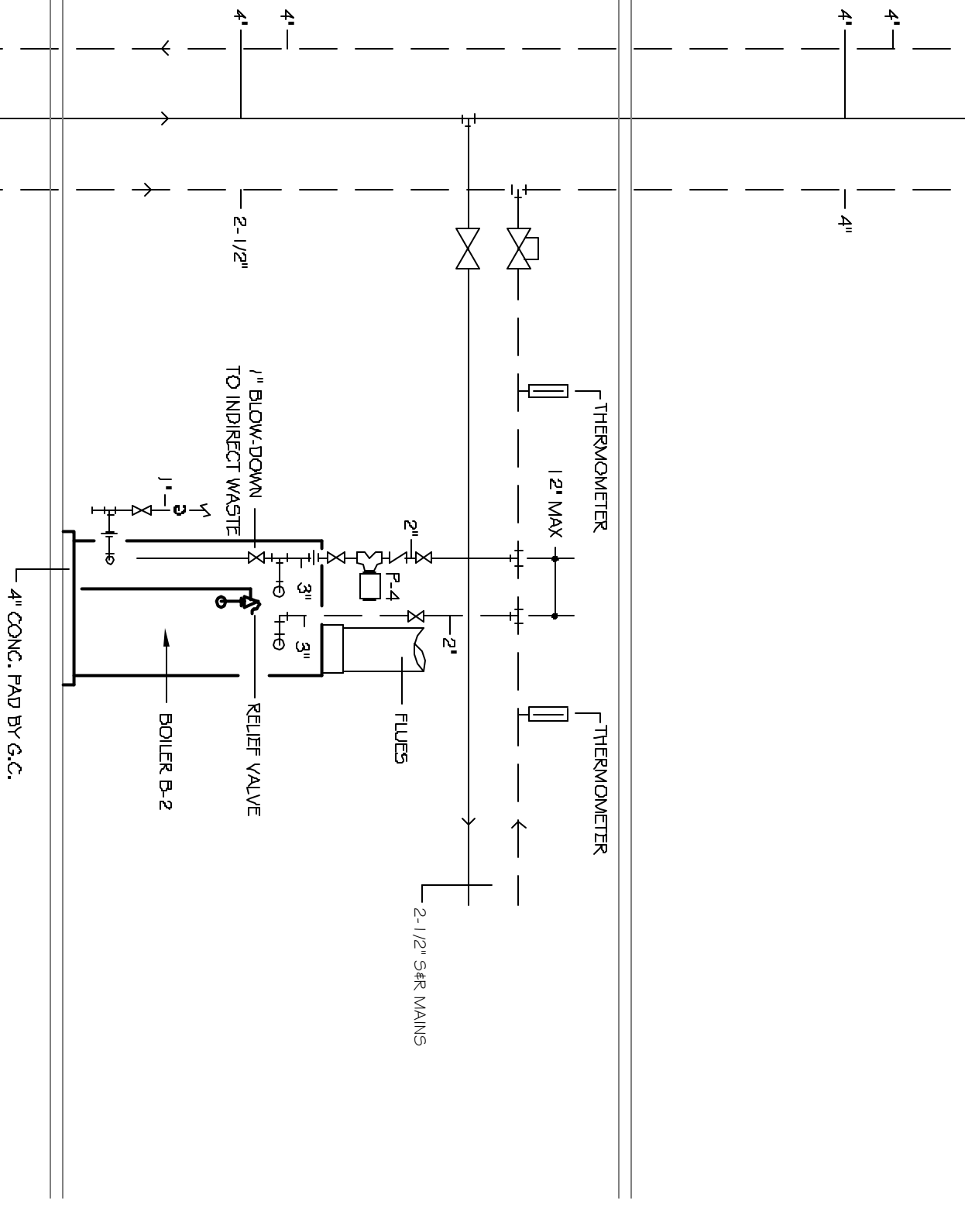
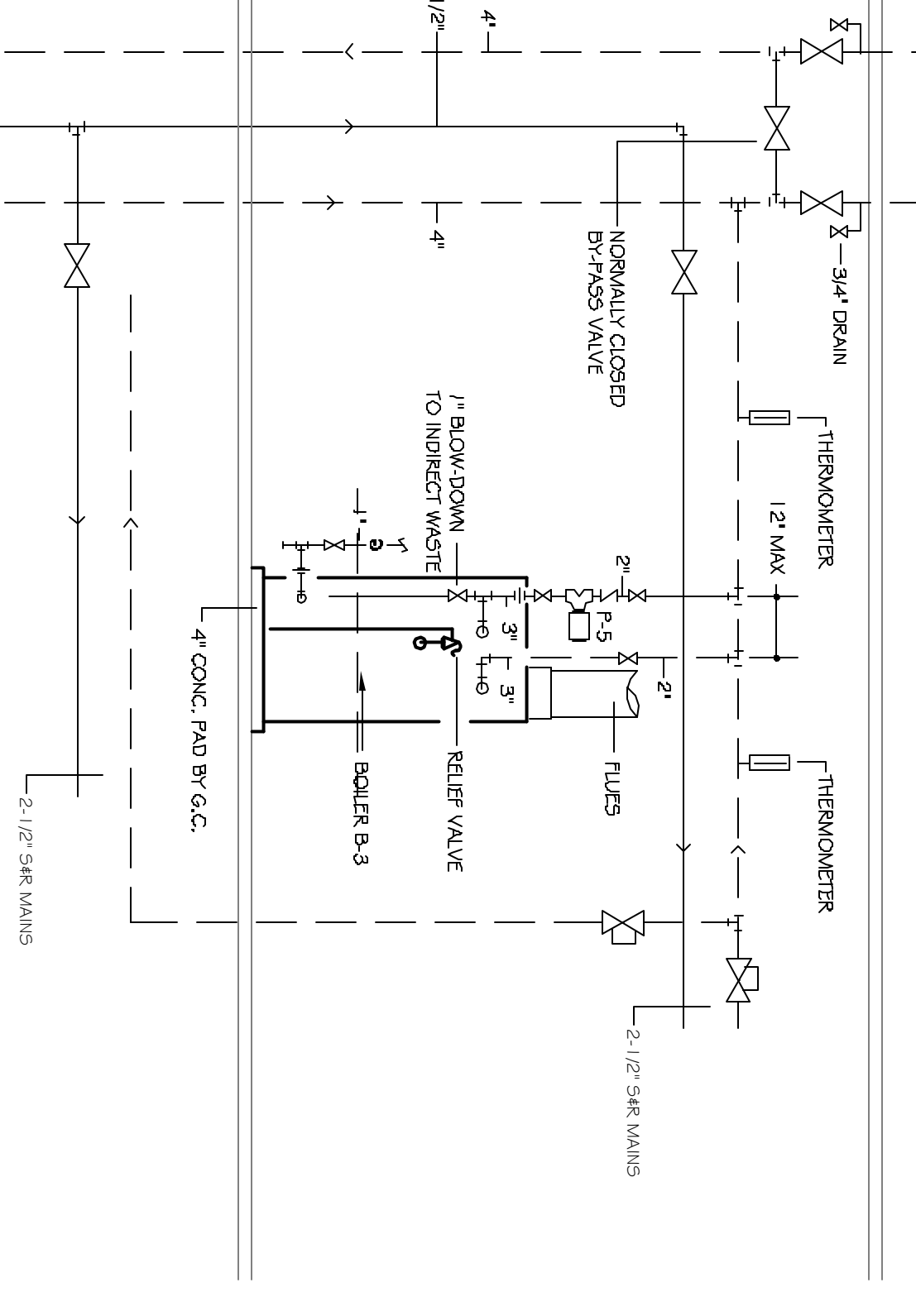
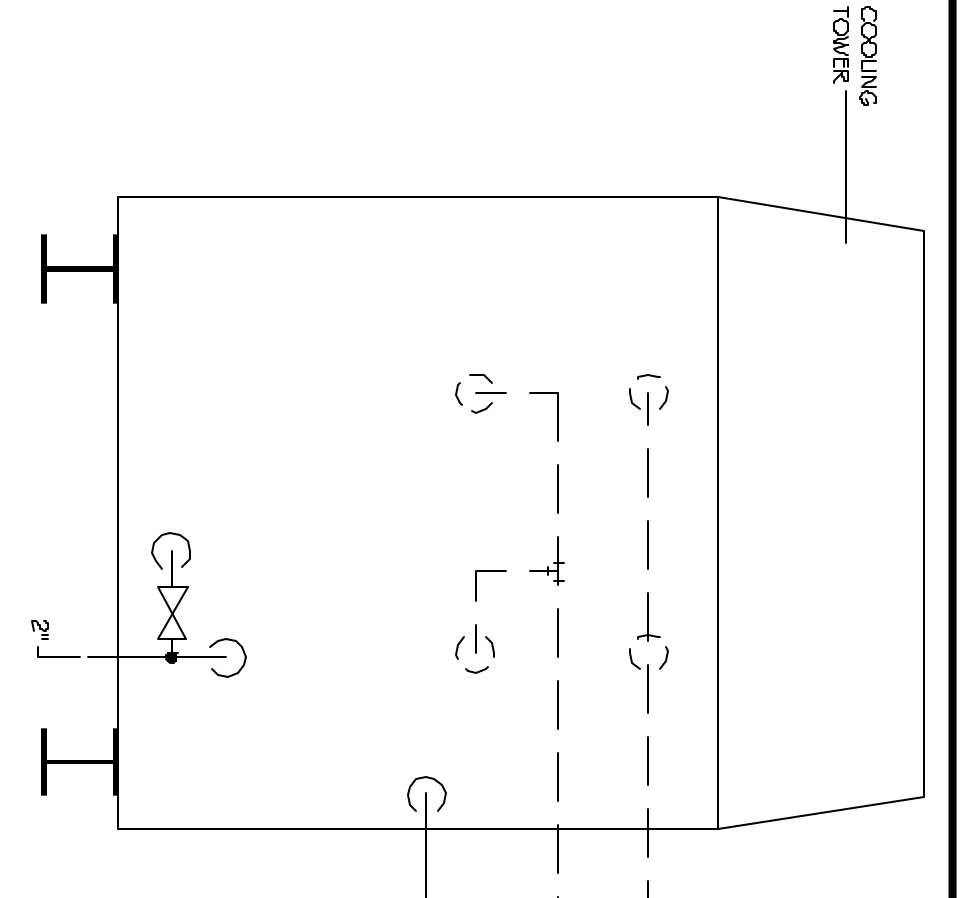
EXHAUST FAN SCHEDULE

UNIT NO.	LOCATION	TYPE	GPM	S.P.	HP/W	RPM	TYPICAL UNIT MFG. # MODEL NO.	REMARKS
EF-1	CELV. MACHINE	CEILING	350	.25	243	1050	FRN.ZEPHER 2105	①②③④⑤⑥⑦
EF-2	ROOF	ROOF	700	.63	1/4	1725	FRN. DX130	①②③④⑤⑥⑦
EF-3	ROOF	ROOF	700	.63	1/4	1725	FRN. DX130	①②③④⑤⑥⑦
EF-4	ROOF	ROOF	700	.63	1/4	1725	FRN. DX130	①②③④⑤⑥⑦
EF-5	ROOF	ROOF	700	.63	1/4	1725	FRN. DX130	①②③④⑤⑥⑦
EF-6	ROOF	ROOF	340	.30	1/7	1725	FRN. DX11R	①②③④⑤⑥⑦

- FANS BASED ON: RPM, SEE SPECIFICATIONS FOR ACCEPTABLE MANUFACTURERS, 54" x 1' & 2' BASED ON MANUFACT.
1. THERMOSTAT CONTROLLED
 2. BACKDRIFT DAMPER
 3. WALL DISCHARGE CAP
 4. 120V - 1 PHASE, 60 HZ
 5. SPEED CONTROL
 6. ROOF CURB (SEE PLANS FOR ROOF SLOPE)
 7. FACTORY MOUNTED DISCONNECT SWITCH
 8. 480V, 3 PHASE, 60 HZ
 9. ROOF DISCHARGE CAP #9A.20.

HVAC EQUIPMENT

1. MAKEUP AIR UNITS, DIRECT GAS, FIBRO
 - MUA-1 TRANE #68CA150PHO, 1500 CFM @ 1.0" S.P., 1 HP MOTOR, 150 MPH, 480/360, COMPLETE WITH INTAKE HOOD, MOD. FILTERS, 85 HEAT EXCHANGER, 88V33"X44" HIGH, 850 POUNDS
 - MUA-2 TRANE #68CA150PHO, 1500 CFM @ 1.0" S.P., 1 HP MOTOR, 150 MPH, 480/360, COMPLETE WITH INTAKE HOOD, MOD. FILTERS, 85 HEAT EXCHANGER, 88V33"X44" HIGH, 850 POUNDS
 - MUA-3 TRANE #68CA300PHO, 3000 CFM @ 1.0" S.P., 2 HP MOTOR, 300 MPH, 480/360, COMPLETE WITH INTAKE HOOD, MOD. FILTERS, 85 HEAT EXCHANGER, 88V55"X44" HIGH, 1775 POUNDS
2. BOILERS
 - B-1 LOCHINVAR #PB-500, 500 MBH INPUT, 440 MBH OUTPUT, GAS HEED, DIRECT VENT, 115V/1460VZ 24"X36"X42" HIGH, 7" FLUE, 800 POUNDS
 - B-2 LOCHINVAR #PB-500, 500 MBH INPUT, 440 MBH OUTPUT, GAS HEED, DIRECT VENT, 115V/1460VZ 24"X36"X42" HIGH, 7" FLUE, 800 POUNDS
 - B-3 LOCHINVAR #PB-750, 750 MBH INPUT, 660 MBH OUTPUT, GAS HEED, DIRECT VENT, 115V/1460VZ 24"X56"X53" HIGH, 8" FLUE, 915 POUNDS
3. COOLING TOWER
 - B/C AIR-CO2, 320, W/ DISCH. HOODS, 30 HP PRIMARY FAN, 10 HP LOW SPEED FAN, 1-1/2" HP 1/2" 5 KW SLUMP HEATER, 300 GPM, 105°F RWT, 90°F LWT, 74°F W.D., 460V-3-4-60HZ, NEMA 4 STRIKER 15,760 POUNDS
4. ELECTRIC UNIT HEATER
 - Q/MARKER OR EQUAL, 1500 WATT HEATER WITH FAN & INTEGRAL THERMOSTAT, 277V/1160



SCHEMATIC MECHANICAL ROOM, TOWER, & RISER DIAGRAM