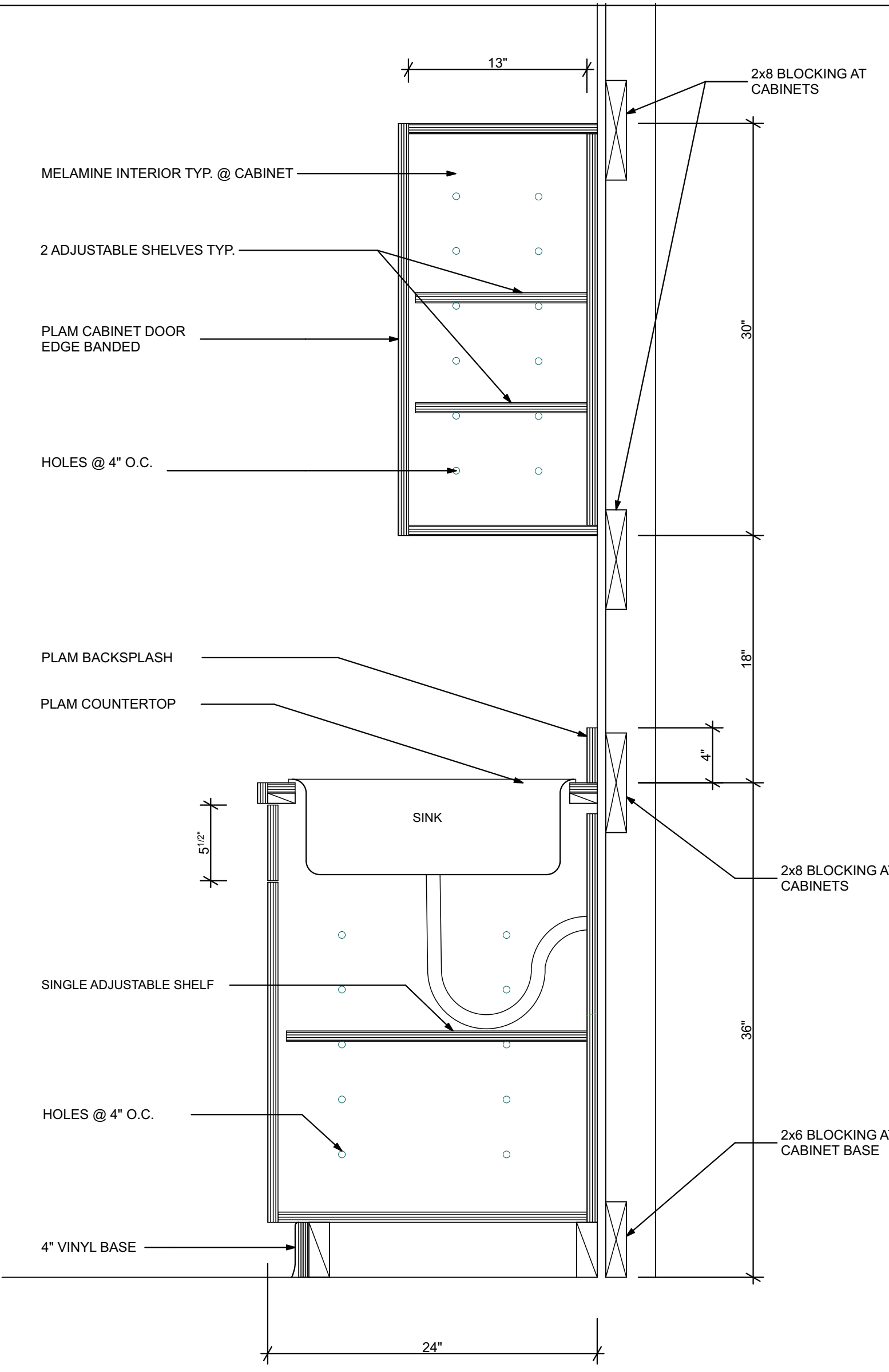
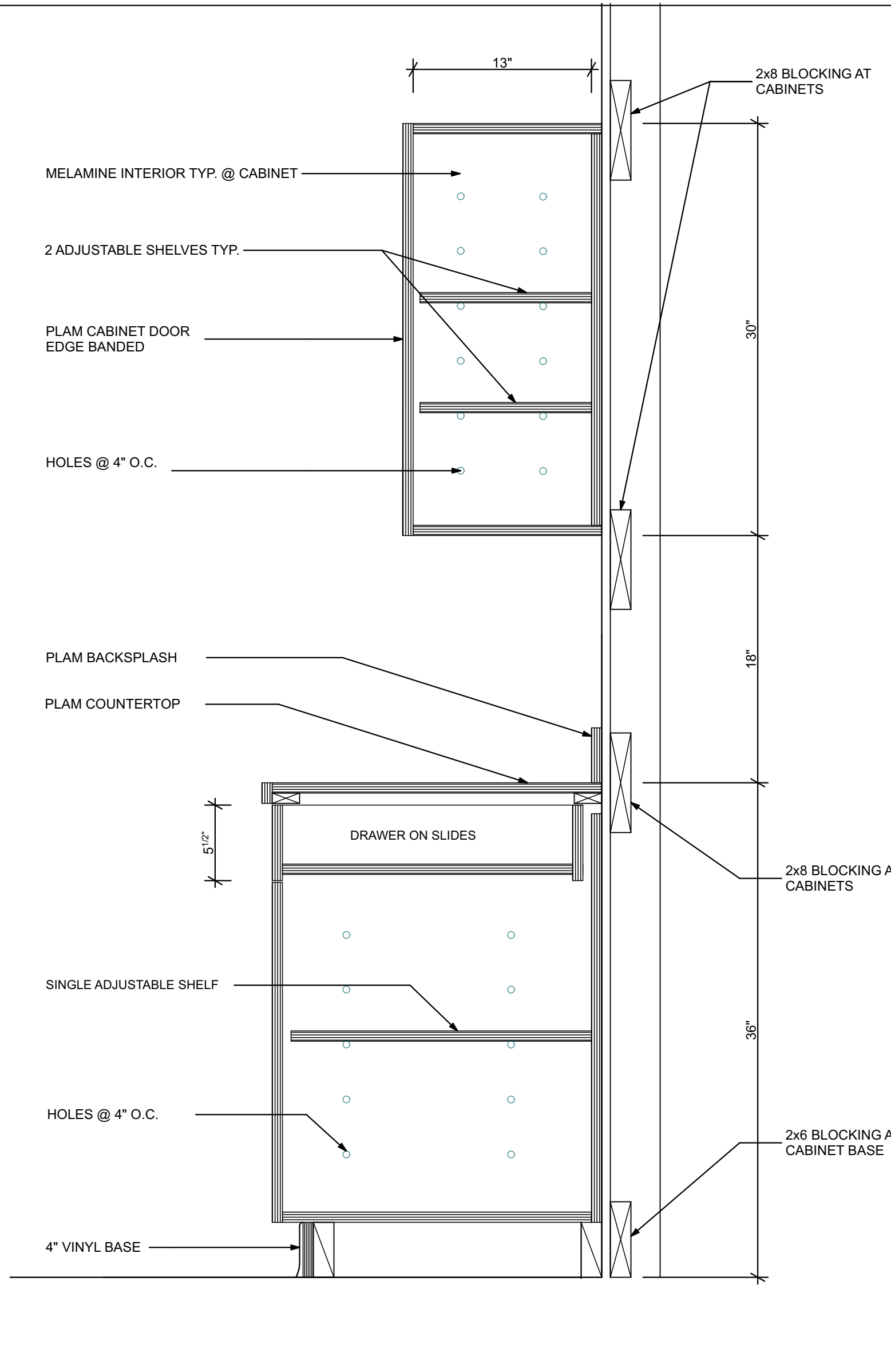


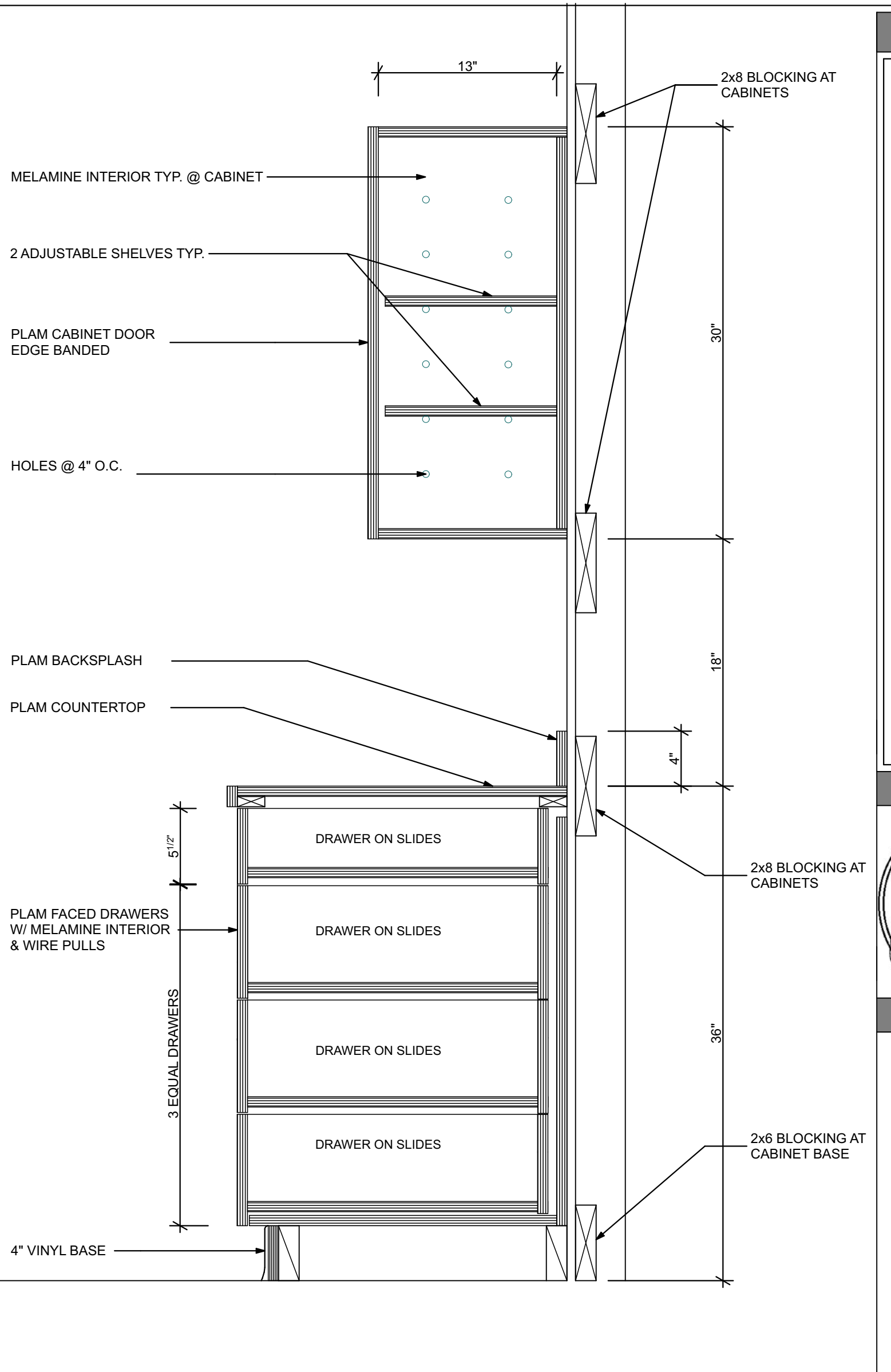
1
A3.1
CONFERENCE ROOM CABINET DETAIL
SCALE: 1 1/2" = 1'-0"



2
A3.1
SINK CABINET DETAIL
SCALE: 1 1/2" = 1'-0"

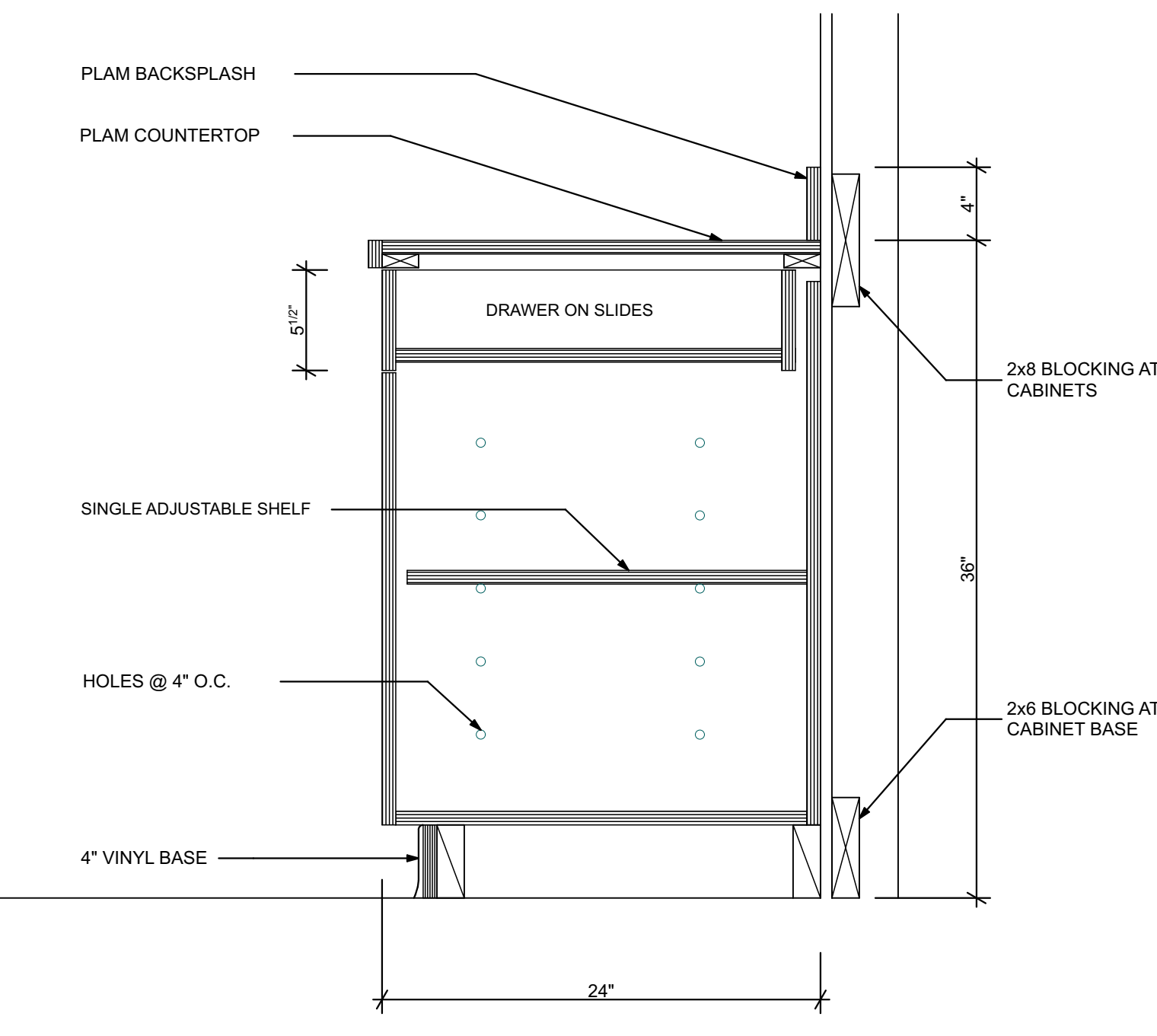


3
A3.1
CASEWORK DETAIL
SCALE: 1 1/2" = 1'-0"

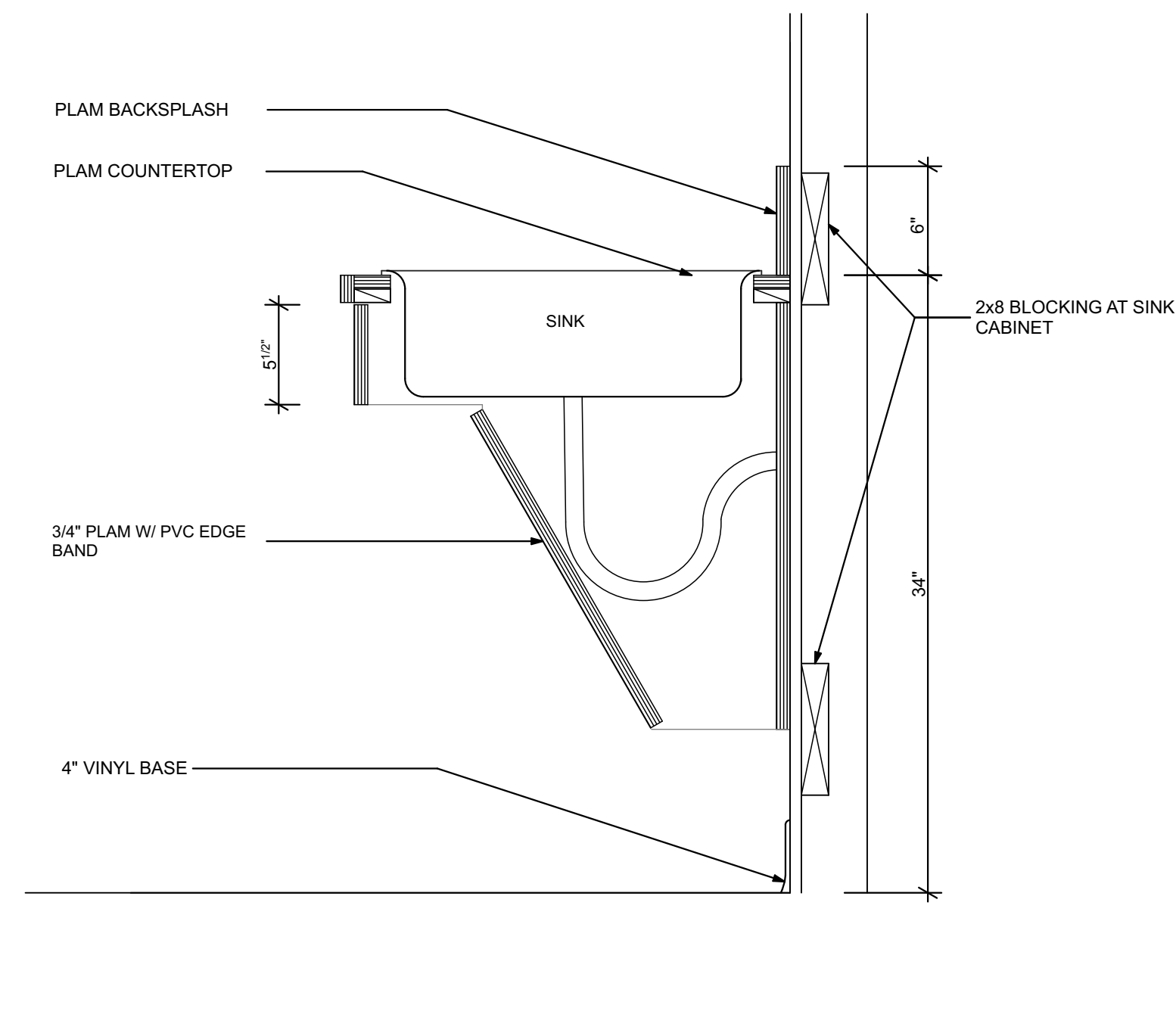


4
A3.1
DRAWER CAB DETAIL
SCALE: 1 1/2" = 1'-0"

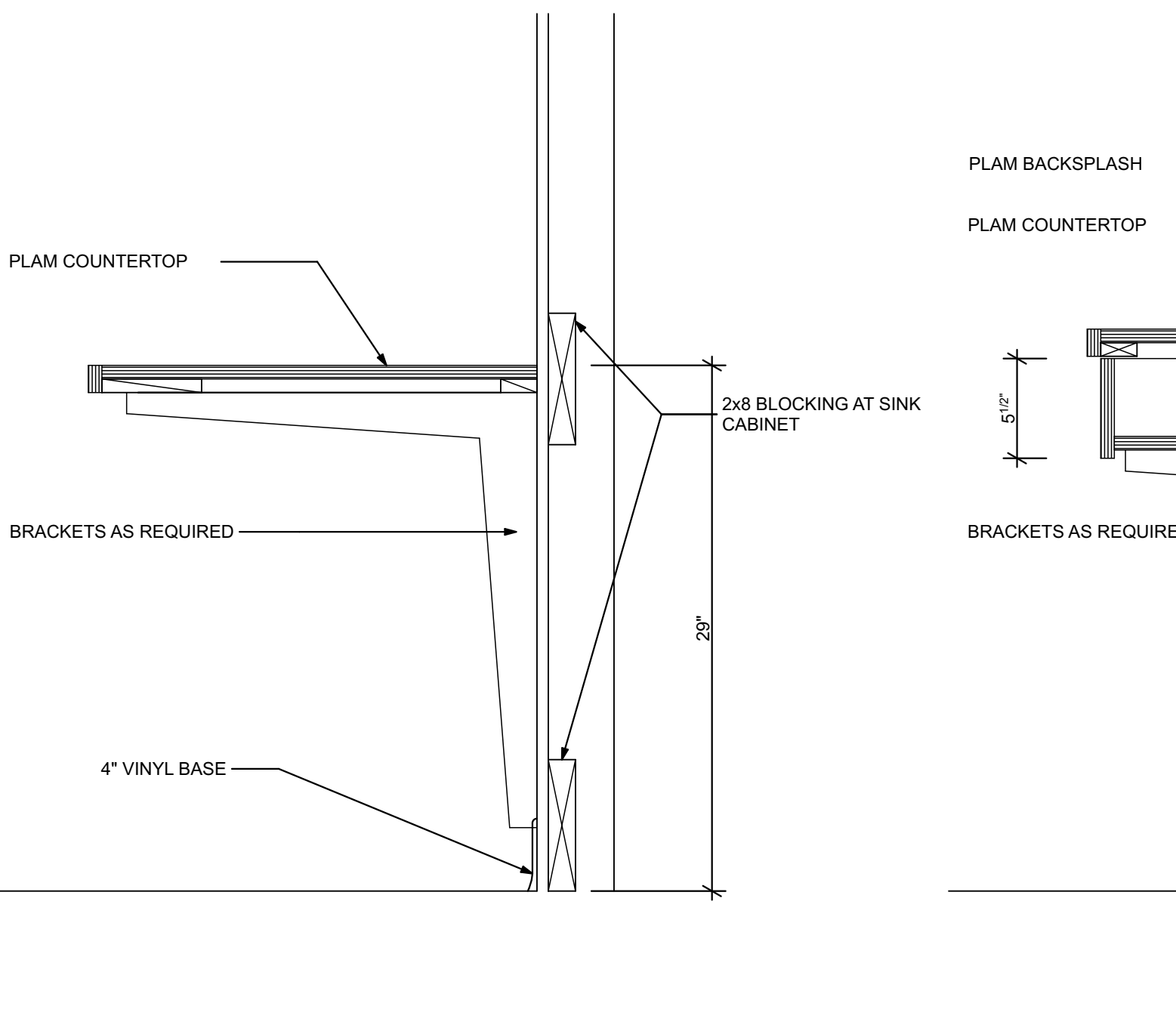
NOTE:
ALL FIRST FLOOR CABINETS ARE RELOCATED
ALL THIRD FLOOR CABINETS ARE NEW- SEE INTERIOR
ELEVATIONS.
SEE THESE DETAILS FOR BLOCKING LOCATIONS.



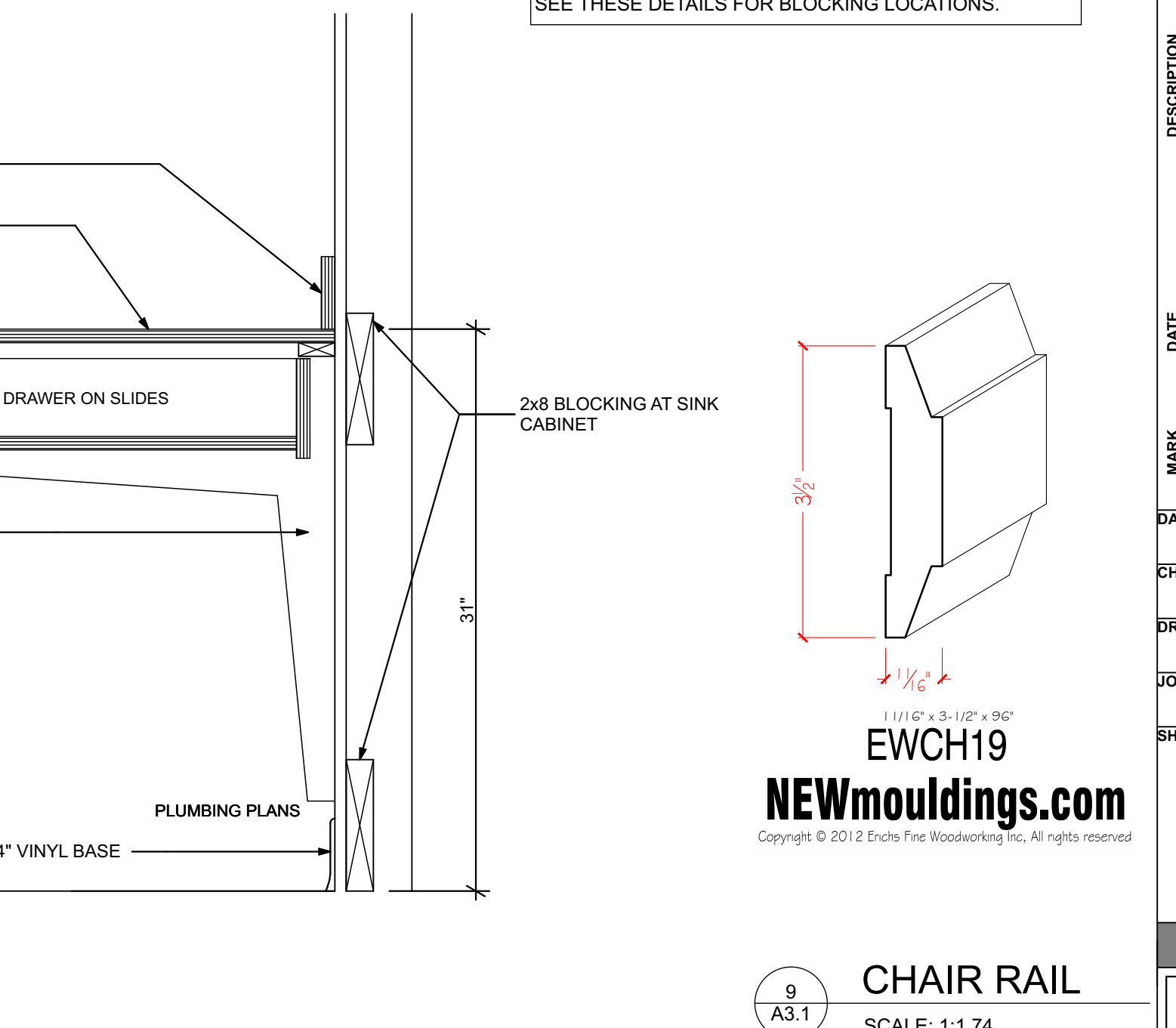
5
A3.1
BASE CABINET DETAIL
SCALE: 1 1/2" = 1'-0"



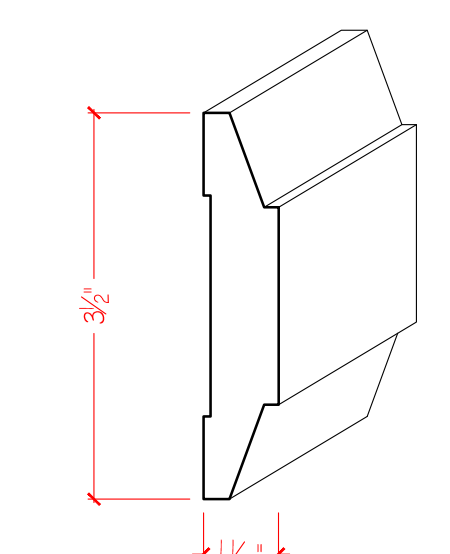
6
A3.1
HC SINK CABINET DETAIL
SCALE: 1 1/2" = 1'-0"



7
A3.1
COMPUTER WORK RM DETAIL
SCALE: 1 1/2" = 1'-0"



8
A3.1
TYP. EXAM ROOM DESK DETAIL
SCALE: 1 1/2" = 1'-0"



EWCH19
NEWmouldings.com
Copyright © 2012 Encho Fine Woodworking Inc. All rights reserved.

9
A3.1
CHAIR RAIL
SCALE: 1:1.74

ISSUED FOR PERMITTING DECEMBER 20, 2016
ISSUED FOR PRICING OCTOBER 5, 2016

THIS DRAWING IS AN INSTRUMENT OF SERVICE AND SHALL REMAIN THE PROPERTY OF WHIPPLE CALLENDER ARCHITECTS.
IT SHALL NOT BE USED FOR ANY OTHER PURPOSE THAT FOR WHICH IT IS SPECIFICALLY FURNISHED.

DERMATOLOGY ASSOCIATES
PORTLAND, MAINE
50 SEWALL ST

LICENSED ARCHITECT
ANNE E. CALLENDER
No. 1861
STATE OF MAINE

WHIPPLE CALLENDER ARCHITECTS

136 PLEASANT AVE.
PORTLAND, ME 04103
P 207.775.2696
F 207.775.3631
www.whipplecallender.com

DATE	DESCRIPTION
10/5/2016	ISSUED FOR PRICING
10/21/2016	ELECT/DATA/UPDATES TO PRICING SET
12/20/2016	UPDATES + PERMITTING

DATE: 12/20/16
CHECKED BY: AEC
DRAWN BY: CCL / NPC
JOB: 16-DAP
SHEET TITLE: CASEWORK DETAILS

A3.1