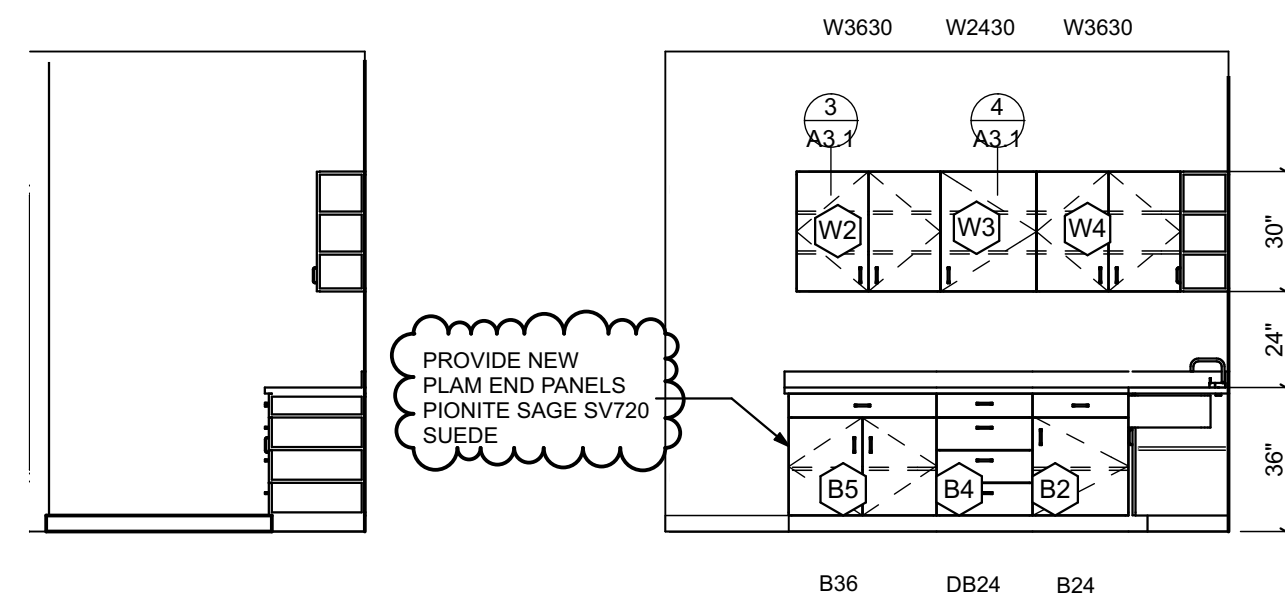


INSTALL SALVAGED CABINETS, SINK, & FAUCET FROM LUNCH ROOM ON THE THIRD FLOOR. PROVIDE NEW PLAM COUNTERTOP AND 4" BACKSPASH. SEE CABINET SYMBOL @ EXISTING LUNCH ROOM LAYOUT FOR LOCATION OF SALVAGED CABINETS IN NEW KITCHEN.



PROVIDE NEW PLAM END PANELS PIONITE SAGE SV720 SUEDE

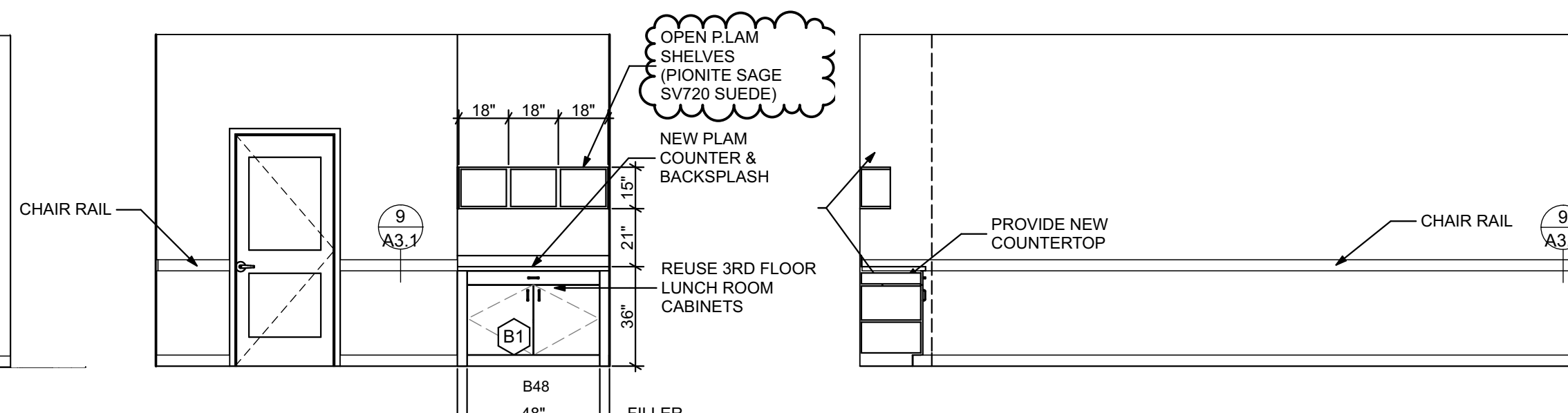
PROVIDE NEW PLAM END PANELS PIONITE SAGE SV720 SUEDE

REUSE EXIST. SINK & BUILD NEW SINK FRONT

1 A2.1 KITCHEN 117 FLOOR PLAN SCALE: 1/4" = 1'-0"

2 A2.1 KITCHEN 117 SCALE: 1/4" = 1'-0"

INSTALL SALVAGED CABINETS AND SINK WITH FAUCET FROM LUNCH ROOM ON THE THIRD FLOOR. PROVIDE NEW PLAM COUNTERTOP AND 4" BACKSPASH. SEE CABINET SYMBOL @ EXISTING LUNCH ROOM LAYOUT FOR LOCATION OF SALVAGED CABINETS IN NEW KITCHEN.

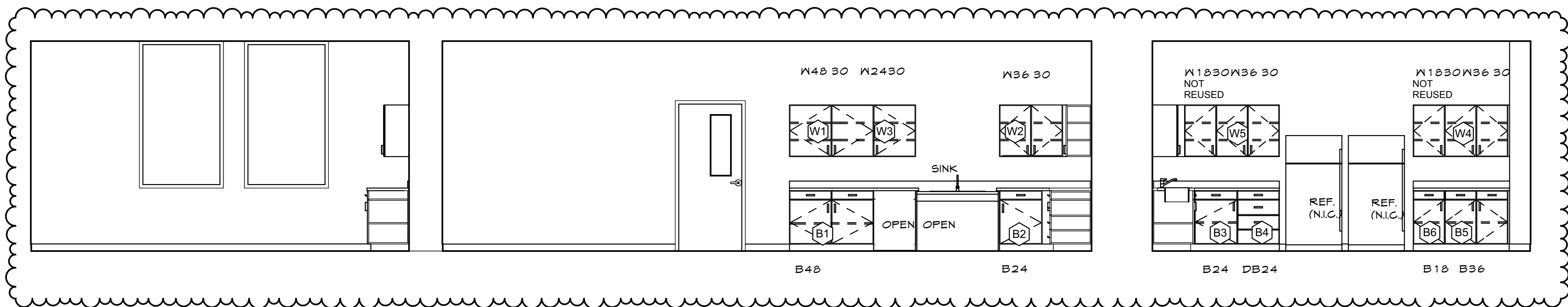


OPEN PLAM SHELVES PIONITE SAGE SV720 SUEDE

NEW PLAM COUNTER & BACKSPASH

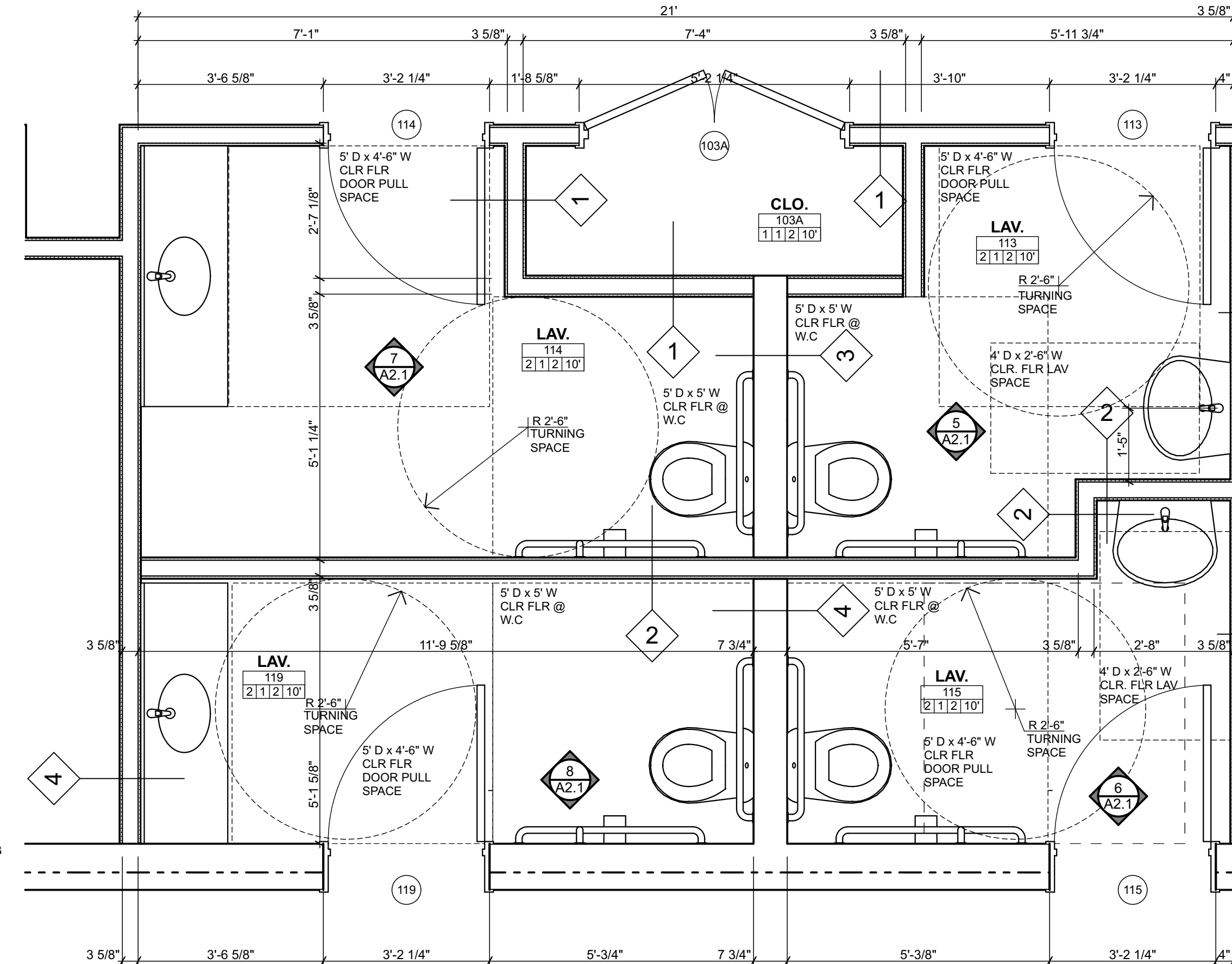
REUSE 3RD FLOOR LUNCH ROOM CABINETS

3 A2.1 CONFERENCE RM. 107 SCALE: 1/4" = 1'-0"

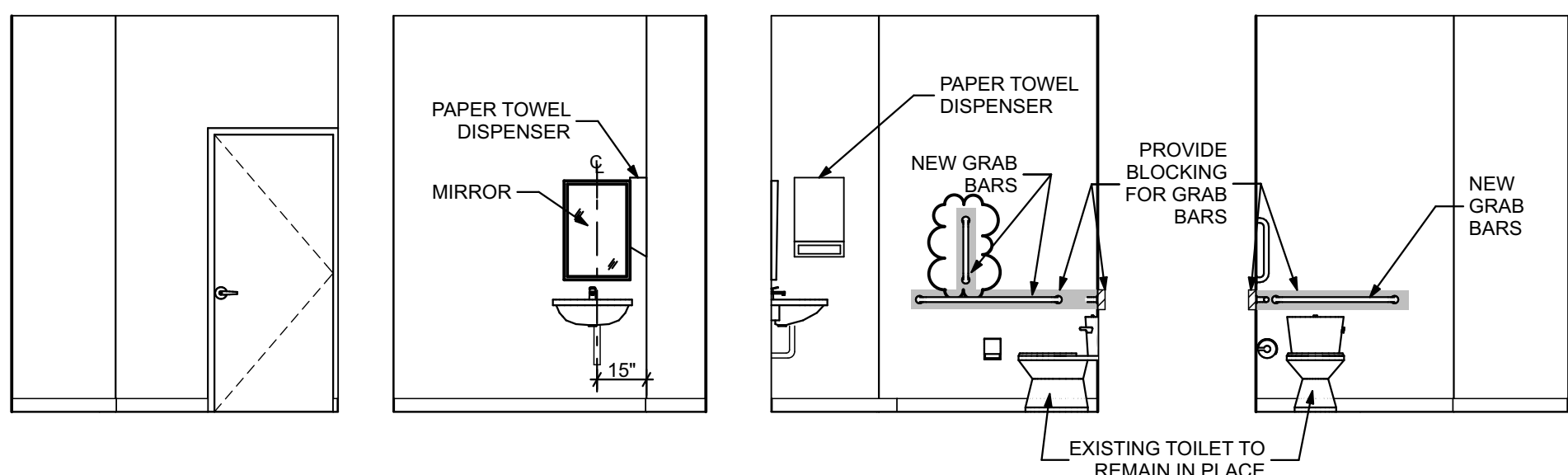


FOR REFERENCE ONLY - SEE CABINET SYMBOLS FOR NEW LOCATION AT KITCHEN 117 AND CONFERENCE RM 107

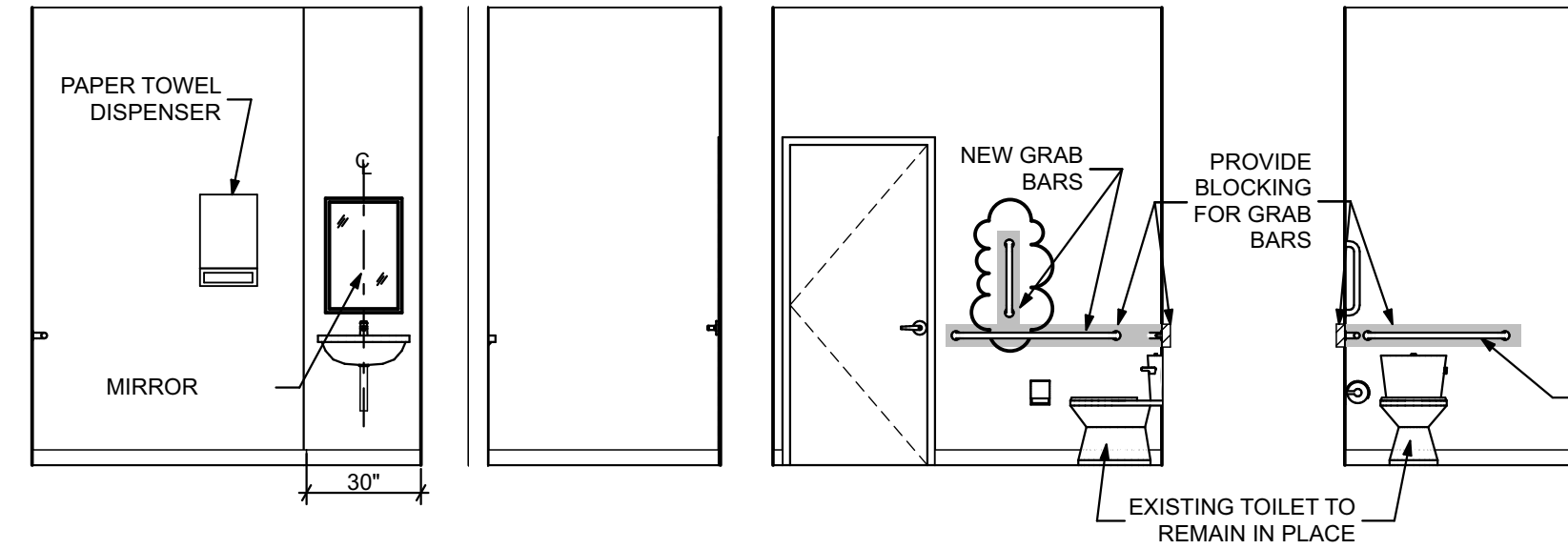
EX A2.1 SCALE: 1/4" = 1'-0"



4 A2.1 LAV 114, 113, 119 & 115 FLOOR PLAN SCALE: 1/2" = 1'-0"

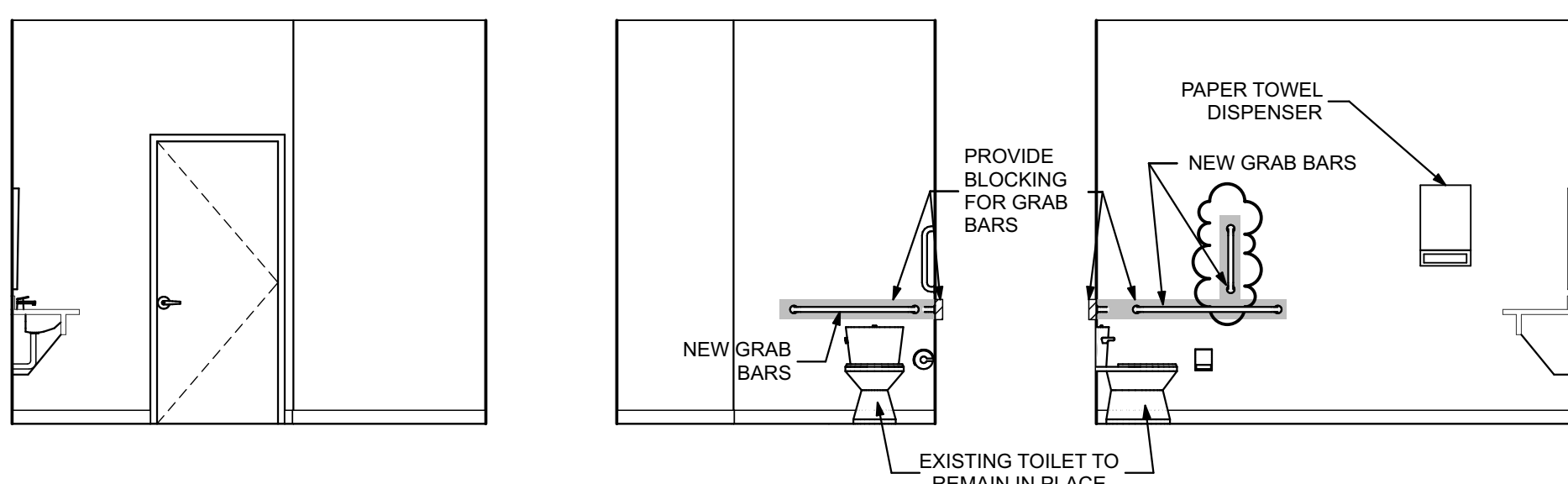


5 A2.1 INT. ELEV. LAV 113 SCALE: 1/4" = 1'-0"

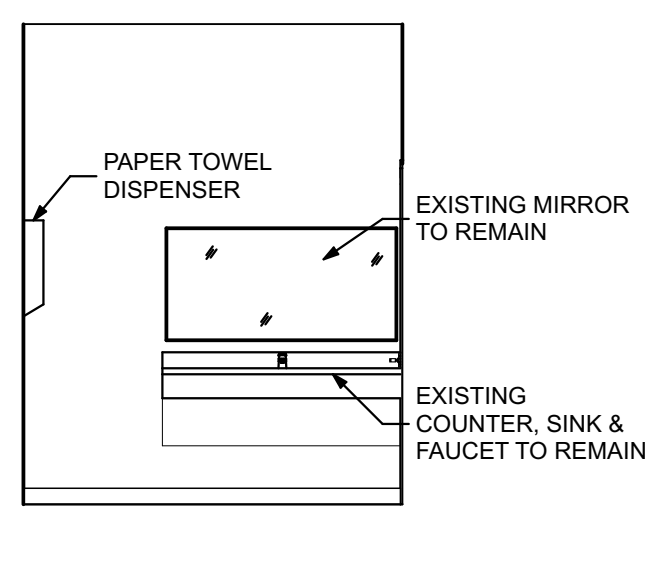


6 A2.1 INT. ELEV. LAV 115 SCALE: 1/4" = 1'-0"

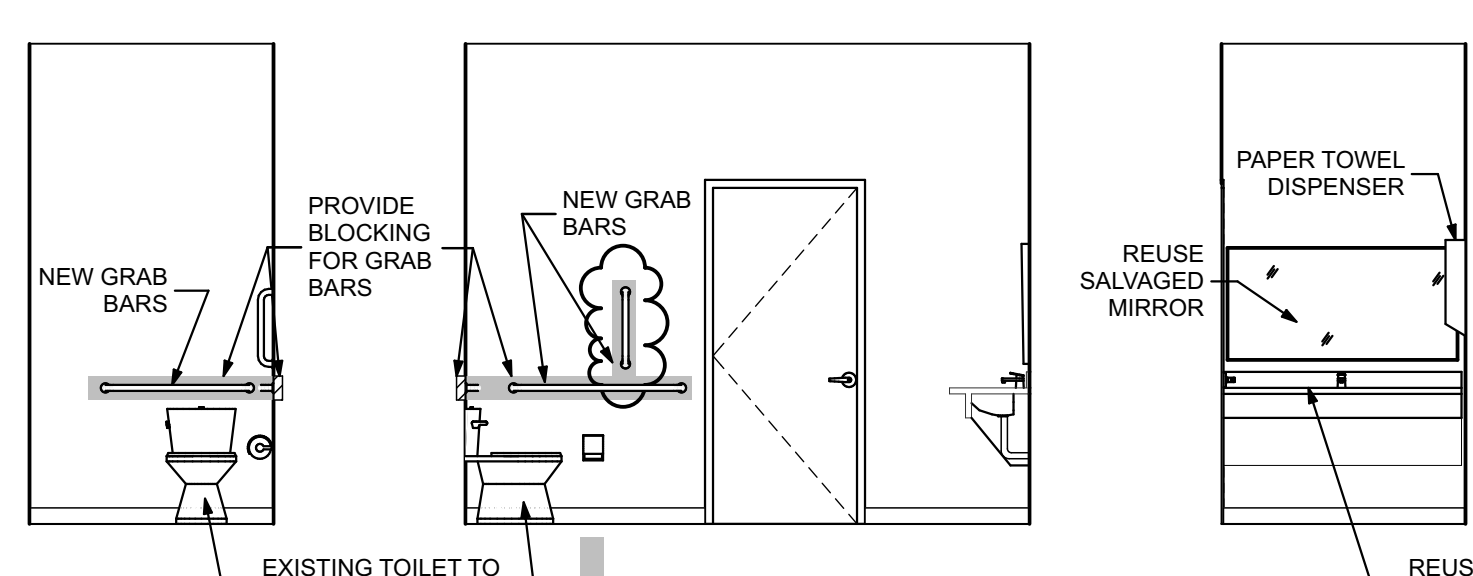
- GENERAL NOTES:
1. VERIFY ALL DIMENSIONS IN THE FIELD. REPORT ALL DISCREPANCIES TO ARCHITECT PRIOR TO COMMENCEMENT WITH WORK.
  2. NOTED DIMENSIONS TAKE PRECEDENT OVER SCALED DIMENSIONS. LARGE DETAILS TAKE PRECEDENT OVER SMALL SCALED DETAILS.
  3. ALL NEW CONSTRUCTION DIMENSIONS ARE ROUGH OPENINGS UNLESS NOTED OTHERWISE. DIMENSIONS TO EXISTING WALL CONSTRUCTION ARE TO FINISH SURFACE.
  4. PROVIDE SOLID BLOCKING FOR ALL CABINETS AND ACCESSORIES. REVIEW INTERIOR ELEVATIONS AND DETAILS FOR LOCATIONS.



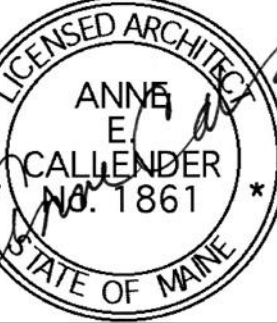
7 A2.1 INT. ELEV. LAV 114 SCALE: 1/4" = 1'-0"



8 A2.1 INT. ELEV. LAV 119 SCALE: 1/4" = 1'-0"



SEE DRAWING 12 / A2.1 FOR TYPICAL LOCATIONS AND DIMENSIONS OF PLUMBING & BATHROOM FIXTURES



WHIPPLE CALLENDER ARCHITECTS

136 PLEASANT AVE.  
PORTLAND, ME 04103  
P 207.775.2696  
F 207.775.3631  
www.whipplecallender.com

DATE	DESCRIPTION
10/5/2016	ISSUED FOR PRICING
10/21/2016	ELECT/DATA/UPDATES TO PRICING SET
12/20/2016	UPDATES + PERMITTING

DATE: 12/20/16  
CHECKED BY: AEC  
DRAWN BY: CCL / NPC  
JOB: 16-DAP  
SHEET TITLE: INTERIOR ELEVATIONS

A2.1

ISSUED FOR PERMITTING DECEMBER 20, 2016  
ISSUED FOR PRICING OCTOBER 5, 2016

THIS DRAWING IS AN INSTRUMENT OF SERVICE AND SHALL REMAIN THE PROPERTY OF WHIPPLE CALLENDER ARCHITECTS. IT SHALL NOT BE USED FOR ANY OTHER PURPOSE THAT FOR WHICH IT IS SPECIFICALLY FURNISHED.