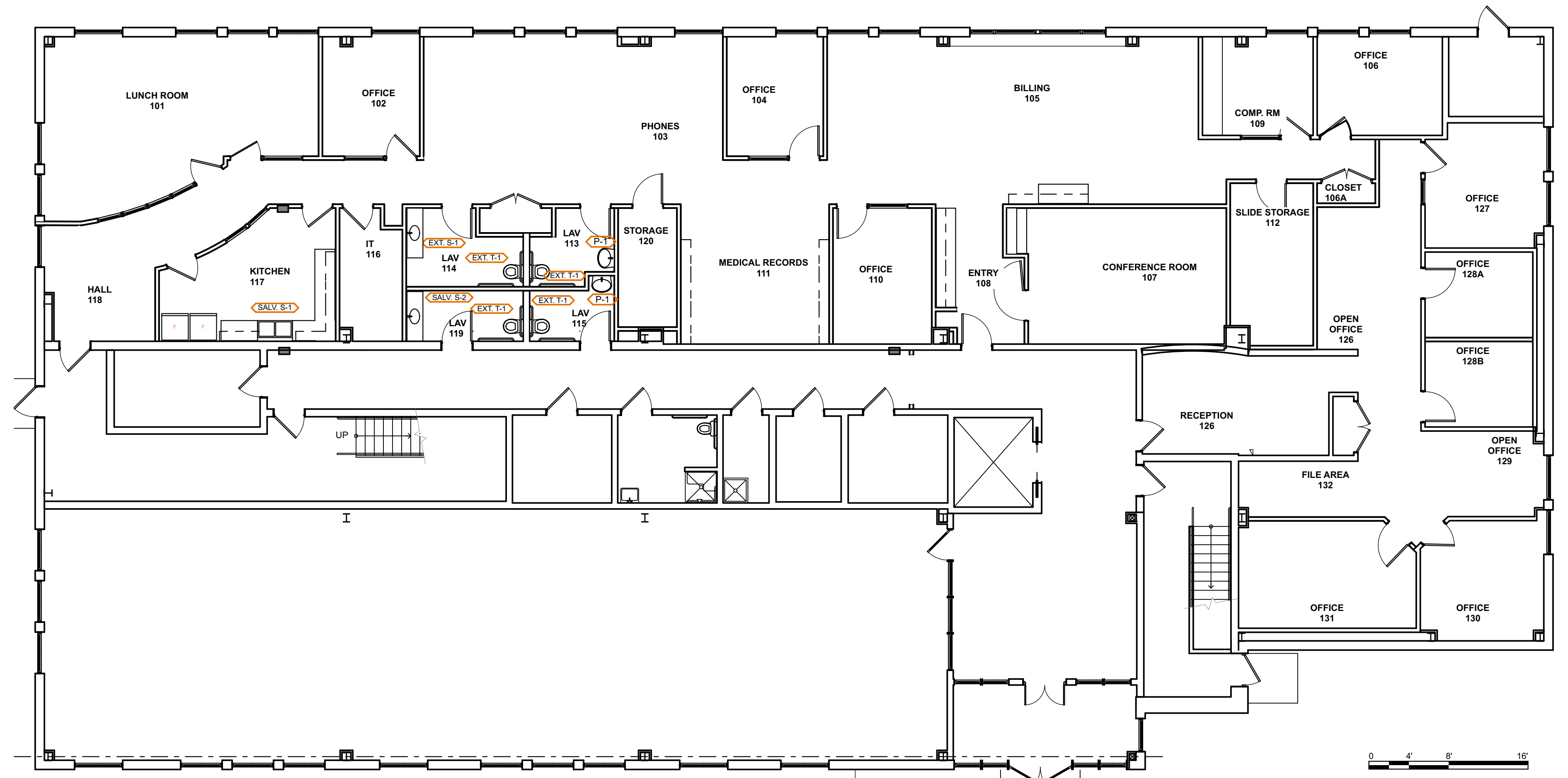
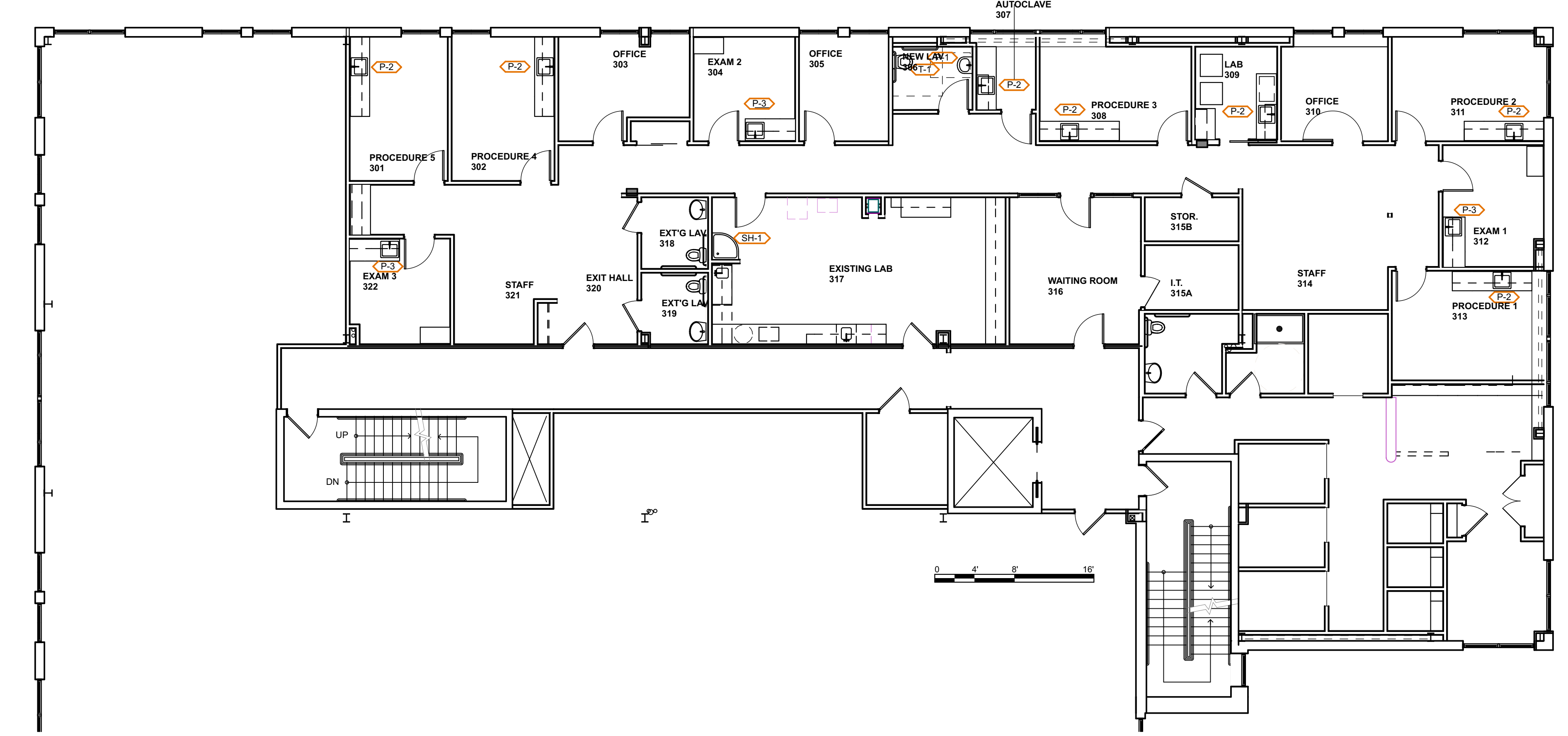


PLUMBING FIXTURE SCHEDULE

ID	ROOM NAME	ROOM #	SYMBOL	FIXTURE	QTY	MFR	PRODUCT NAME & NUMBER	NOTES
EXT. S-1	LAV.	114		EXISTING SINK & LAMINATE COUNTER TOP	1	N/A	N/A	TOILET TO REMAIN IN EXISTING LOCATION
EXT. T-1	LAV.	113		EXISTING TOILET	1	N/A	N/A	TOILET TO REMAIN IN EXISTING LOCATION
EXT. T-1	LAV.	114		EXISTING TOILET	1	N/A	N/A	TOILET TO REMAIN IN EXISTING LOCATION
EXT. T-1	LAV.	115		EXISTING TOILET	1	N/A	N/A	TOILET TO REMAIN IN EXISTING LOCATION
EXT. T-1	LAV.	119		EXISTING TOILET	1	N/A	N/A	TOILET TO REMAIN IN EXISTING LOCATION
P-1	LAV.	113		NEW WALL HUNG SINK & FAUCET	1	AMERICAN STANDARD	LUCERNE 0356.041 WITH MOEN 8416 FAUCET AND TRUBRO 103-EZ PIPE COVERS	WHITE WALL HUNG SINK WITH CONCEALED ARMS AND SINGLE LEVER FAUCET
P-1	LAV.	115		NEW WALL HUNG SINK & FAUCET	1	AMERICAN STANDARD	LUCERNE 0356.041 WITH MOEN 8416 FAUCET AND TRUBRO 103-EZ PIPE COVERS	WHITE WALL HUNG SINK WITH CONCEALED ARMS AND SINGLE LEVER FAUCET
P-1	NEW LAV	306		NEW WALL HUNG SINK & FAUCET	1	AMERICAN STANDARD	LUCERNE 0356.041 WITH MOEN 8416 FAUCET AND TRUBRO 103-EZ PIPE COVERS	WHITE WALL HUNG SINK WITH CONCEALED ARMS AND SINGLE LEVER FAUCET
P-2	AUTOCLAVE	307		NEW STAINLESS STEEL SINK & FAUCET	1	DAYTON	DPC12522 STAINLESS STEEL WITH 2 HOLES ANA MOEN FAUCET 8279SMF15	25" X 22" SINK WITH 2 HANDLE BAR FAUCET
P-2	LAB	309		NEW STAINLESS STEEL SINK & FAUCET	1	DAYTON	DPC12522 STAINLESS STEEL WITH 2 HOLES ANA MOEN FAUCET 8279SMF15	25" X 22" SINK WITH 2 HANDLE BAR FAUCET
P-2	PROCEDURE 1	313		NEW STAINLESS STEEL SINK & FAUCET	1	DAYTON	DPC12522 STAINLESS STEEL WITH 2 HOLES ANA MOEN FAUCET 8279SMF15	25" X 22" SINK WITH 2 HANDLE BAR FAUCET
P-2	PROCEDURE 2	311		NEW STAINLESS STEEL SINK & FAUCET	1	DAYTON	DPC12522 STAINLESS STEEL WITH 2 HOLES ANA MOEN FAUCET 8279SMF15	25" X 22" SINK WITH 2 HANDLE BAR FAUCET
P-2	PROCEDURE 3	308		NEW STAINLESS STEEL SINK & FAUCET	1	DAYTON	DPC12522 STAINLESS STEEL WITH 2 HOLES ANA MOEN FAUCET 8279SMF15	25" X 22" SINK WITH 2 HANDLE BAR FAUCET
P-2	PROCEDURE 4	302		NEW STAINLESS STEEL SINK & FAUCET	1	DAYTON	DPC12522 STAINLESS STEEL WITH 2 HOLES ANA MOEN FAUCET 8279SMF15	25" X 22" SINK WITH 2 HANDLE BAR FAUCET
P-2	PROCEDURE 5	301		NEW STAINLESS STEEL SINK & FAUCET	1	DAYTON	DPC12522 STAINLESS STEEL WITH 2 HOLES ANA MOEN FAUCET 8279SMF15	25" X 22" SINK WITH 2 HANDLE BAR FAUCET
P-3	EXAM 1	312		NEW STAINLESS STEEL SINK & FAUCET	1	DAYTON	D-11721 WITH MOEN FAUCET 8279SMF15	17" X 19" SINK WITH 2 HANDLE BAR FAUCET
P-3	EXAM 2	304		NEW STAINLESS STEEL SINK & FAUCET	1	DAYTON	D-11721 WITH MOEN FAUCET 8279SMF15	17" X 19" SINK WITH 2 HANDLE BAR FAUCET
P-3	EXAM 3	322		NEW STAINLESS STEEL SINK & FAUCET	1	DAYTON	D-11721 WITH MOEN FAUCET 8279SMF15	17" X 19" SINK WITH 2 HANDLE BAR FAUCET
SALV. S-1	KITCHEN	117		EXISTING LUNCH ROOM SINK FROM THIRD FLOOR	1	N/A	N/A	SALVAGE AND RE-INSTALL
SALV. S-2	LAV.	119		EXISTING SINK, FAUCET & LAMINATE COUNTER TOP	1	N/A	N/A	SALVAGE AND RE-INSTALL
SH-1	EXISTING LAB	317		NEW SHOWER WITH EMERGENCY DELUGE SHOWER HEAD	1	OVE DECOR	B14-31-GP-SB BREEZE 31 SHOWER WITH GUARDIAN G1950P-TMV G3800LF SAFETY STATION WITH EYE WASH BOWL AND THERMOSTATIC MIXING VALVE	PREMIUM KIT W/ ACRYLIC BASE & EMERGENCY DELUGE SHOWER HEAD, MIXING VALVE FOR EMERGENCY FIXTURES. DRAIN TO HAVE SELF-PRIMING TRAP.
T-1	NEW LAV	306		NEW TOILET	1	AMERICAN STANDARD	CADET PRO RIGHT HEIGHT ELONGATED BOWL 215AA-004 WHITE WITH CHURCH OPEN FRONT SEAT 295CT	ADA HEIGHT ELONGATED TOILET AND SEAT



1st FLOOR PLUMBING PLAN
SCALE: 1/8" = 1'-0"



3rd FLOOR PLUMBING PLAN
SCALE: 1/8" = 1'-0"

DERMATOLOGY ASSOCIATES
PORTLAND, MAINE
50 SEWALL ST

WHIPPLE CALLENDER ARCHITECTS

136 PLEASANT AVE.
PORTLAND, ME 04103
P 207.775.2696
F 207.775.3631
www.whipplecallender.com

DATE	DESCRIPTION
10/5/2016	ISSUED FOR PRICING
10/21/2016	ELECT/DATA/UPDATES TO PRICING SET
12/20/2016	UPDATES + PERMITTING

DATE: 12/20/16
CHECKED BY: AEC
DRAWN BY: CCL / NPC
JOB: 16-DAP
SHEET TITLE: PLUMBING PLANS

A1.7

ISSUED FOR PERMITTING DECEMBER 20, 2016
ISSUED FOR PRICING OCTOBER 5, 2016

THIS DRAWING IS AN INSTRUMENT OF SERVICE AND SHALL REMAIN THE PROPERTY OF WHIPPLE CALLENDER ARCHITECTS. IT SHALL NOT BE USED FOR ANY OTHER PURPOSE THAN FOR WHICH IT IS SPECIFICALLY FURNISHED.