

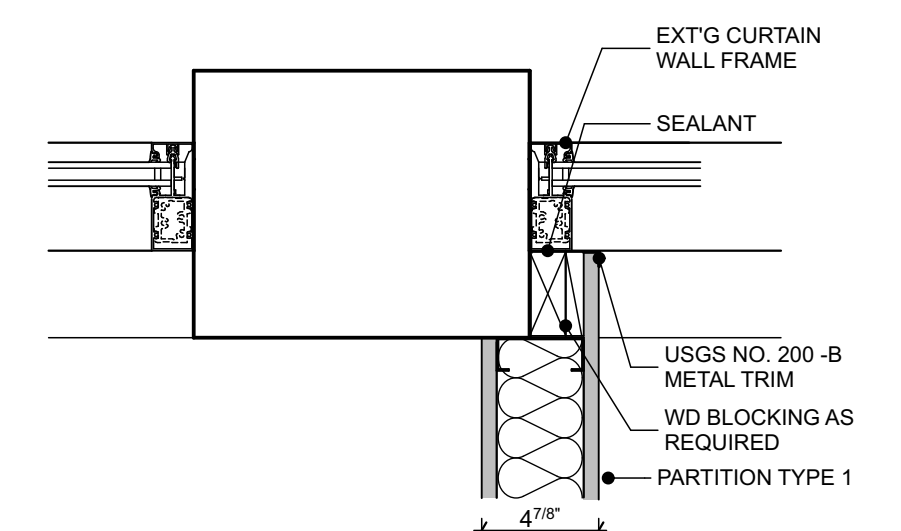
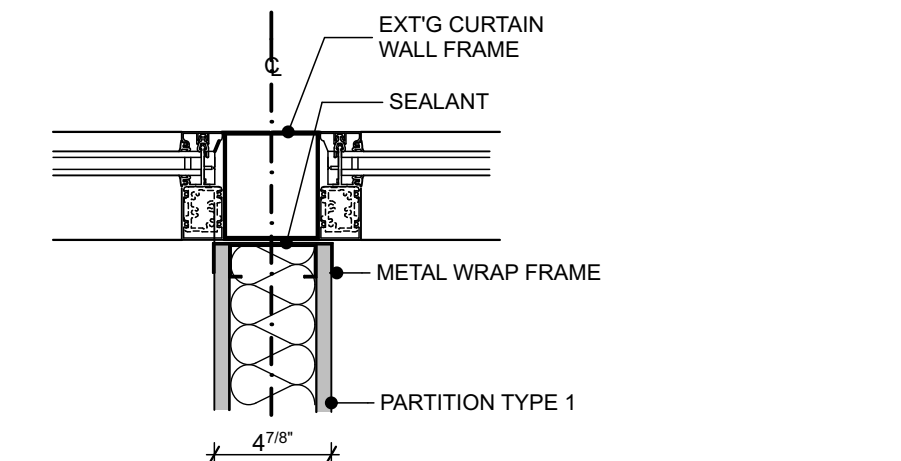
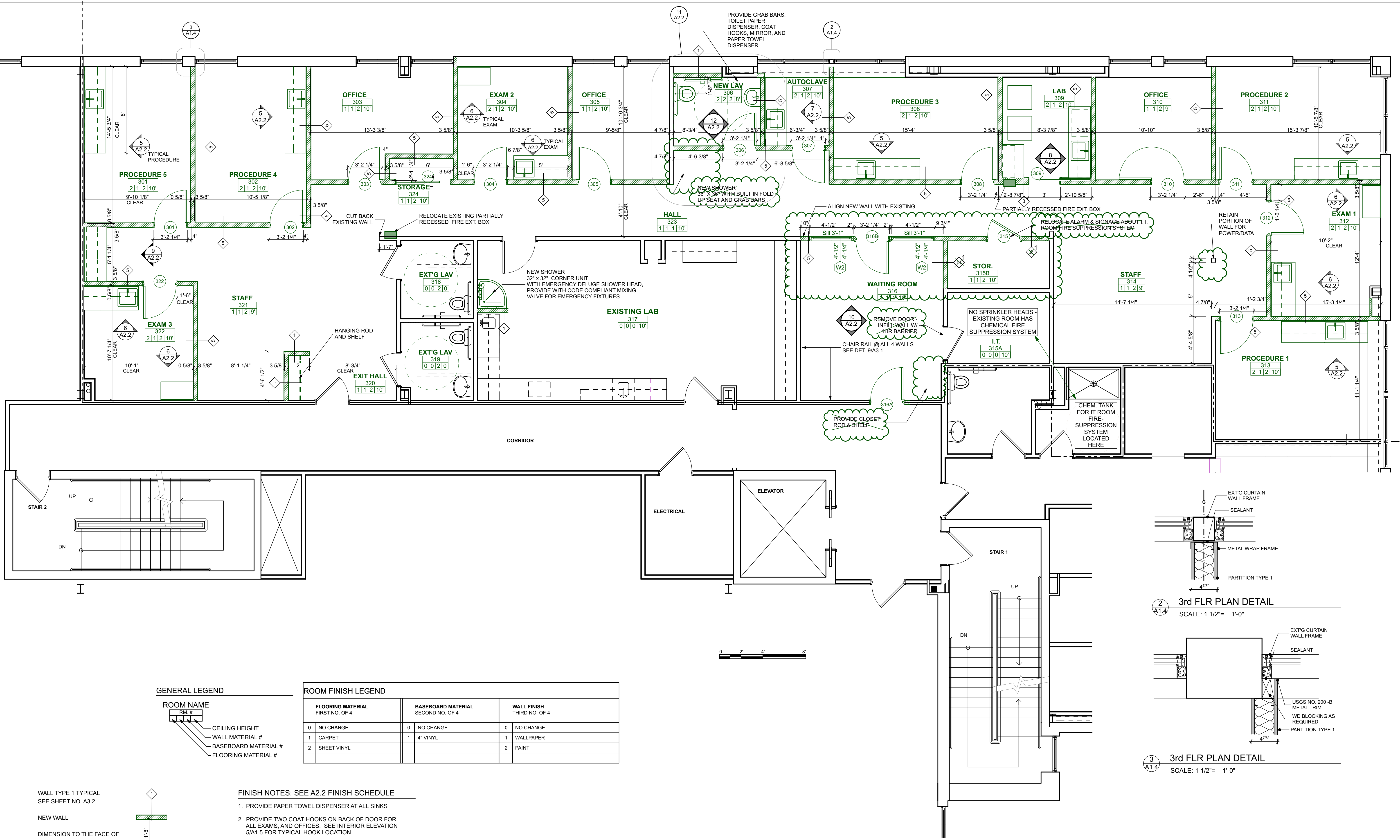
WHIPPLE  
 CALLENDER  
 ARCHITECTS

136 PLEASANT AVE.  
 PORTLAND, ME 04103  
 P 207.775.3696  
 F 207.775.3631  
 www.whipplecallender.com

DATE	DESCRIPTION
10/5/2016	ISSUED FOR PRICING
10/21/2016	ELECT/DATA/UPDATES TO PRICING SET
12/20/2016	UPDATES + PERMITTING

DATE: 12/20/16  
 CHECKED BY: AEC  
 DRAWN BY: CCL / NPC  
 JOB: 16-DAP  
 SHEET TITLE: THIRD FLOOR PLAN

A1.4



1  
 A1.4 PARTIAL THIRD FLOOR PLAN  
 SCALE: 1/4" = 1'-0"

**GENERAL LEGEND**

ROOM NAME	RM. #
CEILING HEIGHT	
WALL MATERIAL #	
BASEBOARD MATERIAL #	
FLOORING MATERIAL #	

**ROOM FINISH LEGEND**

FLOORING MATERIAL FIRST NO. OF 4	BASEBOARD MATERIAL SECOND NO. OF 4	WALL FINISH THIRD NO. OF 4
0 NO CHANGE	0 NO CHANGE	0 NO CHANGE
1 CARPET	1 4" VINYL	1 WALLPAPER
2 SHEET VINYL		2 PAINT

- FINISH NOTES: SEE A2.2 FINISH SCHEDULE**
1. PROVIDE PAPER TOWEL DISPENSER AT ALL SINKS
  2. PROVIDE TWO COAT HOOKS ON BACK OF DOOR FOR ALL EXAMS, AND OFFICES. SEE INTERIOR ELEVATION 5/A1.5 FOR TYPICAL HOOK LOCATION.
  3. SEE A2.2 FOR FINISH SCHEDULE.
  4. WALL PAINT TO BE EGGSHELL.
  5. DOOR FRAME PAINT TO BE SATIN GLOSS
  6. ALL NEW DOORS TO BE SOLID CORE BIRCH.
  7. HANG TENANT SUPPLIED GLOVE BOX & SHARPS CONTAINER.
  8. PROVIDE ADA TACTILE SIGNAGE AT BATHROOMS.

- WALL TYPE 1 TYPICAL SEE SHEET NO. A3.2
- NEW WALL
- DIMENSION TO THE FACE OF STUD UNLESS OTHERWISE NOTED
- EXISTING WALL TO REMAIN
- EXISTING CONSTRUCTION TO BE REMOVED
- DOOR & FRAME SCHEDULE SEE SHEET A4.1
- INTERIOR ELEVATIONS # PAGE