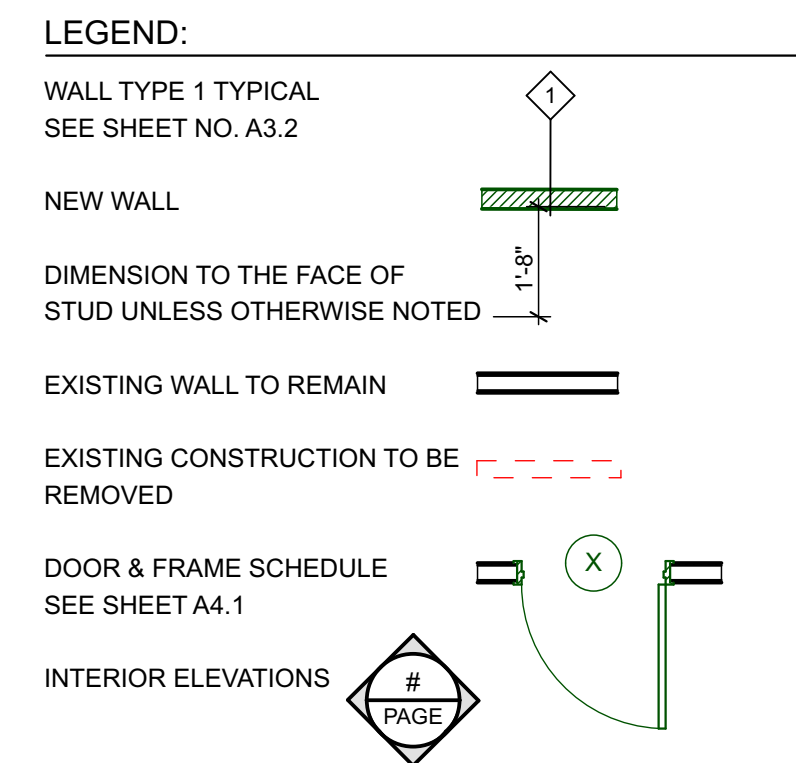
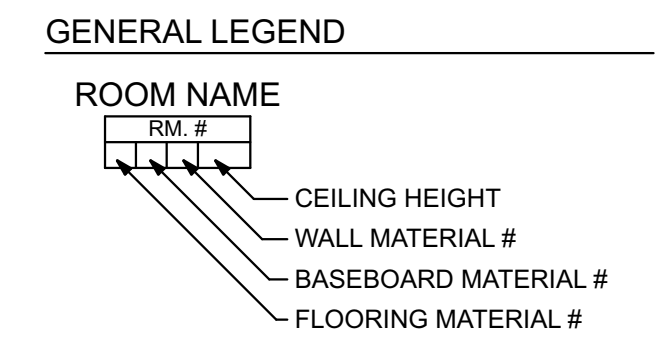


1 1st FLOOR PLAN - BUSINESS OFFICE  
SCALE: 3/16" = 1'-0"



- FINISH NOTES: SEE A2.2 FINISH SCHEDULE**
- PROVIDE PAPER TOWEL DISPENSER AT ALL SINKS
  - PROVIDE TWO COAT HOOKS ON BACK OF DOOR FOR ALL EXAMS, AND OFFICES. SEE INTERIOR ELEVATION 5/A1.5 FOR TYPICAL HOOK LOCATION.
  - SEE A2.2 FOR FINISH SCHEDULE.
  - WALL PAINT TO BE EGGSHELL.
  - DOOR FRAME PAINT TO BE SATIN GLOSS
  - ALL NEW DOORS TO BE SOLID CORE BIRCH.
  - HANG TENANT SUPPLIED GLOVE BOX & SHARPS CONTAINER.
  - PROVIDE ADA TACTILE SIGNAGE AT BATHROOMS.



**ROOM FINISH LEGEND**

| FLOORING MATERIAL FIRST NO. OF 4 | BASEBOARD MATERIAL SECOND NO. OF 4 | WALL FINISH THIRD NO. OF 4 |
|----------------------------------|------------------------------------|----------------------------|
| 0 NO CHANGE                      | 0 NO CHANGE                        | 0 NO CHANGE                |
| 1 CARPET                         | 1 4" VINYL                         | 1 WALLPAPER                |
| 2 SHEET VINYL                    |                                    | 2 PAINT                    |

ISSUED FOR PERMITTING DECEMBER 20, 2016  
ISSUED FOR PRICING OCTOBER 5, 2016

THIS DRAWING IS AN INSTRUMENT OF SERVICE AND SHALL REMAIN THE PROPERTY OF WHIPPLE CALLENDER ARCHITECTS. IT SHALL NOT BE USED FOR ANY OTHER PURPOSE THAT FOR WHICH IT IS SPECIFICALLY FURNISHED.

**DERMATOLOGY ASSOCIATES**  
PORTLAND, MAINE  
50 SEWALL ST

LICENSED ARCHITECT  
ANNE E. CALLENDER  
No. 1861  
STATE OF MAINE

**WHIPPLE CALLENDER ARCHITECTS**

136 PLEASANT AVE.  
PORTLAND, ME 04103  
P 207.775.2696  
F 207.775.3631  
www.whipplecallender.com

| DATE       | DESCRIPTION                       |
|------------|-----------------------------------|
| 10/5/2016  | ISSUED FOR PRICING                |
| 10/21/2016 | ELECT/DATA/UPDATES TO PRICING SET |
| 12/20/2016 | UPDATES + PERMITTING              |

DATE: 12/20/16  
CHECKED BY: AEC  
DRAWN BY: CCL / NPC  
JOB: 16-DAP  
SHEET TITLE: FIRST FLOOR PLAN

**A1.1**