

**Neokraft**  
SIGN S

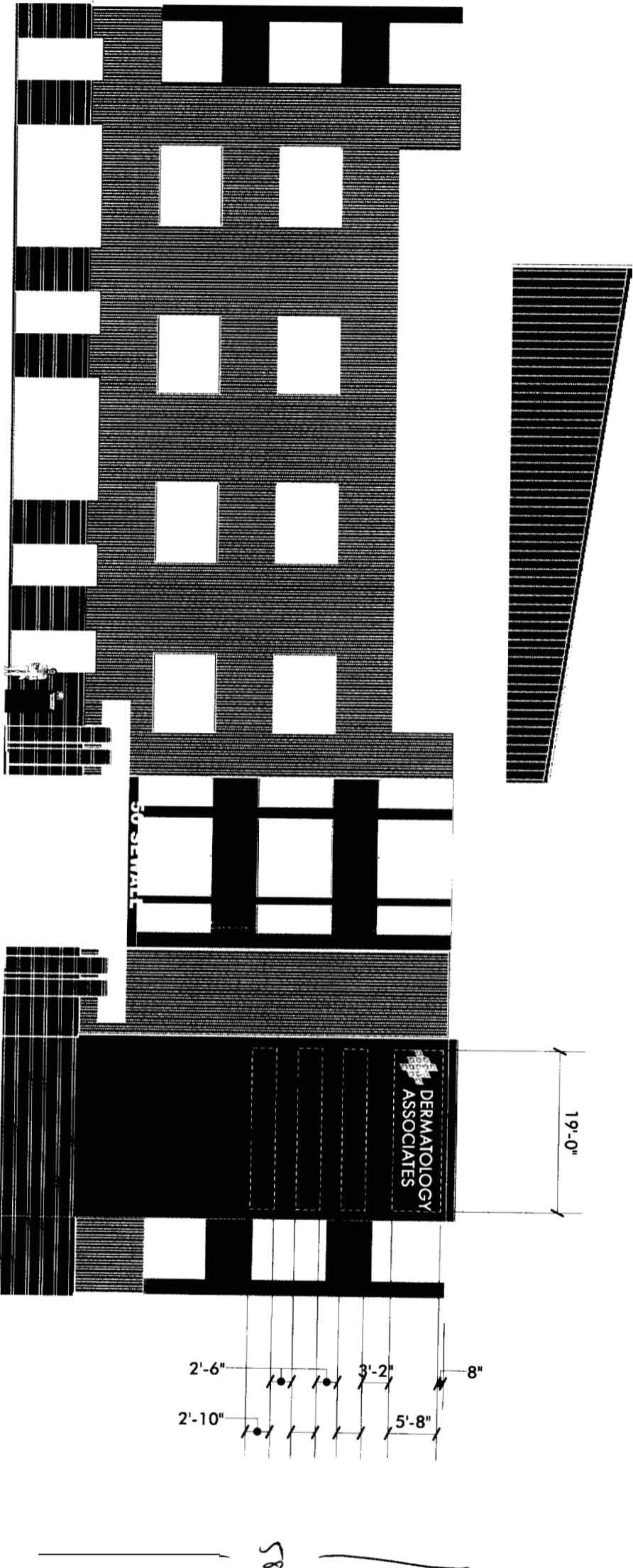
Neokraft Signs Inc.  
686 Main Street  
Lewiston, Maine 04240  
Telephone: 207.782.9654  
Facsimile: 207.782.0009  
1.800.339.2258  
<http://www.neokraft.com>  
Custom Sign Fabrication

Except for designs supplied by the client, all ideas, plans or arrangements indicated on this drawing are copyrighted and owned by Neokraft Signs Inc. and shall not be reproduced, used by or disclosed to any person, firm or corporation without written permission of Neokraft Signs Inc.

**Dermatology Associates 05756**

**PERMIT DRAWING**

Location:	50 Sewall St. Portland, ME
Drawing No.:	1 of 2
Drawn by:	DS
Date:	07.12.2006
Gen Ref.:	



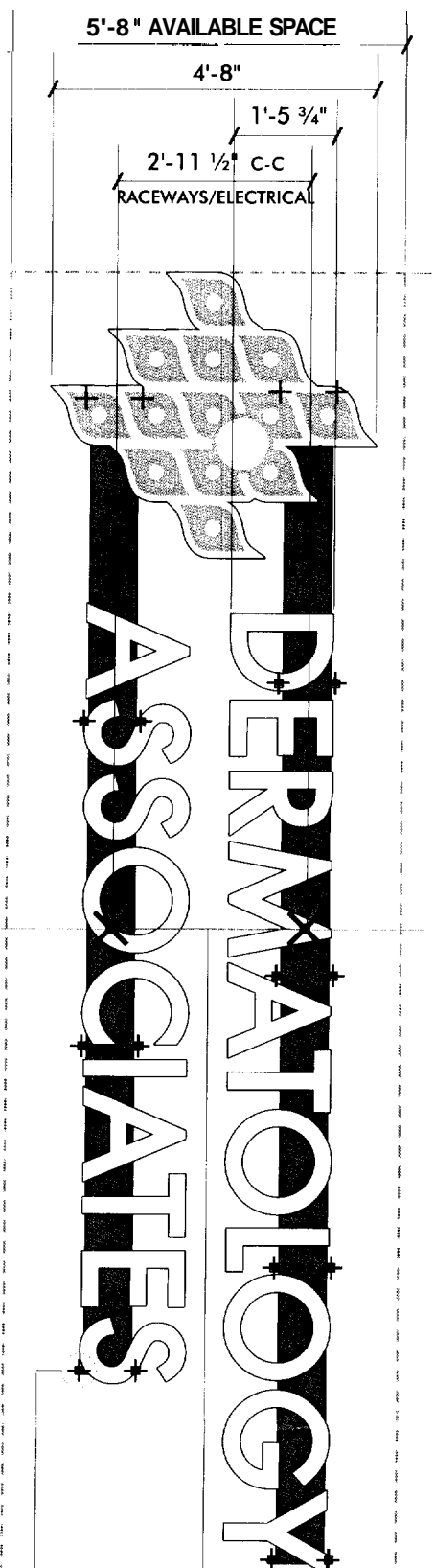
APPROXIMATE OVERALL FACADE AREA = 9400 S.F.  
 OVERALL SIGN AREA PERMITTED BY CODE = 5% OF PRINCIPLE FACADE = 470 S.F.  
 PROPOSED SIGN AREA = 269.2 S.F.  
 40% OF SIGN AREA ALLOCATED TO TENANT NO. 1 = 107.7 S.F.  
 60% OF SIGN AREA ALLOCATED TO TENANTS 2, 3 & 4 = 161.5 S.F.

**NORTH ELEVATION**

**SCALE: 1/16"=1'-0"**

153'  
58'

19'-0" AVAILABLE SPACE



INTERNALLY ILLUMINATED WALL LETTERS ON RACEWAYS

SCALE: 3/8" = 1'-0" (1) SET

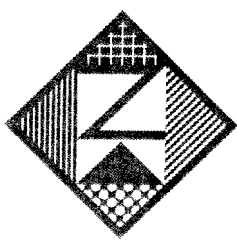
19 X 4 1/8"  
 328" x 56" = 18,728 sq ft  
 = 88,674 sq ft

INTERNALLY ILLUMINATED FABRICATED ALUMINUM LETTERS: WHITE TRANSLUCENT SG ACRYLIC FACES, 2-LAYER DURACHROME-PRINTED LOGO GRAPHICS, SILVER METALLIC TRIM & RETURNS

277V ELECTRICAL LOCATIONS BY OWNER

FABRICATED ALUMINUM RACEWAYS, PAINT TO MATCH WALL COLOR (TBD), STRAP MOUNTING TO BRICK WALL

1) LOK-BOLT MOUNTING LOCATIONS (SEE DETAIL)



**Neokraft**  
S I G N S

Neokraft Signs Inc.  
 686 Main Street  
 Lewiston, Maine 04240  
 Telephone: 207.782.9654  
 Facsimile: 207.782.0009  
 1.800.339.2258  
<http://www.neokraft.com>

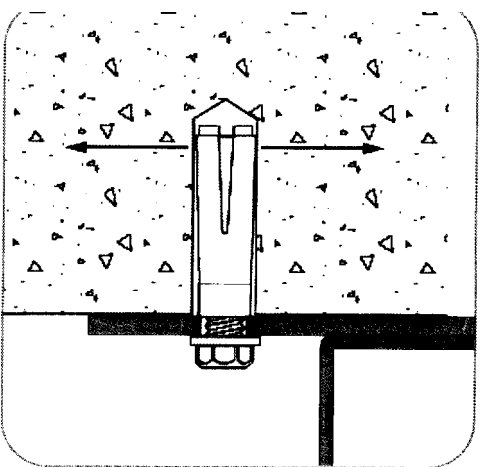
Custom Sign Fabrication

Except for designs supplied by the client, all ideas, plans or arrangements indicated on this drawing are copyrighted and owned by Neokraft Signs Inc. and shall not be reproduced, used by or disclosed to any person, firm or corporation without written permission of Neokraft Signs Inc.

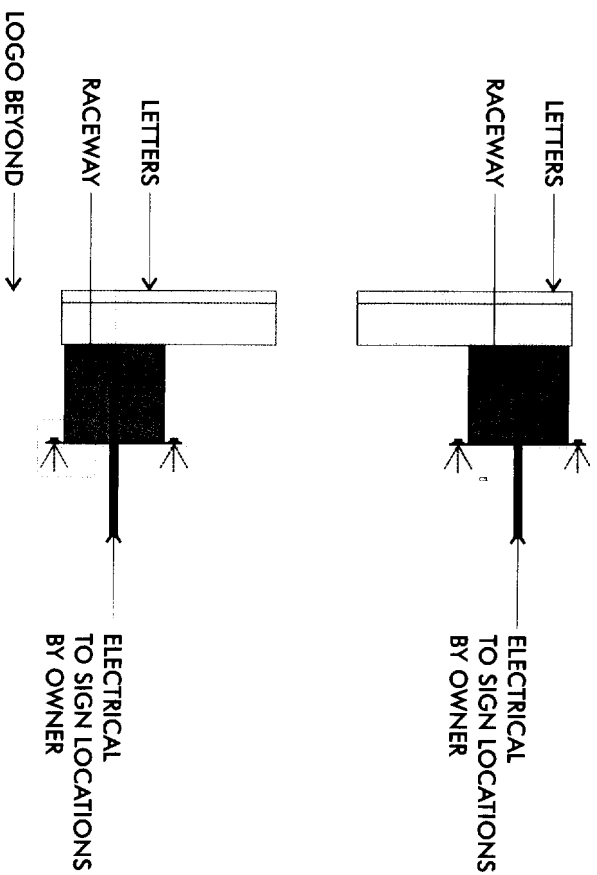
**Dermatology Associates 05756**

**PERMIT DRAWING**

Location: 50 Sewall St.  
 Portland, ME  
 Drawing No.: 1 of 2  
 Drawn by: DS  
 Date: 07.12.2006  
 Gen Ref.:



SLEEVE-ANCHOR MOUNTING DETAIL  
 NOT TO SCALE



RIGHT END VIEW  
 SCALE: 3/4" = 1'-0"