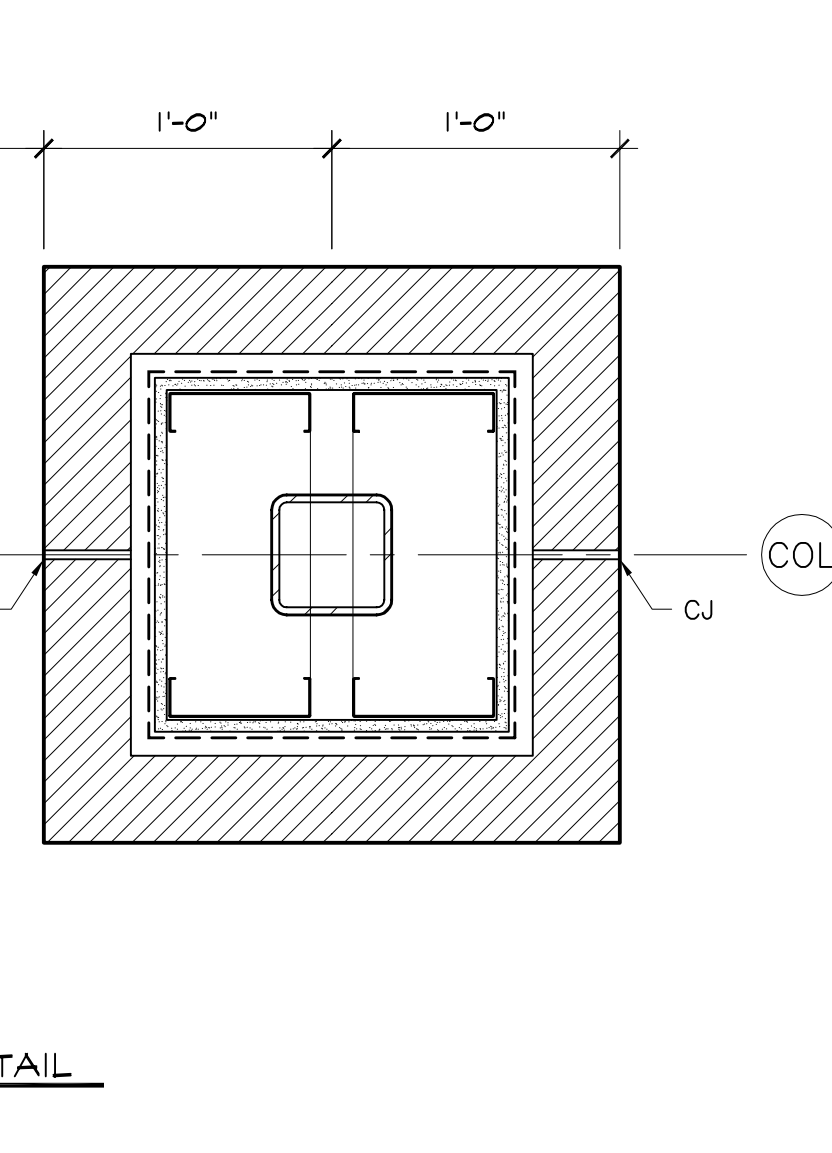
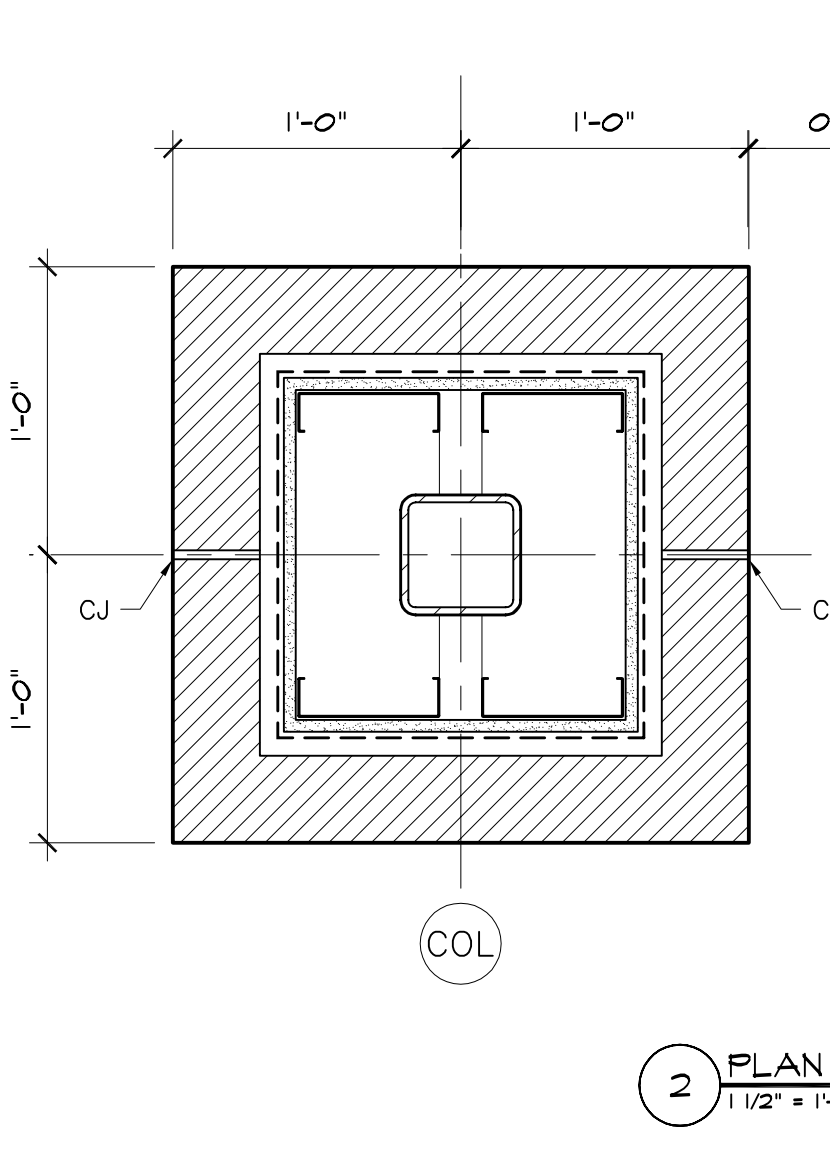
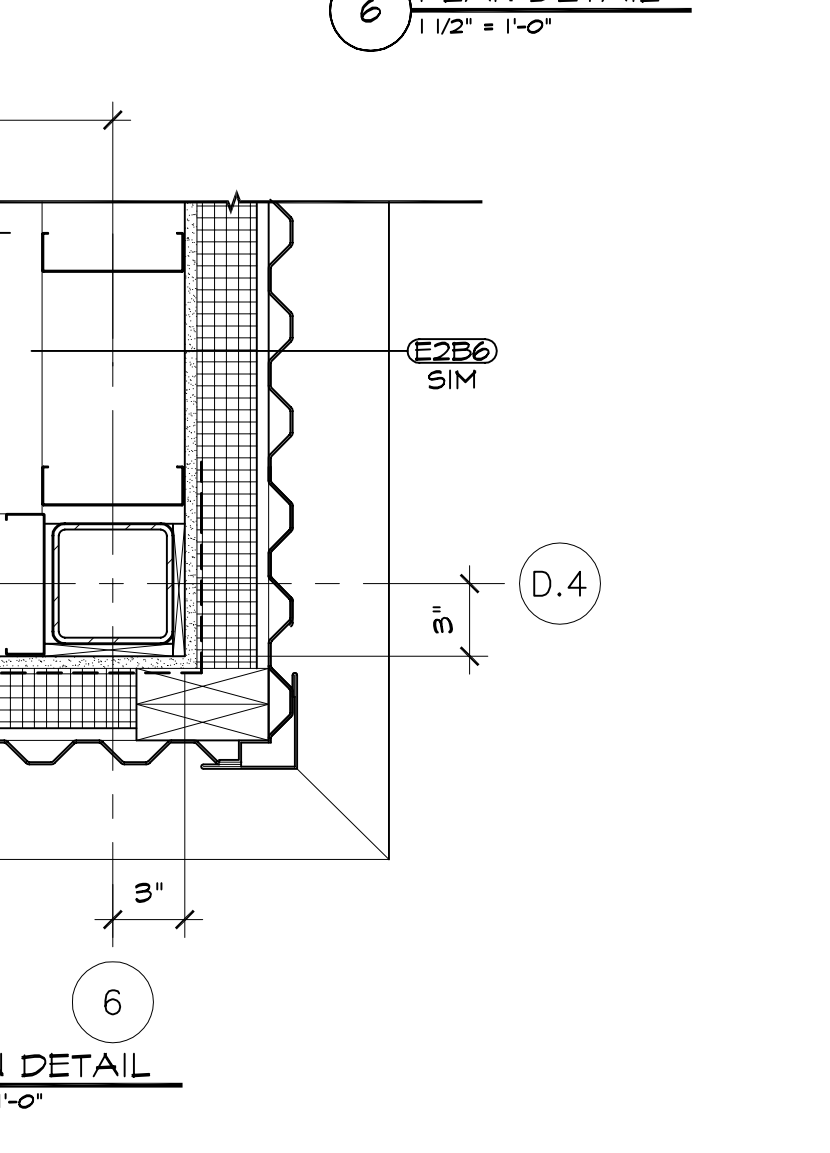
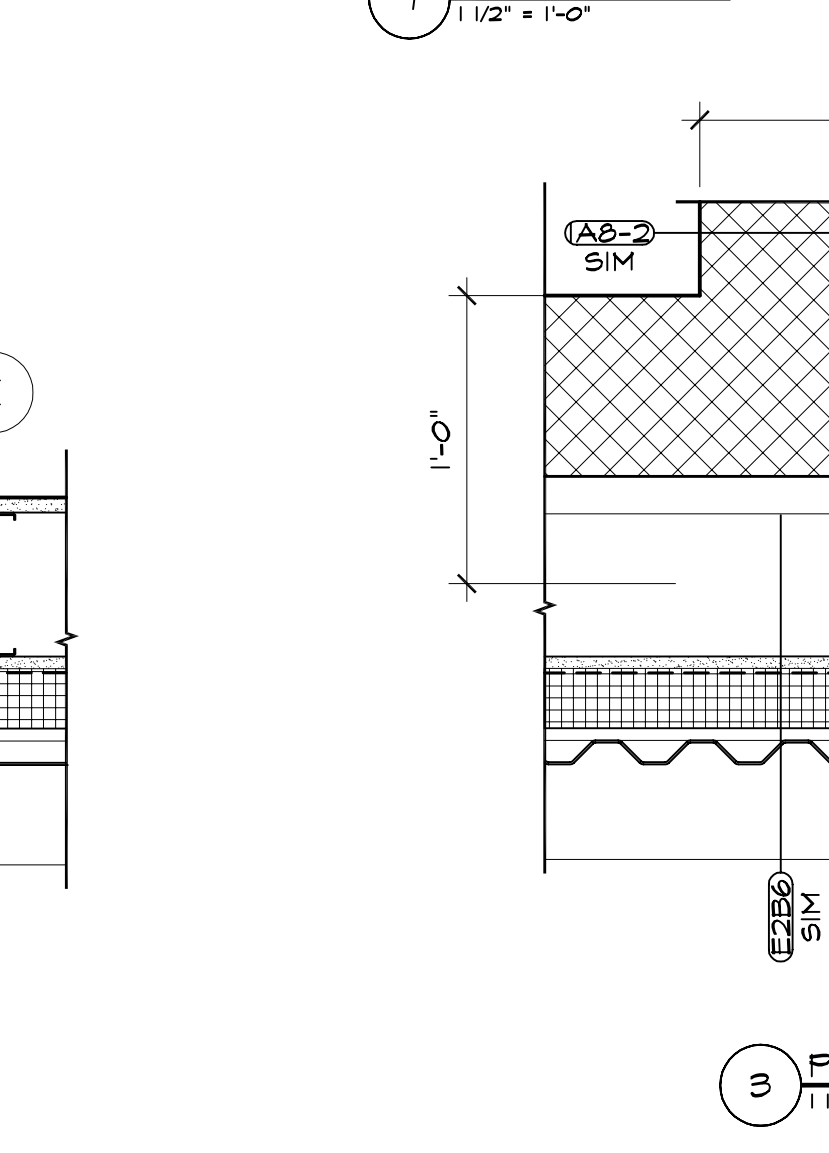
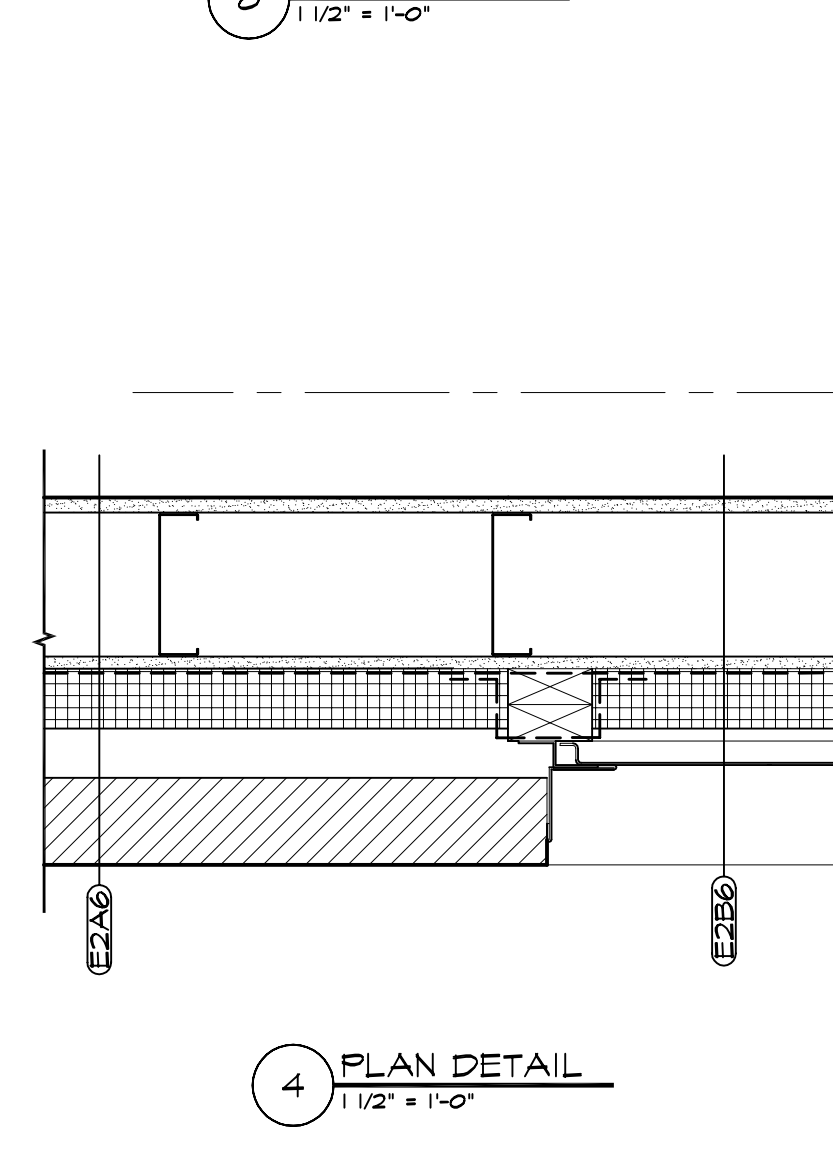
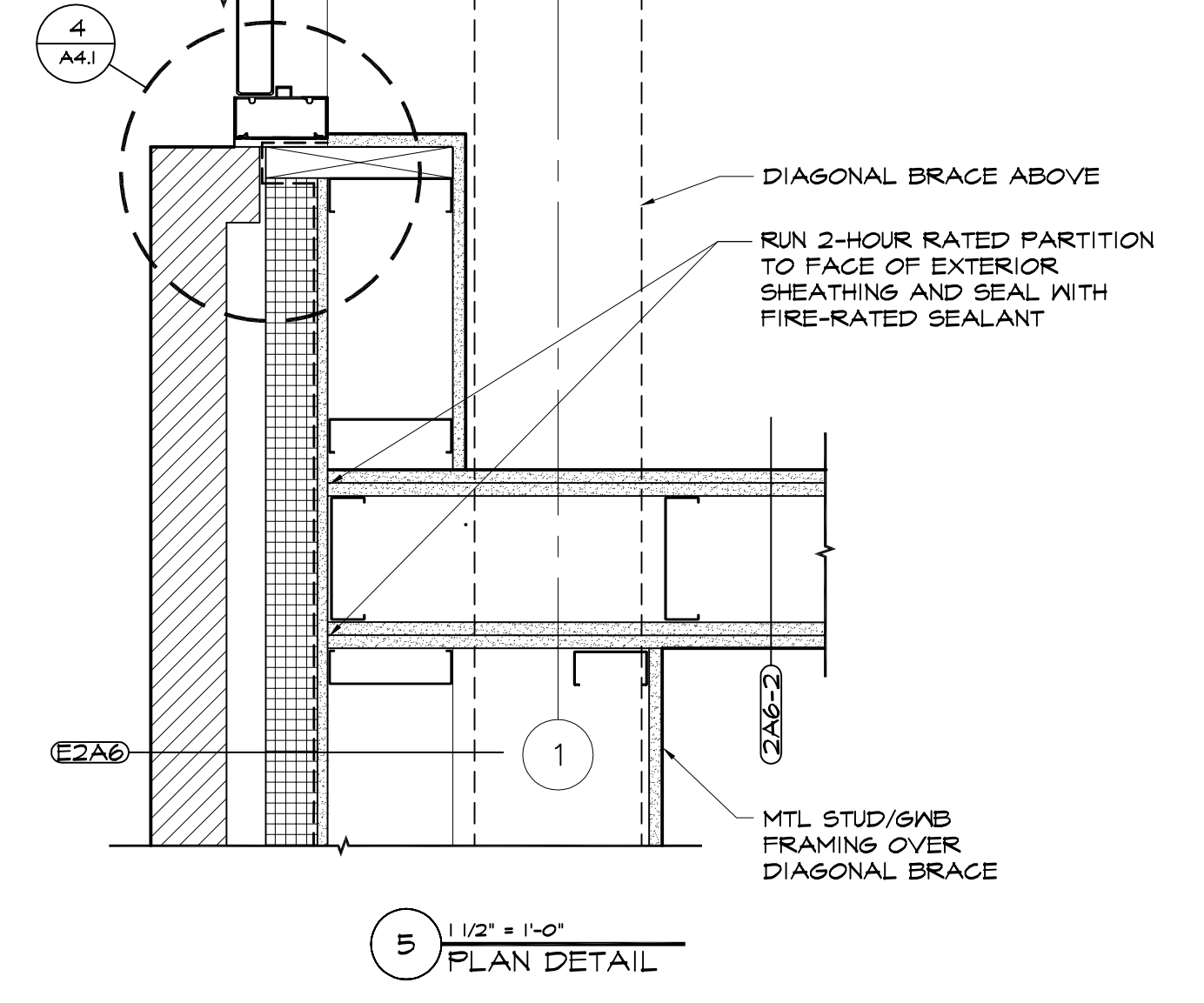
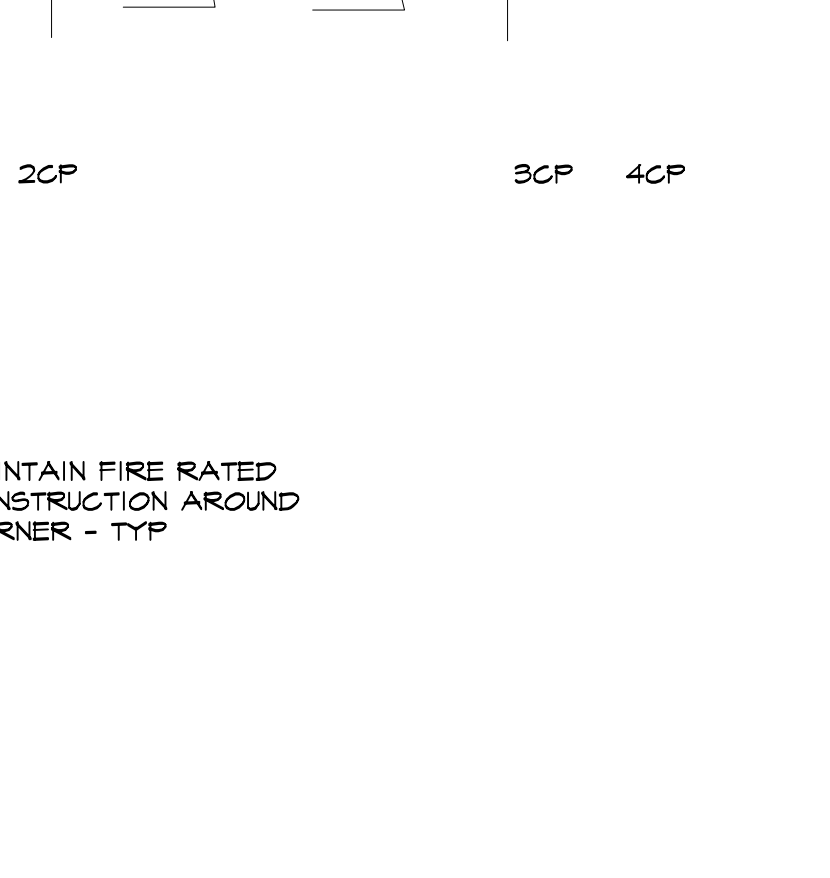
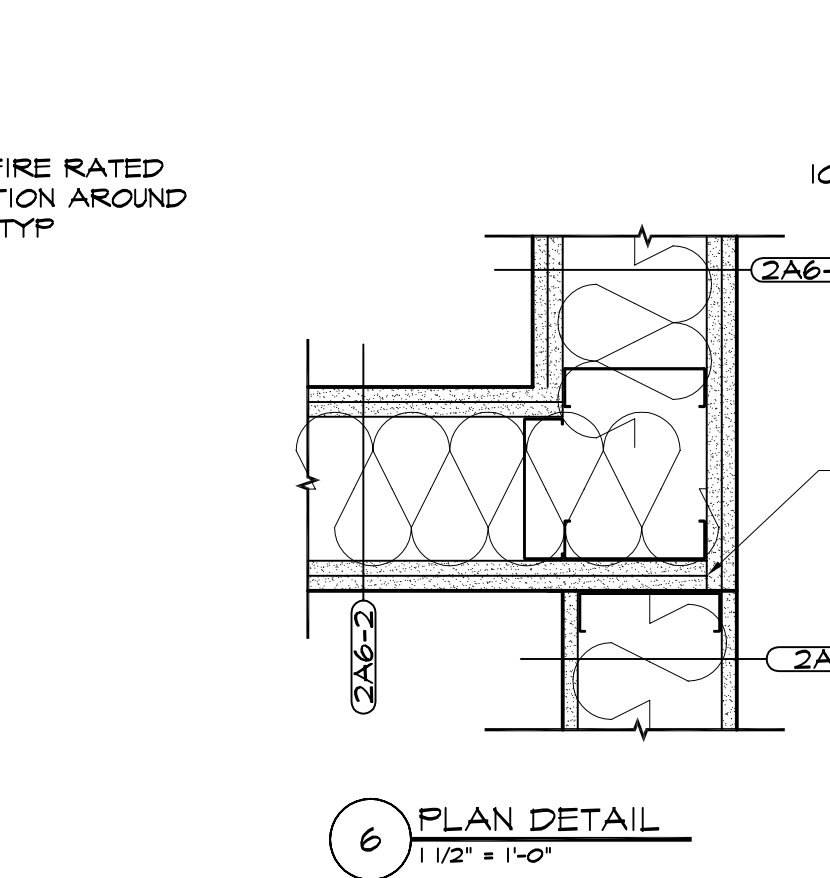
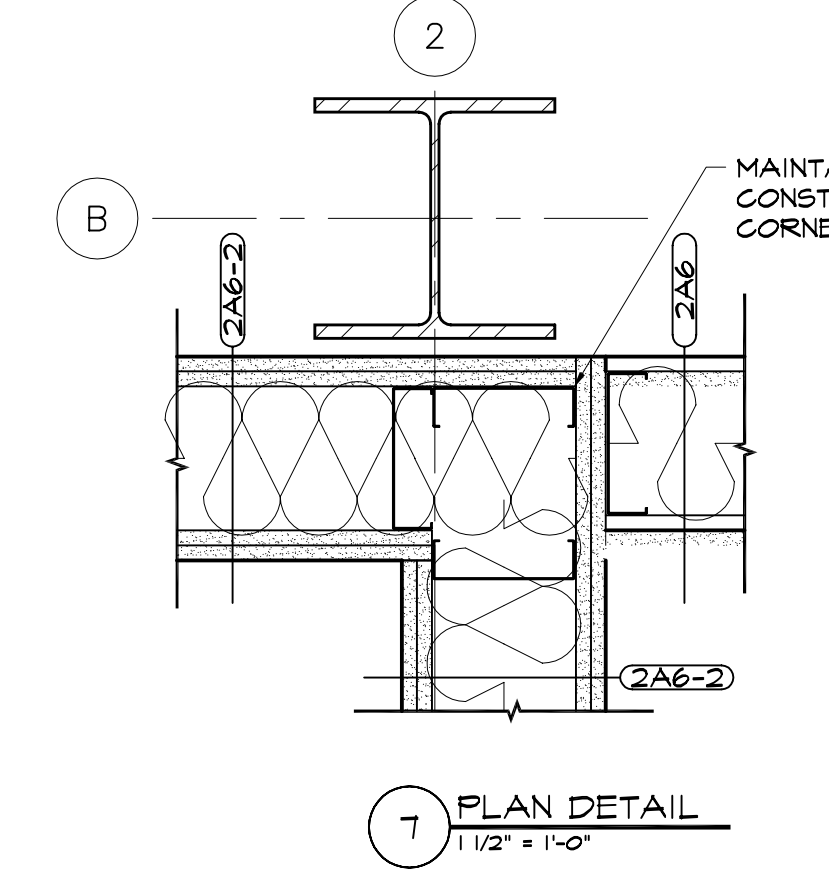
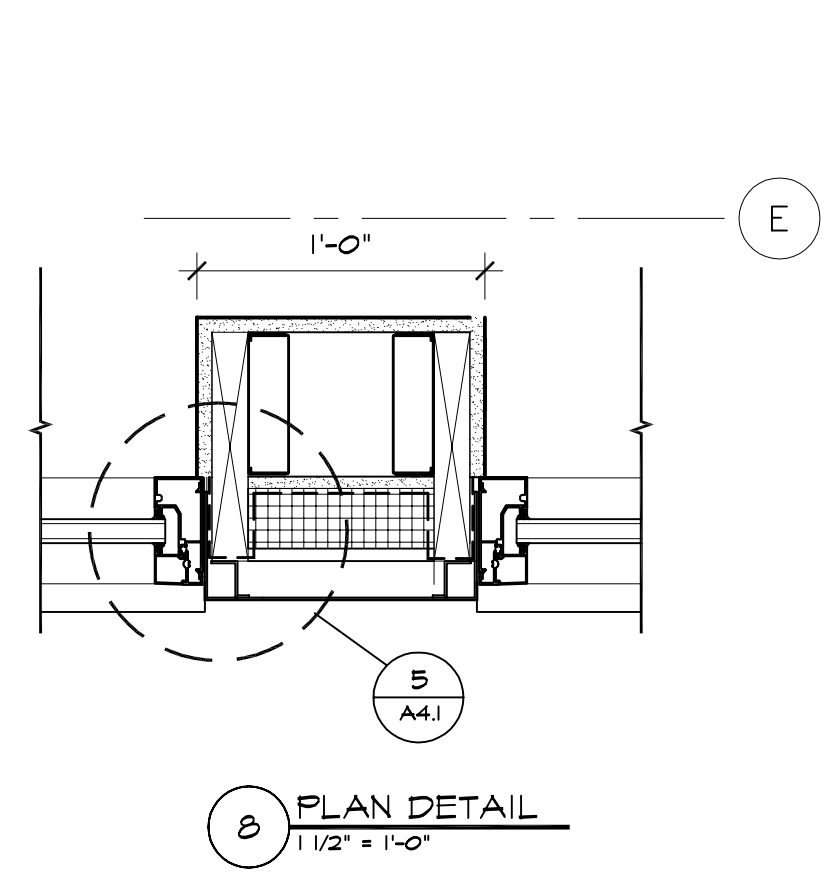
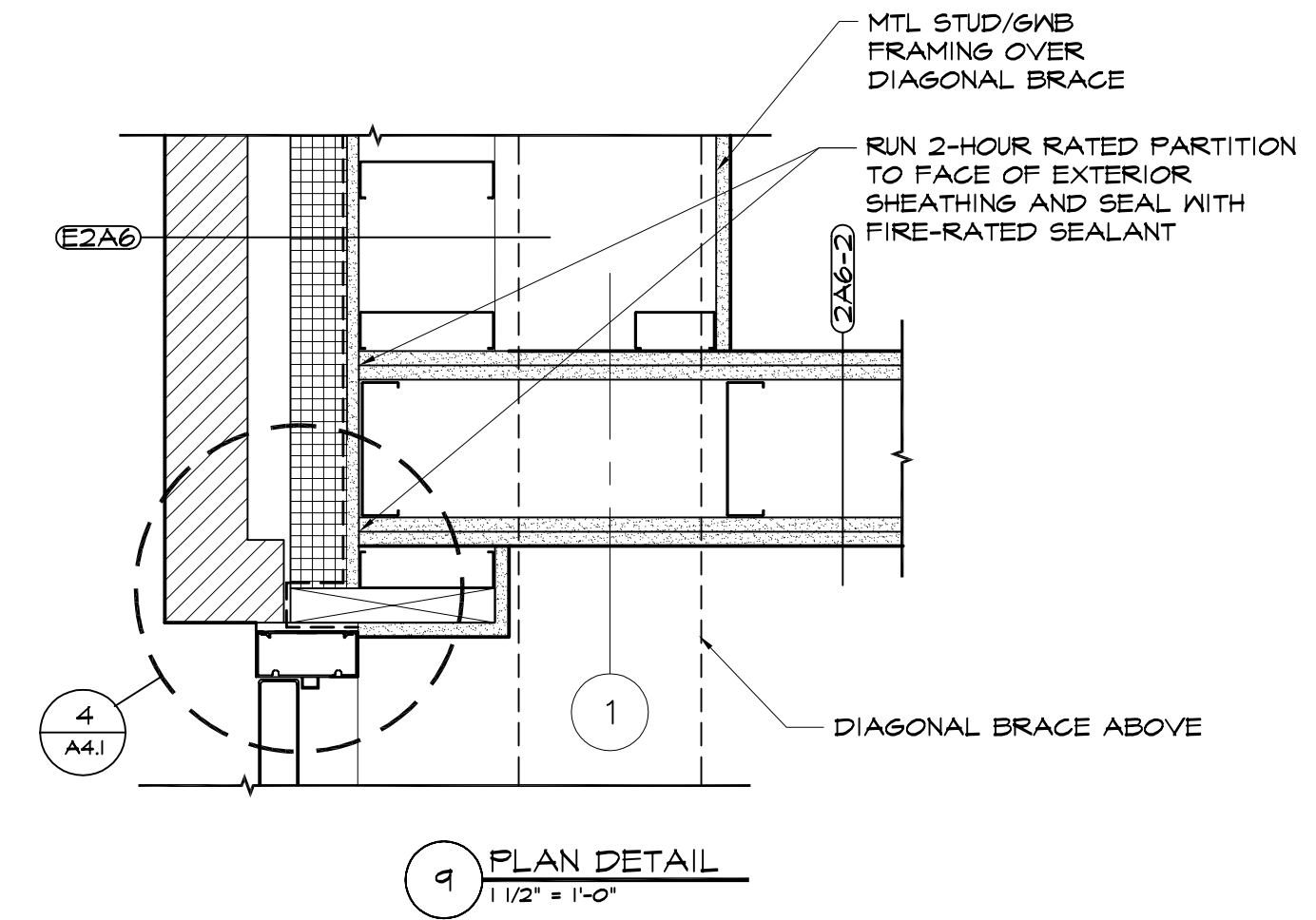
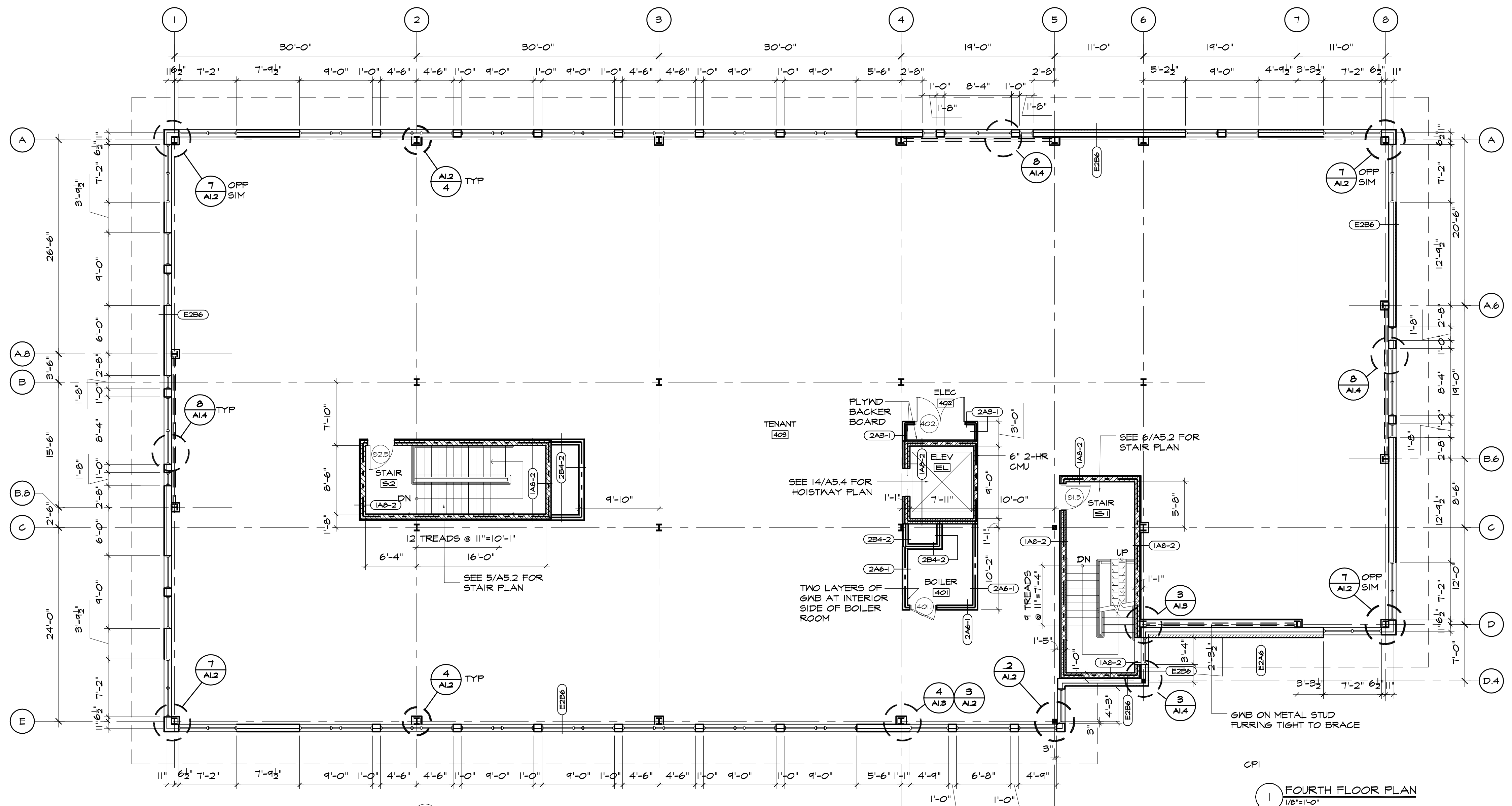


PLAN GENERAL NOTES

- THE DRAWINGS USE A SYSTEM OF KEYED NOTES ON PLANS, ELEVATIONS AND DETAILS. INSTRUCTIONS FOR SPECIFIC COMPONENTS OF THE WORK ARE KEYS TO THE DRAWINGS. BUILDING SYSTEMS (PARTITIONS, ROOF & FOUNDATION) ARE KEYS TO FLOOR PLANS, WALL SECTIONS, ROOF PLAN AND OTHER DETAILS AS APPROPRIATE.
- WORK FROM GIVEN DIMENSIONS. IN GENERAL, LARGE-SCALE DETAILS TAKE PRECEDENCE OVER SMALLER SCALE PLANS, ELEVATIONS AND BUILDING SECTIONS. NOTIFY THE ARCHITECT OF ANY DIMENSIONAL DISCREPANCIES PRIOR TO COMMENCING THE WORK, AND DO NOT BEGIN WORK UNTIL SUCH DISCREPANCIES ARE RESOLVED BY THE ARCHITECT. DO NOT SCALE DRAWINGS. DIMENSIONS INDICATED AS 'CLEAR' SHALL BE MAINTAINED IN CASES OF DISCREPANCY.
- DIMENSIONAL CONTROL:  
 EXTERIOR DIMENSIONS ARE FROM:  
 C. LINE OF COL. TO OUTSIDE FACE OF MASONRY  
 FACE OF MASONRY TO FACE OF MASONRY  
 FACE OF CONCRETE TO FACE OF CONCRETE  
 MASONRY OPENING TO MASONRY OPENING  
 C. LINE OF COLUMN TO FACE OF MASONRY  
 INTERIOR DIMENSIONS ARE FROM:  
 FACE OF STUD TO FACE OF STUD  
 FACE OF MASONRY TO FACE OF MASONRY  
 FACE OF STUD TO FACE OF MASONRY  
 C. LINE OF COL. TO FACE OF STUD OR MASONRY
- VERIFY ALL EXISTING CONDITIONS AND DIMENSIONS AND REPORT ANY DISCREPANCIES TO THE ARCHITECT. PROCEED WITH THE WORK ONLY AFTER DISCREPANCY HAS BEEN RESOLVED WITH THE ARCHITECT.
- MASONRY OPENING OR ROUGH OPENING DIMENSIONS INDICATED ARE NOMINAL DIMENSIONS ONLY. COORDINATE ALL MASONRY OPENINGS OR ROUGH OPENINGS WITH ACTUAL WINDOW UNIT, DOORFRAME, OR CURTAIN WALL/STOREFRONT SIZES AND REQUIREMENTS.
- FLOORING AND FLOOR FINISHES SHALL BE INSTALLED TO A MAXIMUM DIFFERENTIAL OF 1/16" BETWEEN DISSIMILAR MATERIALS. PROVIDE TRANSITION STRIPS OR THRESHOLDS. (1/2" MAXIMUM) OF SAME MATERIAL AS FLOORING AND/OR AS NOTED ON THE DRAWINGS.
- TYPICAL DETAILS:  
 THE FOLLOWING DETAILS ARE TYPICAL THROUGHOUT THIS PROJECT AND APPLY IN ALL CASES UNLESS SPECIFICALLY NOTED OTHERWISE. PLEASE NOTE THAT THESE DETAILS MAY NOT BE DIRECTLY REFERENCED FROM THE PLANS OR OTHER DETAILS:  
 ALL COLUMNS ADJACENT TO OR INTEGRAL WITH EXTERIOR WALL CONSTRUCTION SHALL BE ENCLOSED WITHIN THE WALL CONSTRUCTION UNLESS NOTED OTHERWISE.  
 SLABS AT ALL FLOOR DRAINS SHALL BE PITCHED TOWARD THE DRAIN.  
 ALL GMB PARTITIONS INTERSECTING MASONRY PARTITIONS, EITHER NEW OR EXISTING, SHALL BE FINISHED WITH A "J" BEAD AND SEALANT.  
 ALL ROOF LEADERS, HEAT PIPING, SPRINKLER RISERS OR MISCELLANEOUS PIPING SHALL BE ENCLOSED WITHIN THE WALL CONSTRUCTION.  
 ALL DUCT PENETRATIONS THROUGH FLOORS SHALL BE ENCLOSED IN A CHASE.  
 ALL TOP-OF-WALL CONDITIONS SHALL BE SEALED TO DECK ABOVE AS INDICATED ON THE SYSTEMS SHEET AND TYPICAL DETAILS ON SHEET A7.1 TO MAINTAIN THE REQUIRED SMOKE-OR FIRE-RATING. COORDINATE TOP OF WALL CONSTRUCTION WITH FRAMING PLANS. SEE SHEET A6.2 FOR TRANSITIONS AND OVERLAPS BETWEEN AIR BARRIER, METAL FLASHING AND WALL MEMBRANE FLASHINGS, AND STANDARD AIR BARRIER INSTALLATION DIAGRAMS.  
 UNLESS NOTED OTHERWISE, THE LOCATION OF DOORFRAMES SHALL BE:  
 8" FROM ADJACENT WALL TO THE HINGE SIDE IN CMU PARTITIONS.  
 4" FROM ADJACENT WALL TO THE HINGE SIDE IN METAL STUD PARTITIONS.  
 MAINTAIN A CLEAR DIMENSION OF 1'-6" FROM ALL ADJACENT CONSTRUCTION TO THE LATCH (PULL) SIDE OF THE DOOR.  
 MAINTAIN OTHER CLEAR DIMENSIONS IN ACCORDANCE WITH THE LATEST VERSION OF THE ADA ACCESSIBILITY GUIDELINES (ADAAG).  
 EXTEND ALL EXTERIOR WALL DRYWALL 11'-0" AFF. AND TAPE, MUD, SAND AND PRIME



May 24, 2005 - 4:22pm

H:\Master Proj Files\2\OlympiaSewallStreet\MOB\Cad\SD\A1.4.dwg