



Jeff Levine, AICP, Director  
Planning & Urban Development Department

Reviewed for Code Compliance  
Inspections Division  
Approved with Conditions

Date: 10/22/14

**Electronic Signature and Fee Payment Confirmation**

Notice: Your electronic signature is considered a legal signature per state law.

By digitally signing the attached document(s), you are signifying your understanding this is a legal document and your electronic signature is considered a **legal signature** per Maine state law. You are also signifying your intent on paying your fees by the opportunities below.

I, the undersigned, intend and acknowledge that no Site Plan or Historic Preservation Applications can be reviewed until payment of appropriate application fees are **paid in full** to the Inspections Office, City of Portland Maine by method noted below:

- Within 24-48 hours, once my complete application and corresponding paperwork has been electronically delivered, I intend to **call the Inspections Office** at 207-874-8703 and speak to an administrative representative and provide a credit/debit card over the phone.
- Within 24-48 hours, once my application and corresponding paperwork has been electronically delivered, I intend to **call the Inspections Office** at 207-874-8703 and speak to an administrative representative and provide a credit/debit card over the phone.
- I intend to deliver a payment method through the U.S. Postal Service mail once my application paperwork has been electronically delivered.

Peter Marchant - KJK Wireless, LLC  
\_\_\_\_\_  
Applicant Signature:

10/7/14  
\_\_\_\_\_  
Date:

Peter Marchant - KJK Wireless, LLC  
\_\_\_\_\_  
I have provided digital copies and sent them on:

10/7/14  
\_\_\_\_\_  
Date:

NOTE: All electronic paperwork must be delivered to [buildinginspections@portlandmaine.gov](mailto:buildinginspections@portlandmaine.gov) or by physical means i.e. a thumb drive or CD to the Inspections Office, City Hall, 3<sup>rd</sup> Floor, Room 315.



Reviewed for Code Compliance  
Inspections Division  
Approved with Conditions

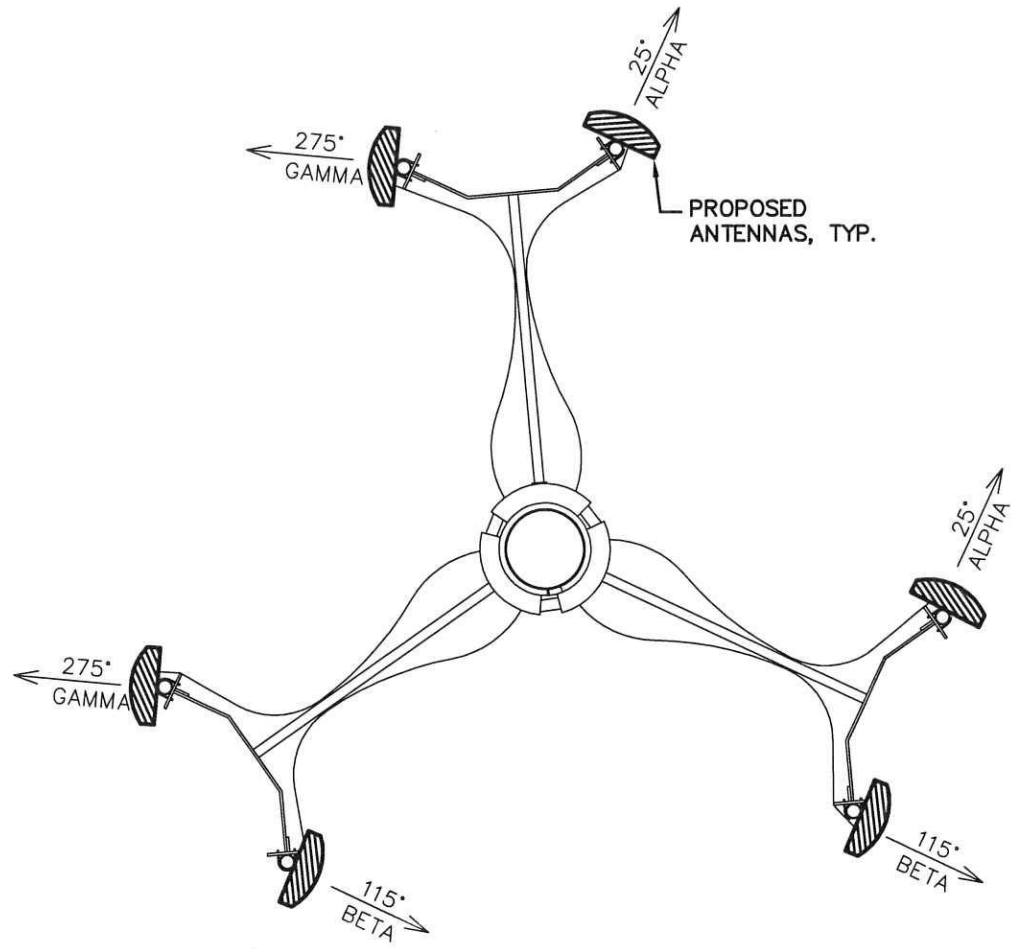
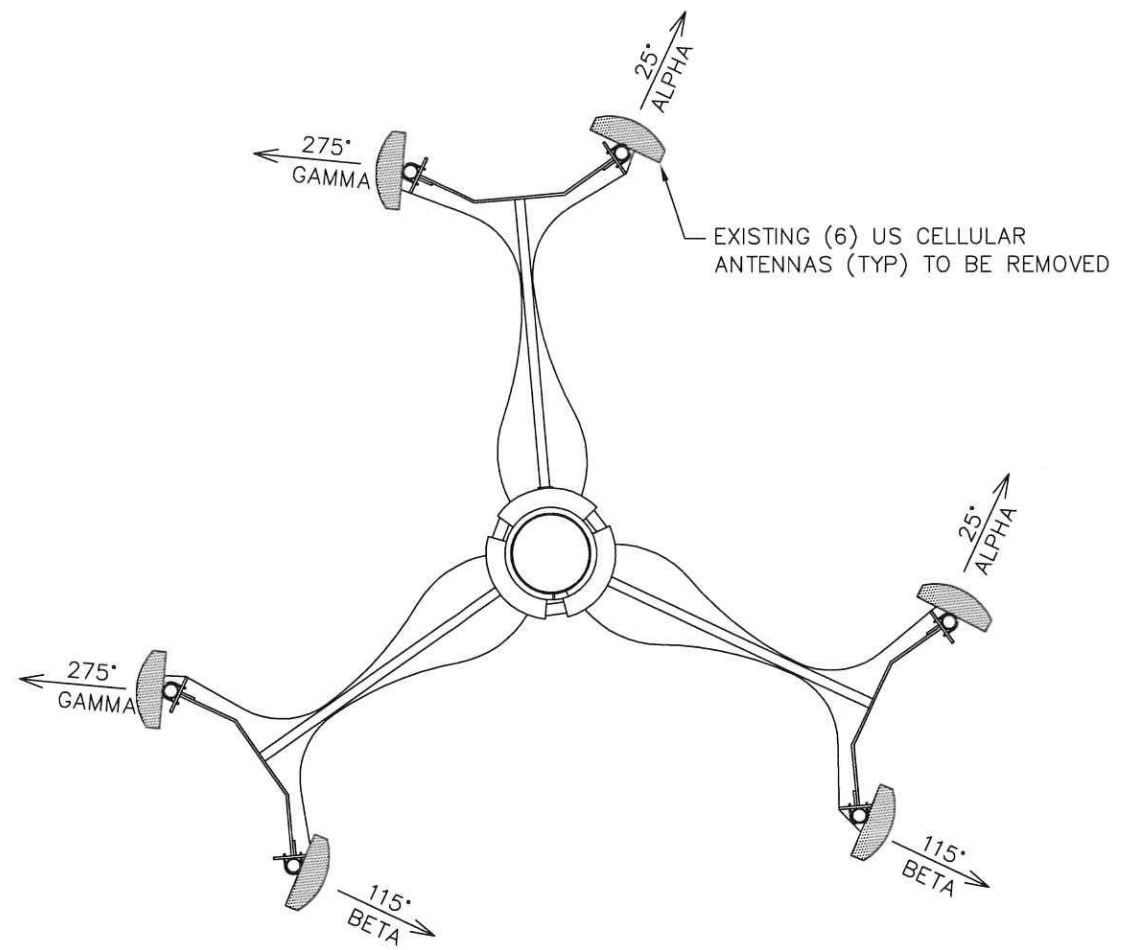
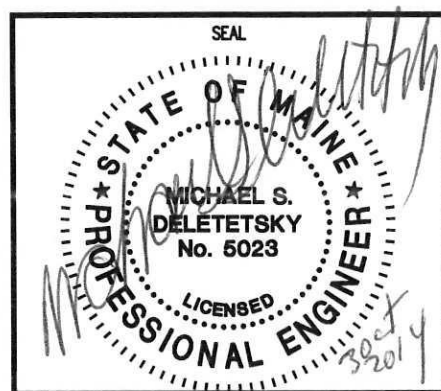
PLANS PREPARED BY:  
**US**  
10 Corporate Drive, St

Date: 10/22/14

PROJECT  
**853329 - DOUBLE TREE**  
1230 CONGRESS STREET  
PORTLAND, ME NE 04101  
(CUMBERLAND COUNTY)

PLANS PREPARED BY:  
**amec**  
343 Gorham Road, South Portland ME 04106  
P: (207) 761-1770 F: (207) 774-1246 www.amec.com

PROJECT COORDINATION & MANAGEMENT:  
**KJK Wireless, LLC**  
127 Ridge Road, Nashua, NH 03062  
Phone: (603) 888-8974



EXISTING ANTENNA/COAX SCHEDULE					
SECTOR	MANUFACTURER (MODEL #)	MOUNTING HEIGHT	AZIMUTH	COAX SIZE	NOTES
ALPHA	ANTENNA	☉ 88'-0	25°	(1) 1 1/4"	ANTENNA TO BE REMOVED, CABLES TO REMAIN AND BE ATTACHED TO PROPOSED CDMA ANTENNA.
ALPHA	ANTENNA	☉ 88'-0	25°	(1) 1 1/4"	
BETA	ANTENNA	☉ 88'-0	115°	(1) 1 1/4"	
BETA	ANTENNA	☉ 88'-0	115°	(1) 1 1/4"	
GAMMA	ANTENNA	☉ 88'-0	275°	(1) 1 1/4"	
GAMMA	ANTENNA	☉ 88'-0	275°	(1) 1 1/4"	

PROPOSED ANTENNA/COAX SCHEDULE							
SECTOR	TECHNOLOGY	MANUFACTURER (MODEL #)	MOUNTING HEIGHT	AZIMUTH	COAX SIZE	KMW TEE	COAX LENGTH
ALPHA		BXA-185063-BCF-EDIN-2	☉ 88'-0	25°	(2) 1 1/4"		105'±
ALPHA	LTE BAND-2	BXA-185040-BCF-EDIN-4	☉ 88'-0	25°	(2) 1 1/4"	1	105'±
BETA		BXA-185063-BCF-EDIN-2	☉ 88'-0	115°	(2) 1 1/4"		105'±
BETA	LTE BAND-2	BXA-185040-BCF-EDIN-4	☉ 88'-0	115°	(2) 1 1/4"	1	105'±
GAMMA		BXA-185063-BCF-EDIN-2	☉ 88'-0	275°	(2) 1 1/4"		105'±
GAMMA	LTE BAND-2	BXA-185040-BCF-EDIN-4	☉ 88'-0	275°	(2) 1 1/4"	1	105'±

10/3/14	ISSUED FOR CONSTRUCTION	
REV	DATE	ISSUED FOR

PROJECT NO: 3618138235

DRAWN BY: EJG

RELEASED BY: MSD

SHEET TITLE  
**ANTENNA CONFIGURATIONS**

SHEET NUMBER <b>C-4</b>	REVISION: <b>0</b>
----------------------------	-----------------------



Reviewed for Code Compliance  
Inspections Division  
Approved with Conditions



10 Corporate Drive, S

Date: 10/22/14

PROJECT

**853329 - DOUBLE TREE**  
1230 CONGRESS STREET  
PORTLAND, ME NE 04101  
(CUMBERLAND COUNTY)

PLANS PREPARED BY:



511 Congress Street Suite 200, Portland ME 04101  
P: (207) 774-5401 F: (207) 775-4762 www.amec.com

PROJECT COORDINATION & MANAGEMENT:

**KJK Wireless, LLC**  
127 Ridge Road, Nashua, NH 03062  
Phone: (603) 888-8974

SEAL



REV	DATE	ISSUED FOR
△	10/3/14	ISSUED FOR CONSTRUCTION

PROJECT NO: 3618138235

DRAWN BY: E J G

RELEASED BY: MSD

SHEET TITLE

**BUILDING ELEVATIONS**

SHEET NUMBER

**C-1**

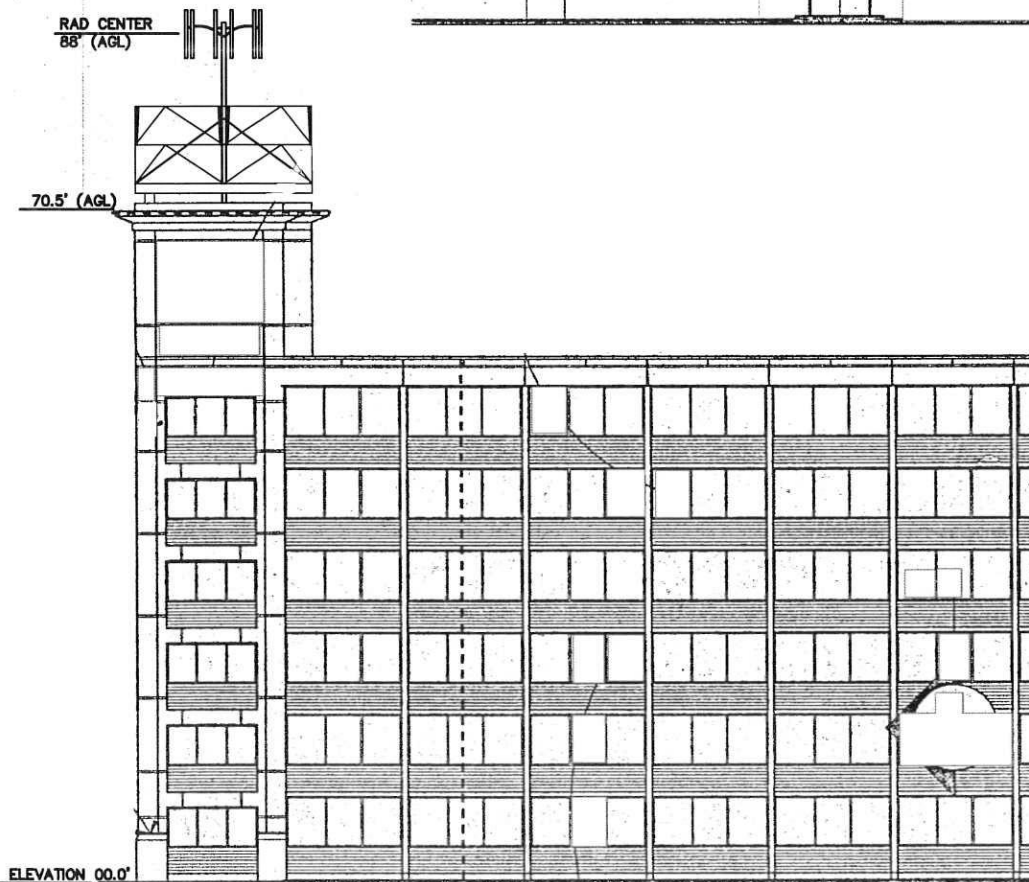
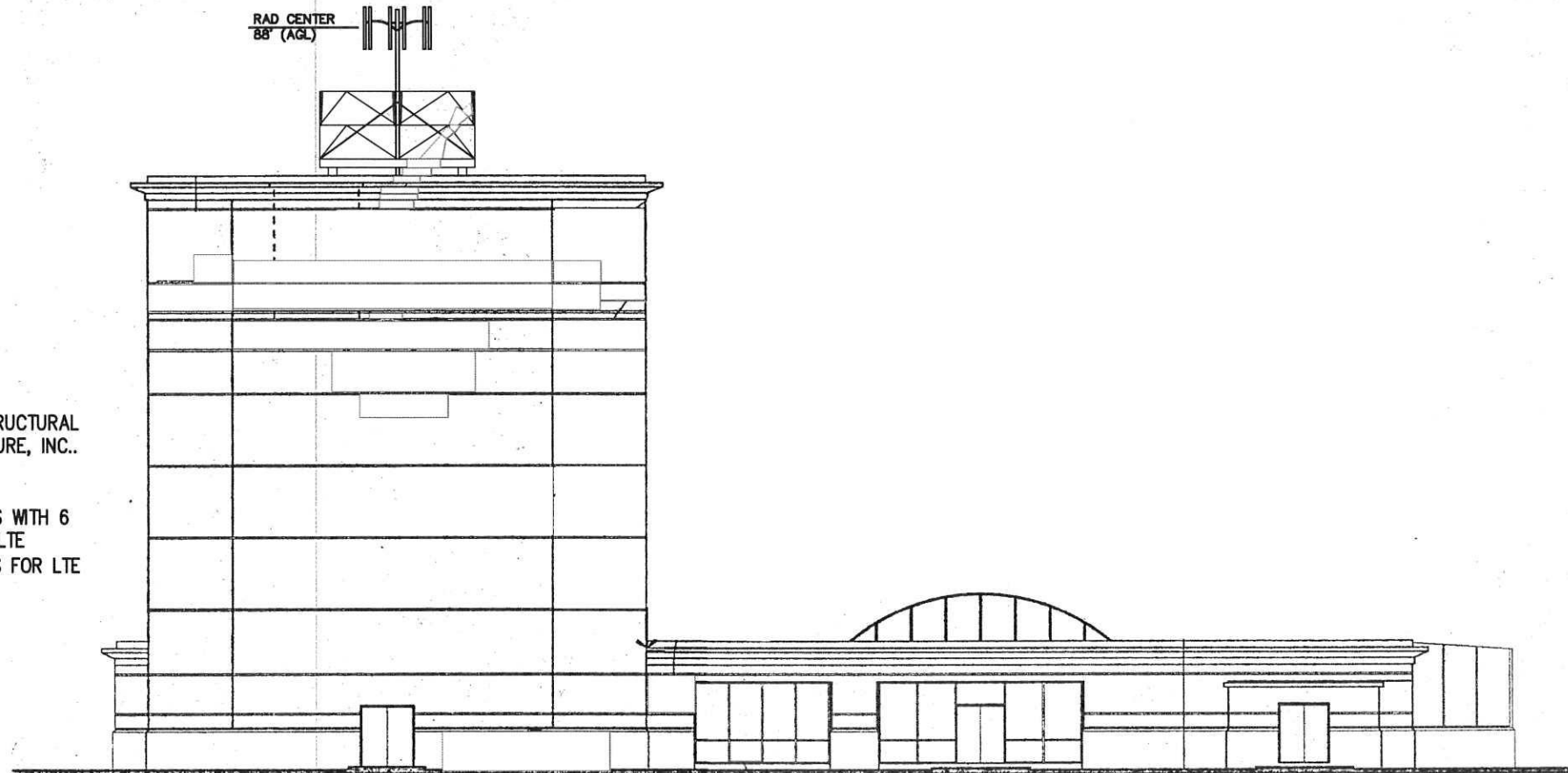
REVISION:

**0**

NOTES:

1. CONTRACTOR PLEASE REFER TO ANTENNA MAPPING AND STRUCTURAL ANALYSIS PERFORMED BY AMEC ENVIRONMENT & INFRASTRUCTURE, INC.. DATED 10-3-14 FOR DETAILS.

2. REPLACE 6 EXISTING CDMA/LTE BAND-2 V-POLE ANTENNAS WITH 6 CROSS POLE ANTENNAS PROVIDING SEPARATE ANTENNAS FOR LTE BAND-2. RUN 6 ADDITIONAL 1-1/4" MAIN TRANSMISSION LINES FOR LTE BAND-2.



SHEET NO.	DESCRIPTION	DATE	REV. NO.
C-1	BUILDING ELEVATIONS	10/3/14	0
C-2	EQUIPMENT LAYOUT PLAN AND ELEVATION	10/3/14	0
C-3	HATCH PLATE, CABLE TRAY DETAIL AND COAX LAYOUT	10/3/14	0
C-4	ANTENNA CONFIGURATIONS	10/3/14	0
E-1	ONE-LINE DIAGRAM	10/3/14	0
SHEET INDEX			

**BUILDING ELEVATIONS**

SCALE: N.T.S.



Reviewed for Code Compliance  
Inspections Division  
Approved with Conditions

PLANS PI  
 U.S.  
10 Corporate Drive, S

Date: 10/22/14

PROJECT

**853329 - DOUBLE TREE**  
1230 CONGRESS STREET  
PORTLAND, ME NE 04101  
(CUMBERLAND COUNTY)

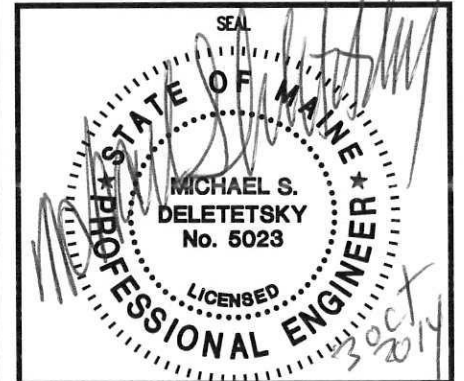
PLANS PREPARED BY:



511 Congress Street Suite 200, Portland ME 04101  
P: (207) 774-5401 F: (207) 775-4762 www.amec.com

PROJECT COORDINATION & MANAGEMENT:

**KJK Wireless, LLC**  
127 Ridge Road, Nashua, NH 03062  
Phone: (603) 888-8974



REV	DATE	ISSUED FOR
△	10/3/14	ISSUED FOR CONSTRUCTION

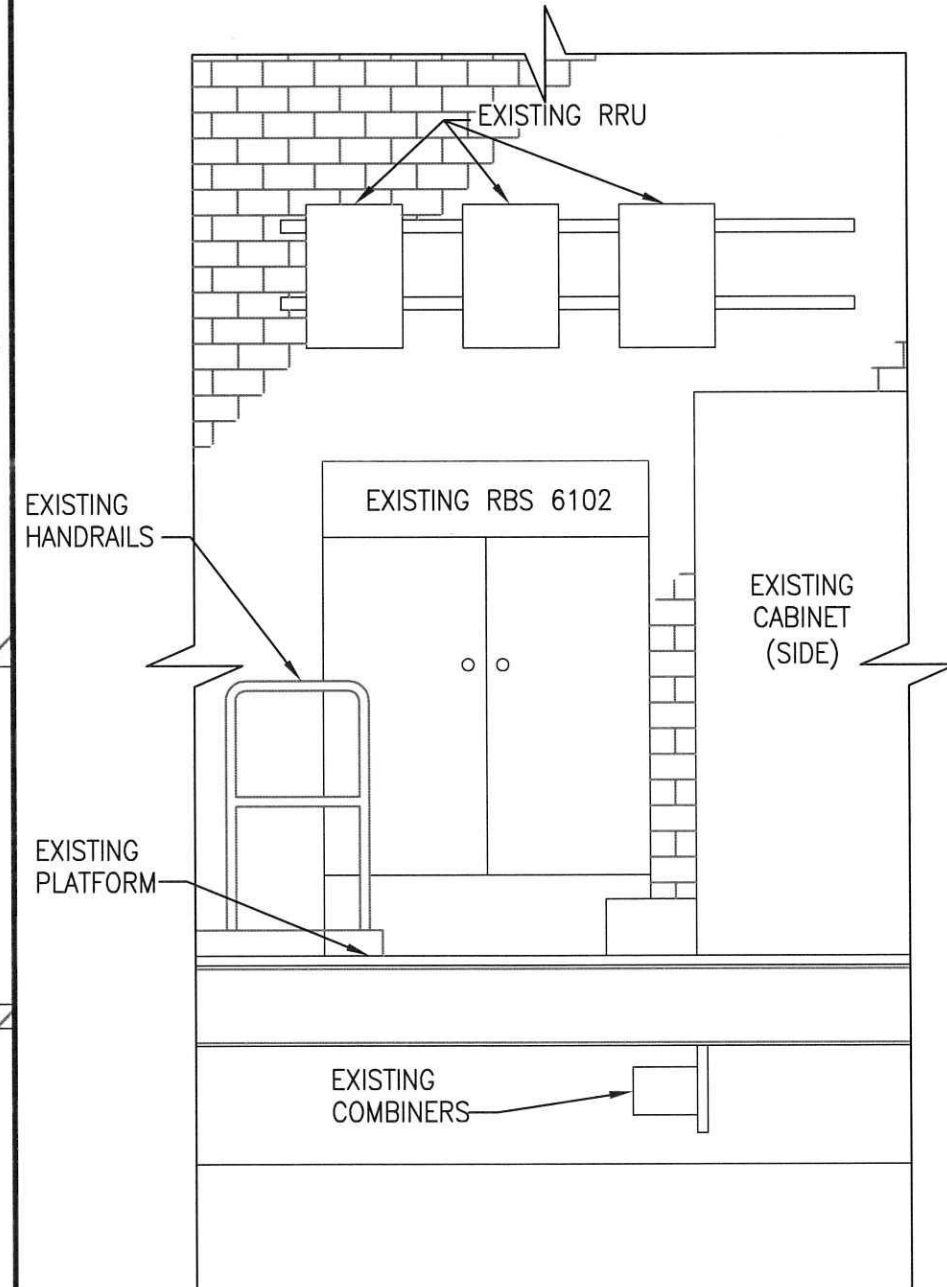
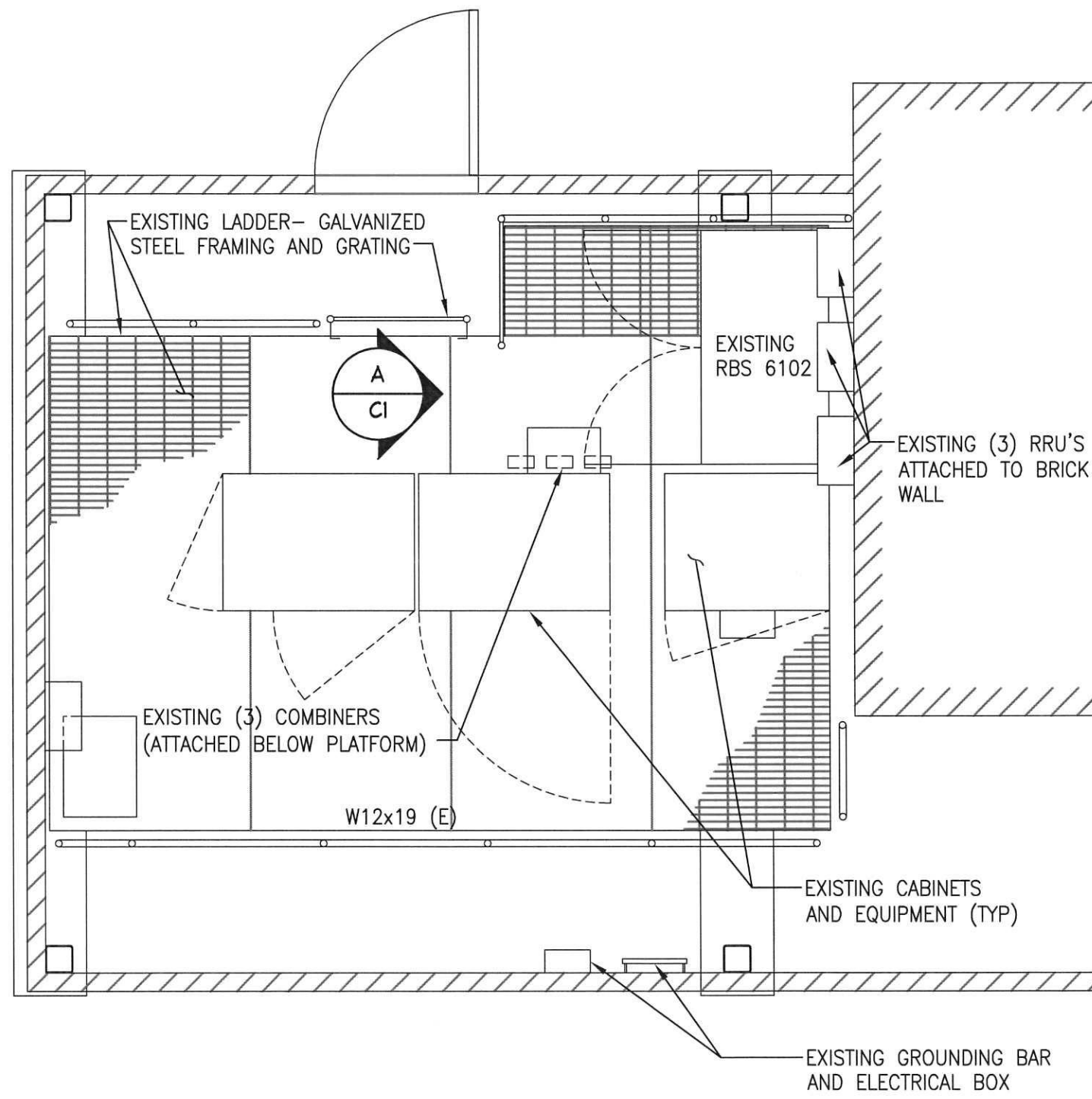
PROJECT NO: 3618138235

DRAWN BY: E J G

RELEASED BY: M S D

SHEET TITLE  
**EQUIPMENT LAYOUT  
PLAN AND ELEVATIONS**

SHEET NUMBER <b>C-2</b>	REVISION: <b>0</b>
----------------------------	-----------------------



**EQUIPMENT LAYOUT**  
SCALE: N.T.S.

**A EQUIPMENT ELEVATION**  
SCALE: N.T.S.



**USSC 853329 Double Tree Title Sheet**

<b><u>Discipline</u></b>	<b><u>Sheet</u></b>	<b><u>Title</u></b>
C1	1	Building Elevation
C2	2	Equipment Layout Plan and Elevation
C4	3	Antenna Configurations



Reviewed for Code Compliance  
Inspections Division  
Approved with Conditions

Date: 10/22/14