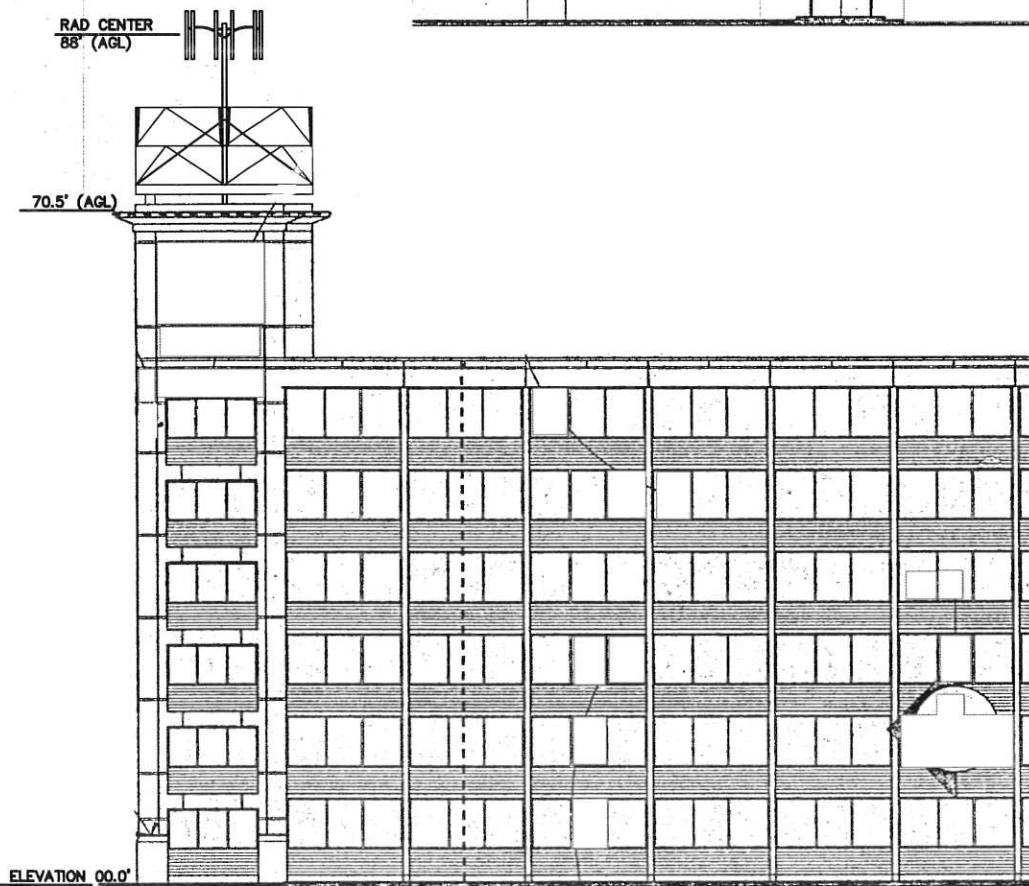


- NOTES:
1. CONTRACTOR PLEASE REFER TO ANTENNA MAPPING AND STRUCTURAL ANALYSIS PERFORMED BY AMEC ENVIRONMENT & INFRASTRUCTURE, INC.. DATED 10-3-14 FOR DETAILS.
 2. REPLACE 6 EXISTING CDMA/LTE BAND-2 V-POLE ANTENNAS WITH 6 CROSS POLE ANTENNAS PROVIDING SEPARATE ANTENNAS FOR LTE BAND-2. RUN 6 ADDITIONAL 1-1/4" MAIN TRANSMISSION LINES FOR LTE BAND-2.



SHEET NO.	DESCRIPTION	DATE	REV. NO.
C-1	BUILDING ELEVATIONS	10/3/14	0
C-2	EQUIPMENT LAYOUT PLAN AND ELEVATION	10/3/14	0
C-3	HATCH PLATE, CABLE TRAY DETAIL AND COAX LAYOUT	10/3/14	0
C-4	ANTENNA CONFIGURATIONS	10/3/14	0
E-1	ONE-LINE DIAGRAM	10/3/14	0
SHEET INDEX			

PLANS PREPARED FOR:

10 Corporate Drive, Suite 210, Bedford, NH 03110

PROJECT INFORMATION

853329 - DOUBLE TREE
 1230 CONGRESS STREET
 PORTLAND, ME NE 04101
 (CUMBERLAND COUNTY)

PLANS PREPARED BY:

511 Congress Street Suite 200, Portland ME 04101
 P: (207) 774-5401 F: (207) 775-4762 www.amec.com

PROJECT COORDINATION & MANAGEMENT:

KJK Wireless, LLC
 127 Ridge Road, Nashua, NH 03062
 Phone: (603) 888-8974

SEAL

REV	DATE	ISSUED FOR
△	10/3/14	ISSUED FOR CONSTRUCTION

PROJECT NO: 3618138235

DRAWN BY: EJG

RELEASED BY: MSD

SHEET TITLE

BUILDING ELEVATIONS

SHEET NUMBER	REVISION:
C-1	0