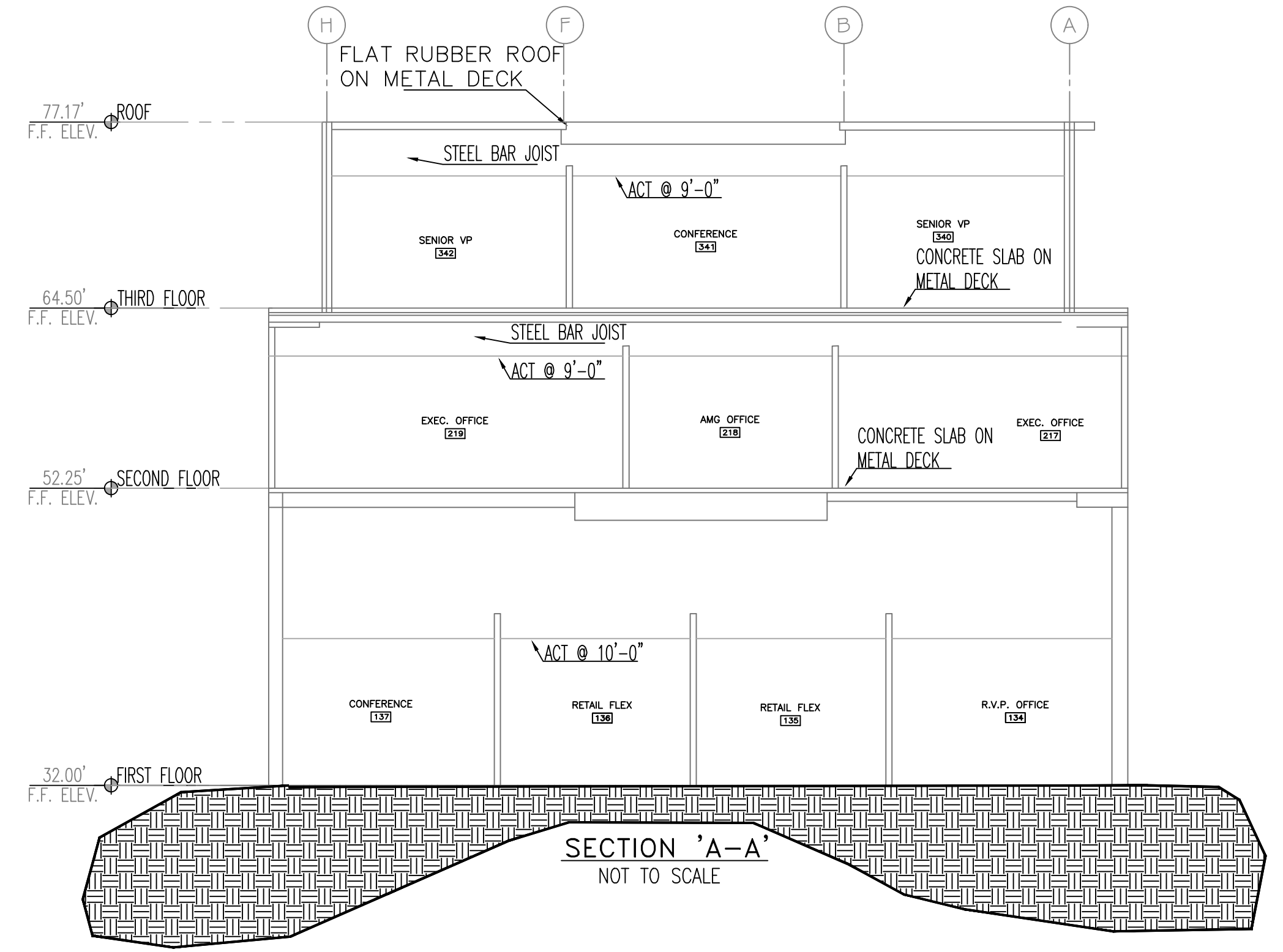


**FIRE SPRINKLER PLAN - SECOND FLOOR**  
 SCALE: 1/8"=1'-0"  
 AREA PROTECTED: 5404 SQ.FT.  
 FINISH FLOOR ELEVATION : 52.50'  
 COLOR CODE:  
 NOTE: AREA PROTECTED AND HEAD COUNT LIMITED TO AREA OF WORK LINE  
 SECOND FLOOR LIMIT OF WORK LINE

Symbol	Count	Thread	K-Factor	Description	Note
○	39	1/2"	5.6	NEW RELIABLE F1FR56 CHROME RECESSED PENDENT 200' 1/2" QR SIN# RA1414	on Drop
○	1	1/2"	5.6	EXISTING RELIABLE F1FR56 BRASS UPRIGHT 200' SIN# RA1425	on Line
○	2	1/2"	5.6	NEW RELIABLE F1FR56 CHROME RECESSED PENDENT 200' 1/2" QR SIN# RA1414	on Drop
●	6	1/2"	5.6	NEW RELIABLE 05-56 CONCEALER WITH WHITE COVER 212' QR 1/2" SIN# RA3415	on Drop

48 = Total Number of Heads This Floor



**THIRD FLOOR PROOF CALCULATION REMOTE AREA**  
 (1750 SQ. FT. / 900 SQ. FT.)  
 (ELEV. @ HIGHEST HEAD = 73.5')

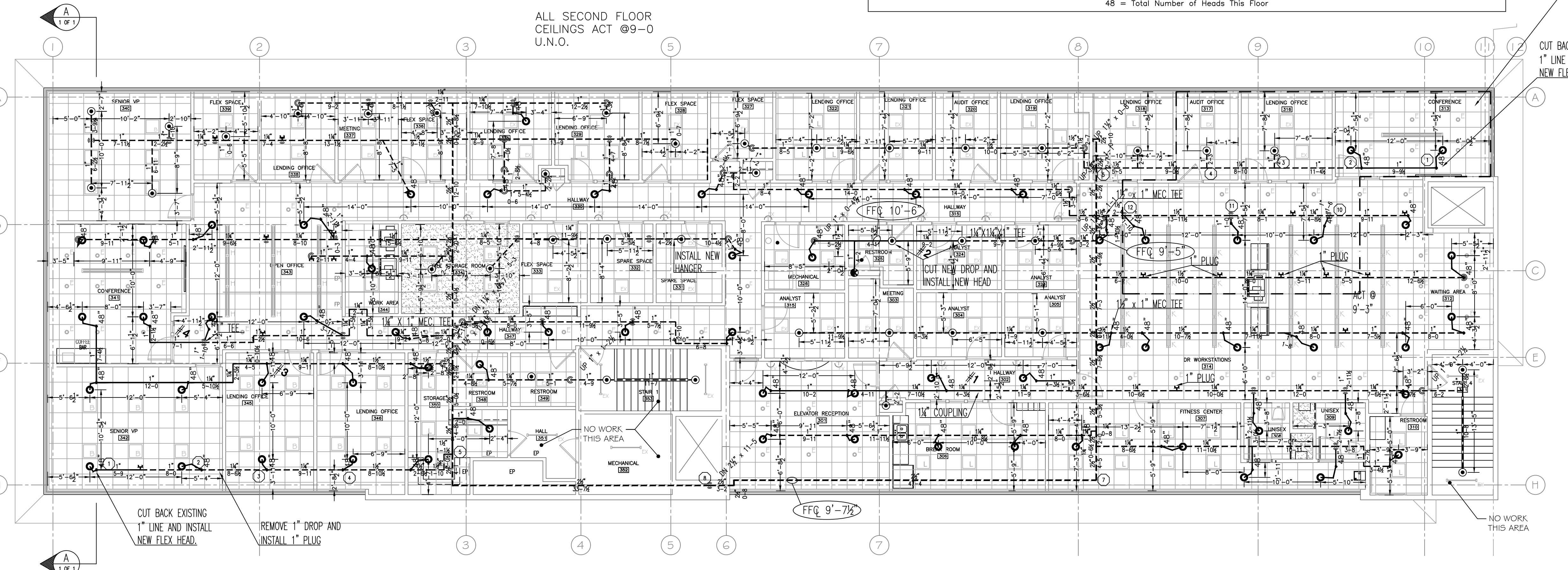
**HYDRAULIC-SYSTEM**  
 THIS BUILDING IS PROTECTED BY A HYDRAULICALLY DESIGNED AUTOMATIC SPRINKLER SYSTEM.  
 LOCATION: THIRD FLOOR  
 No. OF SPRINKLERS: 7  
 BASIS OF DESIGN:  
 1. DENSITY ( GPM/SQ.FT. ) .1  
 2. DESIGNED AREA OF DISCHARGE ( SQ.FT. ) 900  
 SYSTEM DEMAND:  
 1. WATER FLOW RATE ( GPM ) 147.25  
 2. RESIDUAL PRESSURE AT THE BASE OF THE RISER ( PSI ) 66.339

**HYDRAULIC DATA NAMEPLATE**  
 TO BE MOUNTED AT SYSTEM RISER

**SCOPE OF WORK**  
 RENOVATE EXISTING WET SPRINKLER SYSTEM TO ACCOMMODATE NEW FLOOR PLAN ON THIRD FLOOR AND SECOND FLOOR TO LIMIT OF WORK LINE.  
 SPRINKLER PROTECTION FOR ALL OTHER PORTIONS OF THE BUILDING TO REMAIN AS IS. N.I.C.

**GENERAL NOTES**

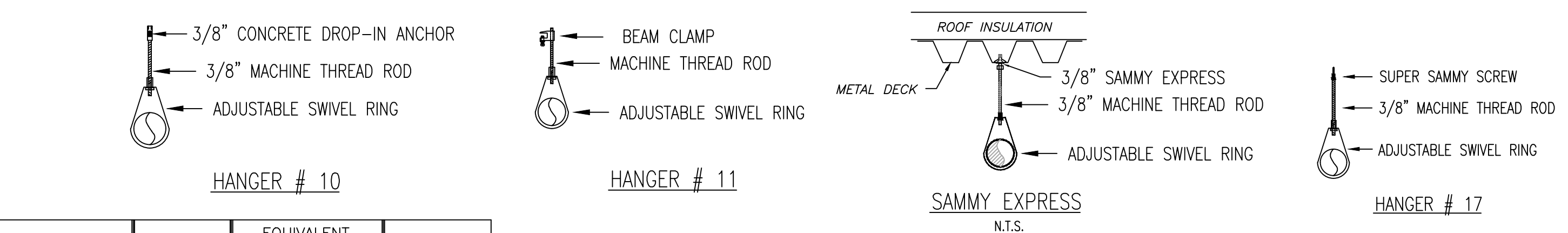
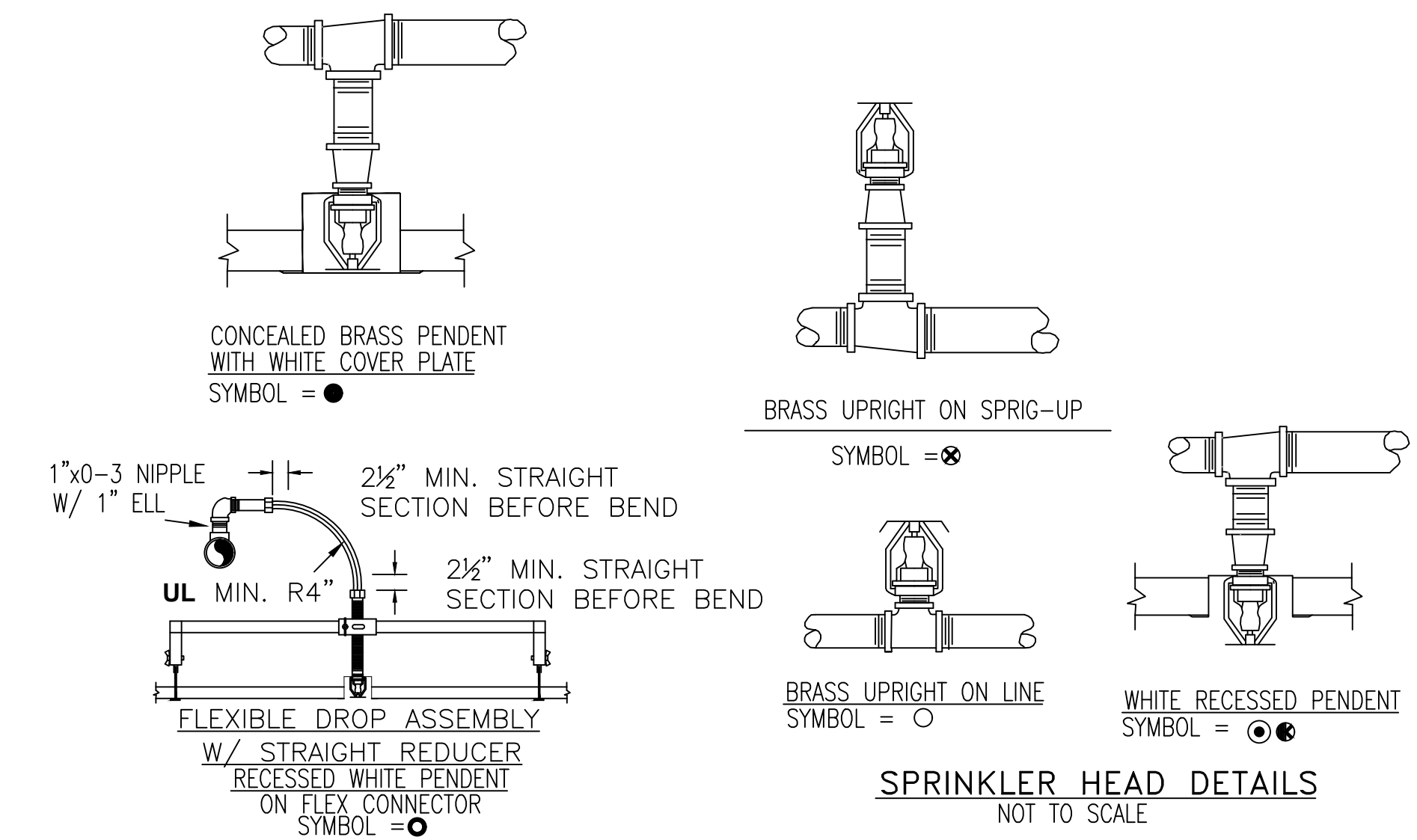
- ALL DIMENSIONS ARE SHOWN FOR GENERAL LOCATION OF SPRINKLER HEADS; PIPING MAY VARY TO SUIT ACTUAL FIELD CONDITIONS.
- OCCUPANCY DESCRIPTION AND CLASSIFICATION:  
 FILE STORAGE - ORDINARY HAZARD GROUP 1  
 ALL OTHER AREAS - LIGHT HAZARD
- ALL WIRING TO BE DONE BY OTHERS
- ALL PAINTING TO BE DONE BY OTHERS
- ACOUSTICAL CEILING TILE (ACT) TO BE LISTED NON-COMBUSTIBLE WITH UL FLAME SPREAD OF LESS THAN 25.
- INDICATES EXISTING STEEL PIPING = - - - - -
- INDICATES NEW STEEL PIPING = \_\_\_\_\_
- N.O. = NORMALLY OPEN  
 N.C. = NORMALLY CLOSED  
 MISCELLANEOUS STORAGE SHALL NOT EXCEED 10'-0" IN HEIGHT
- INDICATES <15 SQ.FT. SHADOW AREA NOT REQUIRING A.S. PROTECTION
- INDICATES FINISH FLOOR UP TO CENTERLINE OF PIPE.
- INDICATES DECK DOWN TO CENTERLINE OF PIPE.
- A.S. = AUTOMATIC SPRINKLER  
 BOD = BOTTOM OF DECK  
 BOJ = BOTTOM OF JOIST  
 BOB = BOTTOM OF BEAM



**FIRE SPRINKLER PLAN - THIRD FLOOR**  
 SCALE: 1/8"=1'-0"  
 AREA PROTECTED: 9820 SQ.FT.  
 FINISH FLOOR ELEVATION : 65.5'  
 COLOR CODE:  
 ALL THIRD FLOOR CEILINGS ACT @9-0 U.N.O.

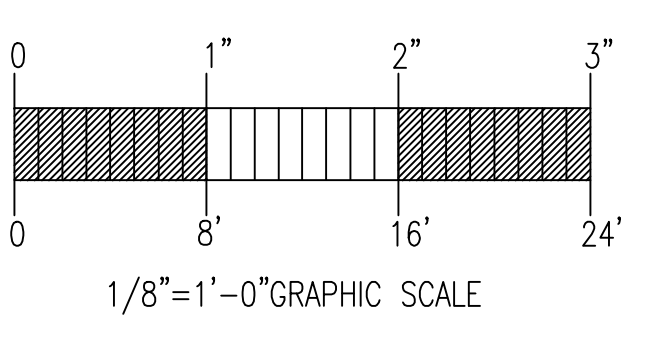
Symbol	Count	Thread	K-Factor	Description	Note
○	65	1/2"	5.6	NEW RELIABLE F1FR56 CHROME RECESSED PENDENT 200' 1/2" QR SIN# RA1414	on Drop
○	38	1/2"	5.6	EXISTING RELIABLE F1FR56 CHROME RECESSED PENDENT 200' 1/2" QR SIN# RA1414	on Drop
○	1	1/2"	5.6	NEW RELIABLE F1FR56 BRASS UPRIGHT 200' SIN# RA1425	on Sprig
●	1	1/2"	5.6	NEW RELIABLE F1FR56 CHROME RECESSED PENDENT 200' 1/2" QR SIN# RA1414	on Drop

105 = Total Number of Heads This Floor



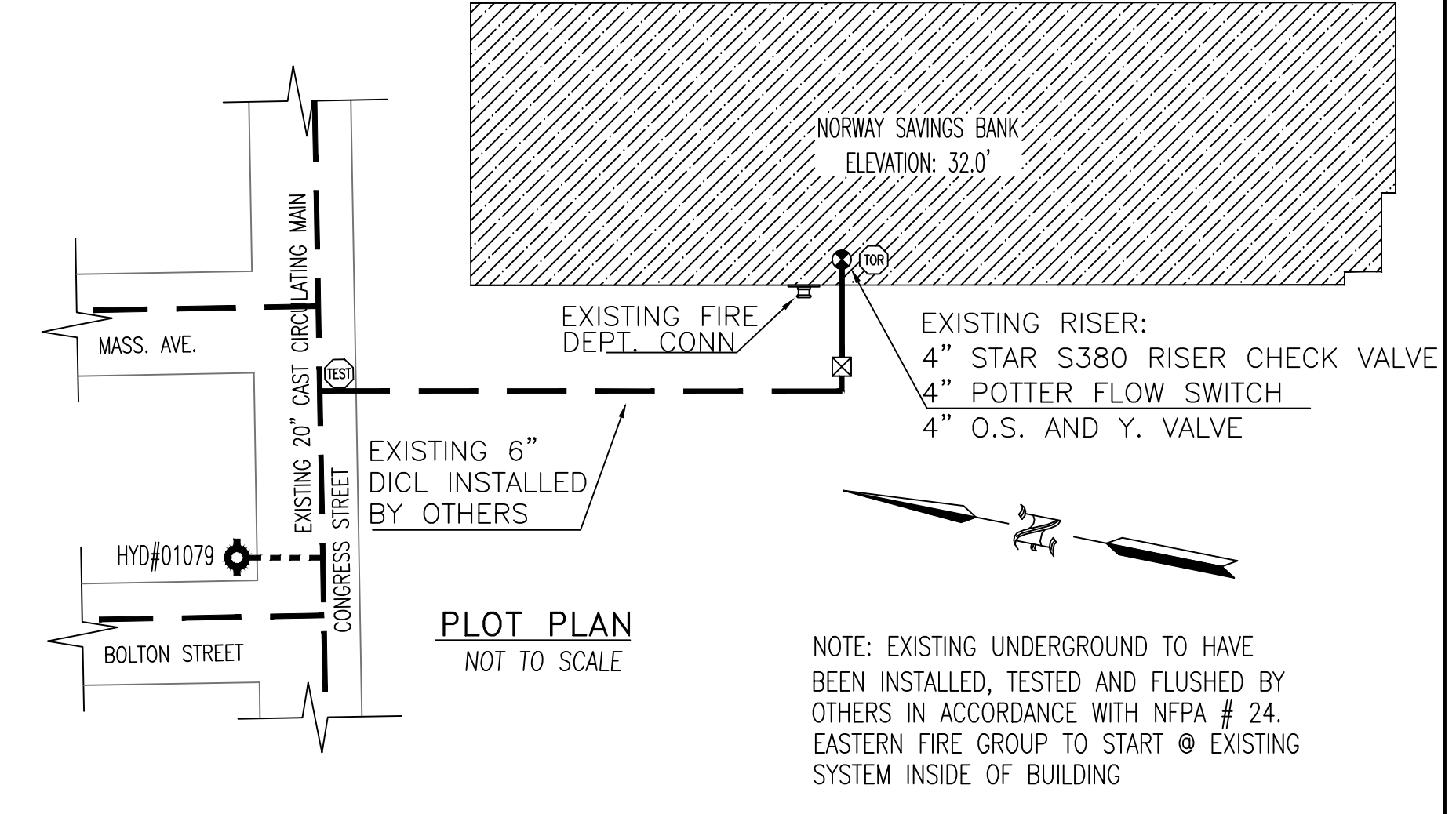
LENGTH OF FLEXIBLE HOSE INCHES	OUTLET SIZE INCHES	EQUIVALENT LENGTH OF 1" SCH'D 40 PIPE WHERE C=120 FEET	MAXIMUM NUMBER OF BENDS
31"	3/4" STRAIGHT / 3/4" 90 ELL	53.8' / 53.8'	2
36"	3/4" STRAIGHT / 3/4" 90 ELL	63.7' / 63.7'	2
48"	3/4" STRAIGHT / 3/4" 90 ELL	87.6' / 85.8'	3
60"	3/4" STRAIGHT / 3/4" 90 ELL	112.2' / 108.4'	4
72"	3/4" STRAIGHT / 3/4" 90 ELL	136.5' / 131.1'	4

SERIES AH1 BRAIDED FLEXIBLE DROP



**WATER FLOW TEST**

STATIC : 100 PSI  
 RESIDUAL: 90 PSI  
 FLOW : 500 GPM  
 ELEVATION 32.0'  
 DATE : N/A  
 WATER DATA PROVIDED BY: EASTERN FIRE



NOTE: EXISTING UNDERGROUND TO HAVE BEEN INSTALLED, TESTED AND FLUSHED BY OTHERS IN ACCORDANCE WITH NFPA # 24. EASTERN FIRE GROUP TO START @ EXISTING SYSTEM INSIDE OF BUILDING

GENERAL NOTES	DATE	REVISIONS	REQUIRED APPROVALS	FIRE SPRINKLER PLANS & DETAILS
SPRINKLER SYSTEM INSTALLATION TO COMPLY WITH NFPA PAMPHLET # 13			OWNER / ARCHITECT STATE FIRE MARSHAL PORTLAND FIRE DEPARTMENT	DWG. NO. 1 OF 1
NEW BRANCH LINE PIPING TO BE BLACK SCHEDULE 40 JOINED BY THREADED DUCTILE IRON FITTINGS			DRAWN BY JML NICET LEVEL CHECKED BY GRD NICET LEVEL III CONTRACTOR LICENSE # 101 CONTRACTOR RMS # 291	JOB NUMBER 5582-SPN-17
OWNER TO PROVIDE SUFFICIENT HEAT THROUGHOUT BUILDING TO PREVENT FREEZING OF WATER FILLED SPRINKLER PIPING AND EQUIPMENT. ( 40° F )				SCALE AS NOTED
				DATE 04/25/2014

**NORWAY SAVINGS BANK**  
 1200 CONGRESS STREET, PORTLAND, ME

CONTRACT WITH: HEBERT CONSTRUCTION

**EASTERN FIRE PROTECTION**  
 AUBURN/LEWISTON INDUSTRIAL AIRPARK, AUBURN, MAINE 04210