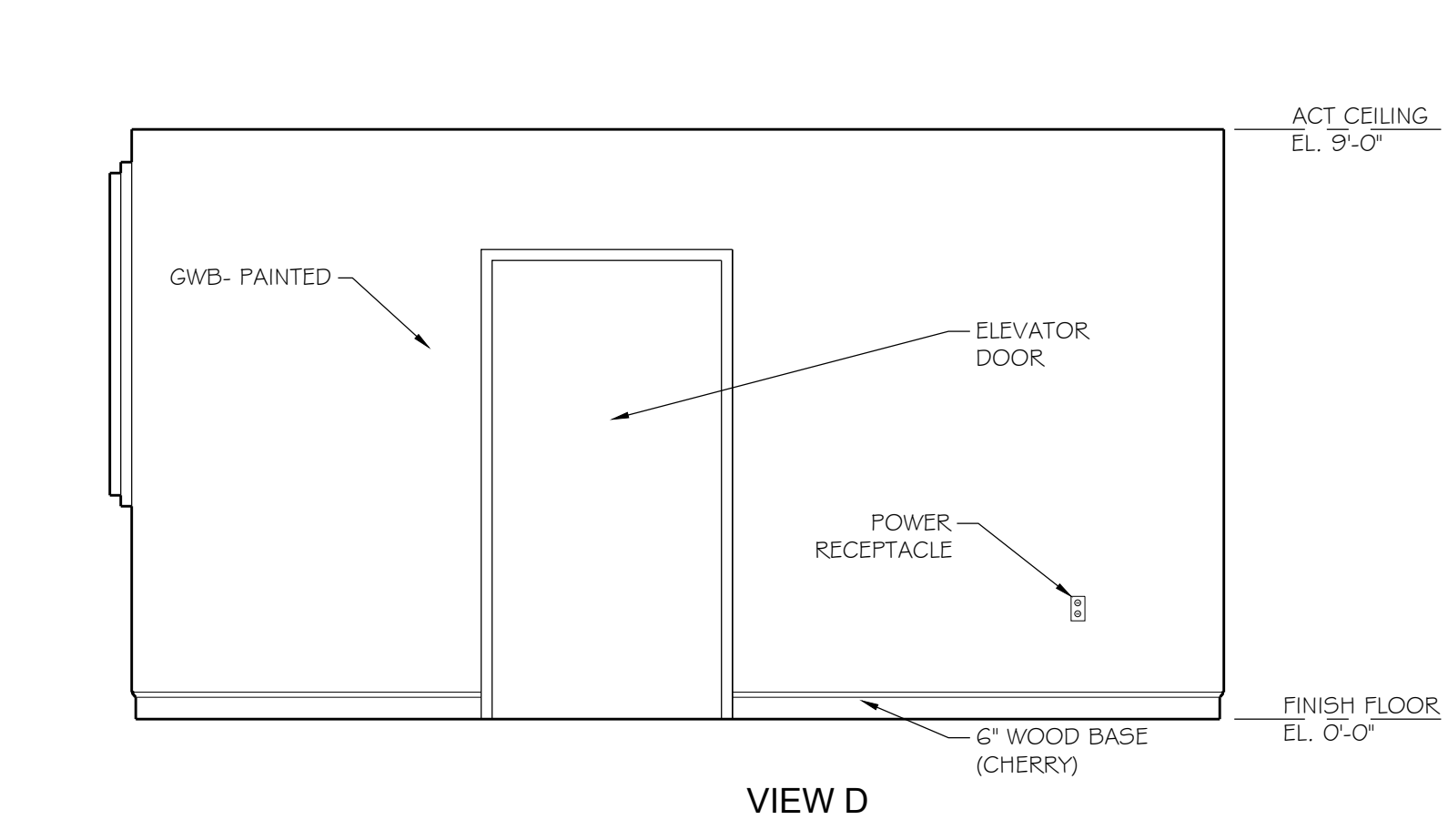
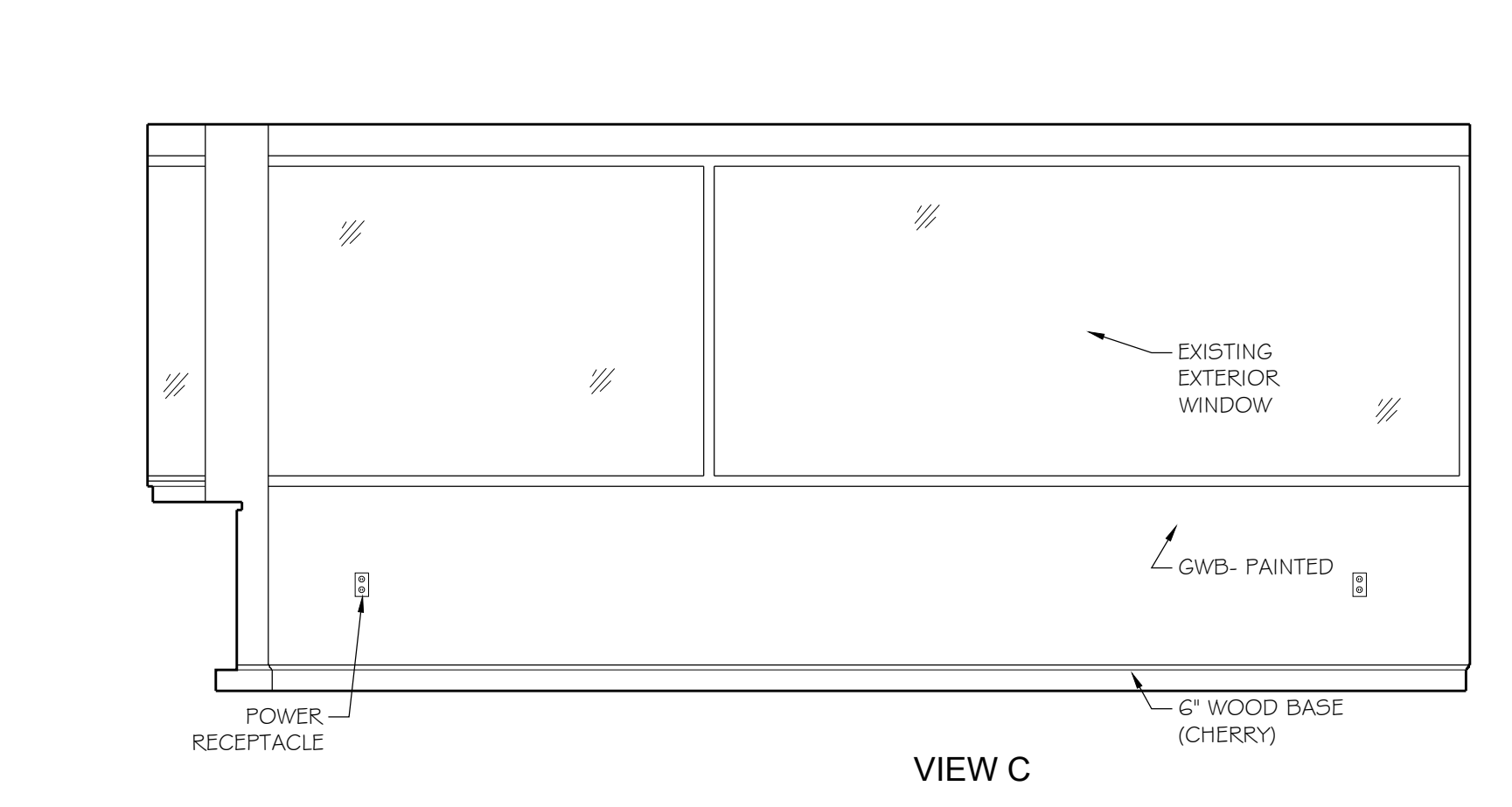
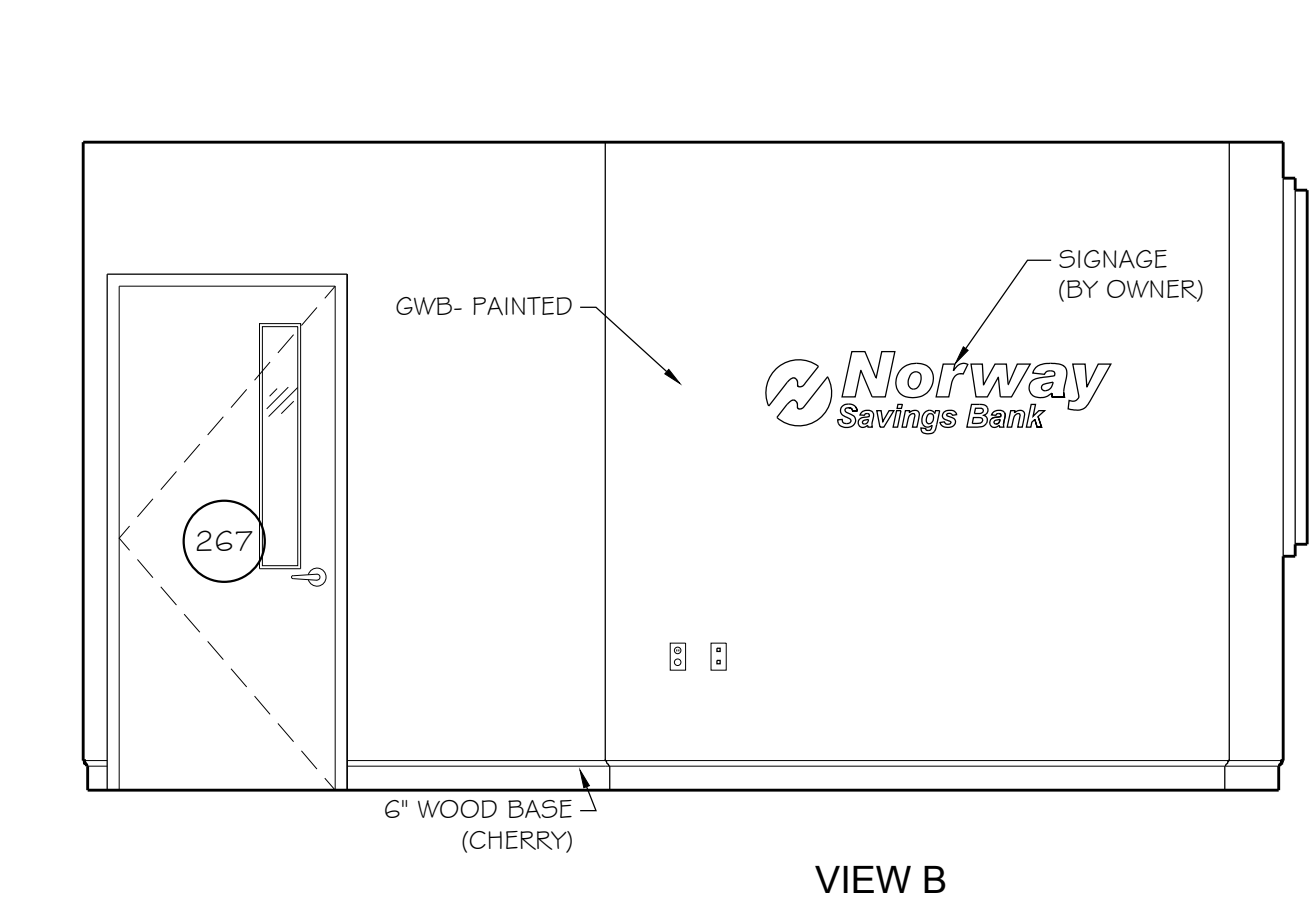
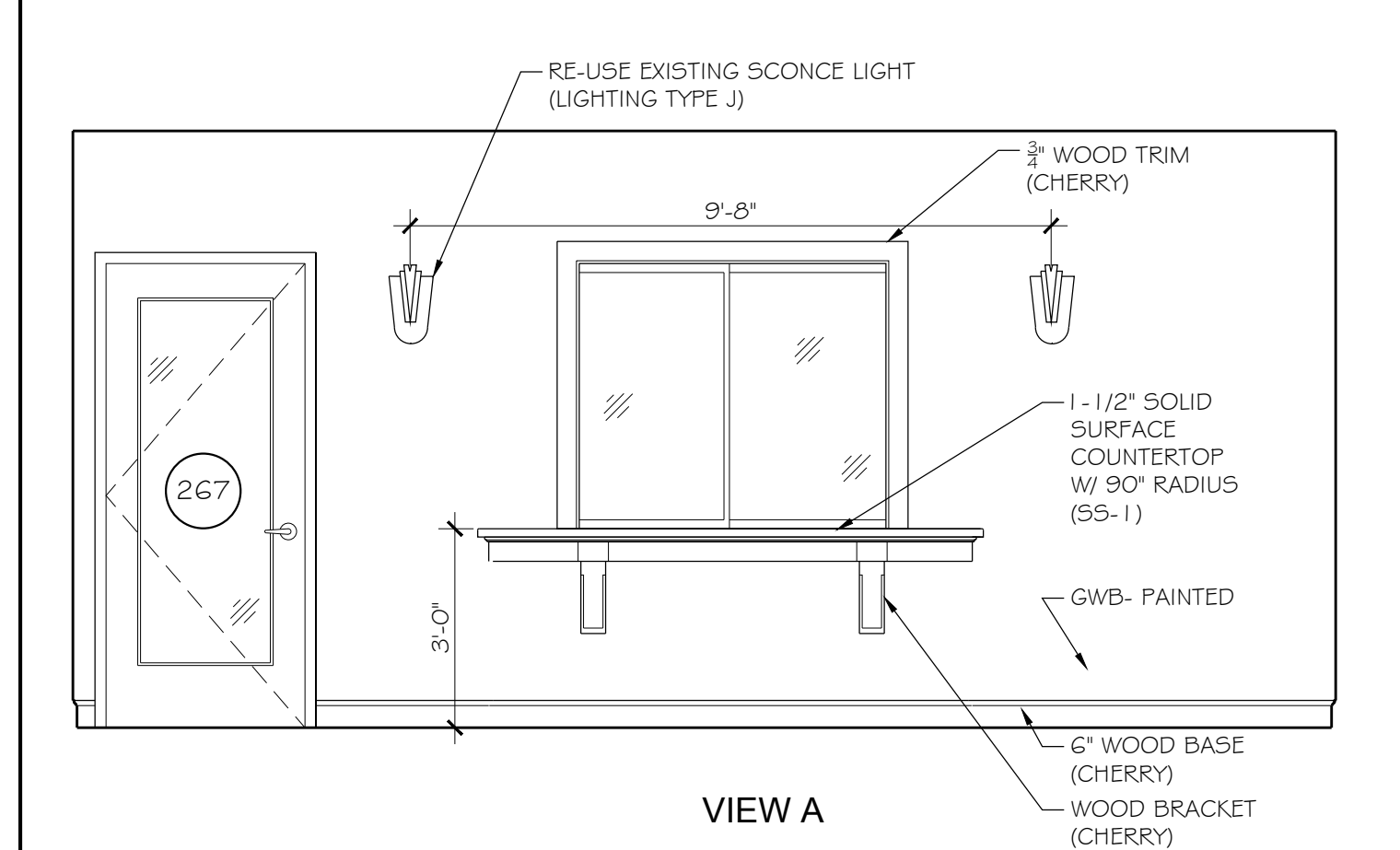


10 DR WORKSTATIONS CABINET ELEV. (ROOM #314)
A103 SCALE: 3/8" = 1'-0"

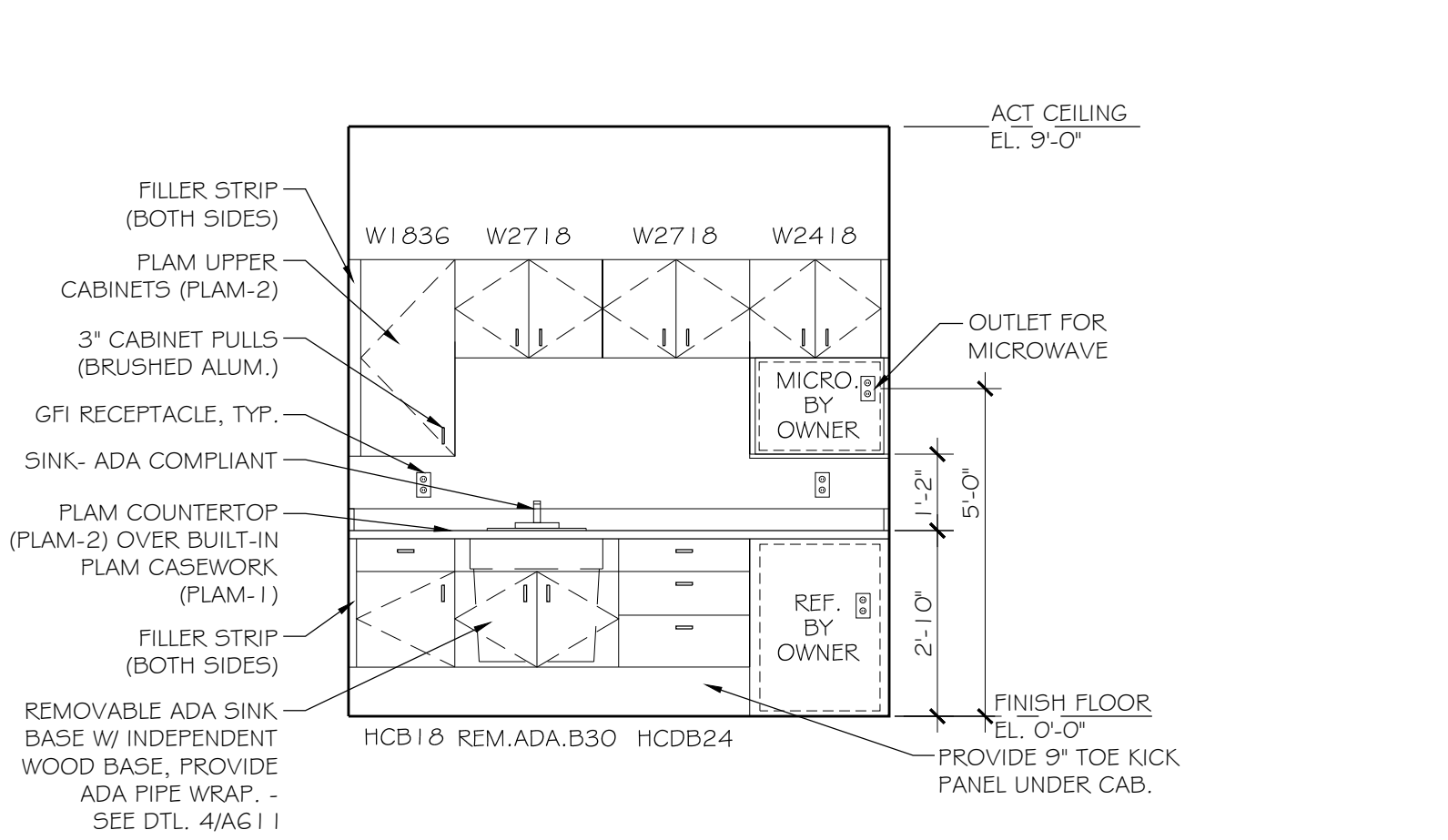
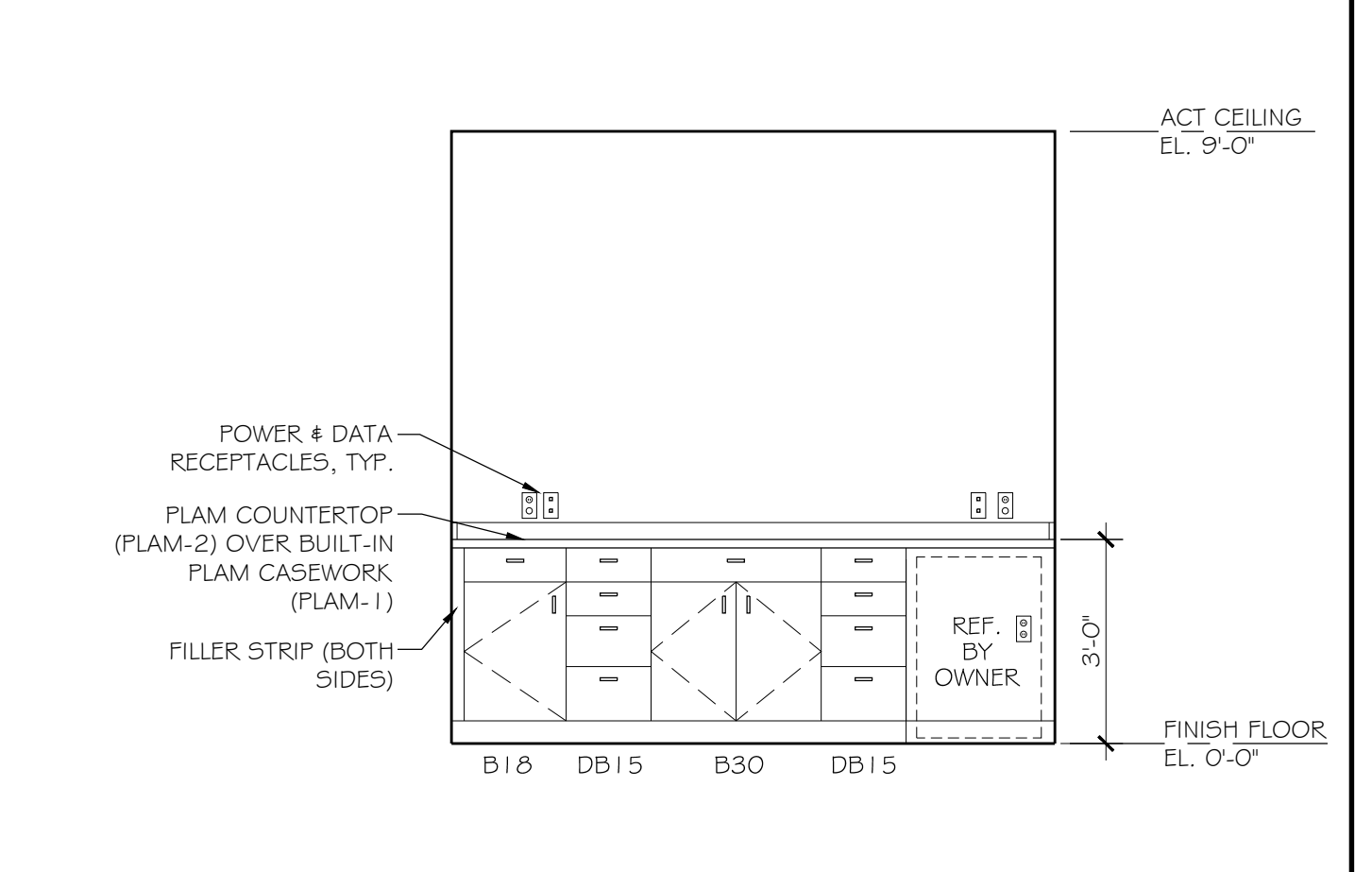
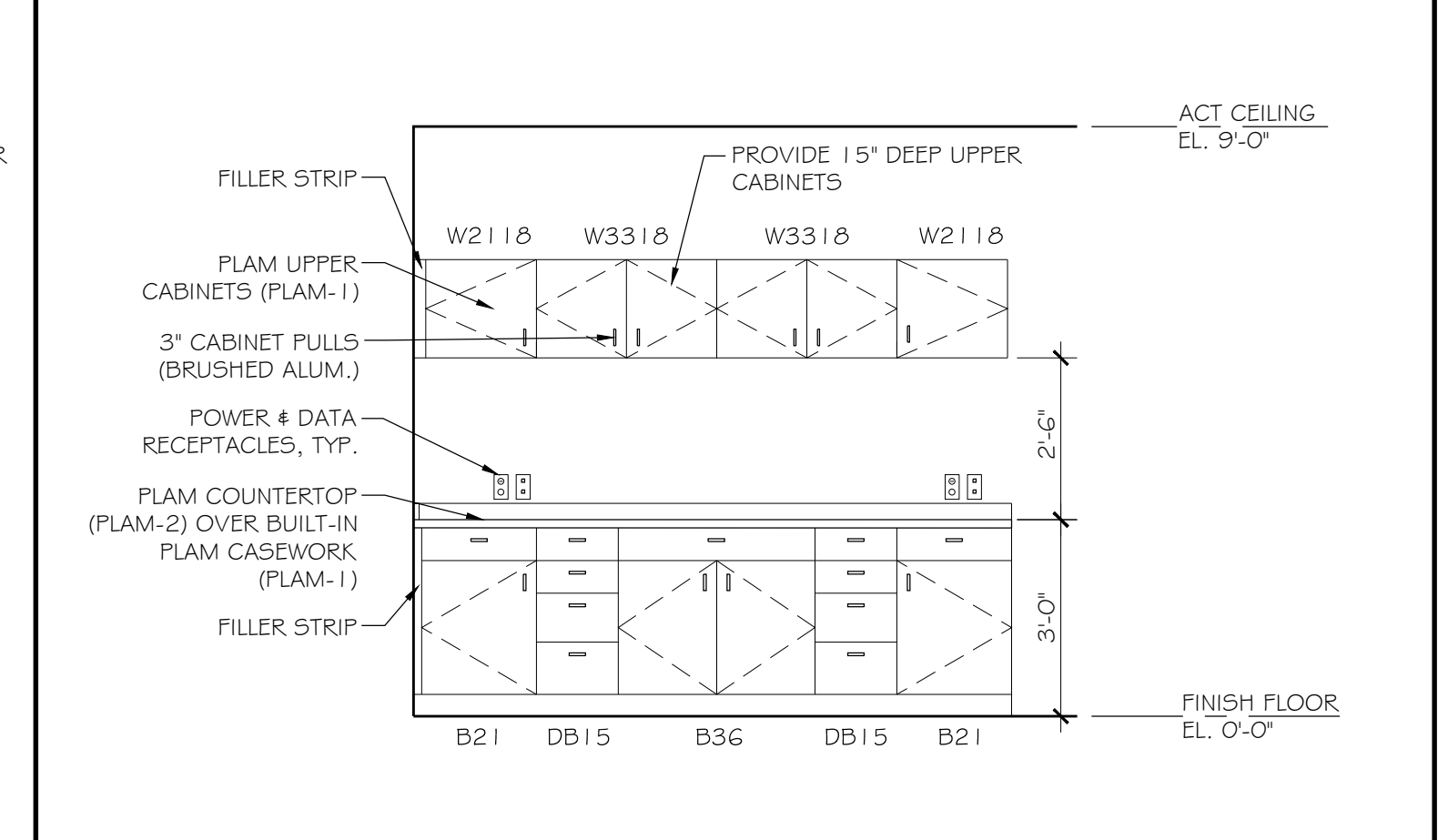
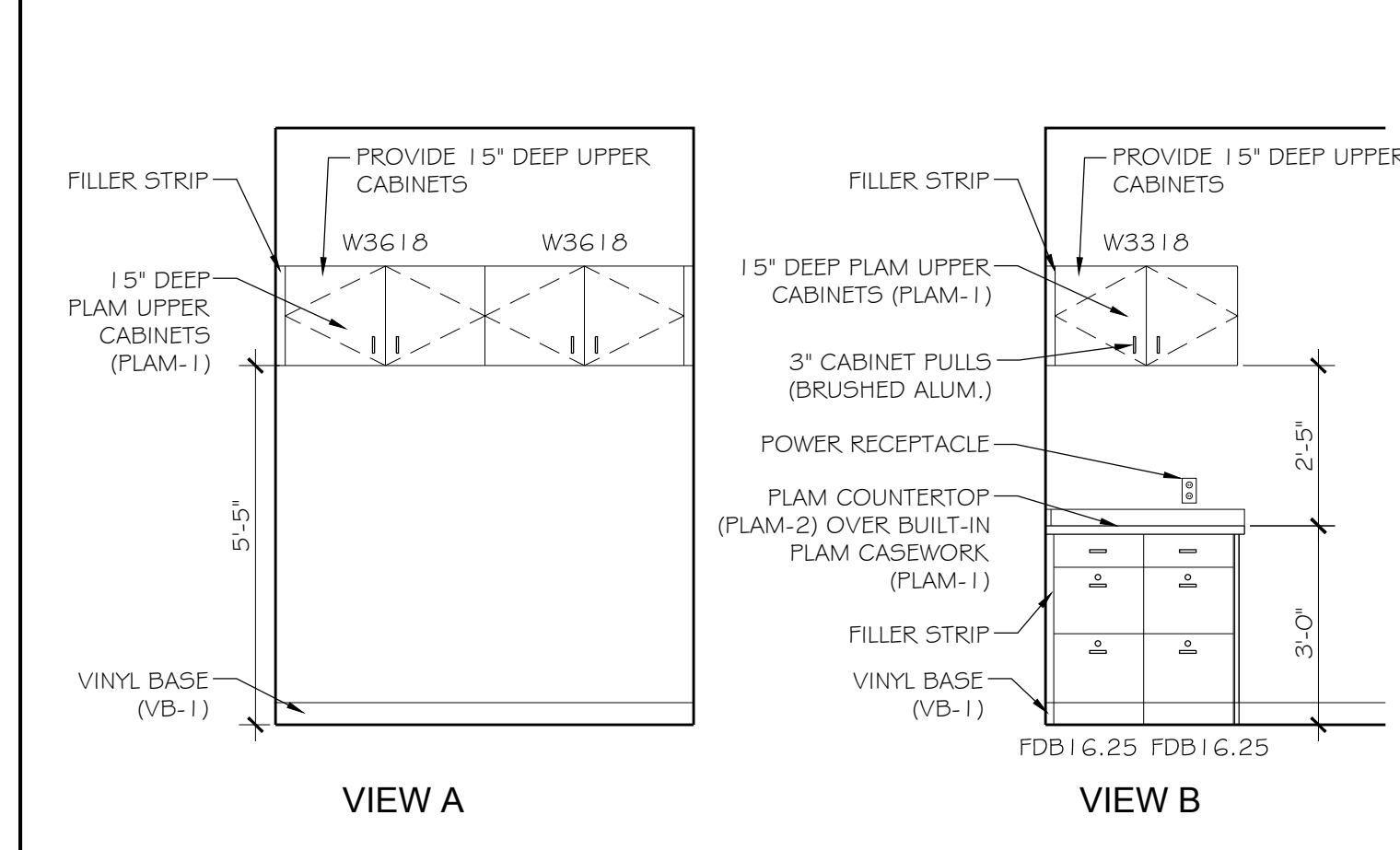
9 CONF. ELEV. (ROOM #341)
A103 SCALE: 3/8" = 1'-0"

8 COPY AREA ELEV. (ROOM #223)
A103 SCALE: 3/8" = 1'-0"

7 BREAK ROOM ELEV. (ROOM #306)
A103 SCALE: 3/8" = 1'-0"



6 INTERIOR ELEVATIONS- ELEVATOR RECEPTION (ROOM #301)
A103 SCALE: 3/8" = 1'-0"

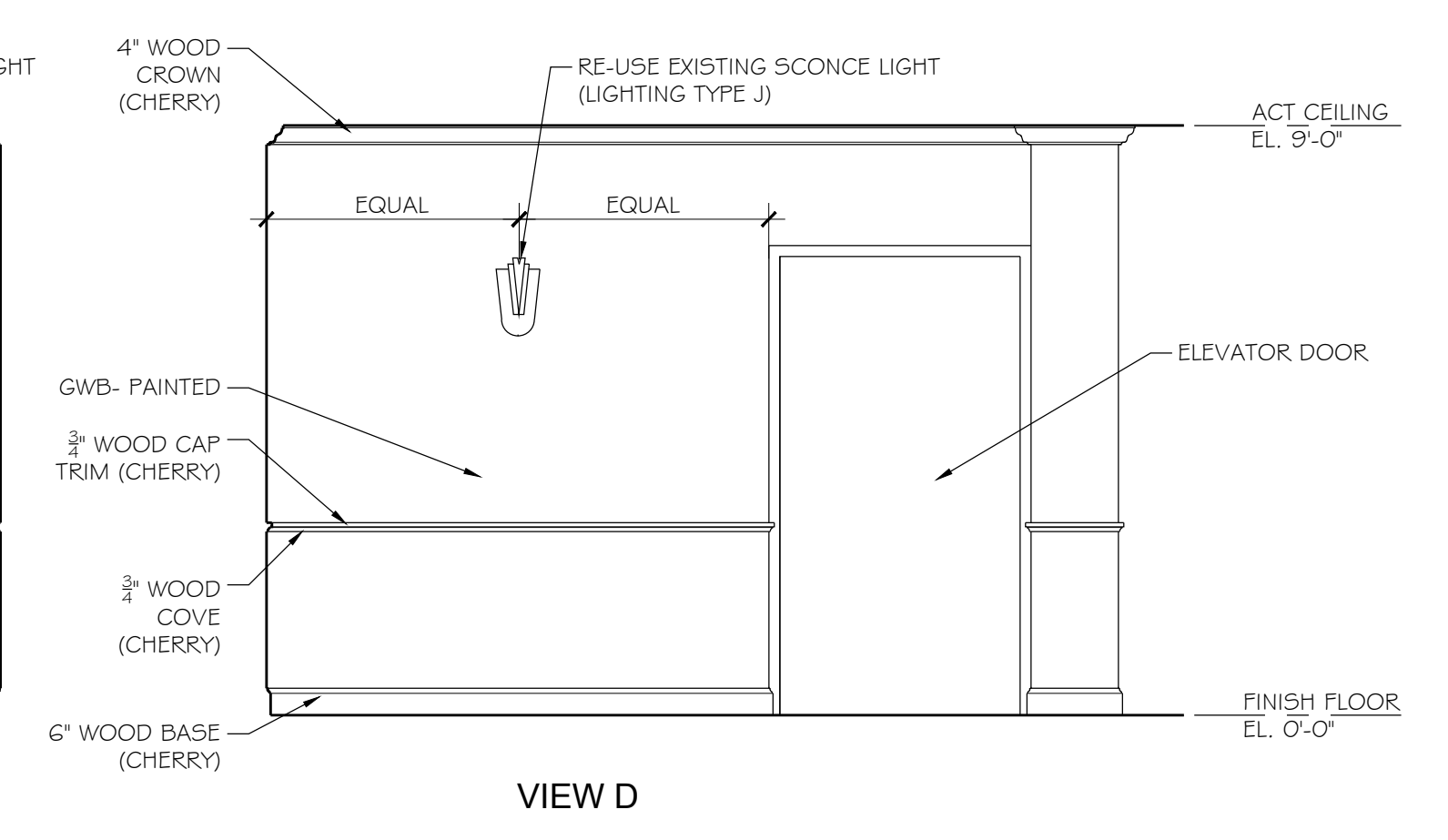
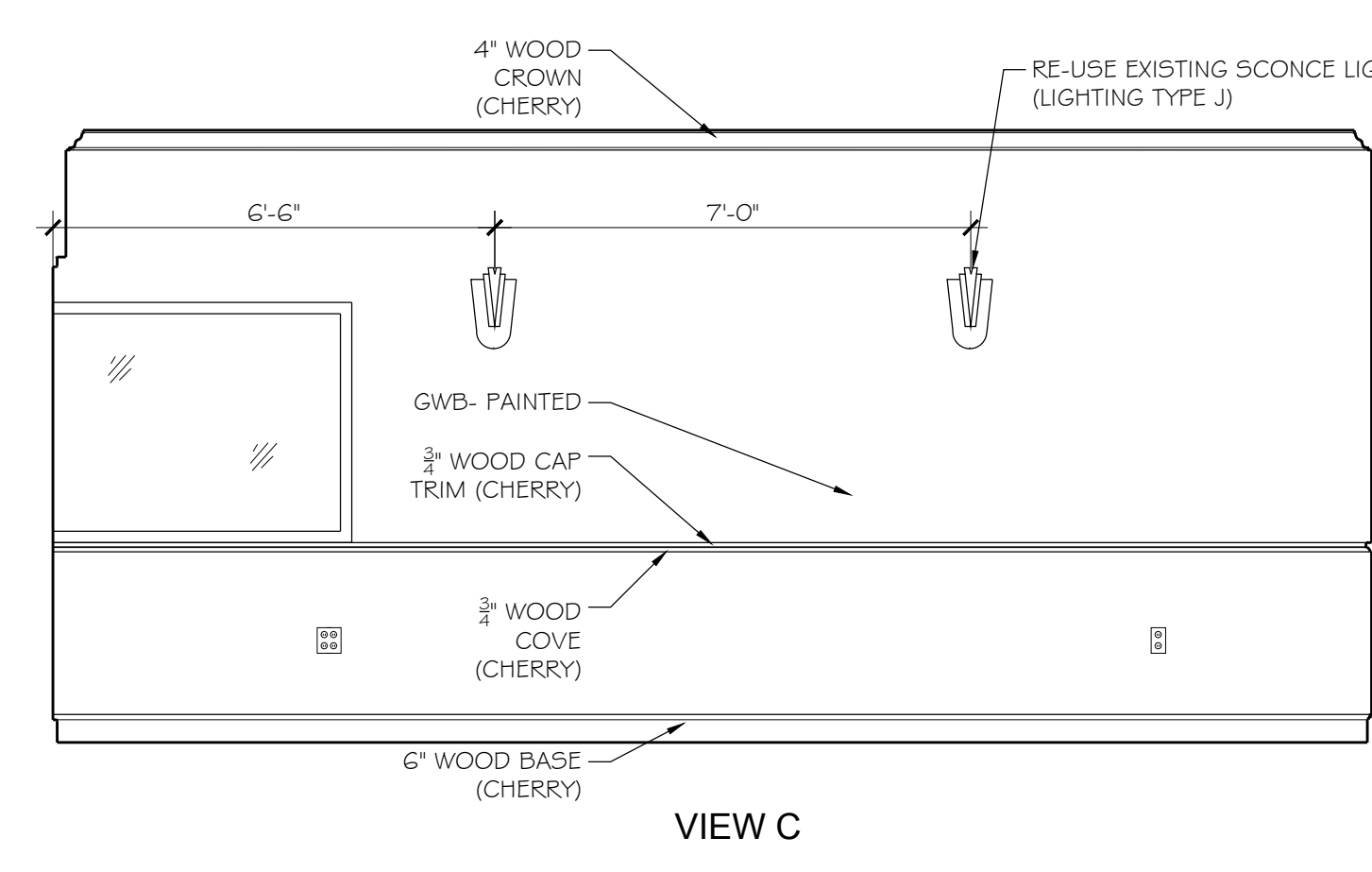
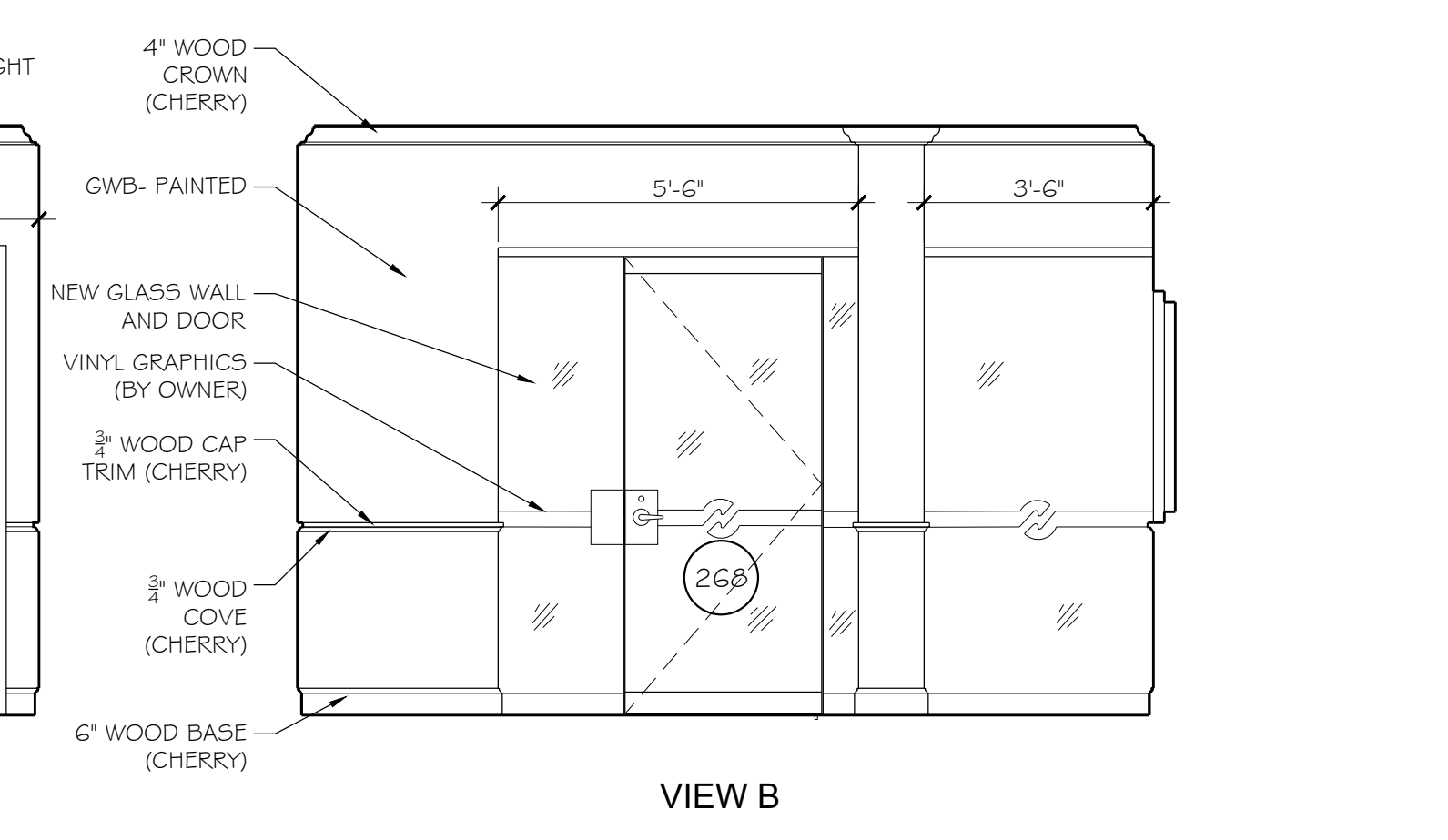
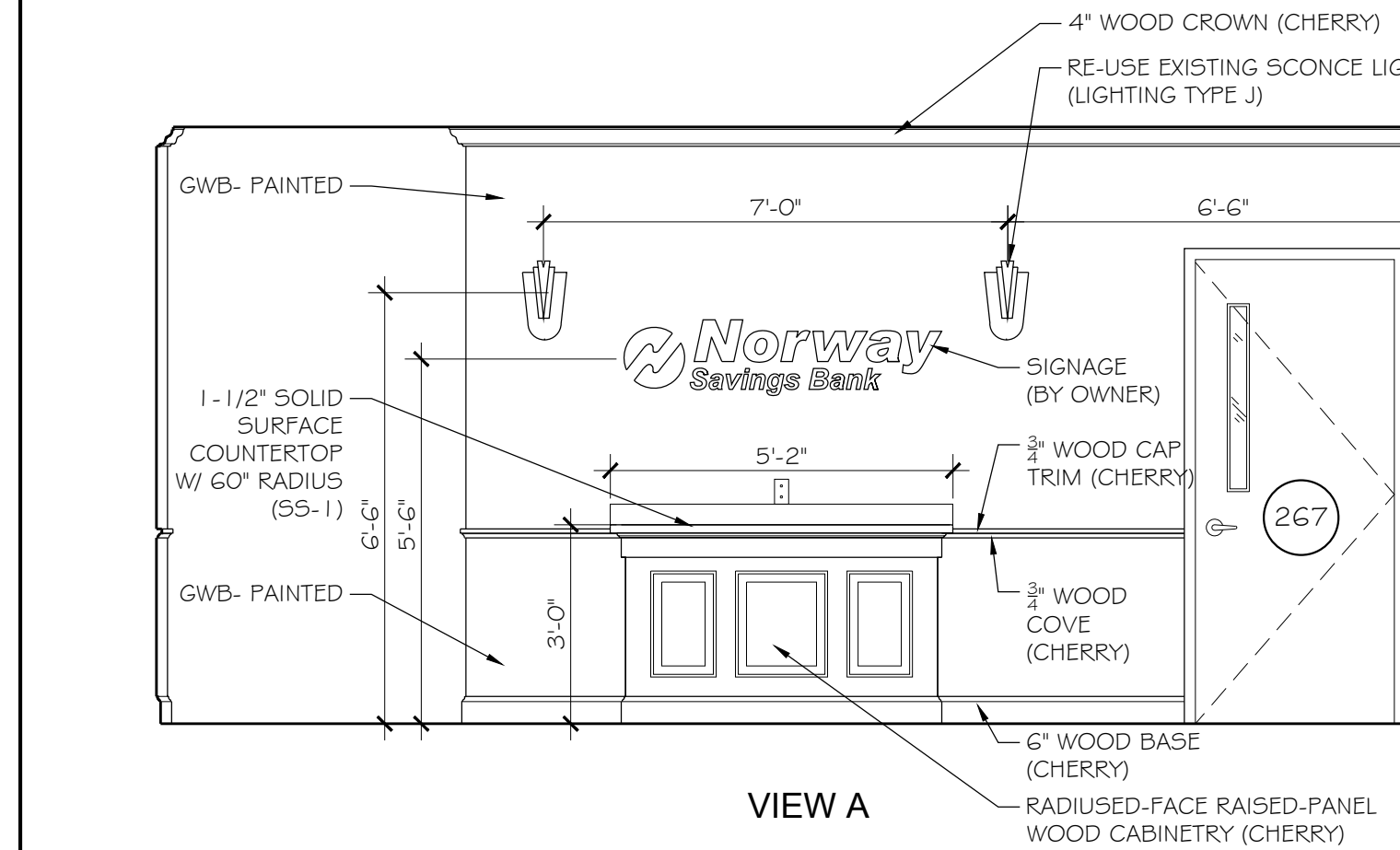


5 SECURE STORAGE ELEV. (ROOM #224)
A102 SCALE: 3/8" = 1'-0"

4 WORK AREA ELEV. (ROOM #244)
A102 SCALE: 3/8" = 1'-0"

3 PREP AREA ELEV. (ROOM #242)
A102 SCALE: 3/8" = 1'-0"

2 BREAK ROOM ELEV. (ROOM #203)
A102 SCALE: 3/8" = 1'-0"



1 INTERIOR ELEVATIONS- RECEPTION LOBBY (ROOM #201)
A102 SCALE: 3/8" = 1'-0"

PLATZ ASSOCIATES
Architects - Engineers
Construction Managers
Two Great Falls Plaza, Auburn, Maine 04210
Tel 207-784-2841
Fax 207-784-3856

Proposed Renovation of:
NORWAY SAVINGS BANK
1200 Congress Avenue
Portland, Maine

SEAL
LICENSED ARCHITECT
TRAVIS R. NADEAU
4038
STATE OF MAINE

DRAWING STATUS
 OFFICE REVIEW
 CLIENT REVIEW
 PERMIT REVIEW
 BID SET
 CONTRACT DRAWING
 CONSTRUCTION

No drawing shall be recognized as a construction document unless it bears a blue inked registration seal.

SHEET TITLE
INTERIOR ELEVATIONS

JOB NO.
201512

DRAWN BY
EBJ

CHECKED BY
TRN

SCALE
AS NOTED

ORIGINAL DATE
12-29-2016

REVISION DATE

SHEET
A610

INSB-1200 CONGRESS CORNERS ARCH-PLANS 1210-FLOORPLAN1.DWG