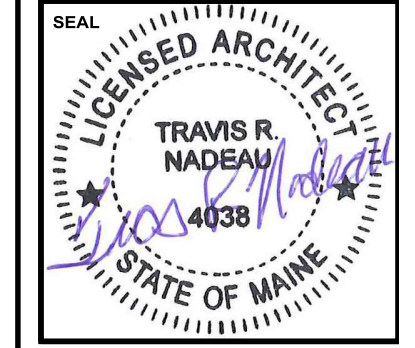


Proposed Renovation of:
NORWAY SAVINGS BANK
 1200 Congress Avenue
 Portland, Maine



DRAWING STATUS

- OFFICE REVIEW
- CLIENT REVIEW
- PERMIT REVIEW
- BID SET
- CONTRACT DRAWING
- CONSTRUCTION

No drawing shall be recognized as a construction document unless it bears a blue inked registration seal.

SHEET TITLE
FIRST FLOOR REFLECTED CEILING PLAN

JOB NO.
201512

DRAWN BY
EBJ

CHECKED BY
TRN

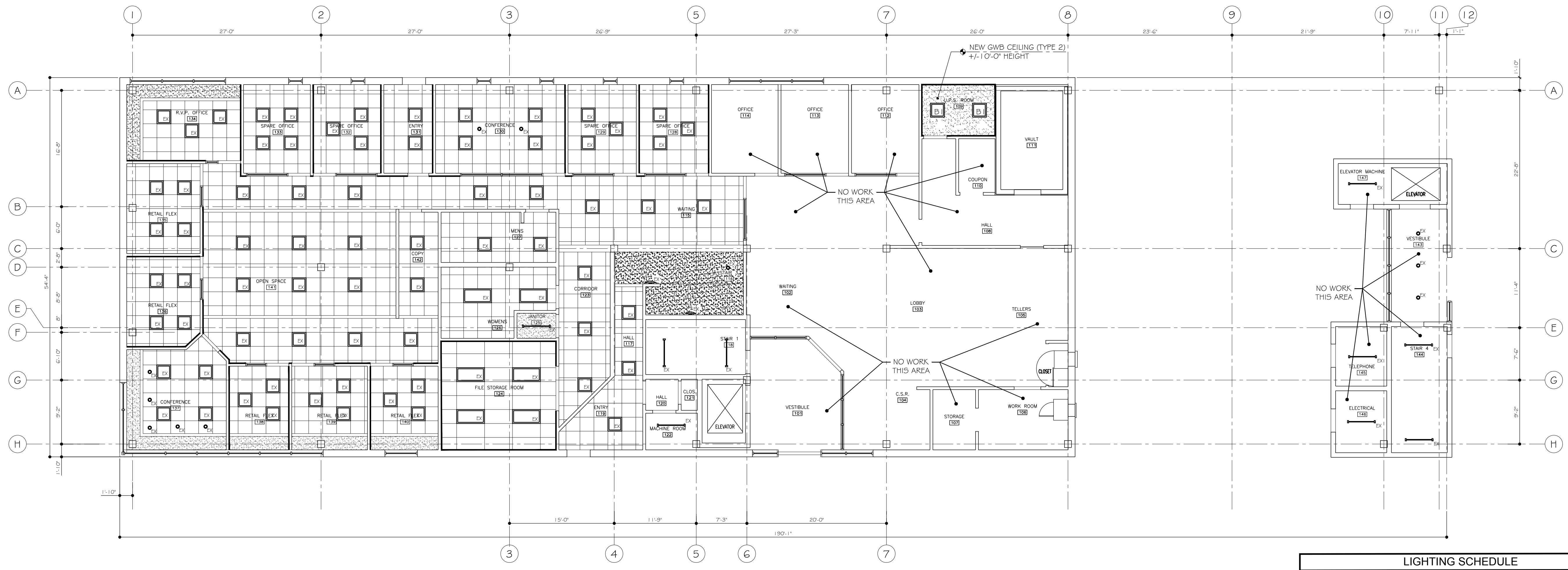
SCALE
AS NOTED

ORIGINAL DATE
12-29-2016

REVISION DATE

SHEET

A401



LIGHTING SCHEDULE

	LIGHTING FIXTURE TYPE A = 2' X 4' RECESSED LED SPEC: LITHONIA LIGHTING #2VTL4-40L-ADP-EZ1-UP635 2
	LIGHTING FIXTURE TYPE AI = 2' X 4' SURFACE-MOUNTED LED 2 SPEC: LITHONIA LIGHTING #2VTL4-40L-ADP-EZ1-UP635-DGA24FSVT
	LIGHTING FIXTURE TYPE B = 2'X2' RECESSED LED 2 SPEC: LITHONIA LIGHTING #2VTL2-33L-ADP-EZ1-UP635
	LIGHTING FIXTURE TYPE BI = 2'X2' RECESSED LED 2 SPEC: LITHONIA LIGHTING #2VTL2-33L-ADP-EZ1-UP635-DGA24FSVT
	LIGHTING FIXTURE TYPE C = INTERIOR WALL-MOUNTED LED SCENCE SPEC: NOT USED 2
	LIGHTING FIXTURE TYPE D = INTERIOR WALL-MOUNTED LED SCENCE SPEC: NOT USED 2
	LIGHTING FIXTURE TYPE E = 4' RECESSED INTERIOR LED DOWNLIGHT 2 SPEC: ATLANTIC LIGHTING #LED4-DLM20-35K-U-LDE-4LED 10-WH
	LIGHTING FIXTURE TYPE F = 4' RECESSED ADJUSTABLE LED DOWNLIGHT 2 SPEC: ATLANTIC #LED4ADJ-LVR20-35K-I-2WR4IADJ-WH
	LIGHTING FIXTURE TYPE G = 48' INTERIOR STRIP LIGHT SPEC: LUMAX #UCM114-EG1-IPC-IS-SW
	LIGHTING FIXTURE TYPE H = 48' INTERIOR UPDOWN LINEAR LIGHT 2 SPEC: LUMENWORK #SNIPGL-PRG-LED-80-750-500-35-4-LINW-D-I-53WAC3G-W
	LIGHTING FIXTURE TYPE J = RE-USE EXISTING INTERIOR WALL-MOUNTED SCENCE SPEC: EXISTING FIXTURES RETAINED FROM SECOND FLOOR
	LIGHTING FIXTURE TYPE K = RE-USE EXISTING 48' UPDOWN LINEAR LIGHT SPEC: EXISTING FIXTURES RETAINED FROM THIRD FLOOR
	LIGHTING FIXTURE TYPE L = RE-USE EXISTING 2'X2' RECESSED FIXTURES SPEC: EXISTING FIXTURES RETAINED FROM THE SECOND & THIRD FLOORS

1 FIRST FLOOR REFLECTED CEILING PLAN
 SCALE: 1/8" = 1'-0"