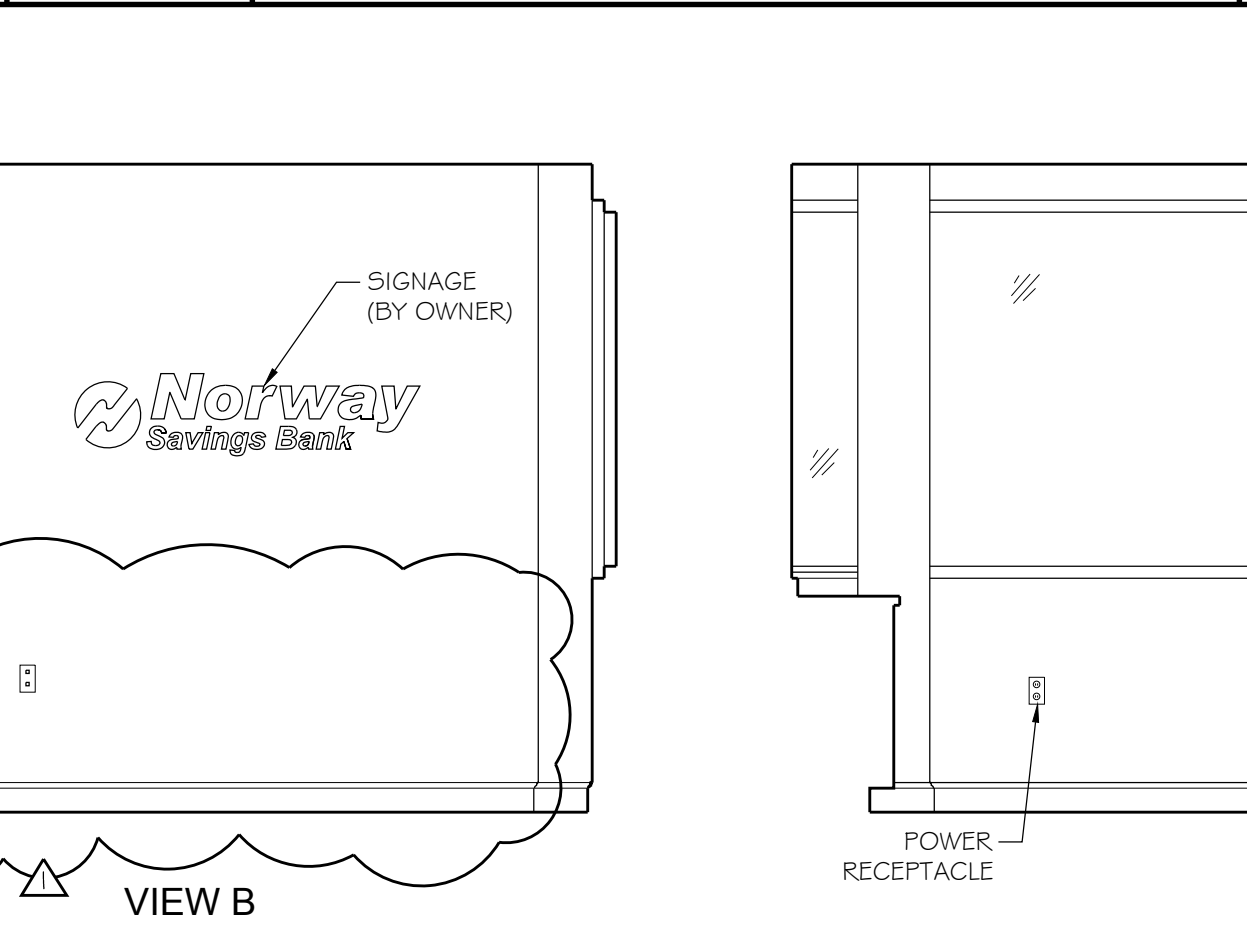
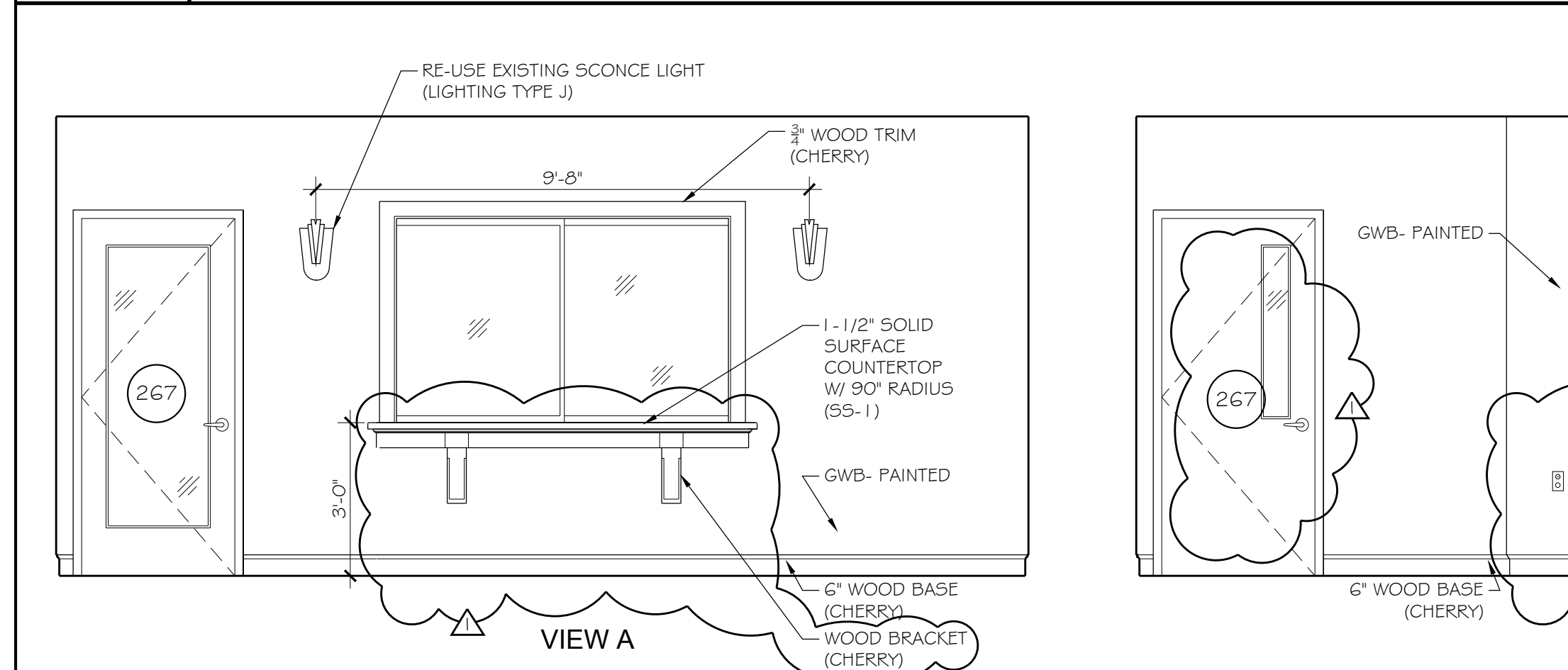


**10** DR WORKSTATIONS CABINET ELEV. (ROOM #314)  
A103 SCALE: 3/8" = 1'-0"

**9** CONF. ELEV. (ROOM #341)  
A103 SCALE: 3/8" = 1'-0"

**8** COPY AREA ELEV. (ROOM #223)  
A103 SCALE: 3/8" = 1'-0"

**7** BREAK ROOM ELEV. (ROOM #306)  
A103 SCALE: 3/8" = 1'-0"

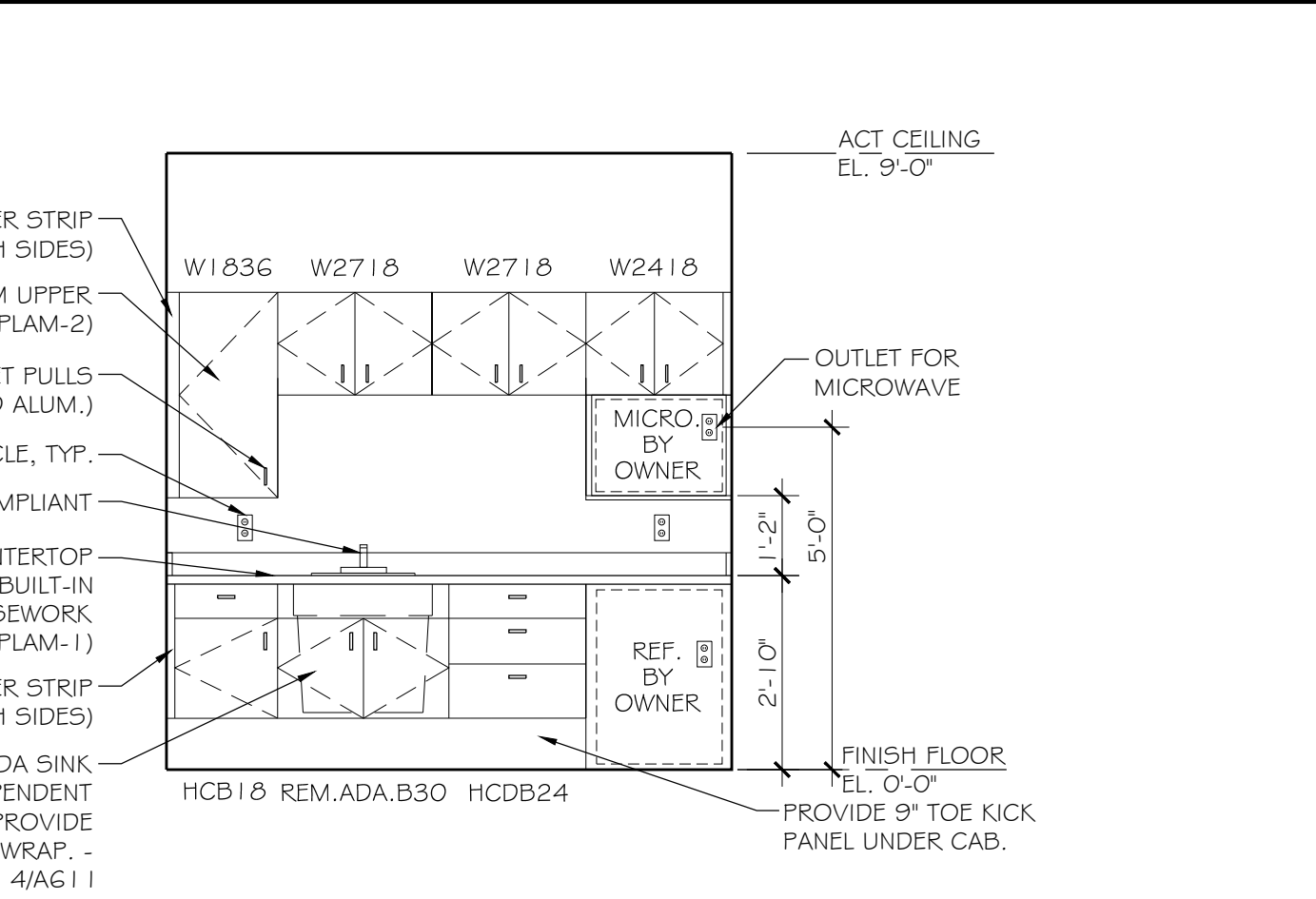
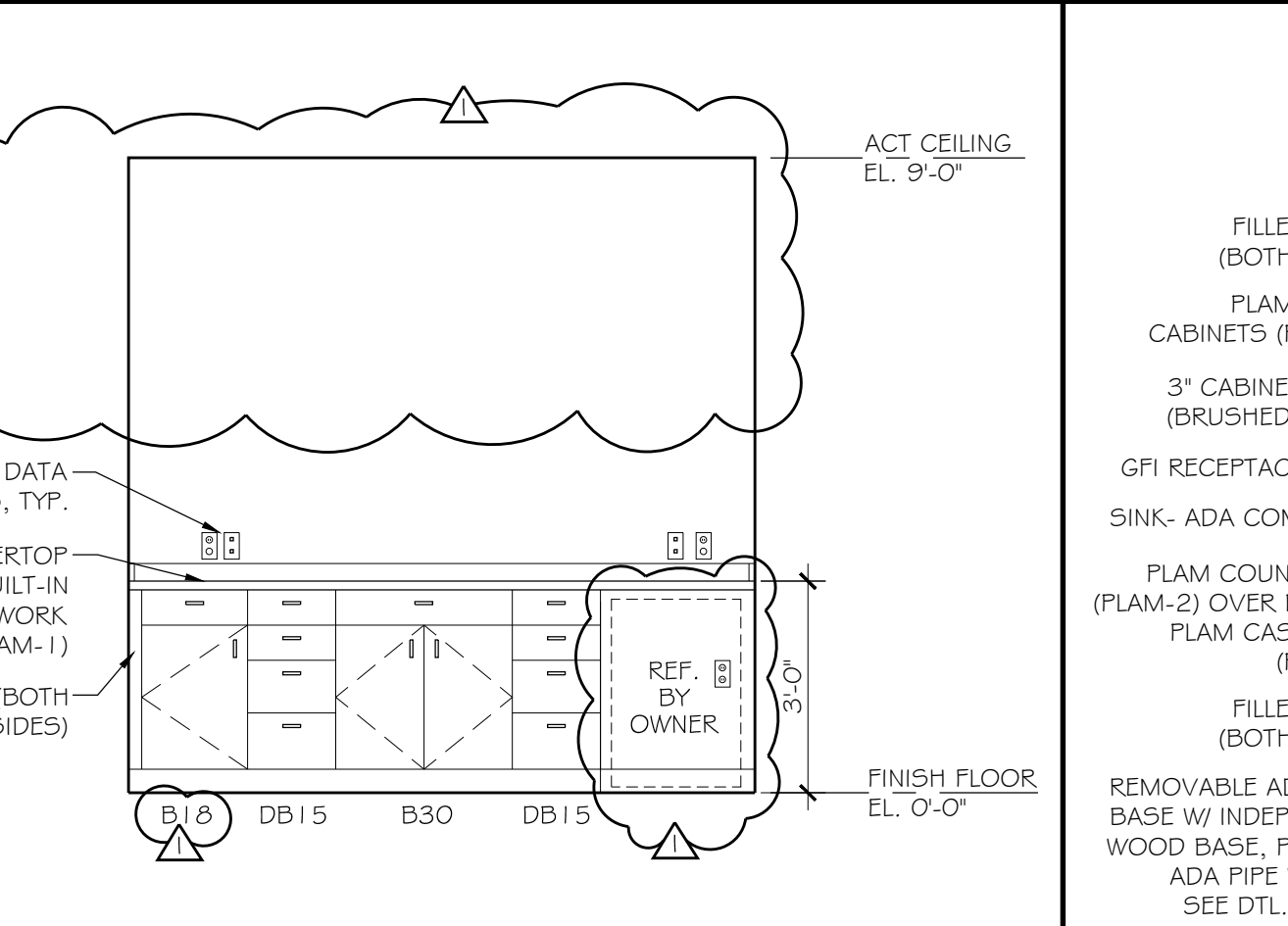
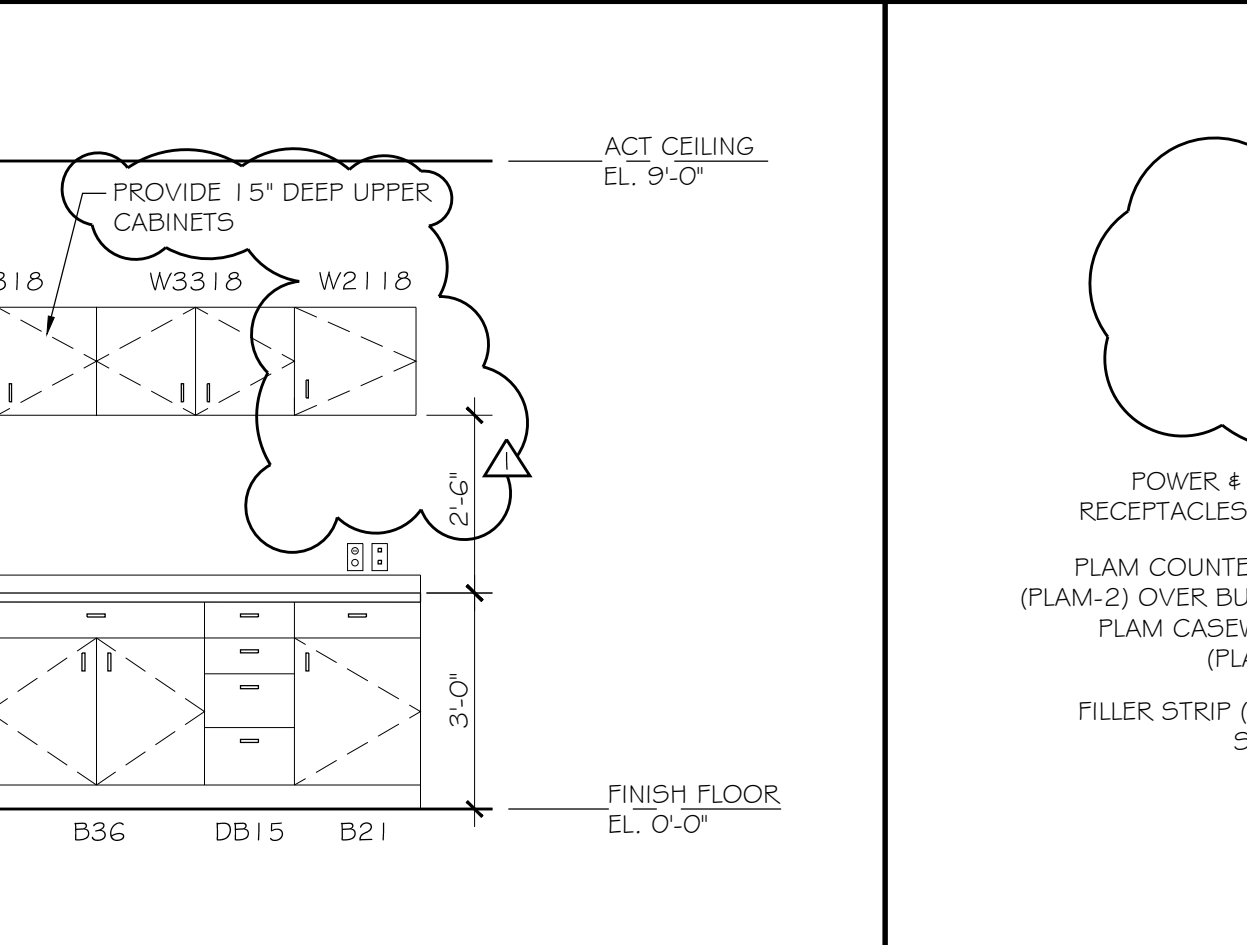
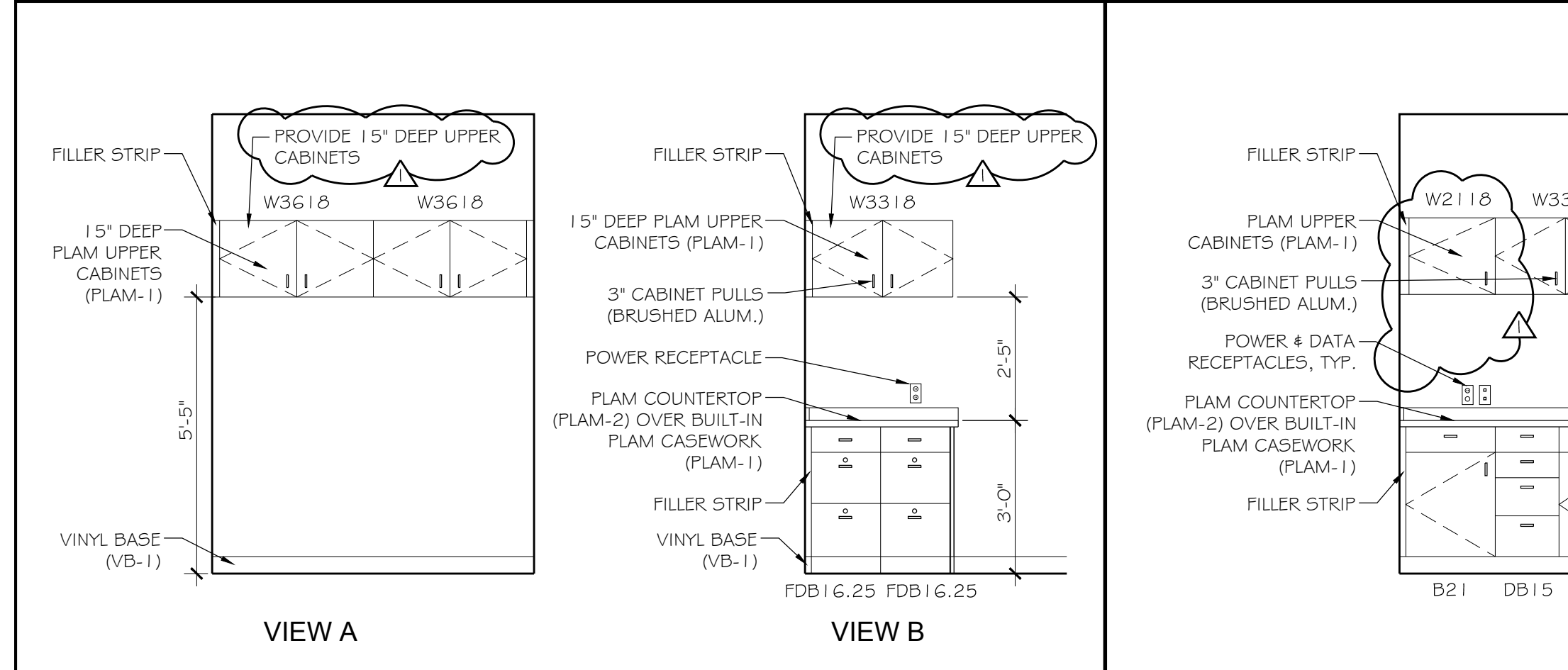


**6** INTERIOR ELEVATIONS- ELEVATOR RECEPTION (ROOM #301)  
A103 SCALE: 3/8" = 1'-0"

**5** SECURE STORAGE ELEV. (ROOM #224)  
A102 SCALE: 3/8" = 1'-0"

**4** WORK AREA ELEV. (ROOM #244)  
A102 SCALE: 3/8" = 1'-0"

**3** PREP AREA ELEV. (ROOM #242)  
A102 SCALE: 3/8" = 1'-0"

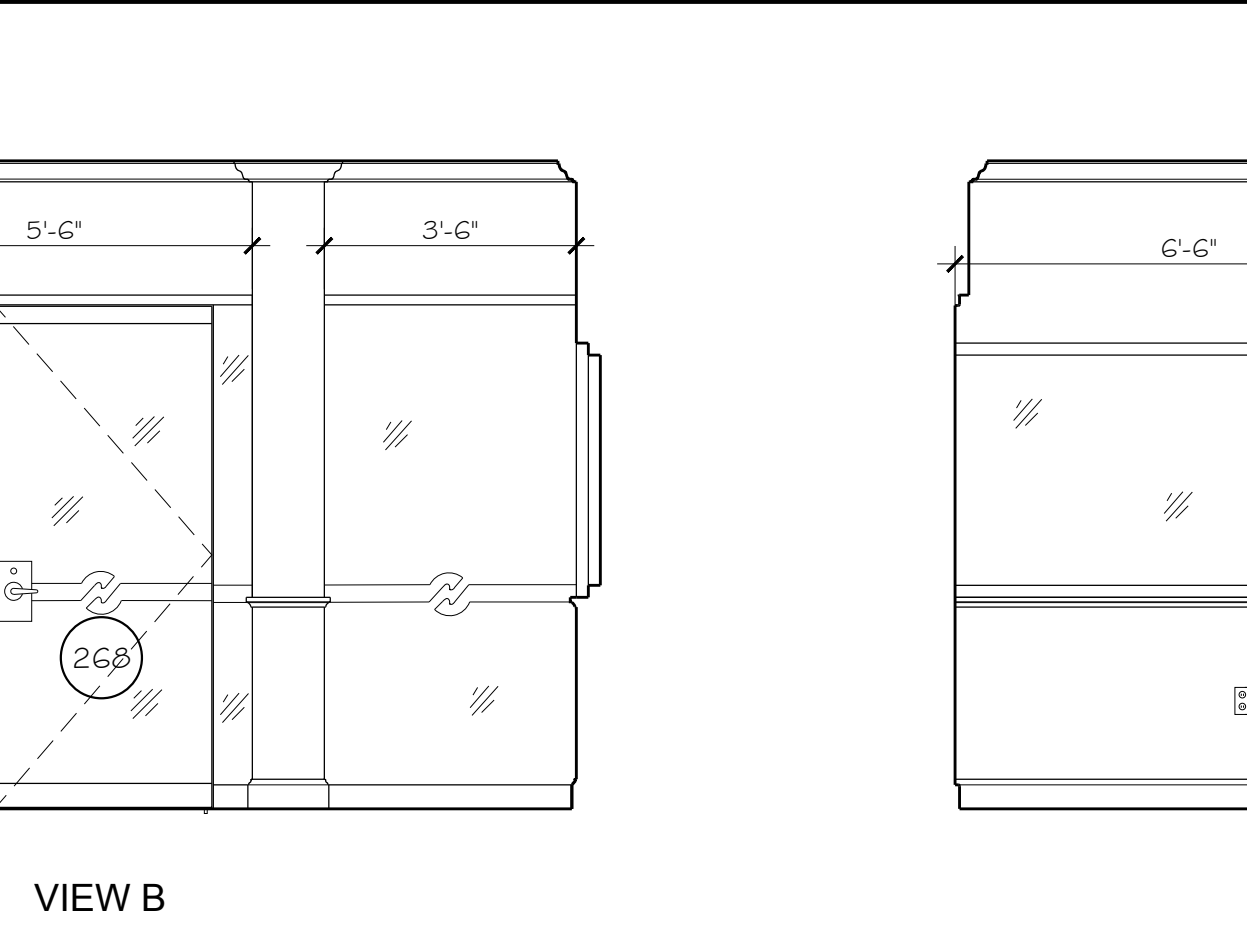
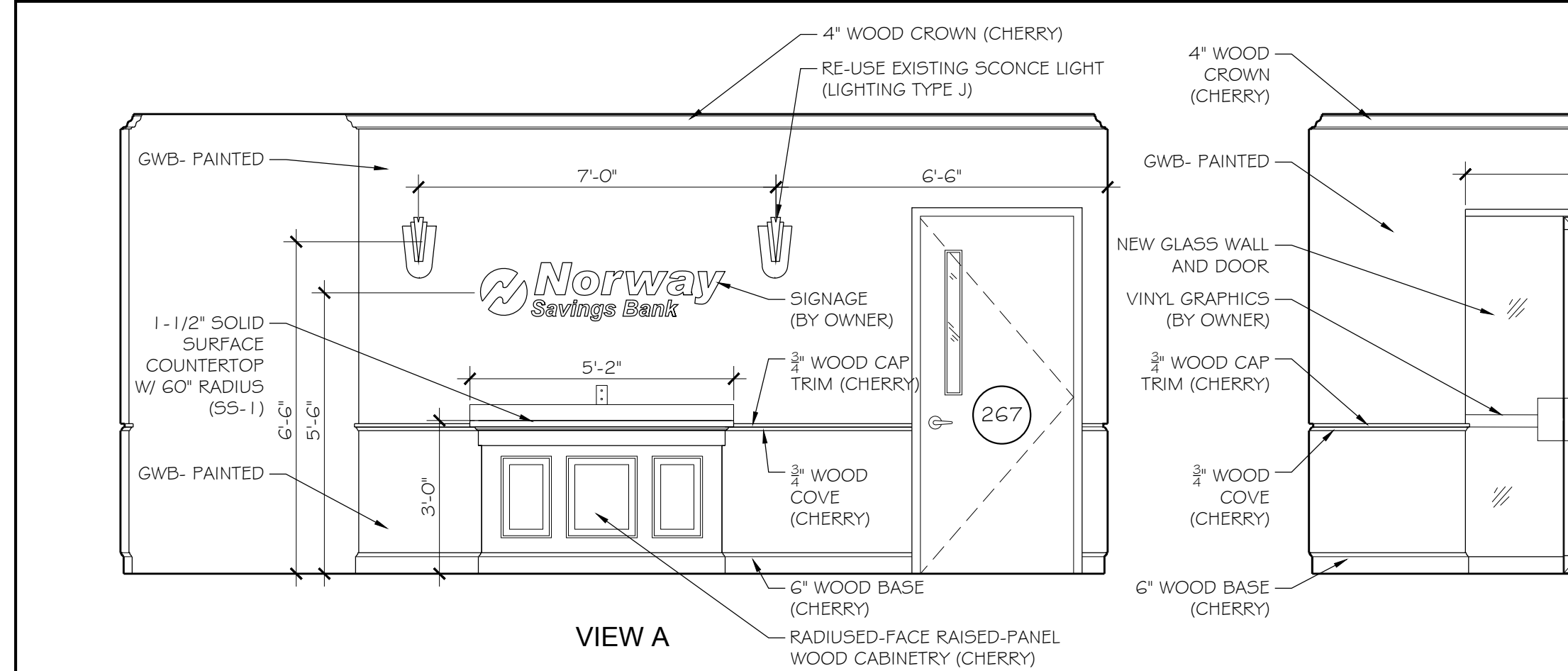


**5** SECURE STORAGE ELEV. (ROOM #224)  
A102 SCALE: 3/8" = 1'-0"

**4** WORK AREA ELEV. (ROOM #244)  
A102 SCALE: 3/8" = 1'-0"

**3** PREP AREA ELEV. (ROOM #242)  
A102 SCALE: 3/8" = 1'-0"

**2** BREAK ROOM ELEV. (ROOM #203)  
A102 SCALE: 3/8" = 1'-0"



**1** INTERIOR ELEVATIONS- RECEPTION LOBBY (ROOM #201)  
A102 SCALE: 3/8" = 1'-0"

**2** BREAK ROOM ELEV. (ROOM #203)  
A102 SCALE: 3/8" = 1'-0"

**3** PREP AREA ELEV. (ROOM #242)  
A102 SCALE: 3/8" = 1'-0"

**4** WORK AREA ELEV. (ROOM #244)  
A102 SCALE: 3/8" = 1'-0"

**PLATZ ASSOCIATES**  
Architects - Engineers  
Construction Managers  
Two Great Falls Plaza, Auburn, Maine 04210  
Tel 207-784-2841  
Fax 207-784-3856

Proposed Renovation of:  
**NORWAY SAVINGS BANK**  
1200 Congress Avenue  
Portland, Maine

LICENSED ARCHITECT  
TRAVIS R. NADEAU  
04038  
STATE OF MAINE

DRAWING STATUS  
 OFFICE REVIEW  
 CLIENT REVIEW  
 PERMIT REVIEW  
 BID SET  
 CONTRACT DRAWING  
 CONSTRUCTION

SHEET TITLE  
**INTERIOR ELEVATIONS**

JOB NO.  
201512

DRAWN BY  
EBJ

CHECKED BY  
TRN

SCALE  
AS NOTED

ORIGINAL DATE  
09-19-2016

REVISION DATE  
10-03-16

SHEET  
**A610**

**BID DOCUMENTS  
NOT FOR CONSTRUCTION**

INSB-1200 CONGRESS CORNERS ARCH PLANS 10-16-FLOOR PLAN 01.DWG