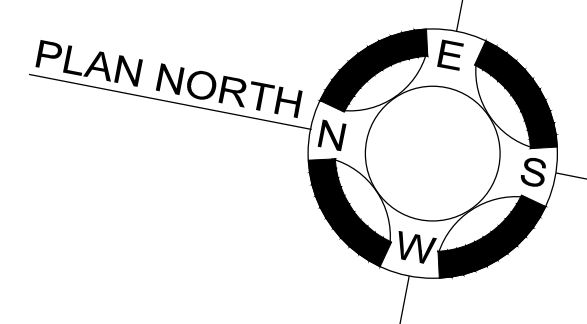
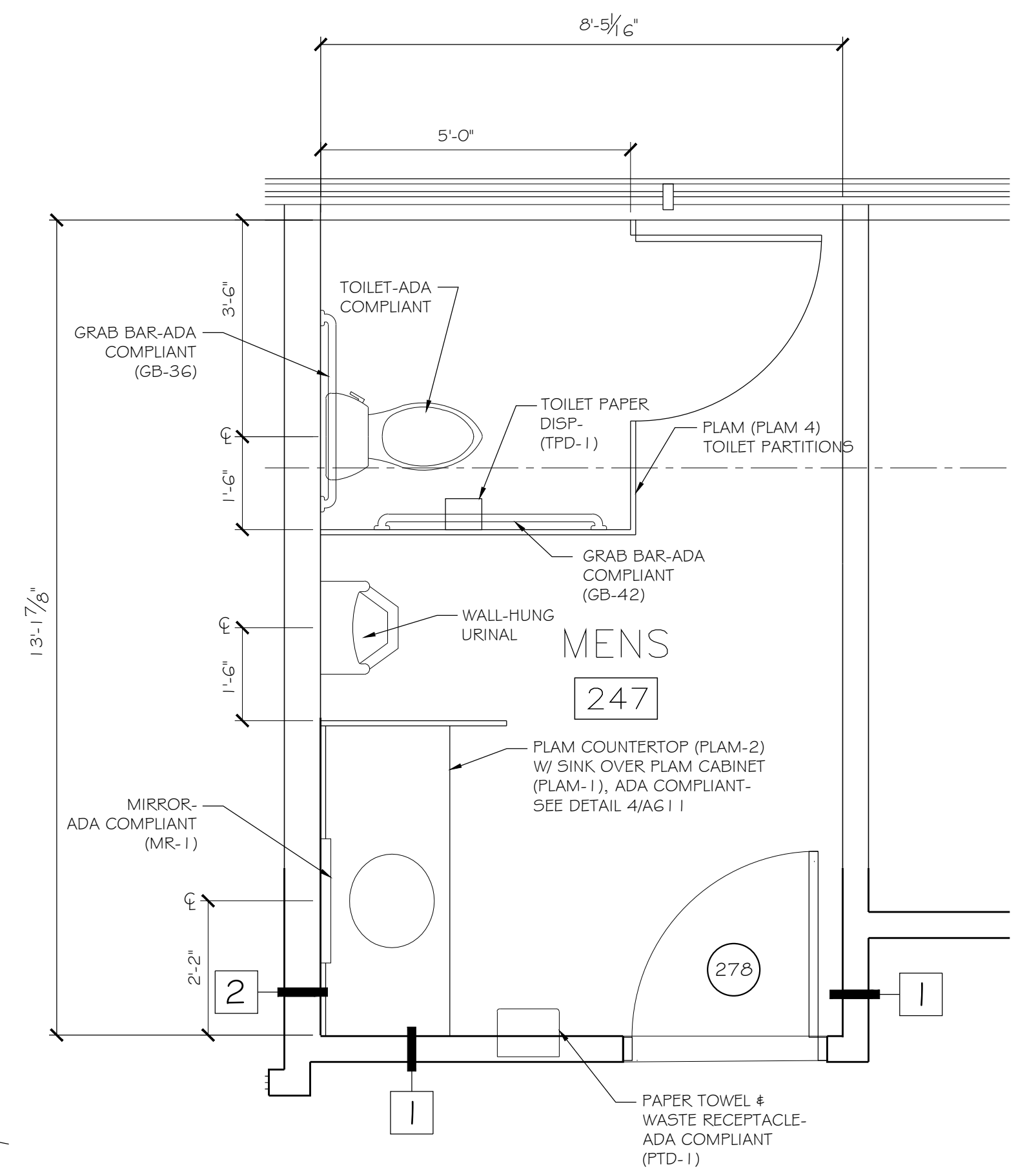


5 RESTROOM ENLARGED PLAN DETAIL (ROOM #308, #309 & #310)

A103 SCALE: 1/2" = 1'-0"

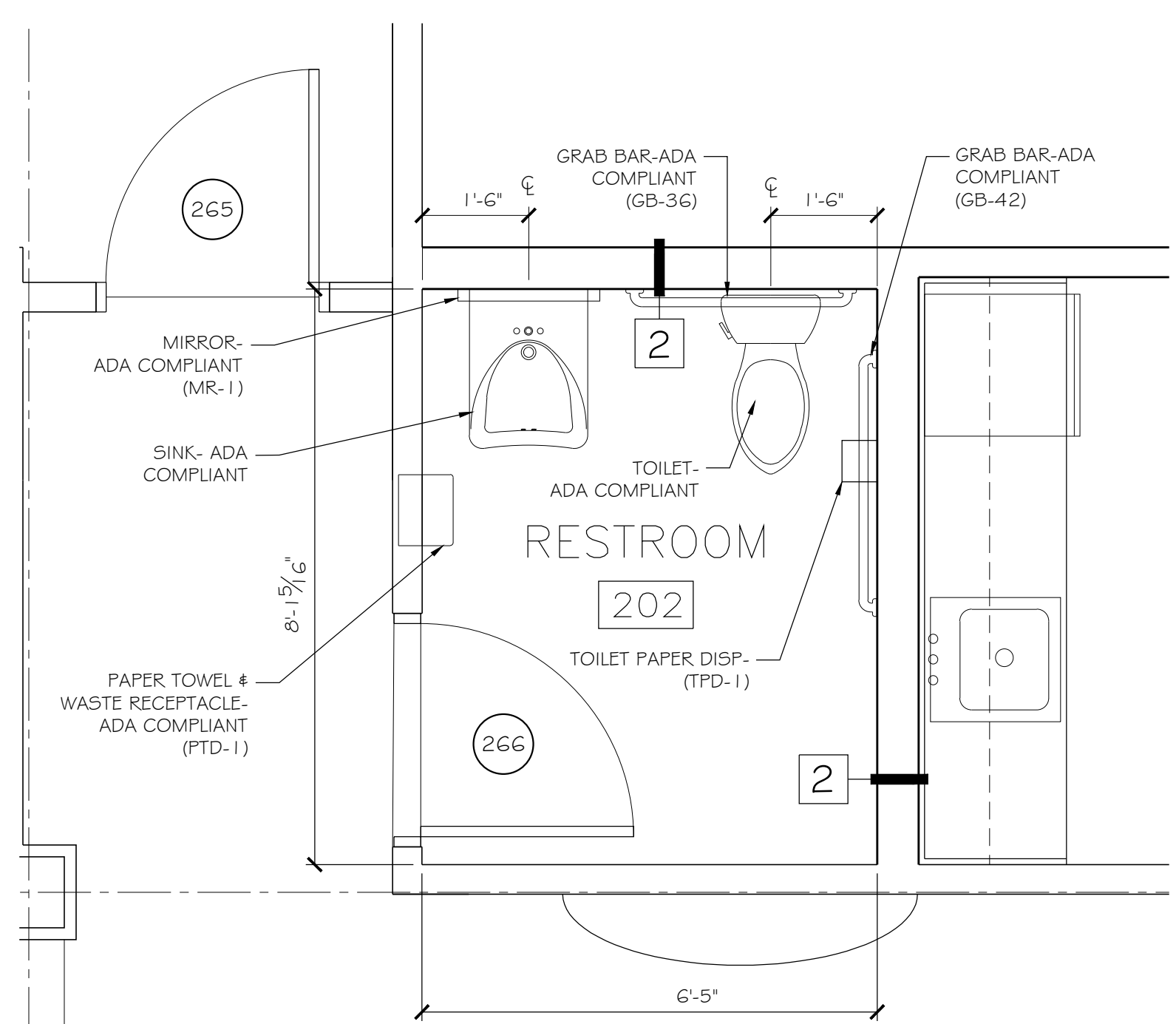
3 RESTROOM ENLARGED PLAN DETAIL (ROOM #254)

A102 SCALE: 1/2" = 1'-0"



2 RESTROOM ENLARGED PLAN DETAIL (ROOM #247)

A102 SCALE: 1/2" = 1'-0"



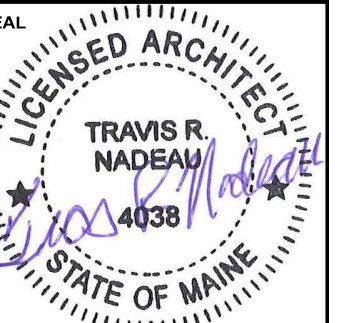
1 RESTROOM ENLARGED PLAN DETAIL (ROOM #202)

A102 SCALE: 1/2" = 1'-0"

**BID DOCUMENTS
NOT FOR CONSTRUCTION**

PLATZ ASSOCIATES
Architects - Engineers
Construction Managers
Two Great Falls Plaza, Auburn, Maine 04210
Tel 207-784-2841
Fax 207-784-3856

Proposed Renovation of:
NORWAY SAVINGS BANK
1200 Congress Avenue
Portland, Maine



- DRAWING STATUS
- OFFICE REVIEW
 - CLIENT REVIEW
 - PERMIT REVIEW
 - BID SET
 - CONTRACT DRAWING
 - CONSTRUCTION

No drawing shall be recognized as a construction document unless it bears a blue inked registration seal.

SHEET TITLE
ENLARGED RESTROOM PLAN DETAILS

JOB NO. 201512

DRAWN BY EBJ CHECKED BY TRN

SCALE AS NOTED

ORIGINAL DATE 09-19-2016

REVISION DATE 10-03-16

SHEET

A600

INSB-1200 CONGRESS CONDORS ARCH/PLANS/1610-01-000/PLANS.DWG