

DRAWING STATUS

- OFFICE REVIEW
- CLIENT REVIEW
- PERMIT REVIEW
- BID SET
- CONTRACT DRAWING
- CONSTRUCTION

No drawing shall be recognized as a construction document unless it bears a blue inked registration seal.

SHEET TITLE  
**FIRST FLOOR REFLECTED CEILING PLAN**

JOB NO.  
 201512

DRAWN BY  
 EBJ

CHECKED BY  
 TRN

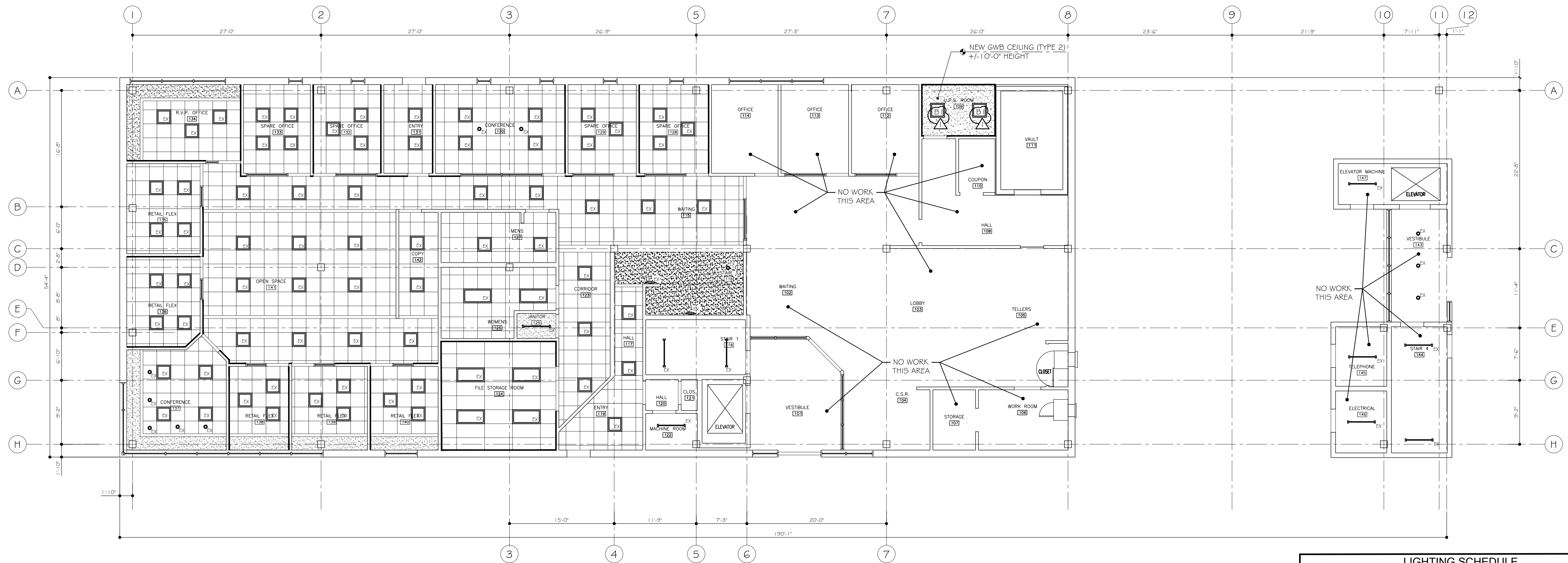
SCALE  
 AS NOTED

ORIGINAL DATE  
 09-19-2016

REVISION DATE  
 10-19-16

SHEET

**A401**



**LIGHTING SCHEDULE**

	LIGHTING FIXTURE TYPE A = 2' X 4' RECESSED LED SPEC: UTHONIA LIGHTING #2VTL4-2CL-ADP-EZ1-UP030
	LIGHTING FIXTURE TYPE A1 = 2' X 4' SURFACE-MOUNTED LED SPEC: UTHONIA LIGHTING #2VTL4-2CL-ADP-EZ1-UP030-DGAS4F5AT
	LIGHTING FIXTURE TYPE B = 2' X 2' RECESSED LED SPEC: UTHONIA LIGHTING #2VTL2-33L-ADP-EZ1-UP030
	LIGHTING FIXTURE TYPE B1 = 2' X 2' RECESSED LED SPEC: UTHONIA LIGHTING #2VTL2-33L-ADP-EZ1-UP030-DGAS4F5AT
	LIGHTING FIXTURE TYPE C = INTERIOR WALL-MOUNTED LED SCIENCE SPEC: NOT USED
	LIGHTING FIXTURE TYPE D = INTERIOR WALL-MOUNTED LED SCIENCE SPEC: NOT USED
	LIGHTING FIXTURE TYPE E = 4" RECESSED INTERIOR LED DOWNLIGHT SPEC: ATLANTIC LIGHTING #LED4-ILM20-35K-1-LED-4LED 10-WH
	LIGHTING FIXTURE TYPE F = 4" RECESSED ADJUSTABLE LED DOWNLIGHT SPEC: ATLANTIC #LED4AD-1VR20-35K-1-2VR36AD-1WH
	LIGHTING FIXTURE TYPE G = 48" INTERIOR STRIP LIGHT SPEC: LUMAX #UCM114-EG1PC-IS-SW
	LIGHTING FIXTURE TYPE H = 48" INTERIOR UPDOWN LINEAR LIGHT SPEC: LUMAX #UCM114-EG1PC-IS-SW
	LIGHTING FIXTURE TYPE J = RE-USE EXISTING INTERIOR WALL-MOUNTED SCIENCE SPEC: EXISTING FIXTURES RETAINED FROM SECOND FLOOR
	LIGHTING FIXTURE TYPE K = RE-USE EXISTING 48" UPDOWN LINEAR LIGHT SPEC: EXISTING FIXTURES RETAINED FROM THIRD FLOOR
	LIGHTING FIXTURE TYPE L = RE-USE EXISTING 2' X 2' RECESSED FIXTURES SPEC: EXISTING FIXTURES RETAINED FROM THE SECOND & THIRD FLOORS

**BID DOCUMENTS  
 NOT FOR CONSTRUCTION**