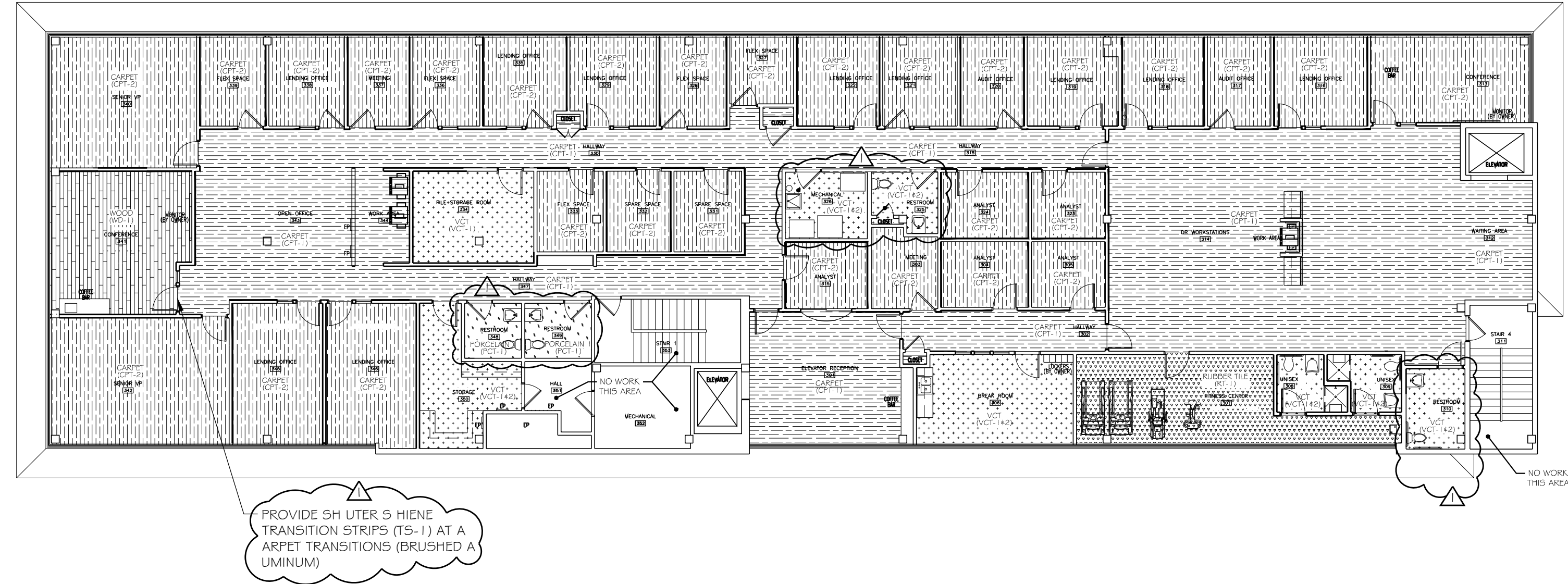


MATERIAL	DWG MARK	MANUFACTURER	PROD. #	PRODUCT NAME/COLOR	DESCRIPTION
WOOD FLOORING	WD-1	Mirage	Engineered	American Cherry	3-5/16" wide
CARPET Public Areas	CPT-1	Interface	Permian	#100536 "Lava"	n/a
CARPET Public Areas	CPT-1 ALTERNATE	Shaw Floors	Surface Impressions	#00511 "Charcoal"	ALTERNATE
CARPET Private Areas	CPT-2	Interface	Vector	#103529 "Flax"	n/a
CARPET Private Areas	CPT-2 ALTERNATE	J & J Invision	Mosaic	#477 "Manilla"	ALTERNATE
CARPET Walk-off Mat	CPT-3	Interface	Entry Level	#7189 "Blue"	n/a
TRANSITION STRIP	TS-1	Schluter Schiene		stainless	wood to tile
TRANSITION STRIP	TS-2	Schluter Reno-TK		stainless	wood/tile to carpet
INTERIOR WALL PAINT	PT-01	Sherwin Williams	SW2829	"Classical White"	primary interior wall color
INTERIOR WALL PAINT	PT-02	Sherwin Williams	SW2827	"Colonial Revival Stone"	interior wall color
INTERIOR WALL PAINT	PT-03	Sherwin Williams	SW0055	"Light French Gray"	interior trim and door color
INTERIOR WALL PAINT	PT-04	Sherwin Williams	SW2826	"Colonial Green"	interior accent
INTERIOR WALL PAINT	PT-05	Sherwin Williams	SW0032	"Needlepoint Navy"	interior accent
INTERIOR WALL PAINT	PT-09	Sherwin Williams	n/a	"Ceiling White"	interior ceiling
CEILING PAINT	PCT-01	Daltile	Continental Slate	"Tuscan Blue"	bathrooms
PORCELAIN TILE	PCT-02	Marazzi USA	Campione	"Sampras" 13"x13"	lobby
VINYL COMPOSITION TILE	VCT-1	Armstrong	Excelon	#51803 "Pearl White"	checkerboard with VCT-2
VINYL COMPOSITION TILE	VCT-2	Armstrong	Excelon	#51916 "Dutch Delft"	checkerboard with VCT-1
VINYL TREAD/RISER	VTR-1	Johnsonite	Vinyl	RCN-XX-A #29 "Moon Rock"	stairs
VINYL BASE	VB-1	Johnsonite	Vinyl	# 63 "Burnt Umber"	4" cove base for CPT-1
VINYL BASE	VB-2	Johnsonite	Vinyl	# 63 "Burnt Umber"	4" cove base for CPT-2
VINYL BASE	VB-3	Johnsonite	Vinyl	#40 "Black"	4" cove base for CPT-3
PLASTIC LAMINATE	PLAM-1	Wilsonart	D327-60	"Pepperdust"	casework
PLASTIC LAMINATE	PLAM-2	Wilsonart	4820-60	"Carbon EV"	countertops
SOLID SURFACING	SS-1	Avonite		Brazilian Blue	countertops
RUBBER TILE	RT-1	Johnsonite	Inertia	#KJ2 "Tidal"	fitness center

PAINTING NOTES:
 1. A EXISTING WALLS AND CEILINGS TO REMAIN ARE TO BE PAINTED. COLORS TO BE SE ETD BY OWNER'S REP.
 2. A EXISTING GYM WALLS AND CEILINGS TO BE PAINTED AS REQ. PRIOR TO FINAL PAINTING.
 3. A EXISTING GYM CEILINGS TO REMAIN ARE TO BE PAINTED CEILING WHITE.

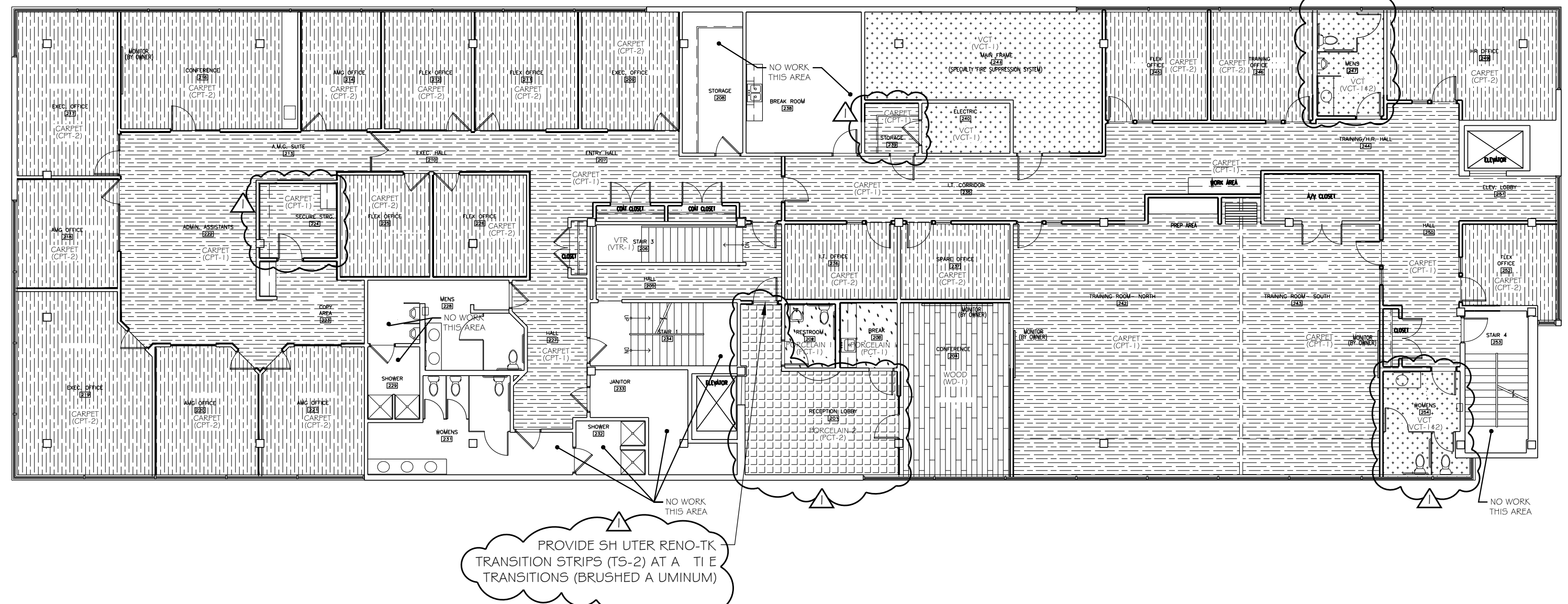


3 THIRD FLOOR FINISH PLAN

SCALE: N.T.S.

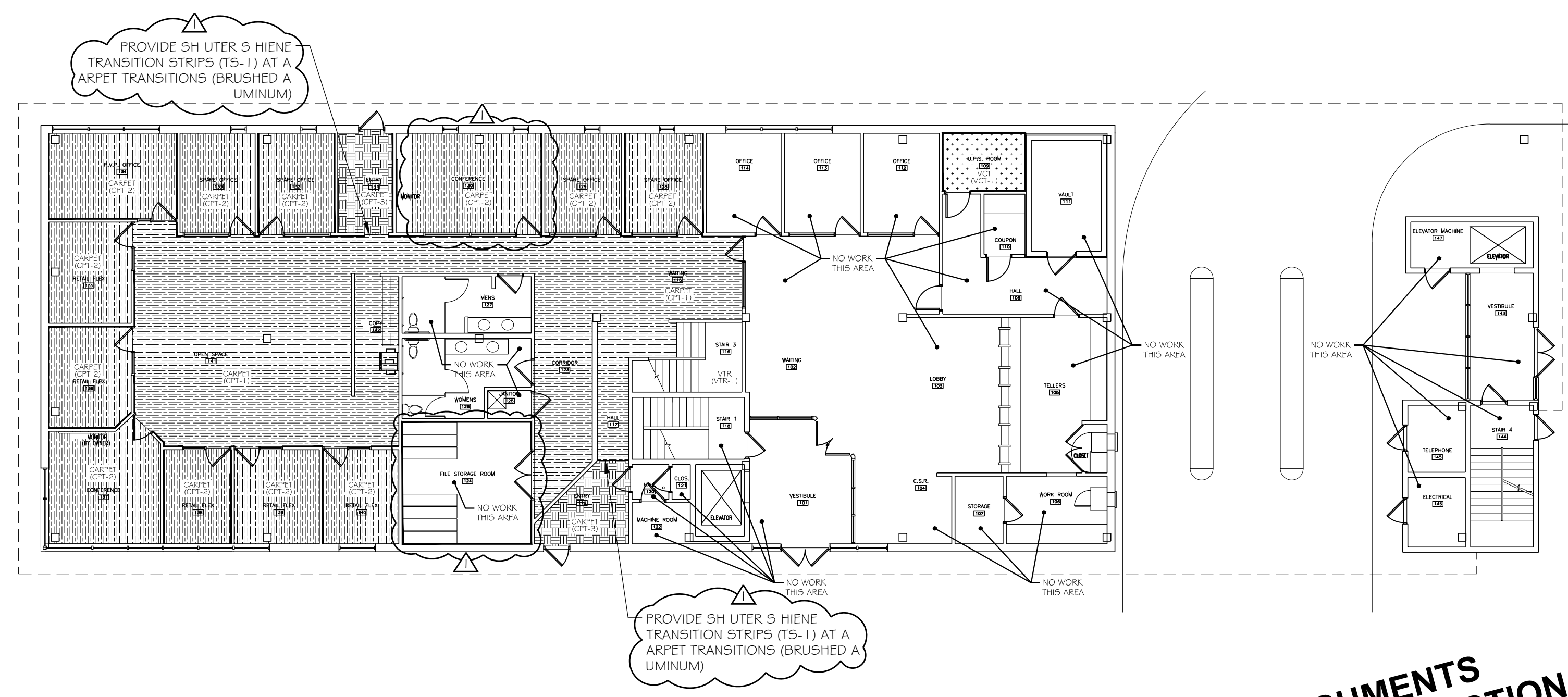
4 FINISH SCHEDULE

SCALE: N.T.S.



2 SECOND FLOOR FINISH PLAN

SCALE: N.T.S.

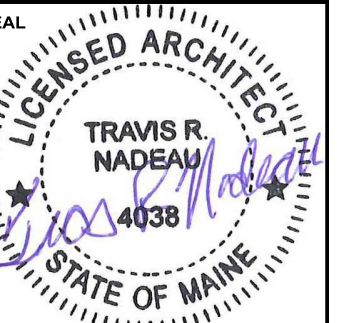


1 FIRST FLOOR FINISH PLAN

SCALE: N.T.S.

PLATZ ASSOCIATES
 Architects - Engineers
 Construction Managers
 Tel 207-784-2941
 Fax 207-784-3856
 Two Great Falls Plaza, Auburn, Maine 04210

Proposed Renovation of:
NORWAY SAVINGS BANK
 1200 Congress Avenue
 Portland, Maine



DRAWING STATUS
 OFFICE REVIEW
 CLIENT REVIEW
 PERMIT REVIEW
 BID SET
 CONTRACT DRAWING
 CONSTRUCTION

No drawing shall be recognized as a construction document unless it bears a blue inked registration seal.

SHEET TITLE
FLOOR FINISH PLANS

JOB NO. 201512

DRAWN BY EBJ CHECKED BY TRN

SCALE AS NOTED

ORIGINAL DATE 09-19-2016

REVISION DATE 10-03-16

SHEET

A003

BID DOCUMENTS NOT FOR CONSTRUCTION