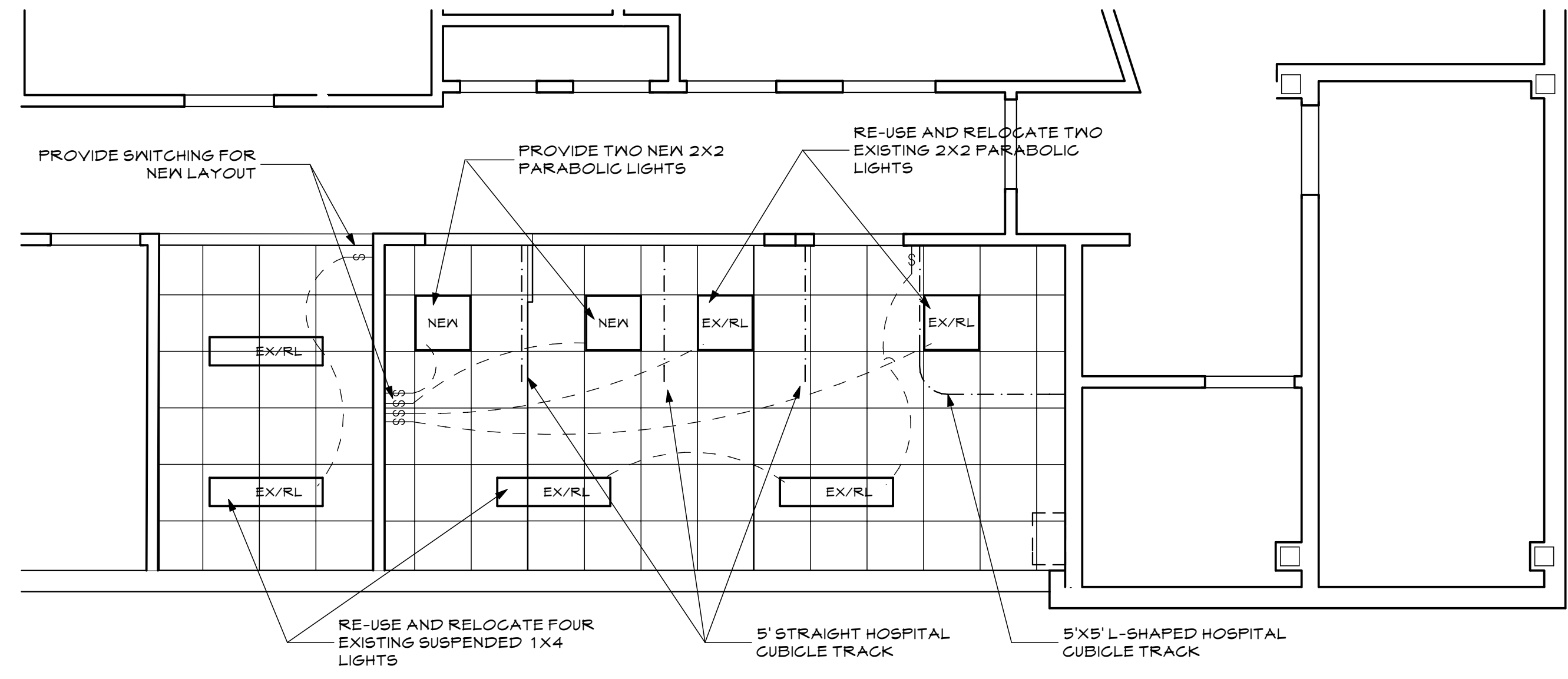


WHIPPLE - CALLENDER ARCHITECTS

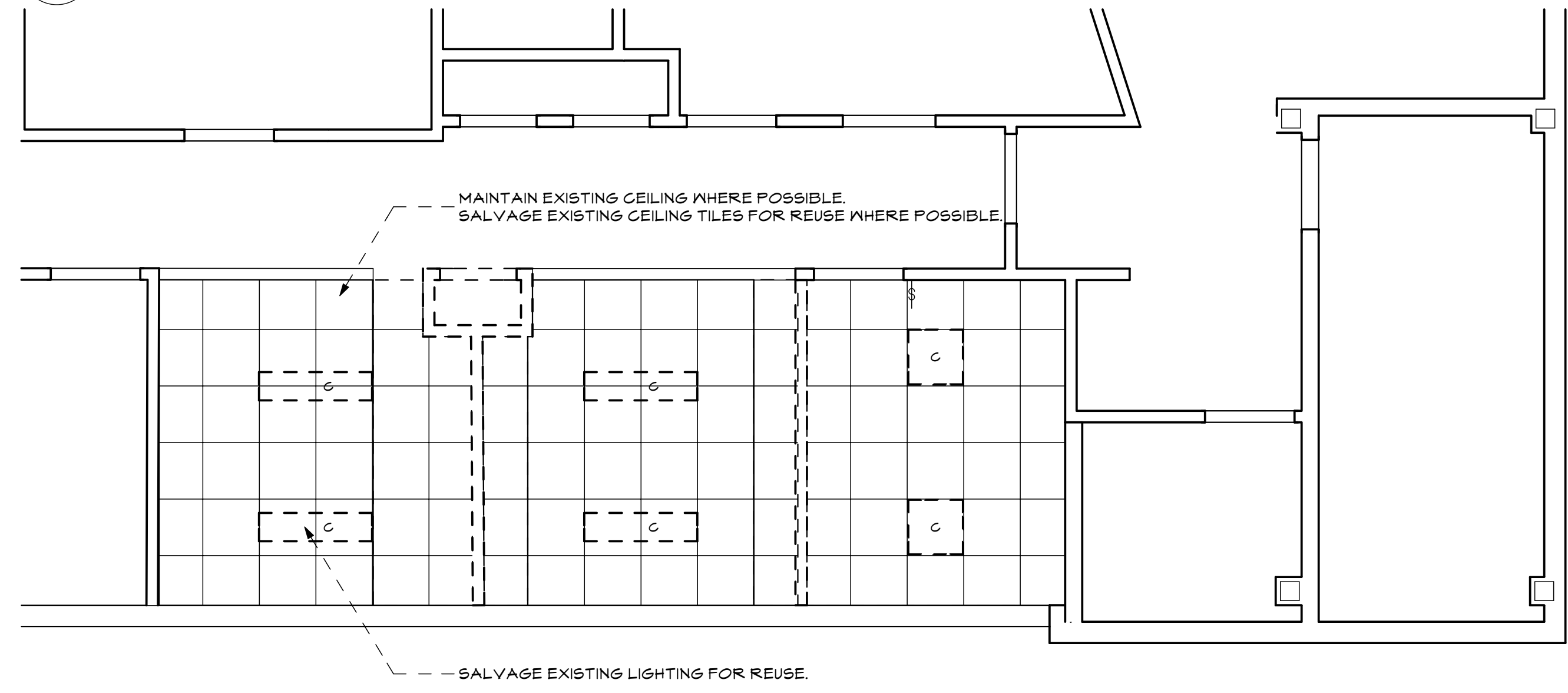
196 PLEASANT AVE.
 PORTLAND, ME 04103
 P 207.715.2616
 F 207.715.3631
 www.whipplecallender.com

MARK	DATE	DESCRIPTION

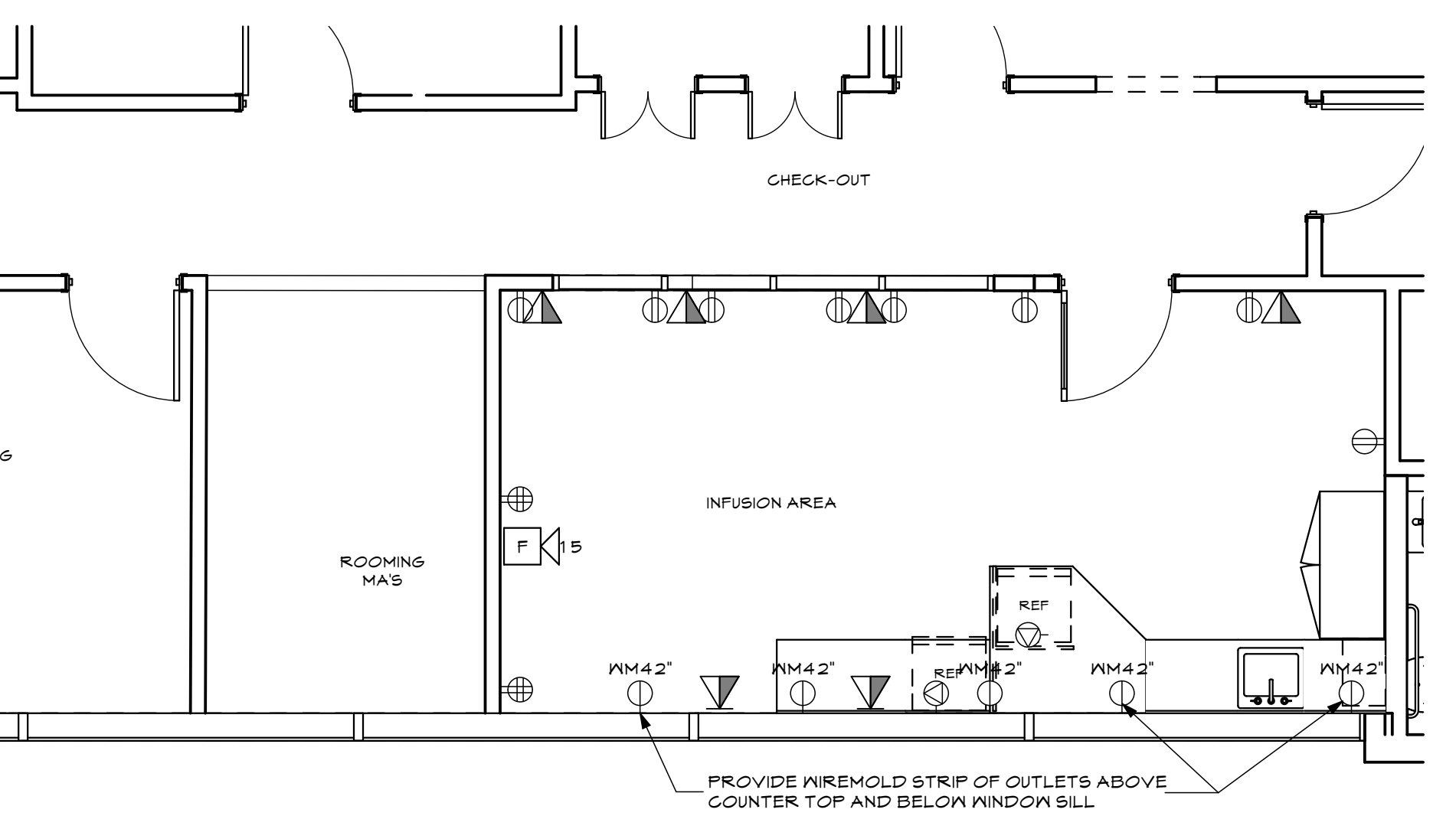
DATE:	6-4-2013
CHECKED BY:	AEC
DRAWN BY:	AEC
JOB:	13-P65
SHEET TITLE:	FLOOR PLANS - ELECTRICAL REFLECTED CEILING DEMO FURNITURE



4 REFLECTED CEILING PLAN
 A1.1 SCALE: 1/4" = 1'-0"

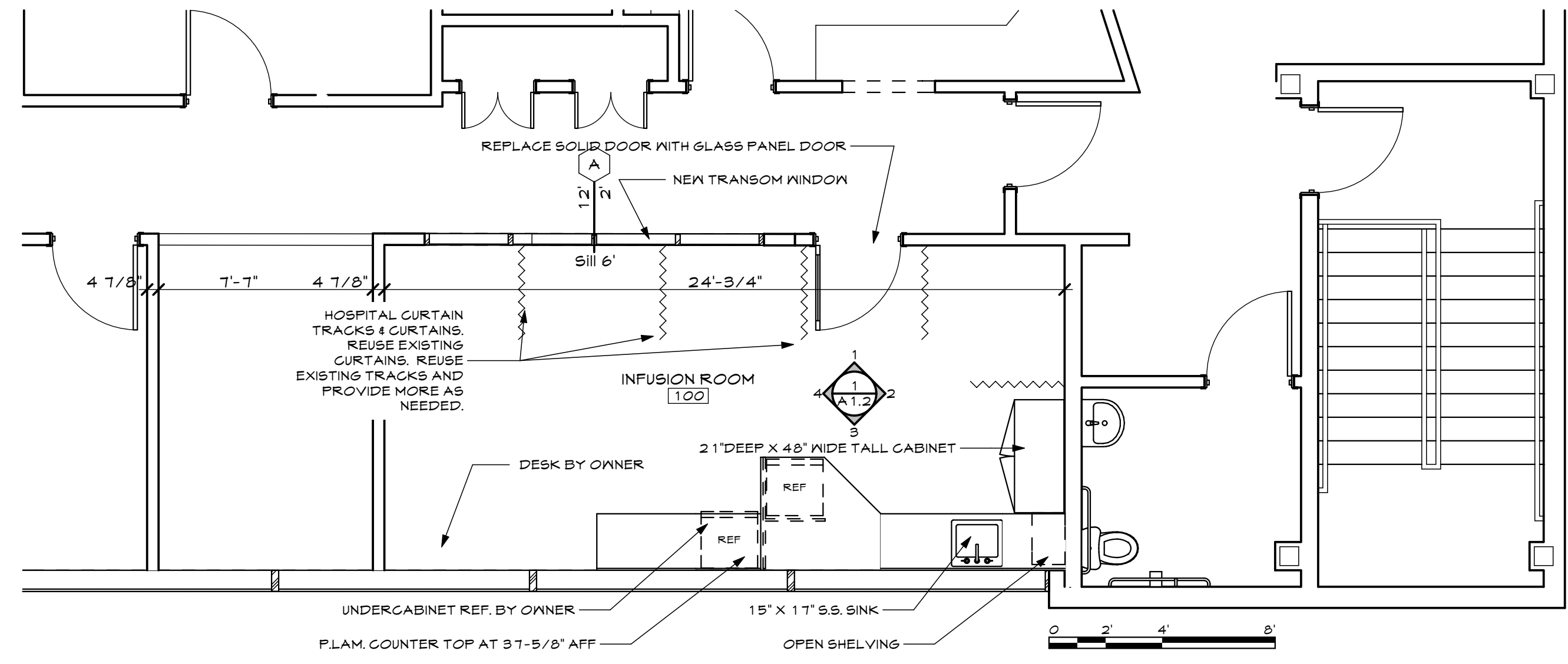


5 REFLECTED CEILING - DEMO PLAN
 A1.1 SCALE: 1/4" = 1'-0"

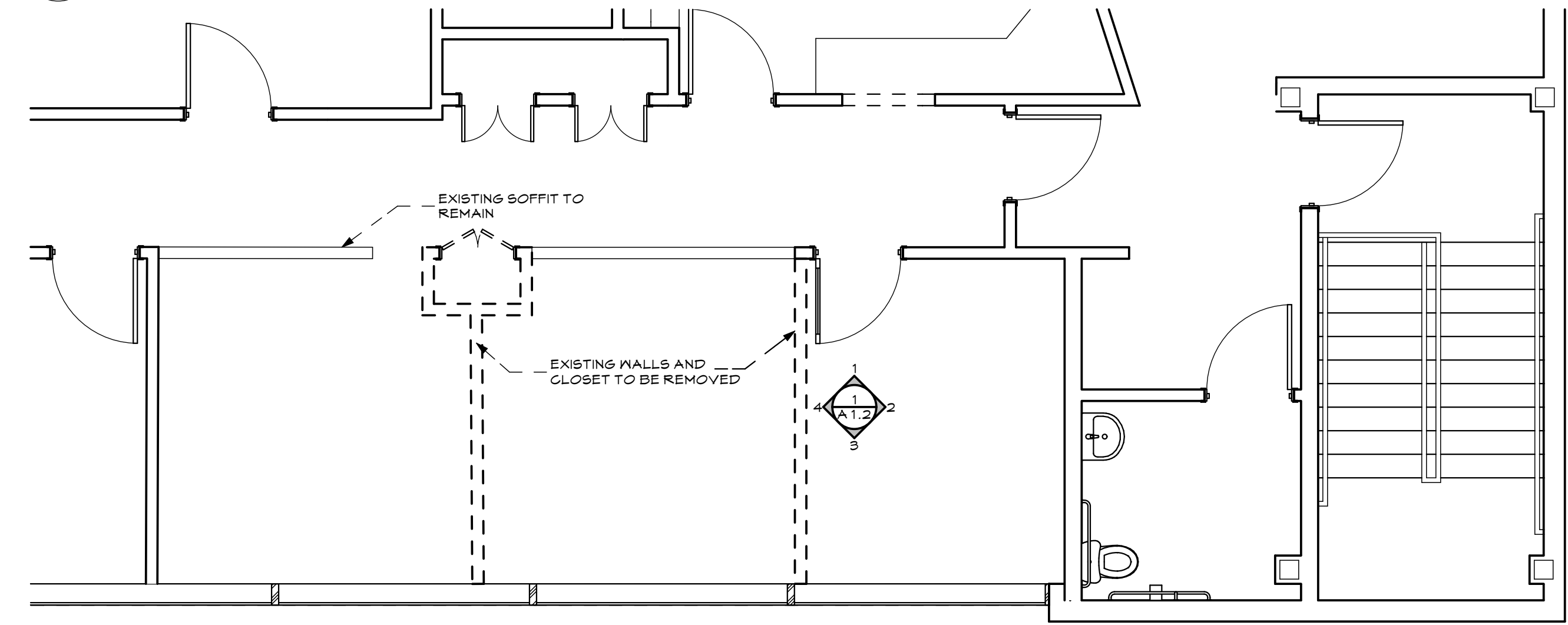


- ELECTRICAL AND LIFE SAFETY DEVICE LEGEND**
- DUPLEX OUTLET 18" AFF. UNLESS NOTED OTHERWISE. PROVIDE GFI @ TOILET ROOMS & AREAS WITH SINKS
 - WIREMOLD OUTLETS ABOVE COUNTER TOP - 42" AFF +/- PROVIDE GFI @ AREAS WITH SINKS
 - DOUBLE DUPLEX OUTLET 18" AFF. UNLESS NOTED OTHERWISE. 'C' INDICATES COUNTER HEIGHT 'GFI' INDICATES GROUND FAULT
 - SINGLE POWER OUTLET
 - COMBINATION PHONE AND DATA OUTLET 18" AFF. UNLESS NOTED OTHERWISE. 'C' INDICATES COUNTER HEIGHT
 - FIRE ALARM SYSTEM-HORN/STROBE LIGHT (#-CANDELLA)

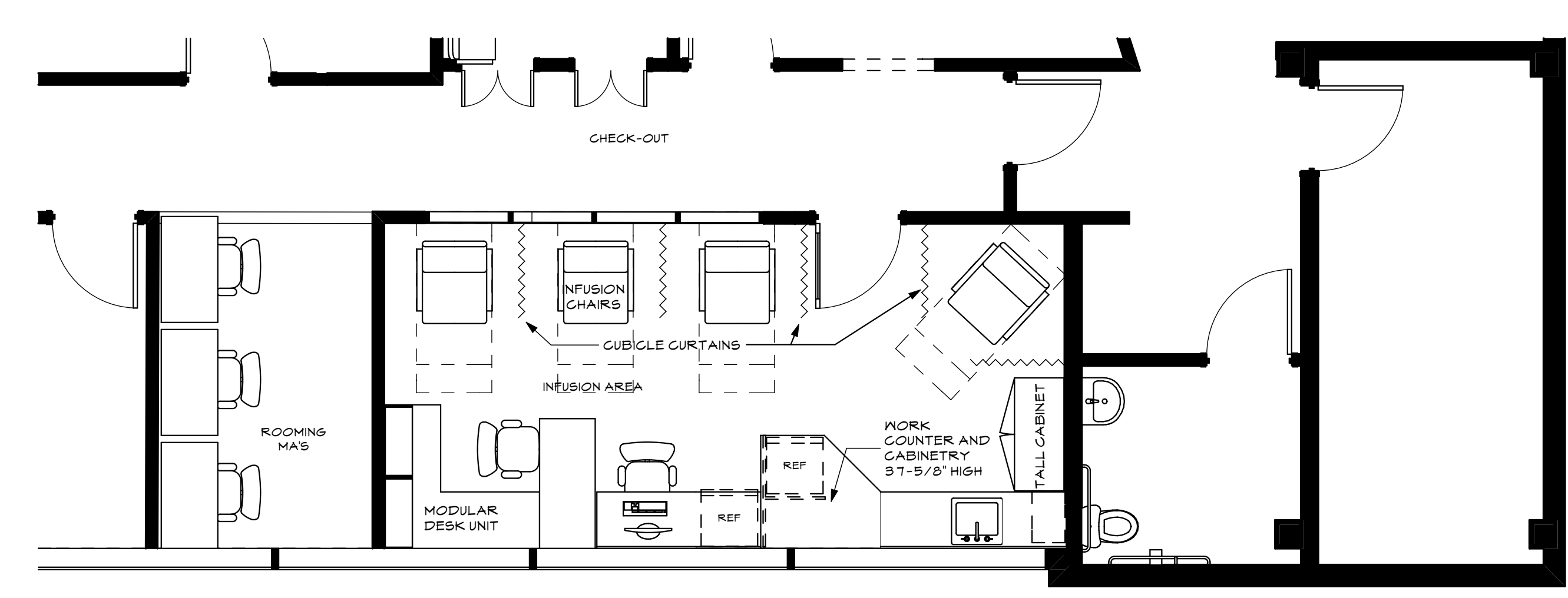
6 ELECTRICAL LAYOUT
 A1.1 SCALE: 1/4" = 1'-0"



1 FLOOR PLAN
 A1.1 SCALE: 1/4" = 1'-0"



2 DEMOLITION PLAN
 A1.1 SCALE: 1/4" = 1'-0"



3 FURNITURE PLAN
 A1.1 SCALE: 1/4" = 1'-0"

THIS DRAWING IS AN INSTRUMENT OF SERVICE AND SHALL REMAIN THE PROPERTY OF WHIPPLE CALLENDER ARCHITECTS. IT SHALL NOT BE USED FOR ANY OTHER PURPOSE THAT FOR WHICH IT IS SPECIFICALLY FURNISHED.