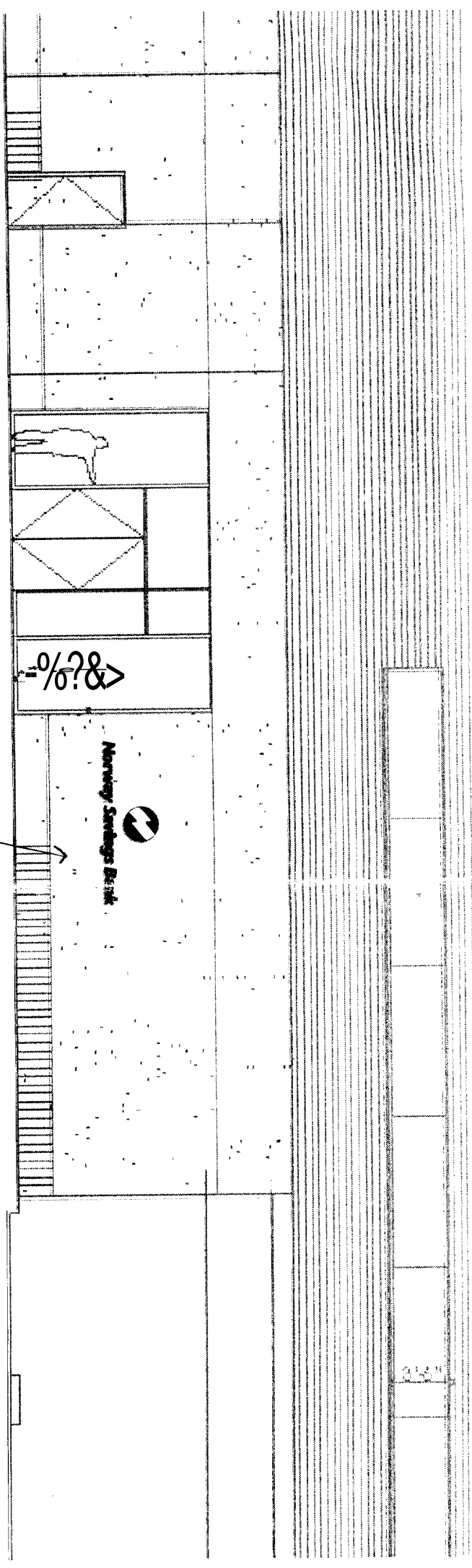


EXISTING & PERMITTED SIGNS

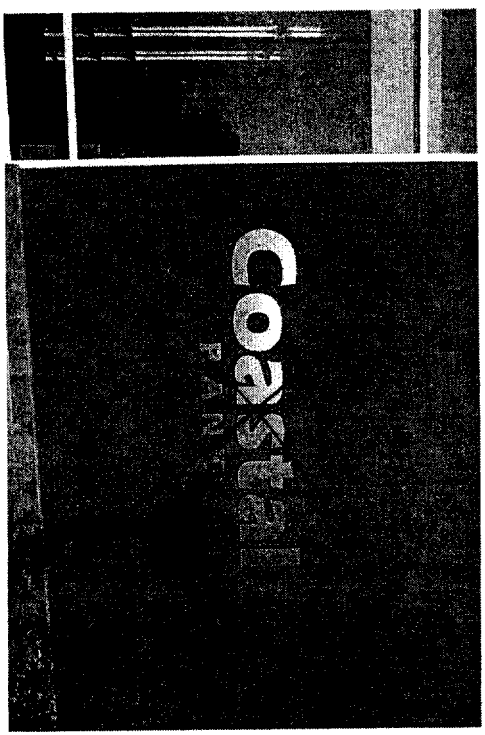


Partial West Elevation  
Scale: 1/8" = 1'-0"

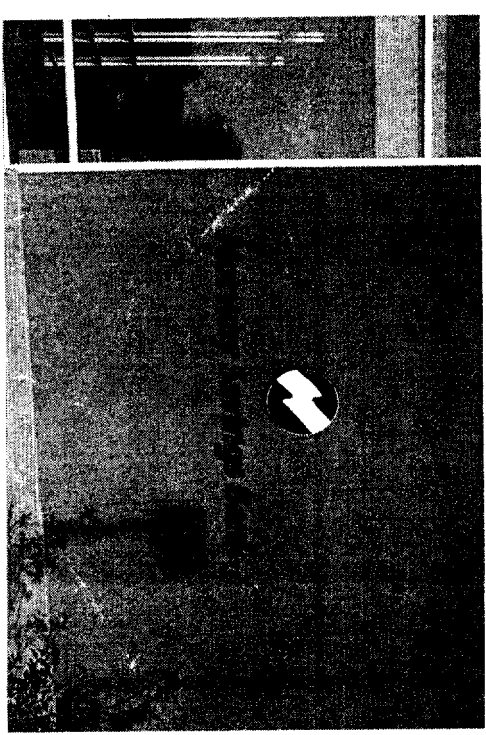


LOGO: ALUMINUM CONSTRUCTION, 1 1/2" DEEP  
WHITE BACKGROUND GSP VIVID GREEN TRANSL [230-156] VINYL  
(EXCEPT GSP INTENSE BLUE TRANSL [230-127] AT LOWER LOGO)  
LETTERS: FLAT CUT OUT 1/2" ALUMINUM PLATE  
MATCH GSP VIVID GREEN TRANSL [230-156]  
MOUNT FLUSH TO DRYWIT WALL; SEAL PENETRATIONS

Non-lighted Wall Letters  
Scale: 1/2" = 1'-0"



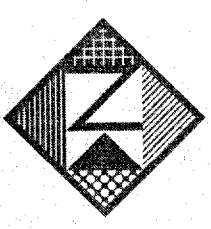
EXISTING



PROPOSED

Photo Composites  
Not to Scale

*Handwritten notes:*  
155  
in  
size



Neokraft

Neokraft Signs Inc.  
686 Main Street  
Lewiston, Maine 04240  
Telephone: 207.782.9654  
Facsimile: 207.782.0009  
1.800.339.2258  
<http://www.neokraft.com>

Custom Sign Fabrication

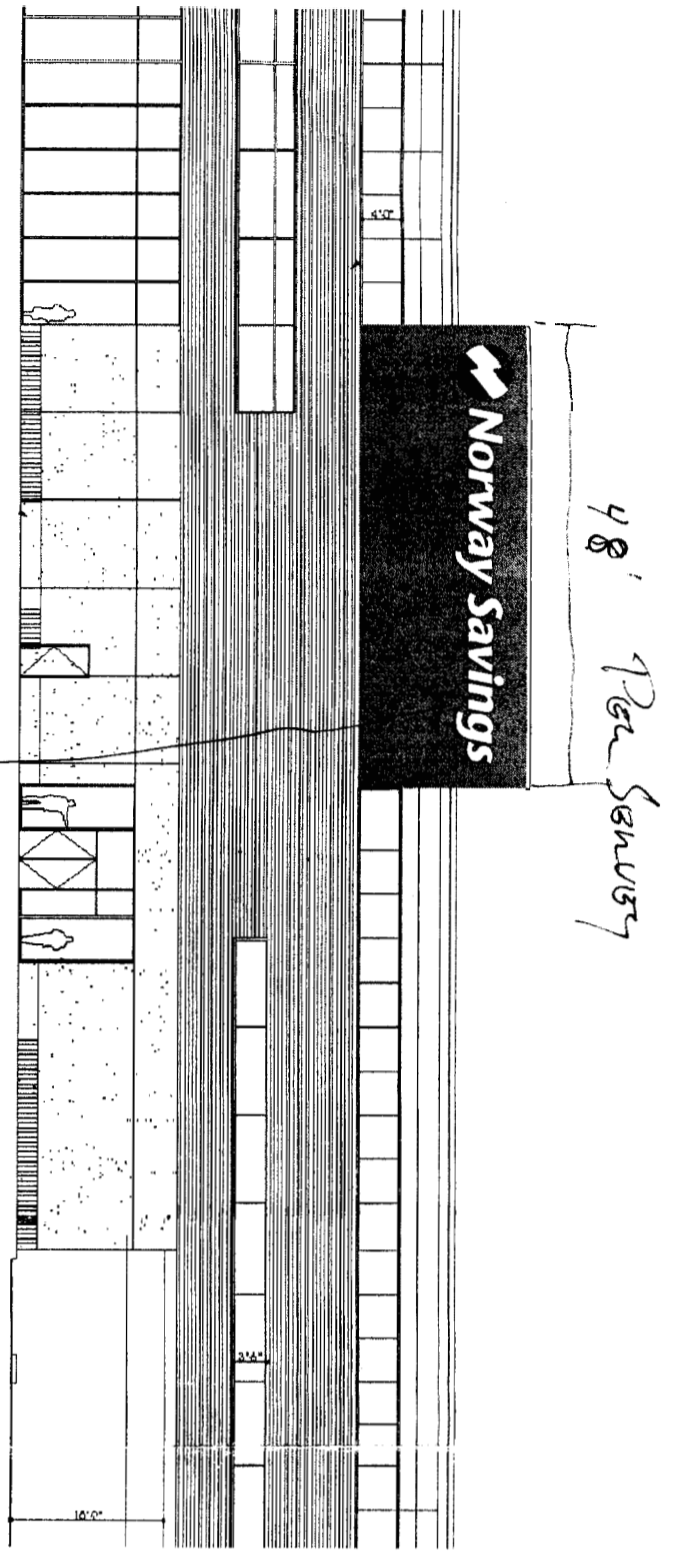
All ideas, plans or arrangements indicated on this drawing are copyrighted and owned by Neokraft Signs Inc. and shall not be reproduced, used by or disclosed to any person, firm or corporation without written permission of Neokraft Signs Inc.

Norway Savings

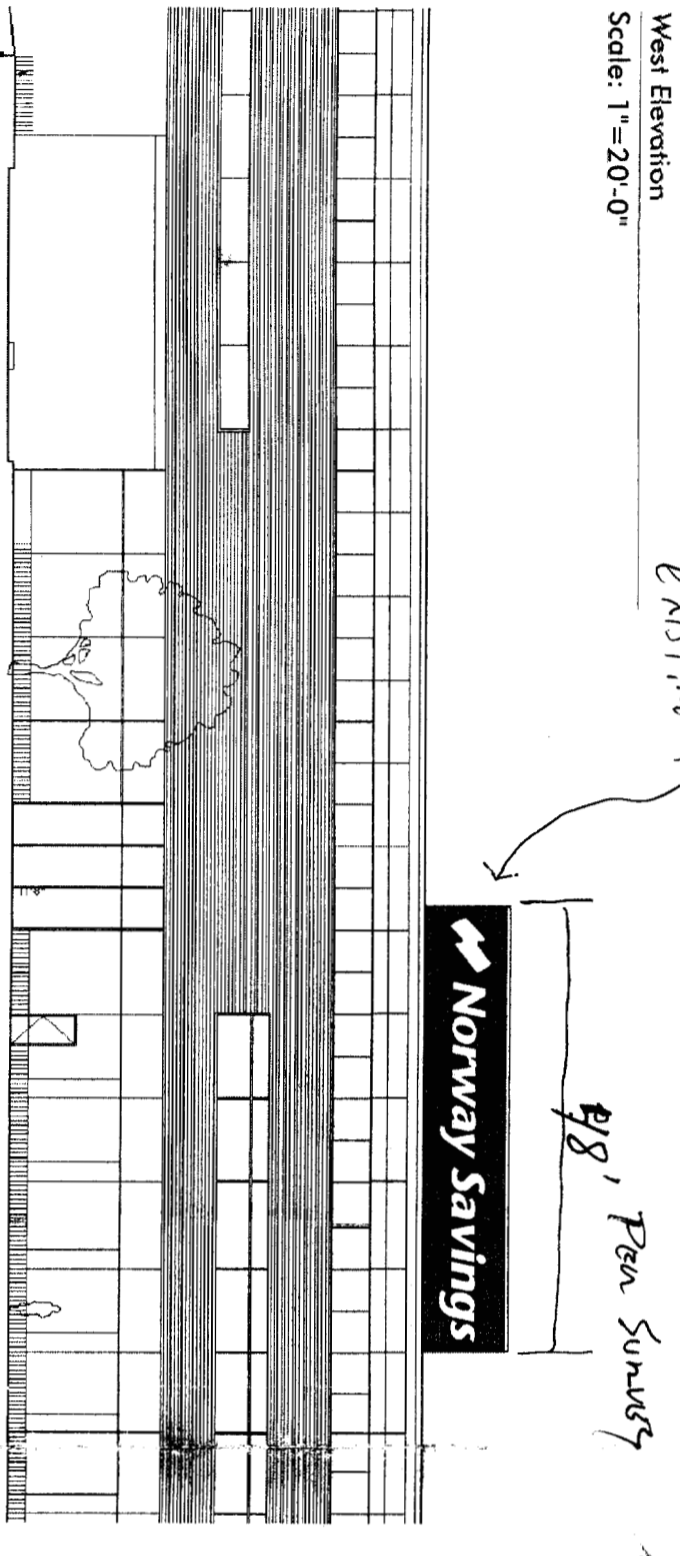
CL9862  
781L

Location:	1200 Congress St. Portland, ME
Drawing No.:	6 of 8
Drawn by:	J. Fogg
Date:	08.02.2001
Gen Ref.:	

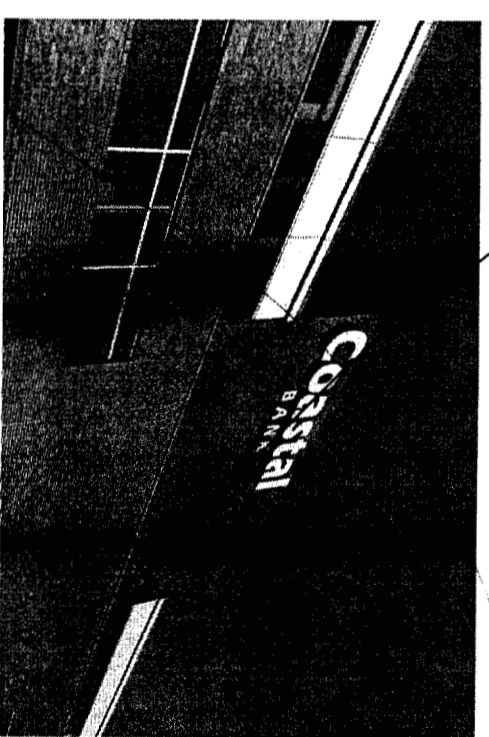
8'-6" 48'



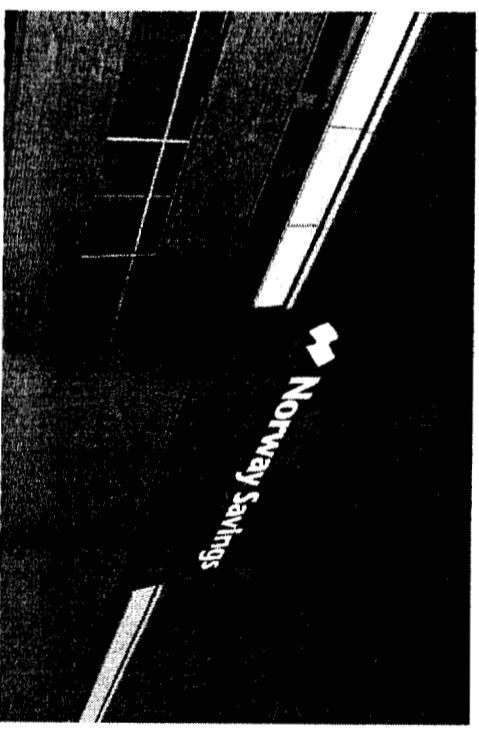
East Elevation  
Scale: 1"=20'-0"



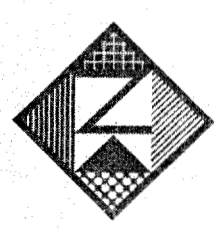
West Elevation  
Scale: 1"=20'-0"



EXISTING



PROPOSED EXISTING



**Neokraft**

Neokraft Signs Inc.  
686 Main Street  
Lewiston, Maine 04240  
Telephone: 207.782.9654  
Facsimile: 207.782.0009  
1.800.339.2258  
<http://www.neokraft.com>

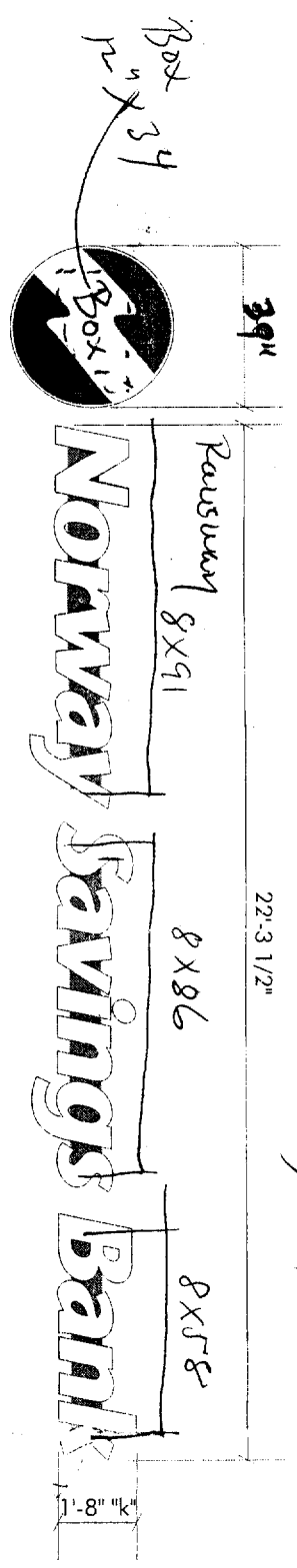
Custom Sign Fabrication

All ideas, plans or arrangements indicated on this drawing are copyrighted and owned by Neokraft Signs Inc. and shall not be reproduced, used by or disclosed to any person, firm or corporation without written permission of Neokraft Signs Inc.

**Norway Savings**  
CL9862

Location:	1200 Congress St. Portland, ME
Drawing No.:	4 of 8
Drawn by:	J. Fogg
Date:	08.02.2001
Gen Ref.:	

Photo Compos  
Not to Scale

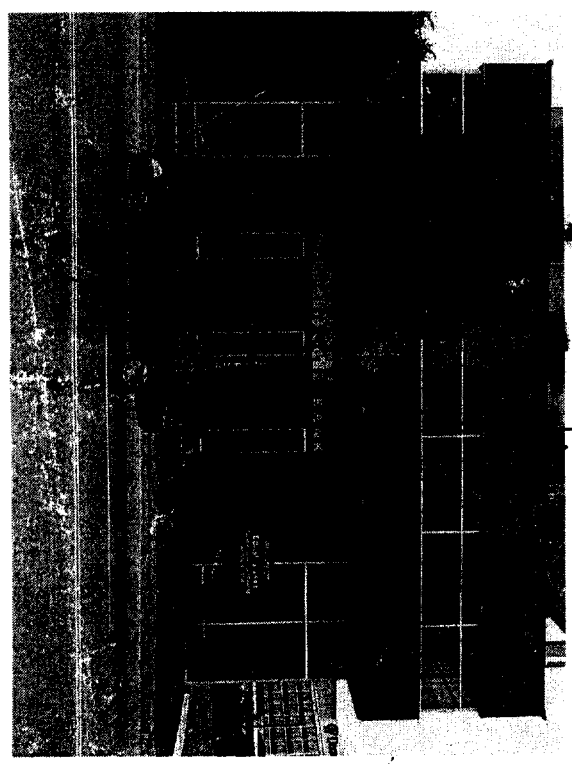


1) 90/30  
 2) 12/30  
 1) 25/30

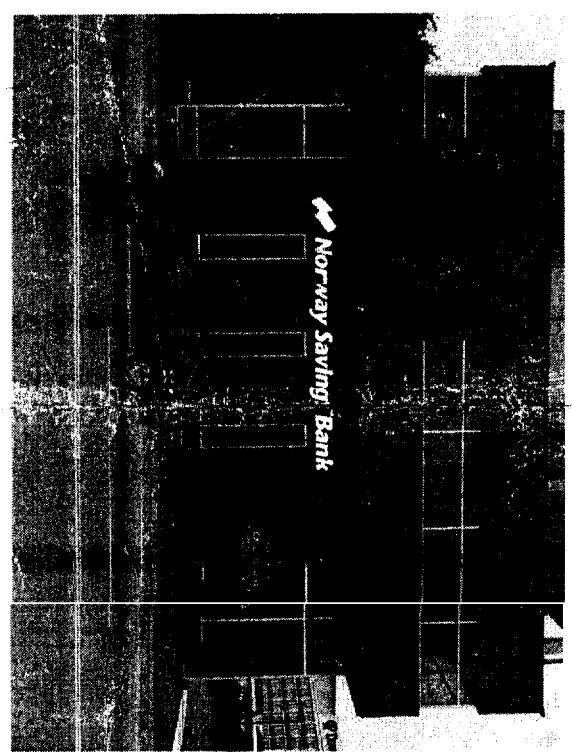
WHITE TRANSLUCENT FACES,  
 COPY: WHITE TRANSLUCENT FACES, BRONZE ALUMINUM  
 RETURNS, GRAY-BRONZE TRIM CAPS  
 LOGO: WHITE TRANSLUCENT FACE, GSP VIVID GREEN TRANSL  
 [230-156] VINYL UPPER LOGO AND GSP INTENSE BLUE TRANSL  
 [230-127] VINYL LOWER LOGO TRIM AND RETURNS, BRONZE  
 ALUMINUM RETURNS, GRAY-BRONZE TRIM CAPS  
 ALUMINUM RACEWAYS PAINTED TO MATCH WALL

APR 2018 GSP Renovations High on Bank

Lighted Wall Letters  
 Scale: 1/4"=1'-0"



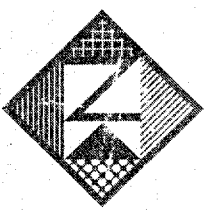
EXISTING



PROPOSED EXISTING

NEW ELEVATION

Photo Composites  
 Not to Scale



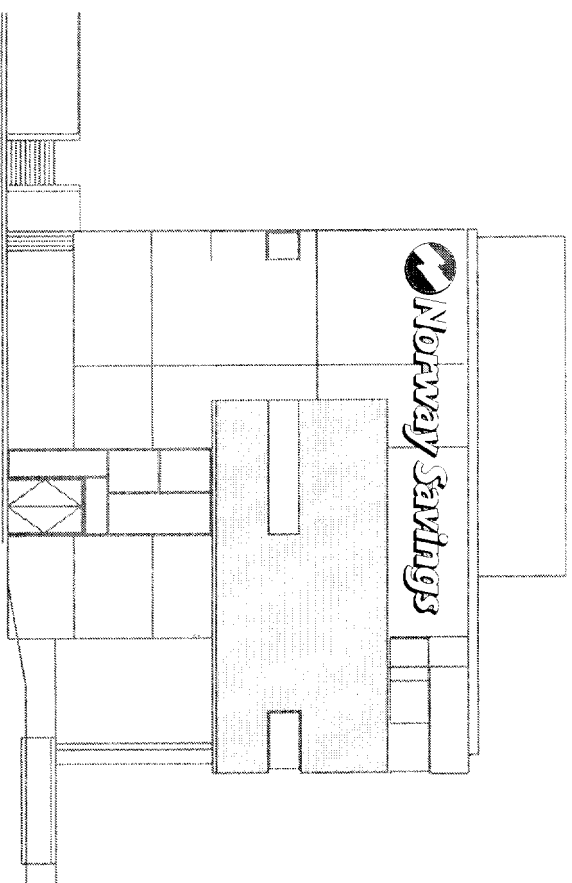
Neokraft

Neokraft Signs Inc.  
 686 Main Street  
 Lewiston, Maine 04240  
 Telephone: 207.782.9654  
 Facsimile: 207.782.0009  
 1.800.339.2258  
<http://www.neokraft.com>  
 Custom Sign Fabrication

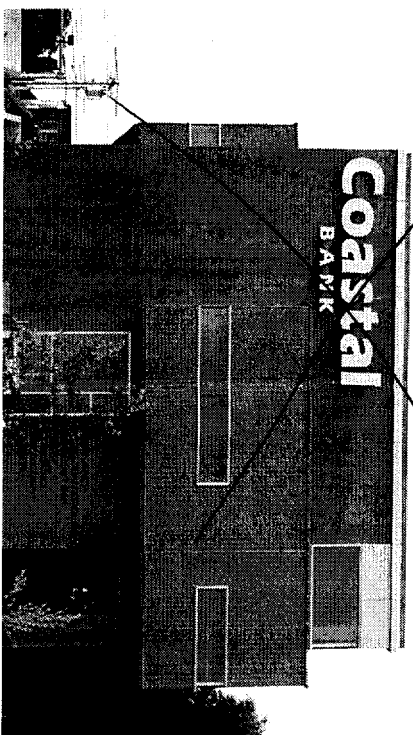
All ideas, plans or arrangements indicated on this drawing are copyrighted and owned by Neokraft Signs Inc. and shall not be reproduced, used by or disclosed to any person, firm or corporation without written permission of Neokraft Signs Inc.

**Norway Savings**  
 CL9862

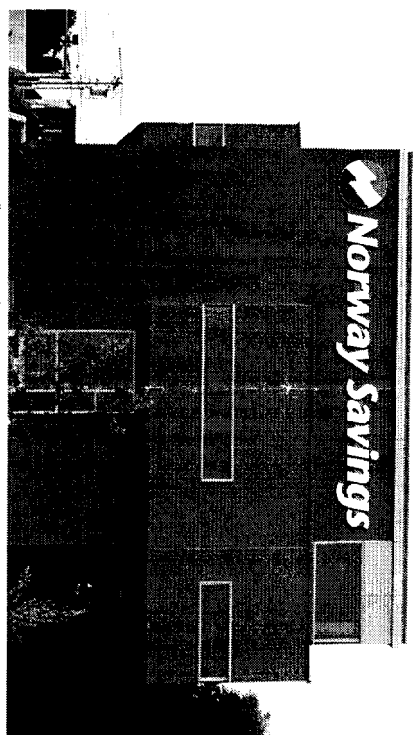
Location:	1200 Congress St. Portland, ME
Drawing No.:	5 of 8
Drawn by:	J. Fogg
Date:	08.02.2001
Gen Ref:	



**South Elevation**  
**Scale: 1"=20'-0"**

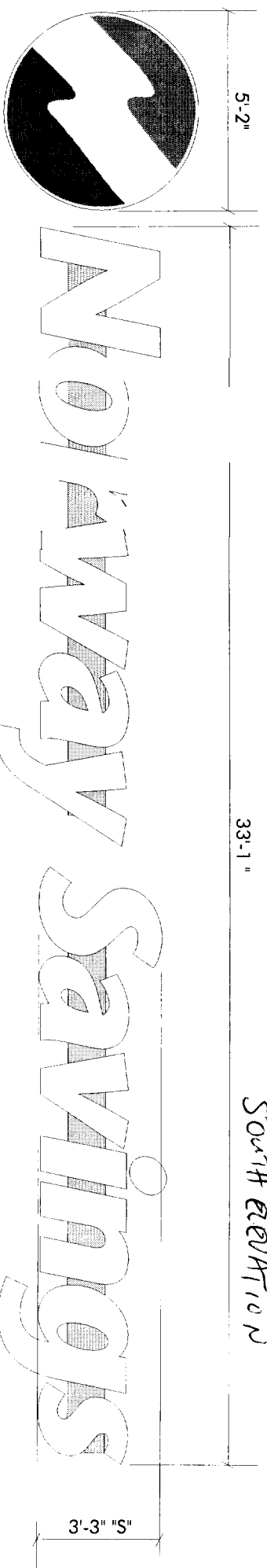


~~EXISTING~~



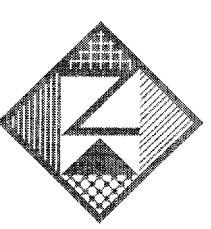
~~PROPOSED~~ EXISTING

Photo Composites  
Not to Scale



**Lighted Wall Letters with Raceways**  
**Scale: 1/4"=1'-0"**

- WHITE TRANSLUCENT FACES,
- COPY: WHITE TRANSLUCENT FACES, BRONZE ALUMINUM RETURNS, GRAY-BRONZE TRIM CAPS
- LOGO: WHITE TRANSLUCENT FACE, GSP VIVID GREEN TRANSL [230-156] VINYL UPPER LOGO AND GSP INTENSE BLUE TRANSL [230-127] VINYL LOWER LOGO TRIM AND RETURNS, BRONZE ALUMINUM RETURNS, GRAY-BRONZE TRIM CAPS
- HIGH PHOS TUBE ILLUMINATION WITH 30 MA TRANSFORMERS
- WALLS ARE DRYPIT
- ALUMINUM RACEWAYS PAINTED TO MATCH WALL



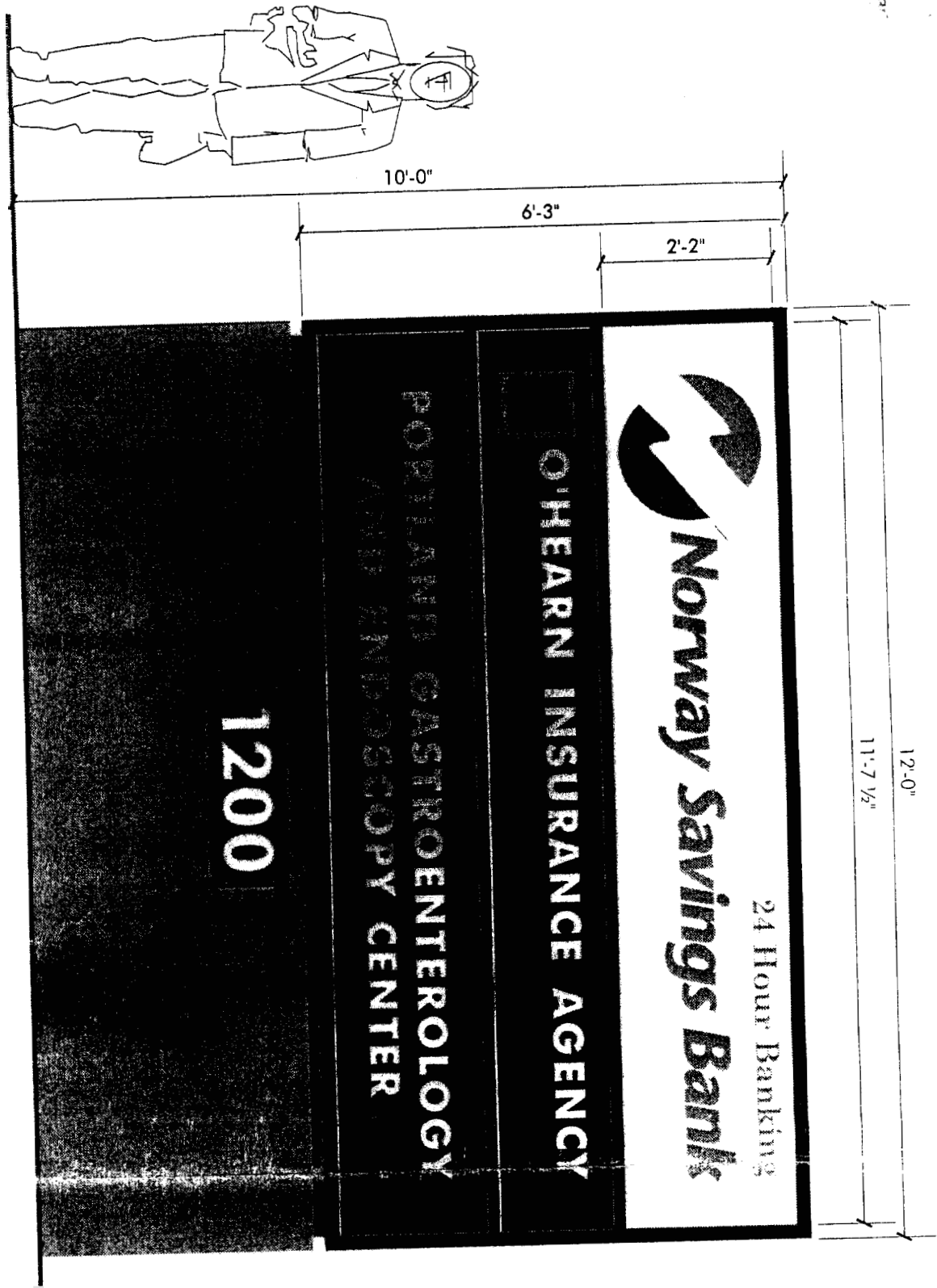
**Neokraft**

Neokraft Signs Inc.  
 686 Main Street  
 Lewiston, Maine 04240  
 Telephone: 207.782.9654  
 Facsimile: 207.782.0009  
 1.800.339.2258  
<http://www.neokraft.com>  
 Custom Sign Fabrication

All ideas, plans or arrangements indicated on this drawing are copyrighted and owned by Neokraft Signs Inc. and shall not be reproduced, used by or disclosed to any person, firm or corporation without written permission of Neokraft Signs Inc.

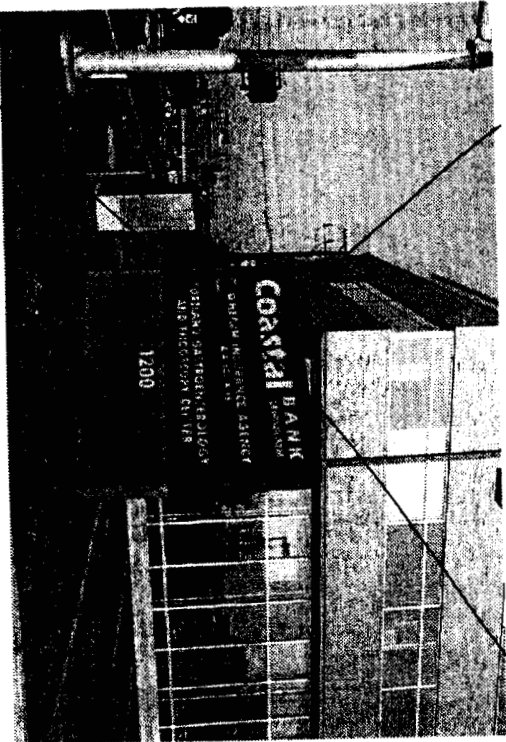
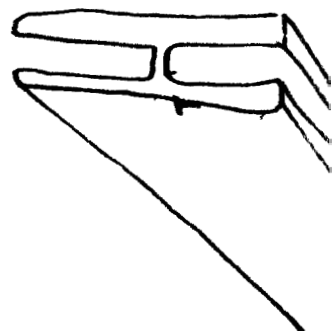
**Norway Savings**  
**CL9862**

Location:	1200 Congress St. Portland, ME
Drawing No.:	2 of 8
Drawn by:	J. Fogg
Date:	08.02.2001
Gen Ref.:	

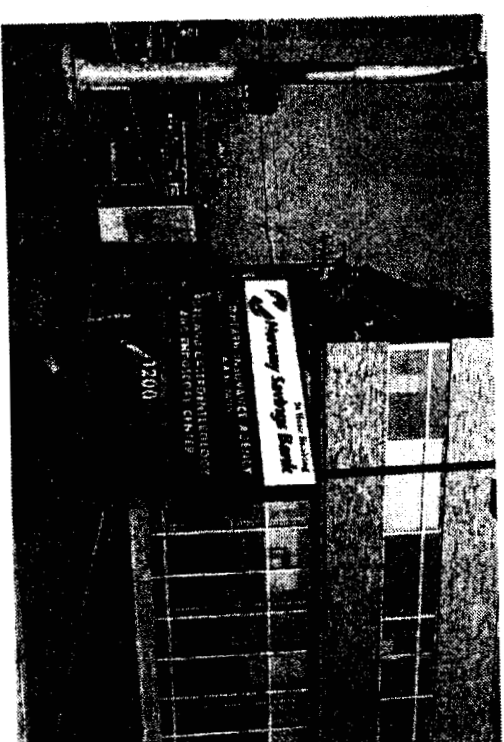


WHITE LEXAN FACES  
 GSP VIVID GREEN TRANSL [230-156] VINYL (EXCEPT GSP  
 INTENSE BLUE TRANSL [230-127] AT LOWER LOGO)

Sign Elevation—**New Faces for Single Face Internally Illuminated Orion Directory Sign**  
 Scale: 1/2" = 1'-0" (1) required



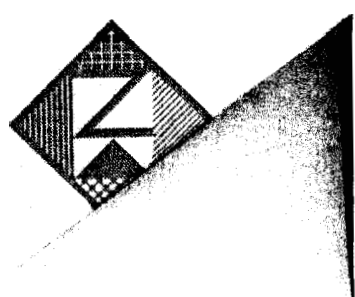
EXISTING



PROPOSED

*EXISTING*

Photo Composites  
 Not to Scale



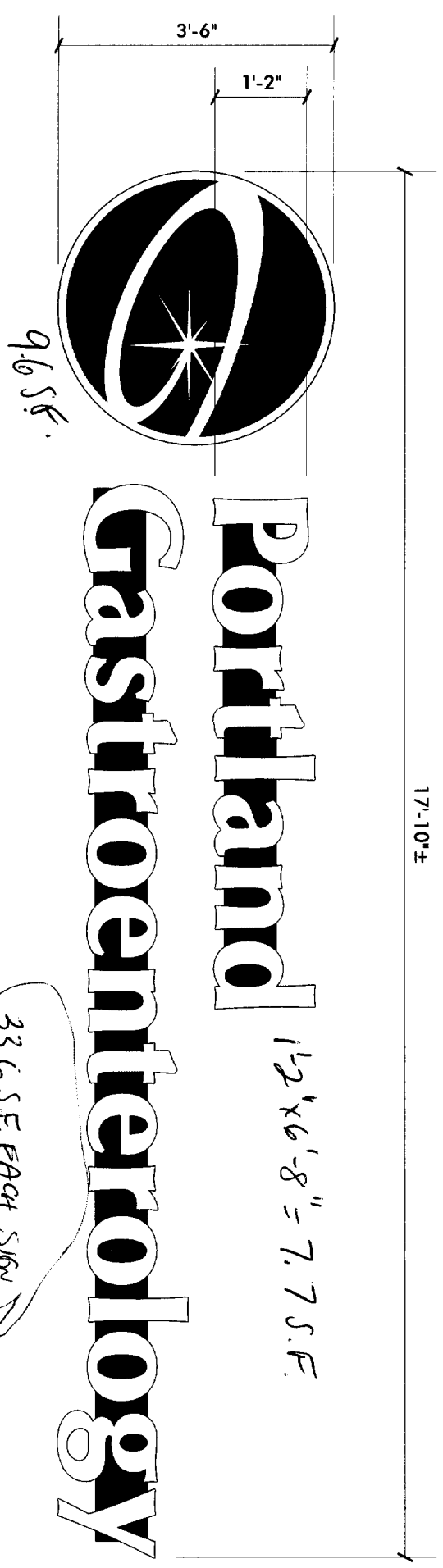
**Neokraft**

Neokraft Signs Inc.  
 686 Main Street  
 Lewiston, Maine 04240  
 Telephone: 207.782.9654  
 Facsimile: 207.782.0009  
 1.800.339.2258  
 http://www.neokraft.com

Custom Sign Fabrication  
 All ideas, plans or arrangements indicated on this drawing are copyrighted and owned by Neokraft Signs Inc. and shall not be reproduced, used by or disclosed to any person, firm or corporation without written permission of Neokraft Signs Inc.

**Shop Drawing**  
**Norway Savings**  
**CL9862**

Location:	1200 Congress St.
	Portland, ME
Drawing No.:	1 of 10
Drawn by:	J. Fogg
Date:	07.26.2001
Can Raf.	



**Portland**  
**Gastroenterology**

1 1/2' x 6'-8" = 7.7 S.F.

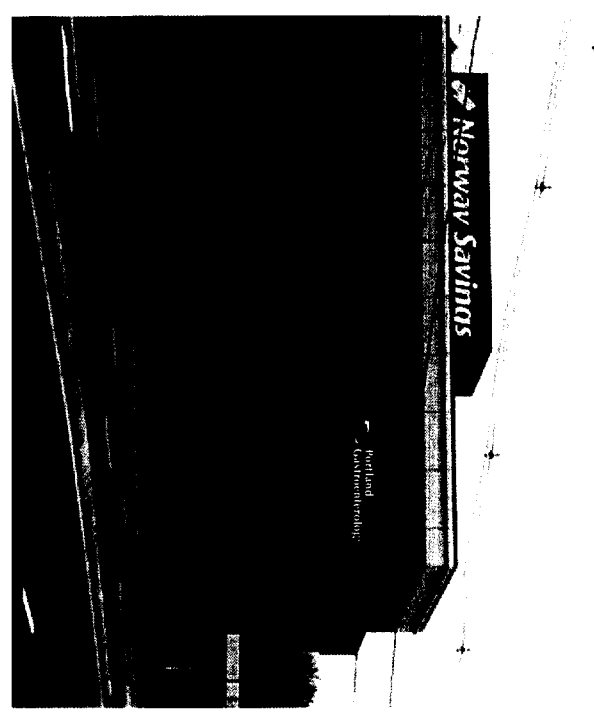
1 1/2" x 13'-11" = 16.3 S.F.

WHITE FACES, BLUE TRIM & RETURNS  
 GSP DELFT BLUE TRANSL [230-97] VINYL ON LOGO  
 RACEWAYS REQUIRED, PAINT TO MATCH BACKGROUNDS

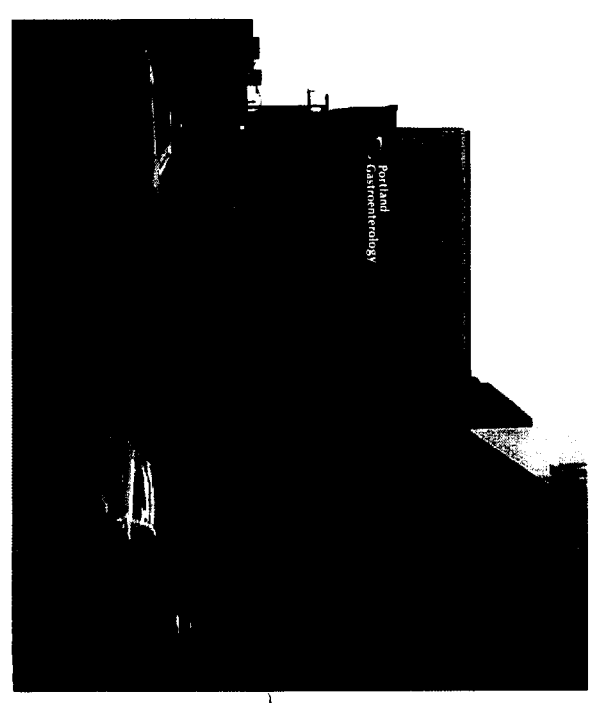
INTERNALLY ILLUMINATED LETTERS ON RACEWAYS  
 SCALE: 1/2" = 1'-0" (2) SETS REQUIRED

147 x 45 = 6615 + 5% = 6945.75  
 443.25' MAX

33.6 S.F. EACH SIGN  
 TOTAL: 67.2



EAST ELEVATION

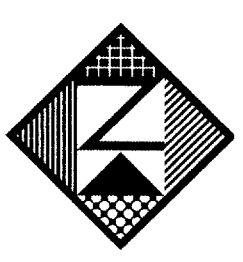


WEST ELEVATION

NOT TO SCALE

197 x 53 = 10441.56 = 522.05' MAX

per Neokraft  
 11/9/04 David  
 Expansion Anchors in Brick with Bolts



**Neokraft**  
 S I G N S

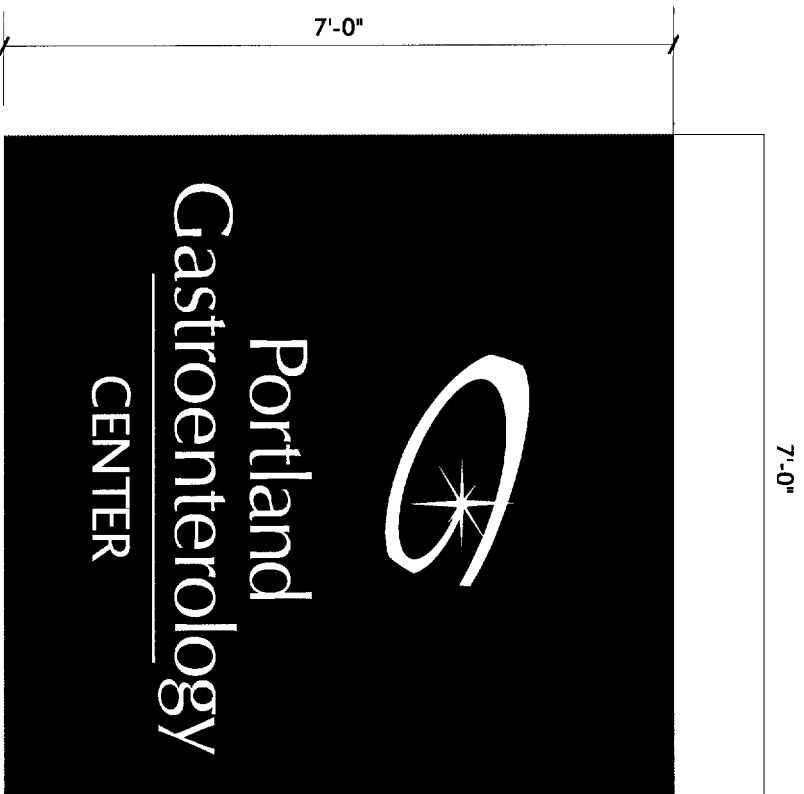
Neokraft Signs Inc.  
 686 Main Street  
 Lewiston, Maine 04240  
 Telephone: 207.782.9654  
 Facsimile: 207.782.0009  
 1.800.339.2258  
<http://www.neokraft.com>

Custom Sign Fabrication

Except for designs supplied by the client, all ideas, plans or arrangements indicated on this drawing are copyrighted and owned by Neokraft Signs Inc. and shall not be reproduced, used by or disclosed to any person, firm or corporation without written permission of Neokraft Signs Inc.

**Portland**  
**Gastroenterology**  
**FL002268**

Location:	1200 Congress St. Portland, ME
Drawing No.:	1 of 5
Drawn by:	DS
Date:	07.20.2004
Revised:	08.09.2004, 09.21.2004
Gen Ref.:	

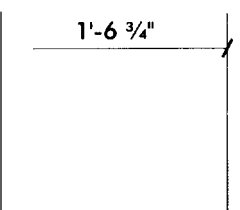
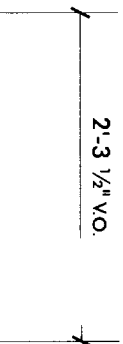


INTERNALLY ILLUMINATED WALL SIGN  
SCALE: 1/2" = 1'-0" (1) REQUIRED

SOUTH ELEVATION

49 S.F.

6" ± DEEP  
ALUMINUM CABINET AND BLEED FACE,  
PAINTED TO MATCH DRY-VIT WALL  
PUSH-THRU ACRYLIC LOGO, 1/2" ±  
PROJECTION FOR EDGE-GLOW, WHITE  
TRANSLUCENT, 1ST-SURFACE GSP DELFT  
BLUE TRANSL [230-97] VINYL  
PUSH-THRU ACRYLIC TEXT, WHITE  
TRANSLUCENT, FLUSH TO FACE



WHITE AND GSP DELFT BLUE TRANSL [230-97] VINYL

VINYL GRAPHICS FOR DOOR GLASS  
SCALE: 3/4" = 1'-0" (1) REQUIRED

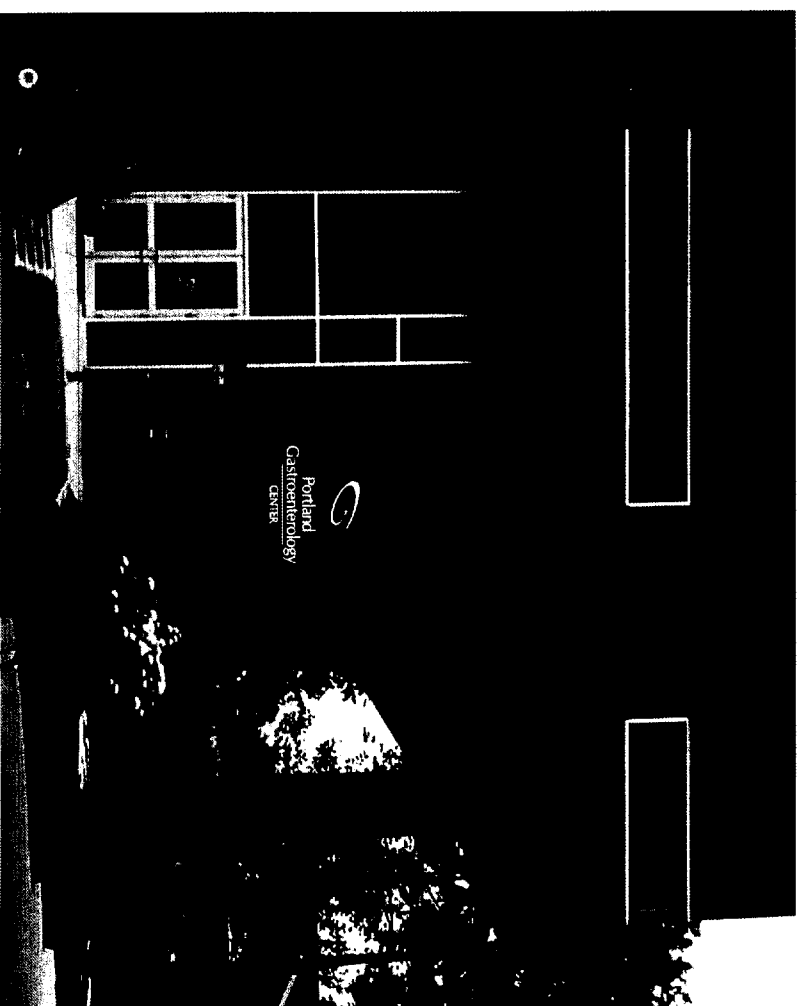
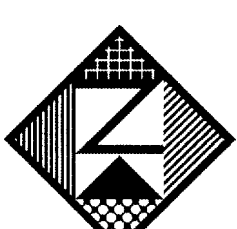


PHOTO-COMPOSITE  
NOT TO SCALE

SOUTH ELEVATION



Neokraft  
SIGN S

Neokraft Signs Inc.  
686 Main Street  
Lewiston, Maine 04240  
Telephone: 207.782.9654  
Facsimile: 207.782.0009  
1.800.339.2258  
<http://www.neokraft.com>  
Custom Sign Fabrication

Except for designs supplied by the client, all ideas, plans or arrangements indicated on this drawing are copyrighted and owned by Neokraft Signs Inc. and shall not be reproduced, used by or disclosed to any person, firm or corporation without written permission of Neokraft Signs Inc.

**Portland  
Gastroenterology  
FL002268**

Location:	1200 Congress St. Portland, ME
Drawing No.:	3 of 5
Drawn by:	DS
Date:	07.20.2004
Revised:	08.09.2004, 09.21.2004
Gen Ref.:	