



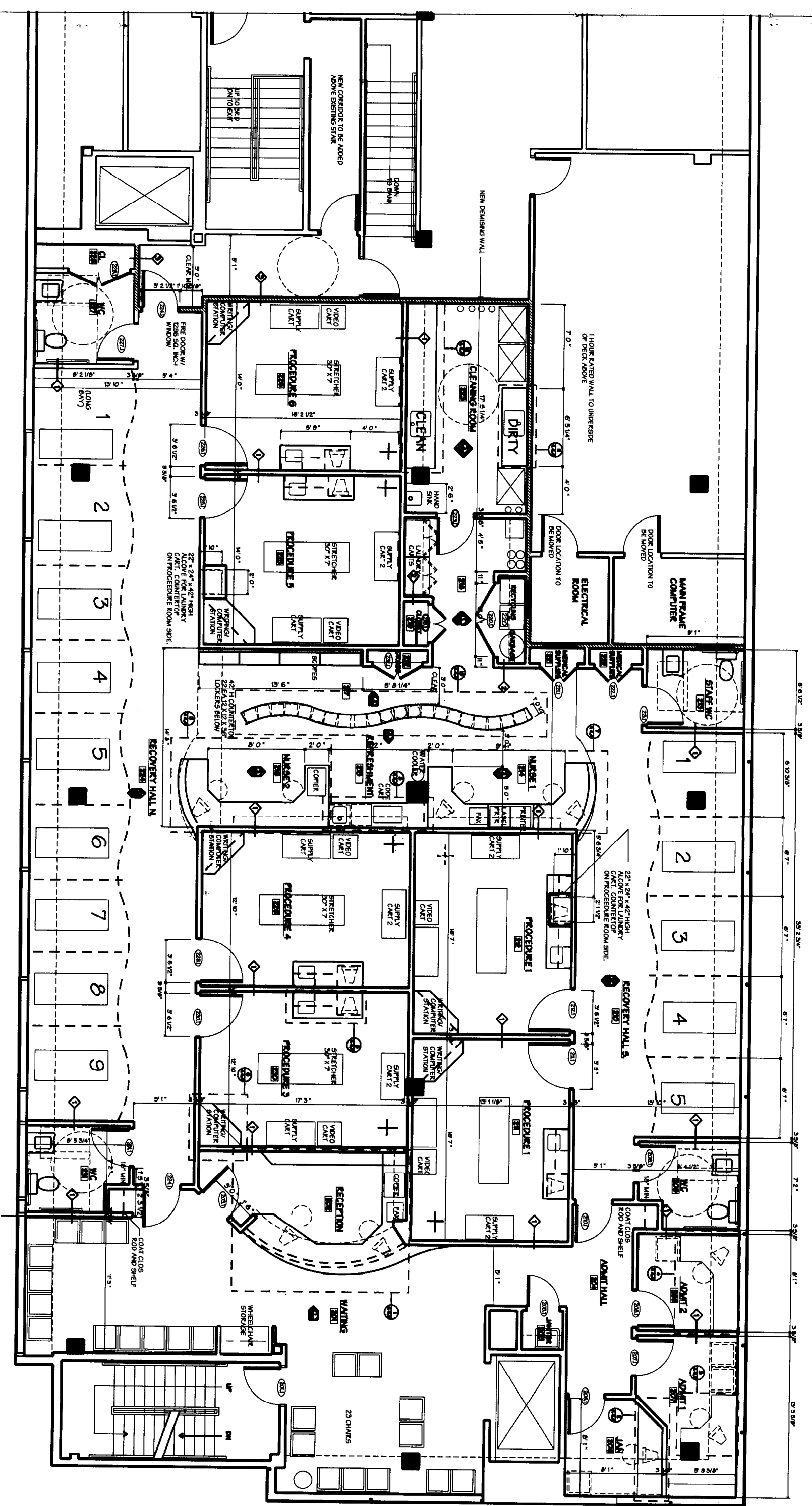
PORTLAND GASTROENTEROLOGY
1200 CONGRESS STREET PORTLAND

WHITFIELD CALDWELL ARCHITECTS

NEW CONSTRUCTION
PROJECT NUMBER
SCALE AS NOTED
DATE
DRAWN
CHECKED
APPROVED

SECOND FLOOR PLAN

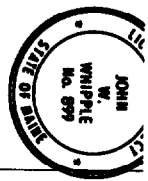
AI.I



ENDOSCOPY SUITE

SCALE 1/4" = 1'

BID SET - NOT FOR CONSTRUCTION

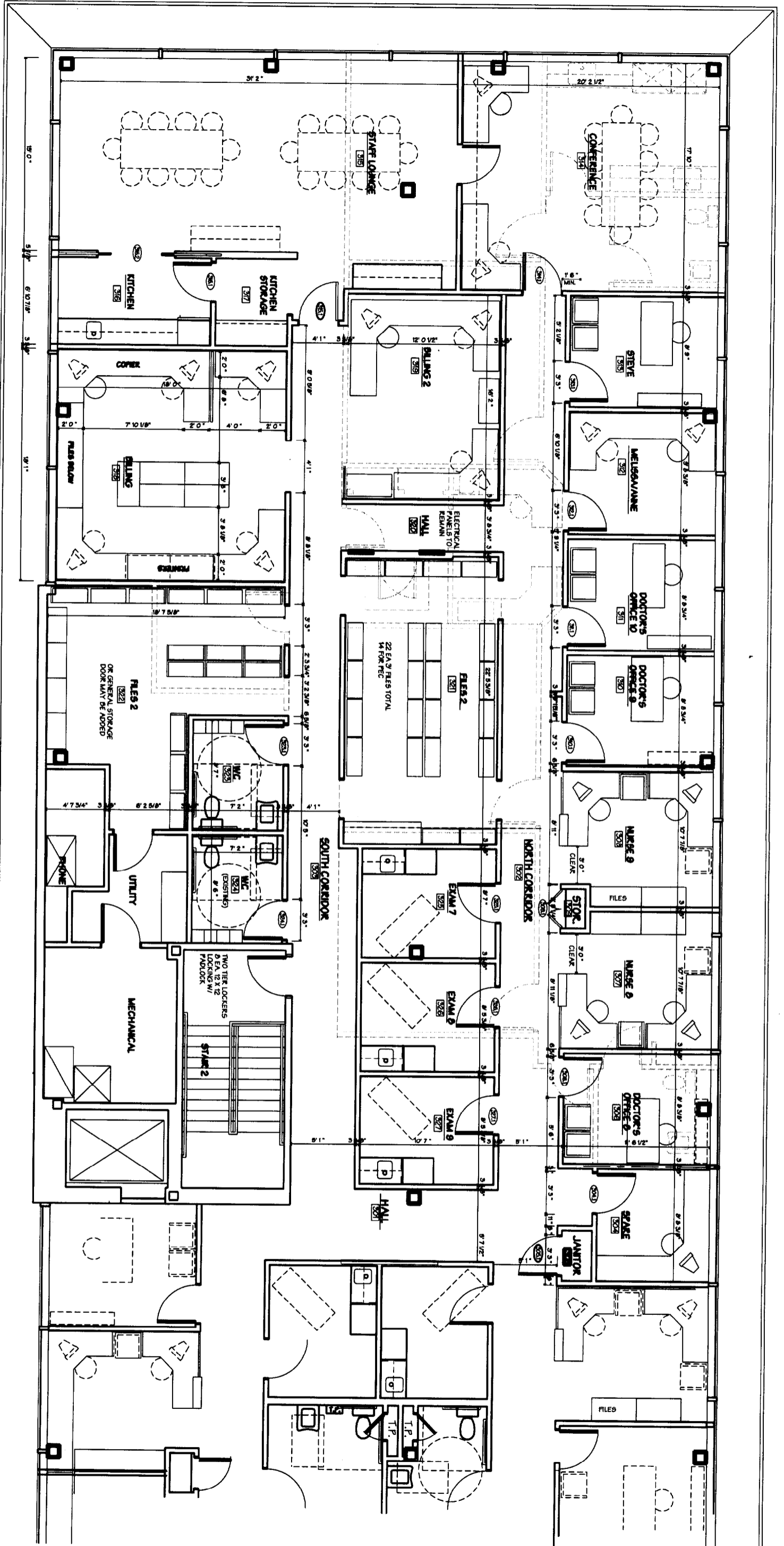


PORTLAND GASTROENTEROLOGY
 1200 CONGRESS STREET PORTLAND

**WHIPPLE
 CALLENDER
 ARCHITECTS**

DATE: 8/20/03
 PROJECT: RENOVATION
 SCALE: AS NOTED
 DRAWN: JWH/ML
 CHECKED: JWH/ML
 APPROVED: JWH/ML
 GENERAL CONTRACTOR: THIRD FLOOR PLAN

PROJECT ID: **A11.2**



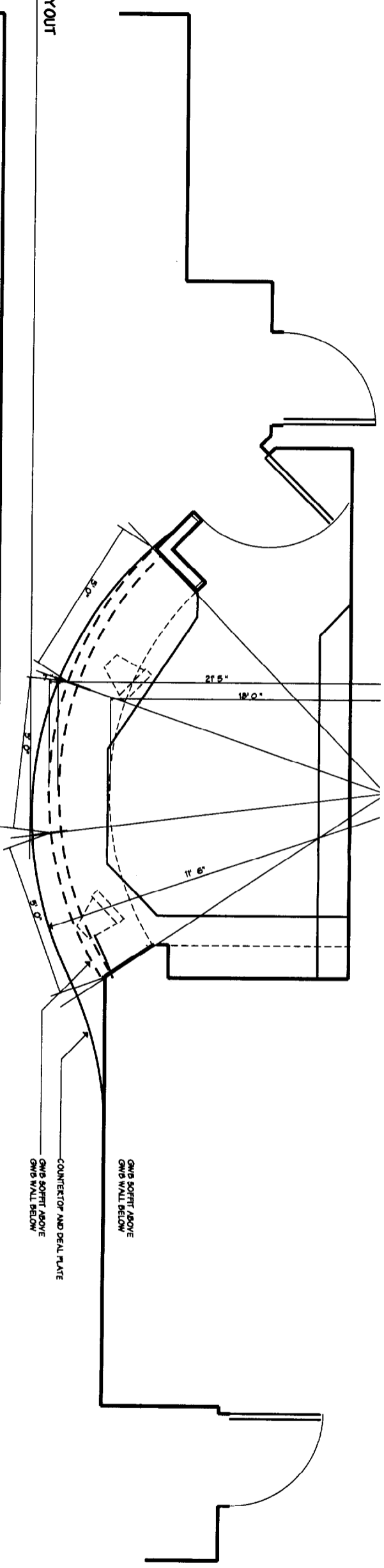
3RD FLOOR OFFICE RENOVATION

SCALE 1/4" = 1'

NOT FOR CONSTRUCTION

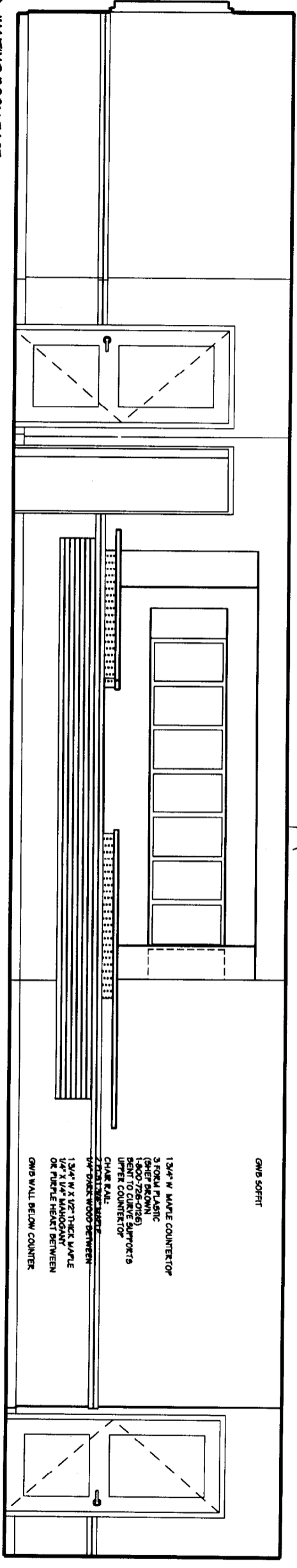
1
A21

FRONT DESK LAYOUT
3/8" = 1'-0"



2
A21

WAITING ROOM EAST
3/8" = 1'-0"



DATE: 02/03/03
 DRAWN BY: JMW
 CHECKED BY: JMW
 SCALE: 1/2" = 1'-0"
 SHEET NO.: 1/11
 PROJECT NO.: 02-03-03
 CLIENT: PORTLAND GASTROENTEROLOGY



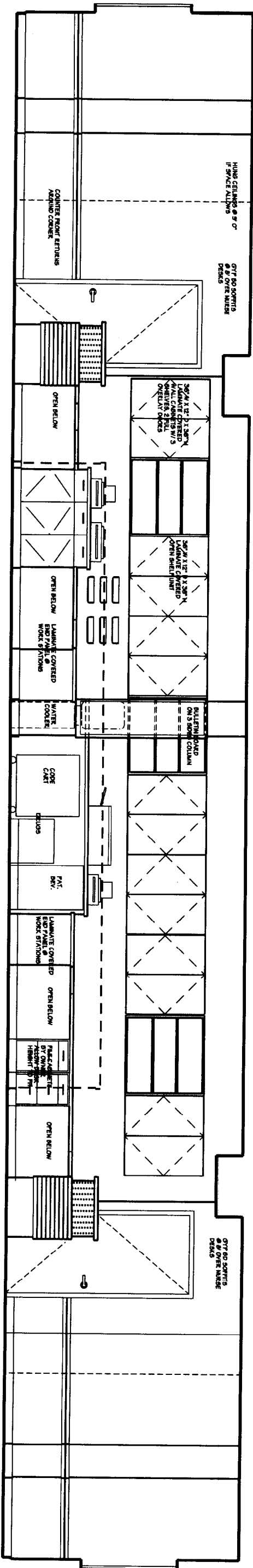
PORTLAND GASTROENTEROLOGY
 COASTAL BANK HEADQUARTERS BUILDING
 PORTLAND
 CONGRESS ST.
 MAINE

**WHITTLE
 CALENDER
 ARCHITECTS**

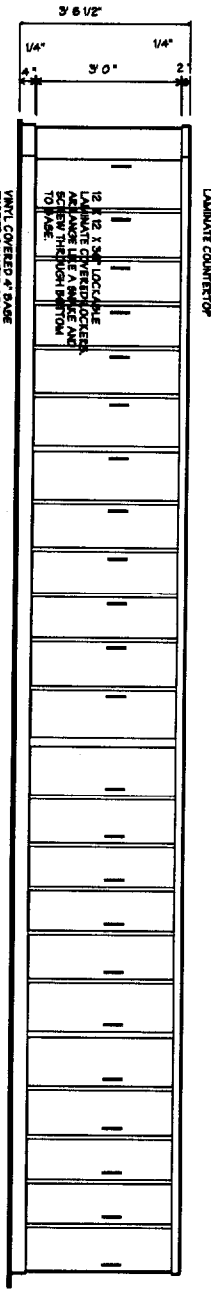
100 CONGRESS
 STREET
 PORTLAND
 MAINE
 04103
 726-0195

DATE: 02/03/03
 DRAWN BY: JMW
 CHECKED BY: JMW
 SCALE: 1/2" = 1'-0"
 SHEET NO.: 1/11
 PROJECT NO.: 02-03-03
 CLIENT: PORTLAND GASTROENTEROLOGY

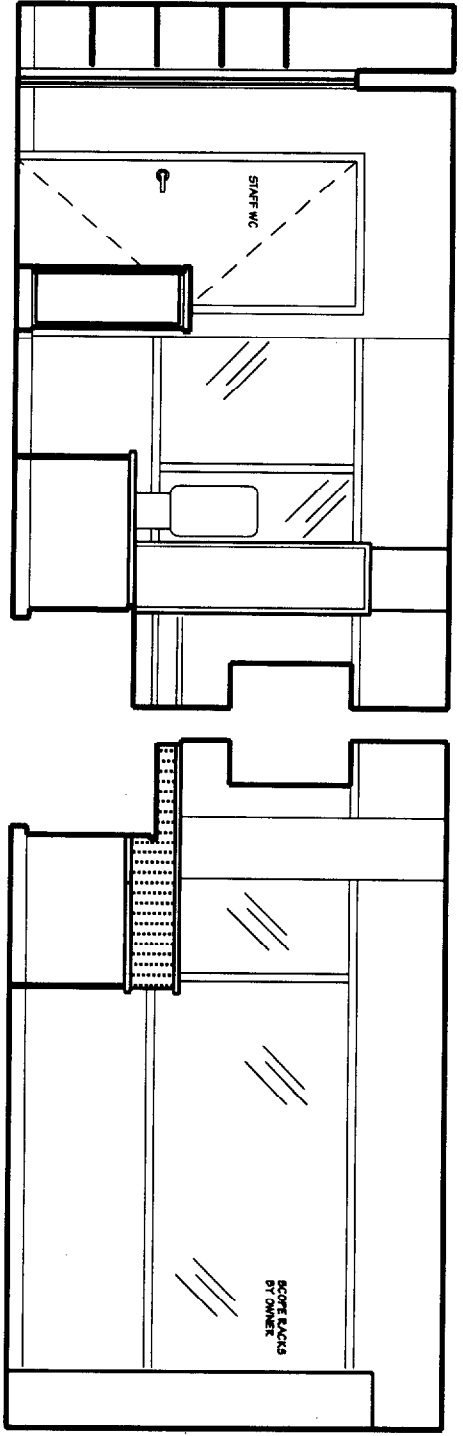
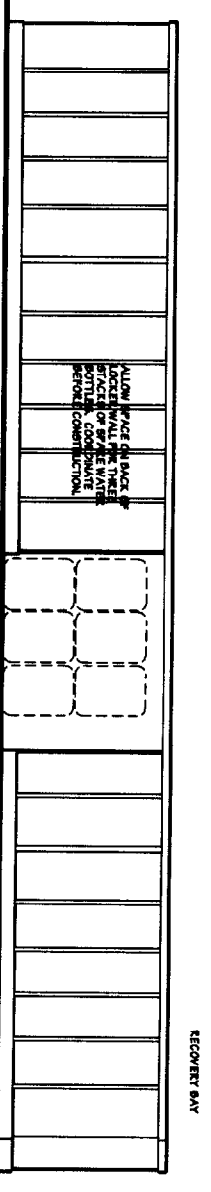
02/03/03



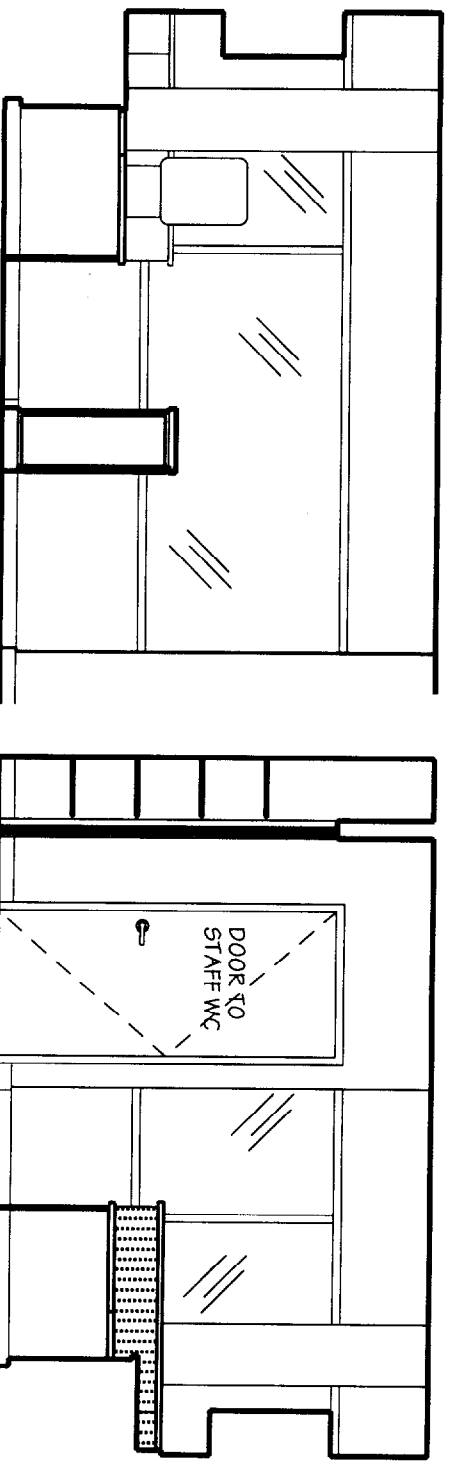
1 ELEVATIONS @ NURSE STATIONS
VF = 1'-0"



2 WRITING COUNTER W/ LOCKERS UNDER
VF = 1'-0"



3 ELEVATIONS @ NURSE STATIONS
VF = 1'-0"



BID SET - NOT FOR CONSTRUCTION



PORTLAND GASTROENTEROLOGY
COASTAL BANK HEADQUARTERS BUILDING CONGRESS ST. PORTLAND MAINE

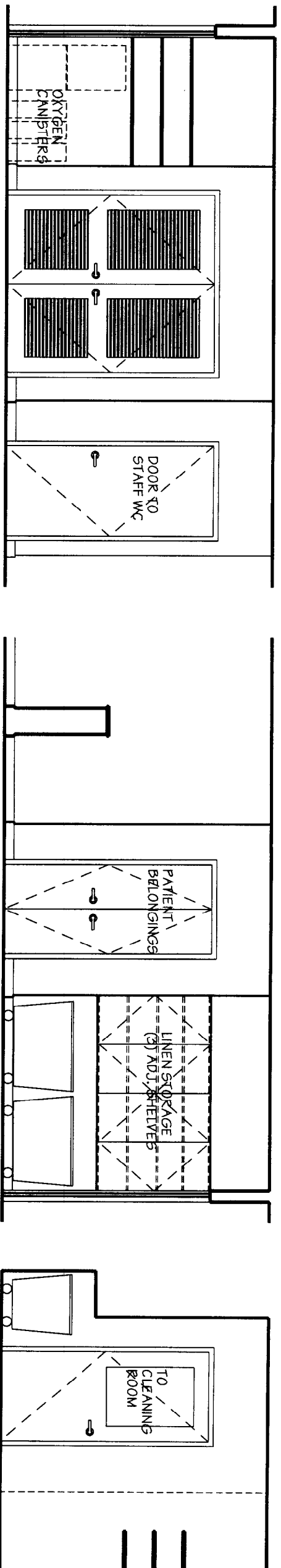
WHITTE CALLENDER ARCHITECTS

JOHN CALDWELL
PROJECT MANAGER
775-5555

DATE 2/20/02
PROJECT PORTLAND GASTROENTEROLOGY
SCALE 1/2" = 1'-0"
DESIGNED BY JWC
CHECKED BY JWC
DATE 2/20/02

Sheet 1 of 4

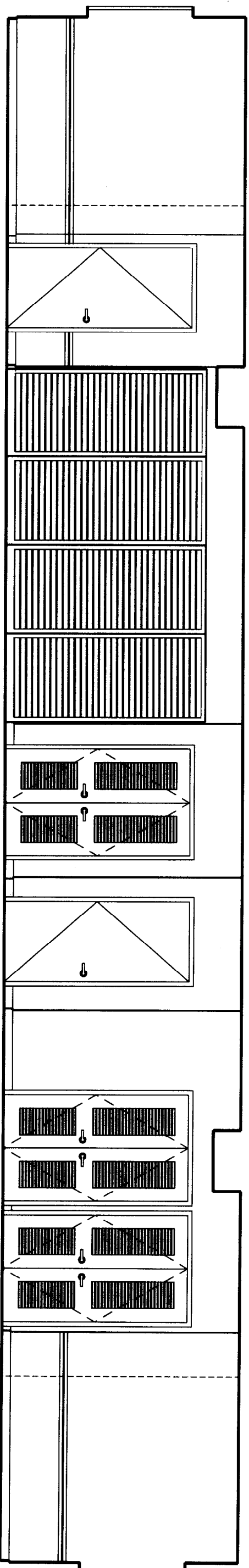
A292



1 SOUTH ELEVATION OUTSIDE CLEANING ROOM
A2.3
1/8" = 1'-0"

NORTH ELEVATION OUTSIDE CLEANING ROOM

WEST ELEVATION OUTSIDE CLEANING ROOM

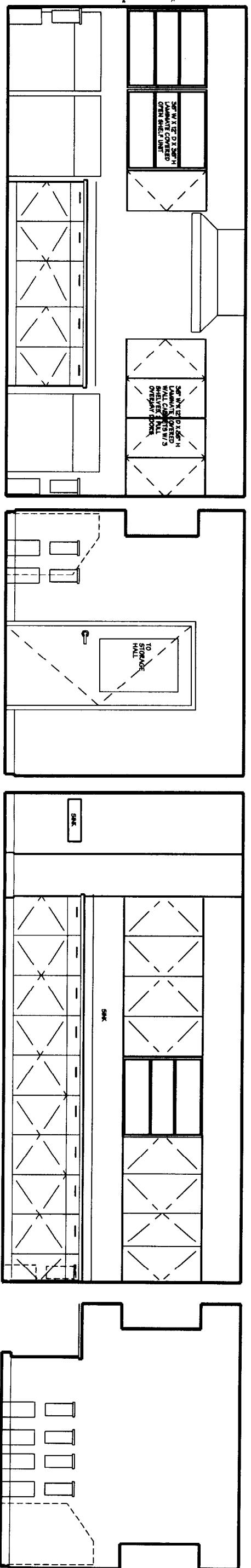


2 WEST ELEVATIONS @ NURSE STATION
A2.3
1/8" = 1'-0"

RECOVERY BAY
SCOPE RACKS BY OWNER
COORDINATE FIT

SUPPLIES

RECOVERY BAY



3 ELEVATIONS @ CLEANING ROOM
A2.3
1/8" = 1'-0"



PORTLAND GASTROENTEROLOGY

COASTAL BANK HEADQUARTERS BUILDING
PORTLAND

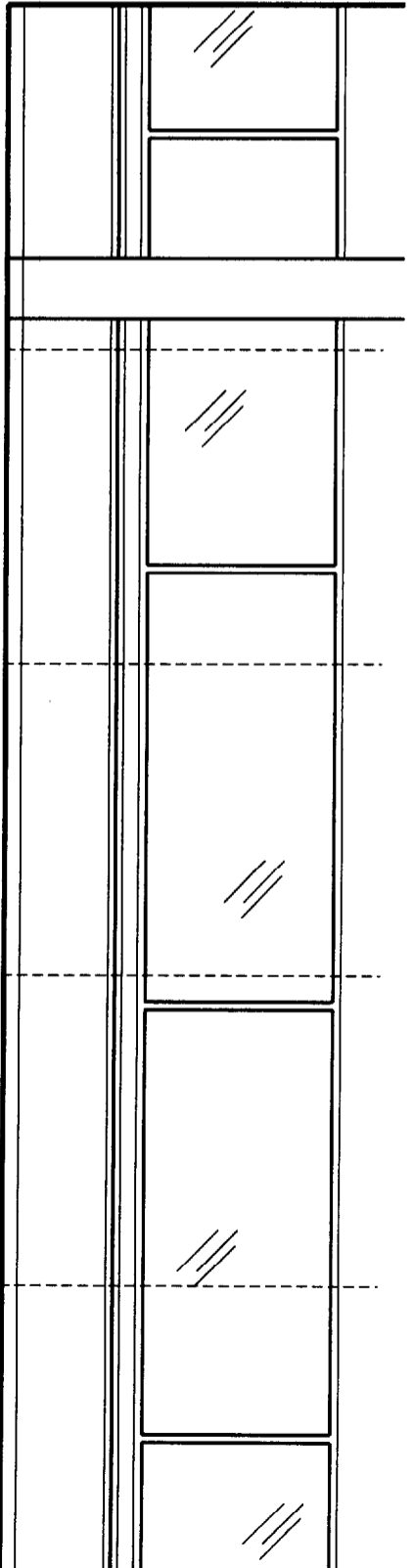
CONGRESS ST.
MAINE

SHARPLE
CALLENDER
ARCHITECTS

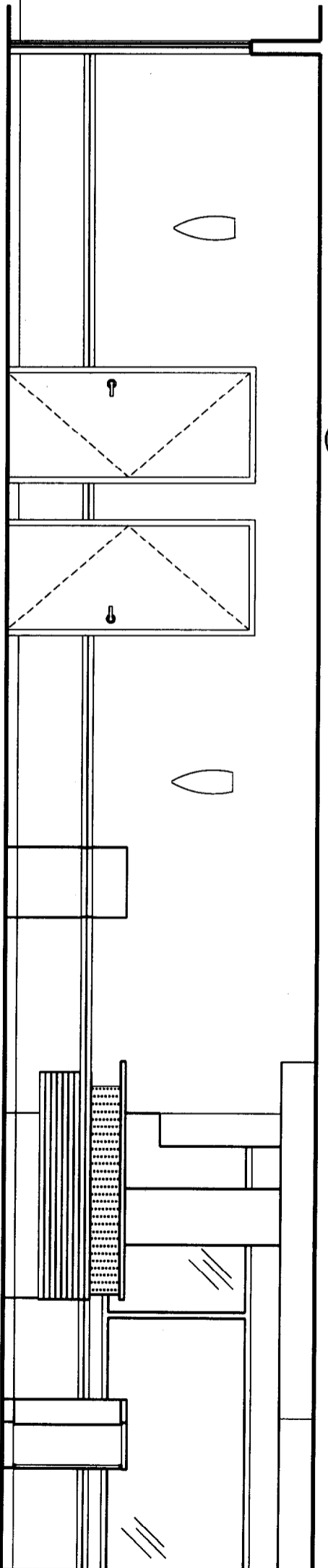
100 GARDEN
STREET
PORTLAND
MAINE
04106

DATE: 8/20/03
PROJECT: PORTLAND GASTROENTEROLOGY
SCALE: 1/8" = 1'-0"
DRAWN: J. CALLENDER
CHECKED: J. CALLENDER
CONTRACT: INTERIOR ELEVATIONS

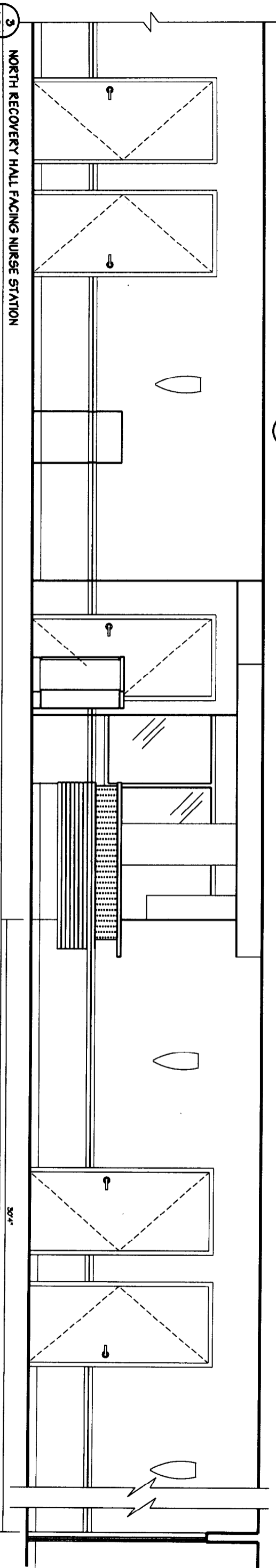
12.3



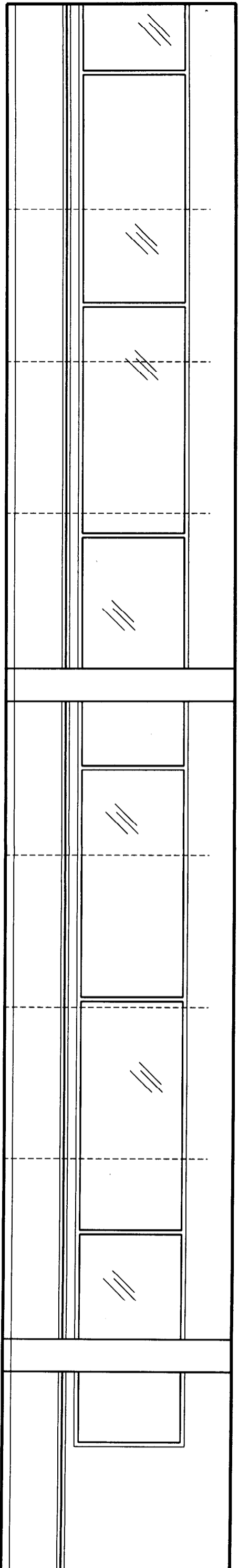
1 SOUTH RECOVERY HALL
SCALE 1/2" = 1'-0"



3 SOUTH RECOVERY HALL FACING NURSE STATION
SCALE 1/2" = 1'-0"



3 NORTH RECOVERY HALL FACING NURSE STATION
SCALE 1/2" = 1'-0"



4 NORTH RECOVERY HALL
SCALE 1/2" = 1'-0"



PORTLAND GASTROENTEROLOGY
COASTAL BANK HEADQUARTERS BUILDING
PORTLAND CONGRESS ST. MAINE

WHITTLE
CALENDER
ARCHITECTS
100 CONGRESS
STREET
PORTLAND
MAINE 04101
736-2666

DATE: 8/20/04
PROJECT: PORTLAND
SCALE: 1/2" = 1'-0"
DESIGNER: [blank]
DRAWN BY: [blank]
CHECKED BY: [blank]
CONTRACT NO.: [blank]
INTERIOR
ELEVATIONS

SHEET 1 of
A204

FINISH SCHEDULE table with columns: #, ROOM, FLOOR, BASE, WALLS (N, E, S, W), ELEVATION, COMMENTS. Rows include 301 HALL, 302 SOUTH CORRIDOR, 303 NORTH CORRIDOR, etc.

NOTE: ALL FINISHES THIS LEVEL TO MATCH EXISTING COLORS/PRODUCTS

HARDWARE GROUPS

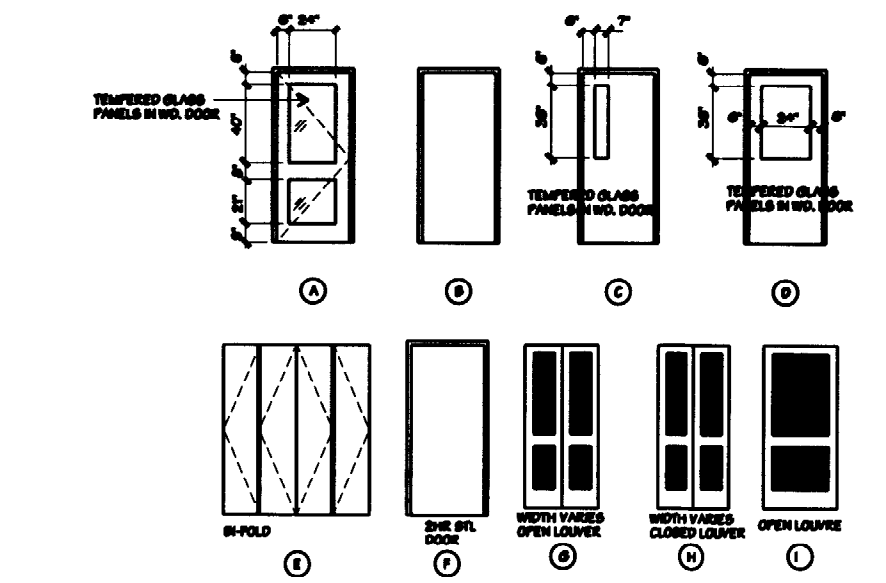
- A LEVER HANDLE LOCKSET: OFFICE FUNCTION
B LEVER HANDLE PRIVACY SET
C LEVER HANDLE PASSAGE SET
D LEVER HANDLE LOCKSET: CLASSROOM FUNCTION
E LEVER HANDLE PASSAGE SET
F LEVER HANDLE LOCKSET: CLASSROOM FUNCTION
G LEVER HANDLE LOCKSET: OFFICE FUNCTION
H RECESSED POCKETING DOOR
I LEVER HANDLE LOCKSET: STOREROOM FUNCTION
J BI-FOLD DOOR TRACK
K LEVER HANDLE LOCKSET: CLASSROOM FUNCTION
L LEVER HANDLE LOCKSET: KEYED LOCK
M 3/4" STAYLE FULL W/ SELF CLOSING HINGES
N 1 1/2 PINE HINGES
O LEVER HANDLE LOCKSET: VESTIBULE FUNCTION

HARDWARE NOTES

- 1. VESTIBULE FUNCTION: UNLOCK w/KEY FROM OUTSIDE WHEN LOCKED w/KEY FROM INSIDE.
2. OFFICE FUNCTION: PUSH BUTTON LOCKING. PUSH BUTTON LOCKS OUTSIDE LEVER UNTIL UNLOCKED w/KEY FROM OUTSIDE or TURNING INSIDE LEVER.
3. CLASSROOM FUNCTION: OUTSIDE LEVER LOCKED and UNLOCKED w/KEY. INSIDE LEVER ALWAYS UNLOCKED.
4. COMMUNICATING FUNCTION: KEY IN EITHER KNOB LOCKS or UNLOCKS EACH KNOB

FINISH SCHEDULE table with columns: #, ROOM, FLOOR, BASE, WALLS (N, E, S, W), ELEVATION, COMMENTS. Rows include 301 WAITING, 302 RECEPTION, 304 ADMIT. HALL, etc.

KEY: 0 - NONE, 1 - CHERRY, 2 - MEDIUM, 3 - WY, 4 - NONE, 5 - OAK, 6 - OAK, 7 - W. BIRCH, 8 - NONE, 9 - NONE, 10 - NONE, 11 - NONE, 12 - NONE, 13 - NONE, 14 - NONE, 15 - NONE, 16 - NONE, 17 - NONE, 18 - NONE, 19 - NONE, 20 - NONE, 21 - NONE, 22 - NONE, 23 - NONE, 24 - NONE, 25 - NONE, 26 - NONE, 27 - NONE, 28 - NONE, 29 - NONE, 30 - NONE, 31 - NONE, 32 - NONE, 33 - NONE, 34 - NONE, 35 - NONE, 36 - NONE, 37 - NONE, 38 - NONE, 39 - NONE, 40 - NONE, 41 - NONE, 42 - NONE, 43 - NONE, 44 - NONE, 45 - NONE, 46 - NONE, 47 - NONE, 48 - NONE, 49 - NONE, 50 - NONE, 51 - NONE, 52 - NONE, 53 - NONE, 54 - NONE, 55 - NONE, 56 - NONE, 57 - NONE, 58 - NONE, 59 - NONE, 60 - NONE, 61 - NONE, 62 - NONE, 63 - NONE, 64 - NONE, 65 - NONE, 66 - NONE, 67 - NONE, 68 - NONE, 69 - NONE, 70 - NONE, 71 - NONE, 72 - NONE, 73 - NONE, 74 - NONE, 75 - NONE, 76 - NONE, 77 - NONE, 78 - NONE, 79 - NONE, 80 - NONE, 81 - NONE, 82 - NONE, 83 - NONE, 84 - NONE, 85 - NONE, 86 - NONE, 87 - NONE, 88 - NONE, 89 - NONE, 90 - NONE, 91 - NONE, 92 - NONE, 93 - NONE, 94 - NONE, 95 - NONE, 96 - NONE, 97 - NONE, 98 - NONE, 99 - NONE, 100 - NONE



DOOR SCHEDULE table for FLOOR 3 with columns: #, FROM, TO, R.O., TYPE, MATL, JAMB, HOWSE GROUP, RATINGS, REMARKS. Rows include 304.1 SOUTH CORRIDOR, 305.1 JANITOR, 306.1 SOUTH CORRIDOR, etc.

NOTE: 1) ALL DOORS SOLID CORE WOOD W/ BIRCH VENEER, UNLESS OTHERWISE NOTED

SECOND FLOOR

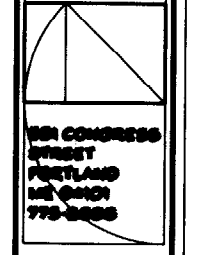
DOOR SCHEDULE table for FLOOR 2 with columns: #, FROM, TO, R.O., TYPE, MATL, JAMB, HOWSE GROUP, RATINGS, REMARKS. Rows include 201.1 WAITING 201, 202.1 WAITING 202, 203.1 JANITOR 203, etc.

NOTE: 1) ALL DOORS SOLID CORE WOOD W/ BIRCH VENEER, UNLESS OTHERWISE NOTED



PORTLAND GASTROENTEROLOGY COASTAL BANK HEADQUARTERS BUILDING PORTLAND, MAINE CONGRESS ST.

WHIPPLE CALLENDER ARCHITECTS



DATE 4 NOV. 2005

PROJECT NUMBER

SCALE AS NOTED

DRAWN BY

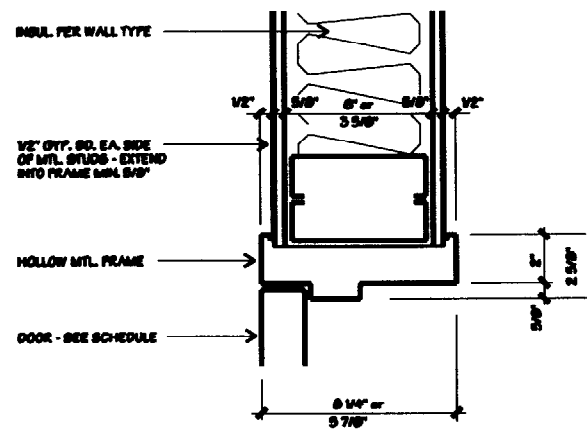
CHECKED

REVISION

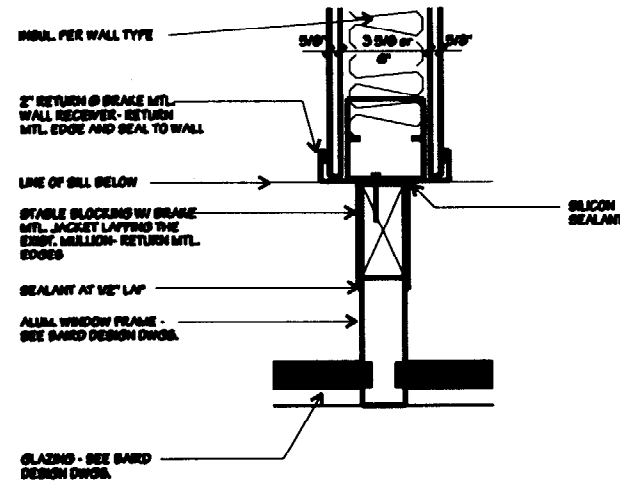
CONTAINS DOOR and HARDWARE SCHEDULES and DETAILS

SHEET of 15

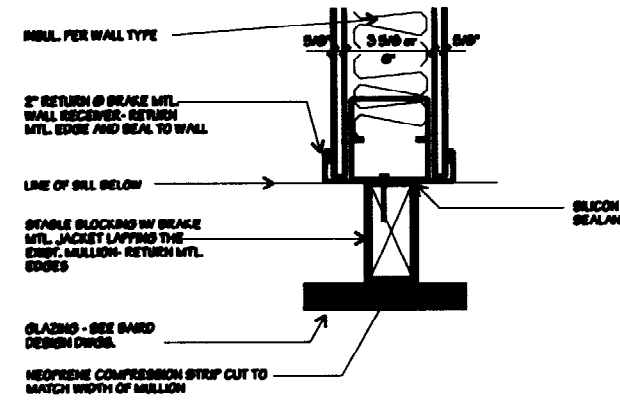
A4.1



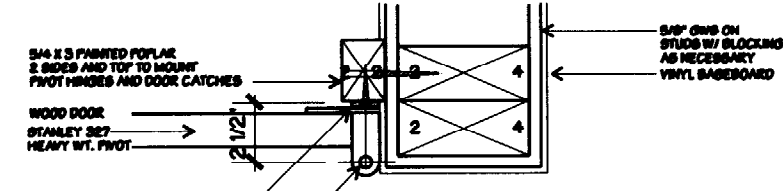
1 MTL. DOOR JAMB DETAIL @ TYP. PARTITION (HEAD SIM.)
A4.2 3" = 1' 0"



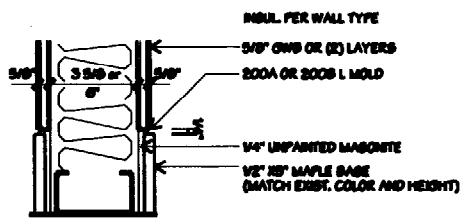
2 DETAIL @ PARTITION TO WINDOW MULLION JCT.
A4.2 3" = 1' 0"



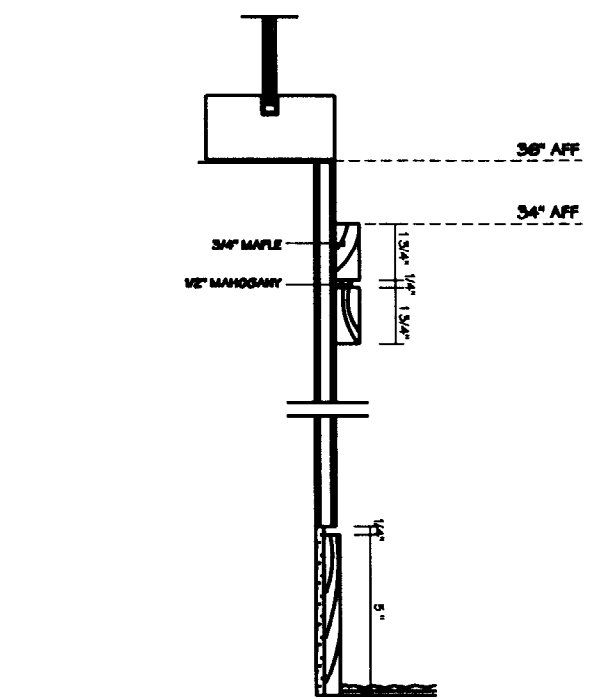
3 DETAIL @ PARTITION TO GLASS JUNCTION
A4.2 3" = 1' 0"



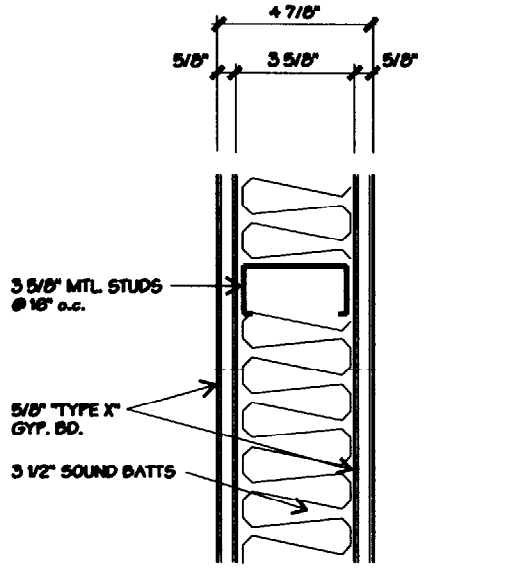
4 HINGE DETAIL @ STORAGE CLOSETS W/ PR LOUVER DOORS



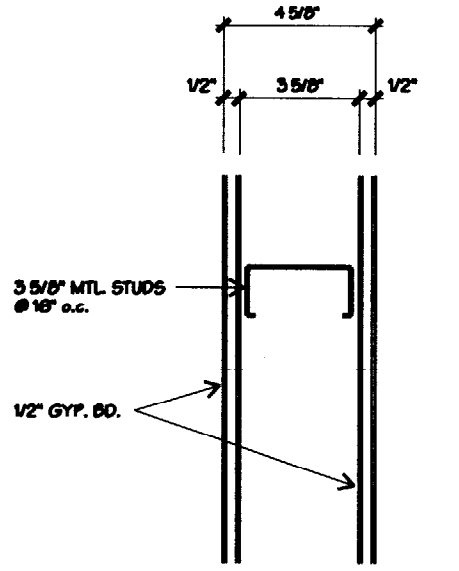
5 DETAIL BASE @ WAITING ROOM
A4.2 3" = 1' 0"



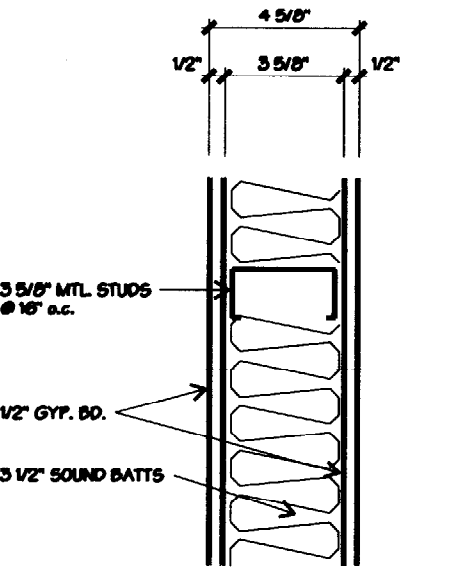
6 DETAIL BASE AND CHAIRRAIL @ OUTSIDE WALL
A4.2 3" = 1' 0"



3 INTERIOR @ 1 HOUR RATED



2 INTERIOR w/o INSUL.

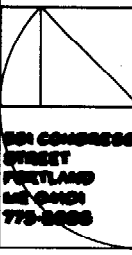


1 TYP. INTERIOR w/INSUL.



PORTLAND GASTROENTEROLOGY
COASTAL BANK HEADQUARTERS BUILDING
PORTLAND
CONGRESS ST.
MAINE

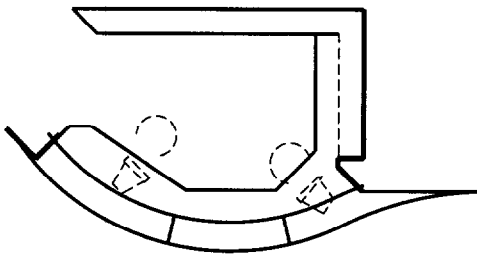
WHIPPLE CALLENDER ARCHITECTS



DATE 4 NOV. 2000
PROJECT NUMBER
SCALE AS NOTED
DRAWN FOR
CHECKED
REVISION

COURTESY
DETAILS AND WALL TYPES

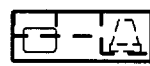
SHEET 1 of 10
A4.2



1 RECEPTION



3 JAN'S OFFICE



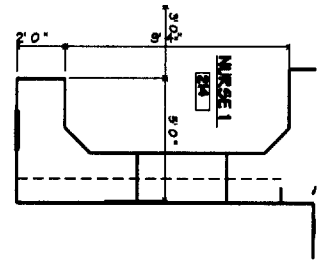
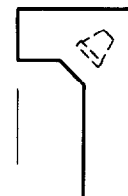
4 PROCEDURE
24' x 24' x 8' 6"



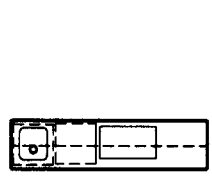
6 ADMIT 1 BUREAU



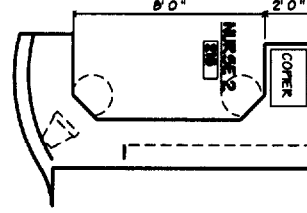
7 ADMIT 2 BUREAU



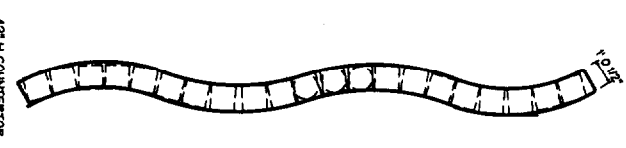
7 NURSE 1 BUREAU



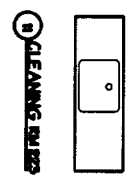
8 NURSE 2 BUREAU



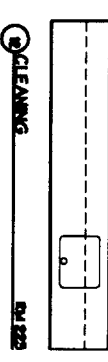
9 LOCKERS



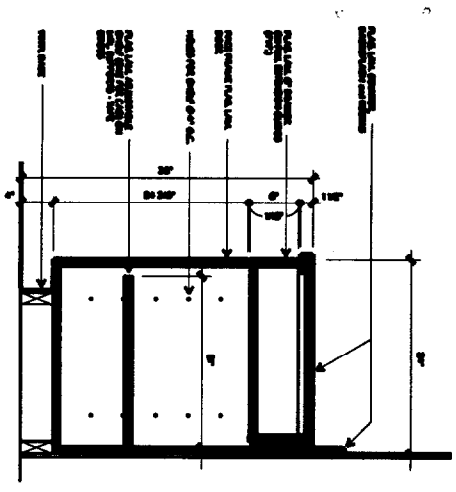
9 LOCKERS BUREAU
48" H. COUNTER TOP
28" H. LOCKERS
LOCKERS BELOW



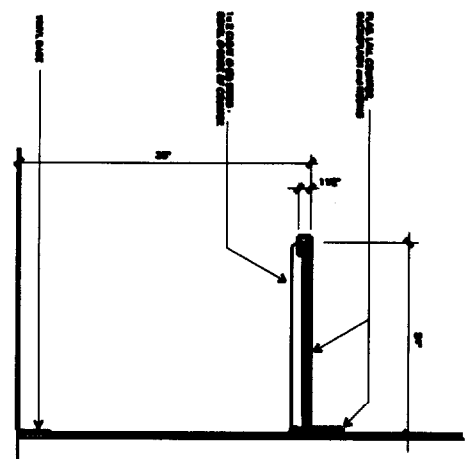
10 CLEANING BUREAU



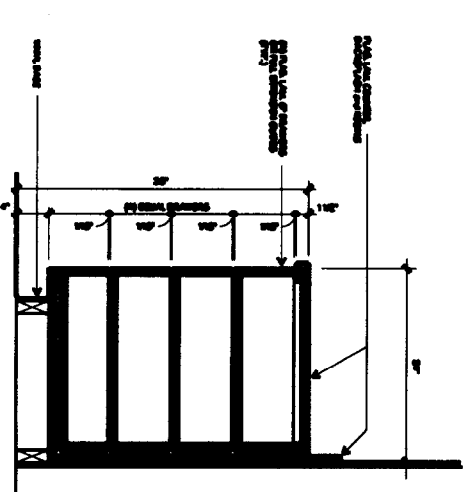
11 CLEANING BUREAU



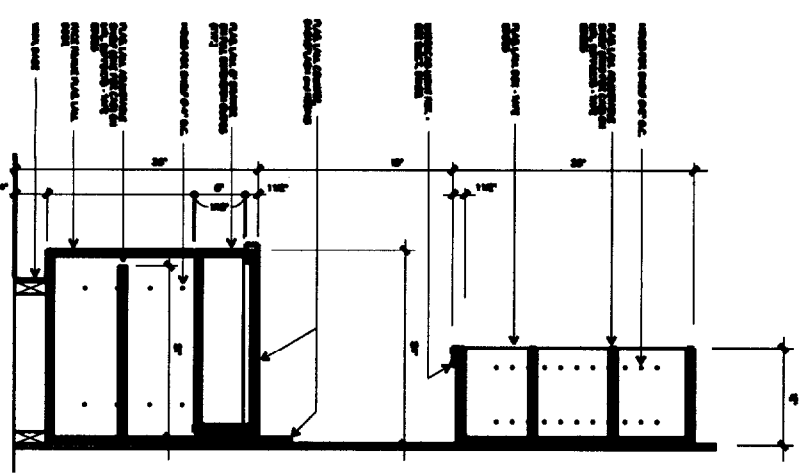
12 DETAIL @ TYPICAL BASE CABINET
1/8" = 1'-0"



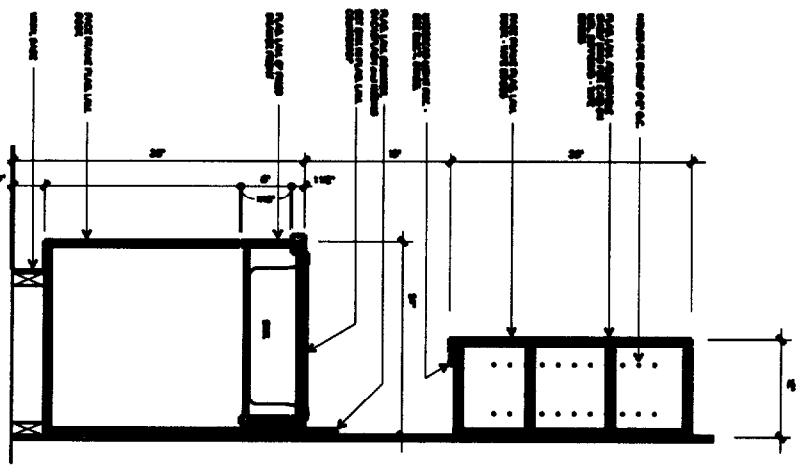
14 DETAIL @ COUNTER
1/8" = 1'-0"



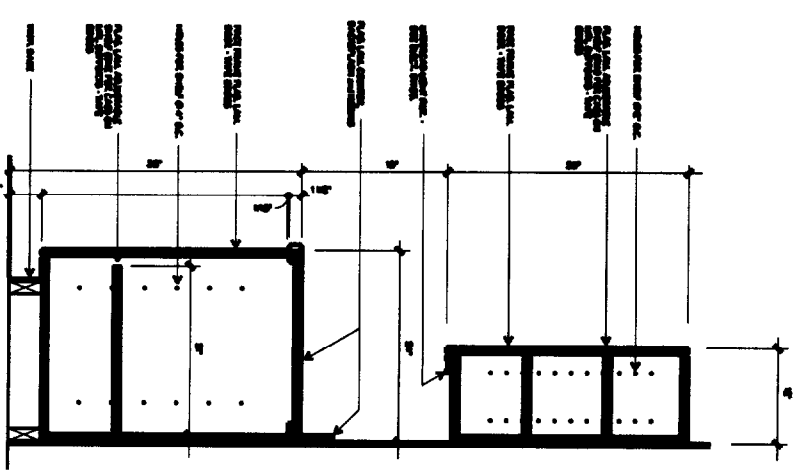
13 DETAIL @ TYP. DRAWER BASE CABINET
1/8" = 1'-0"



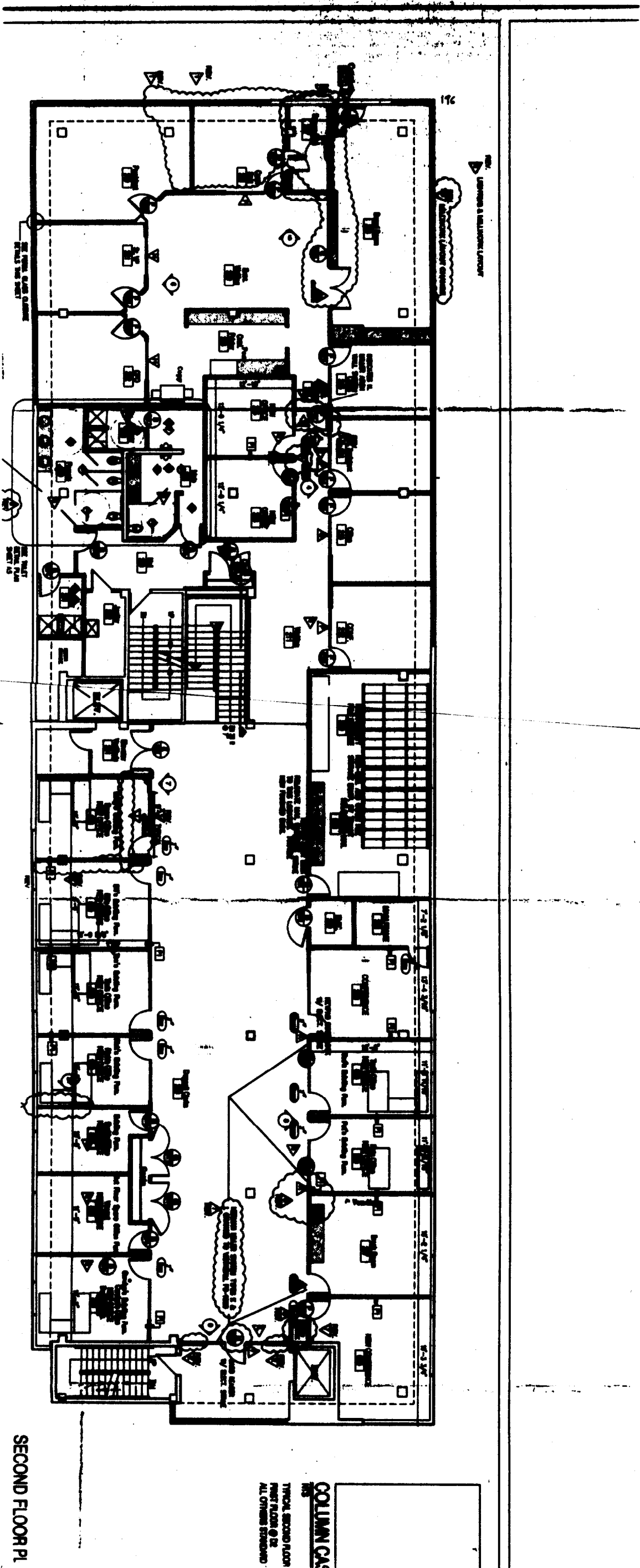
15 DETAIL @ 30" HIGH BASE CABINET
1/8" = 1'-0"



17 DETAIL @ SINK BASE CABINET
1/8" = 1'-0"



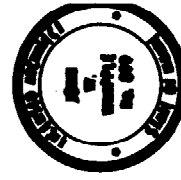
16 DETAIL @ CABINET
1/8" = 1'-0"



EXISTING
 TO BE RENOVATED
 FOR PORTLAND
 CASTERNTREASURY

SECOND FLOOR P1

COLLIANCA
 TYPICAL SECOND FLOOR
 FIRST FLOOR @ 12
 ALL OTHERS EXCLUDED



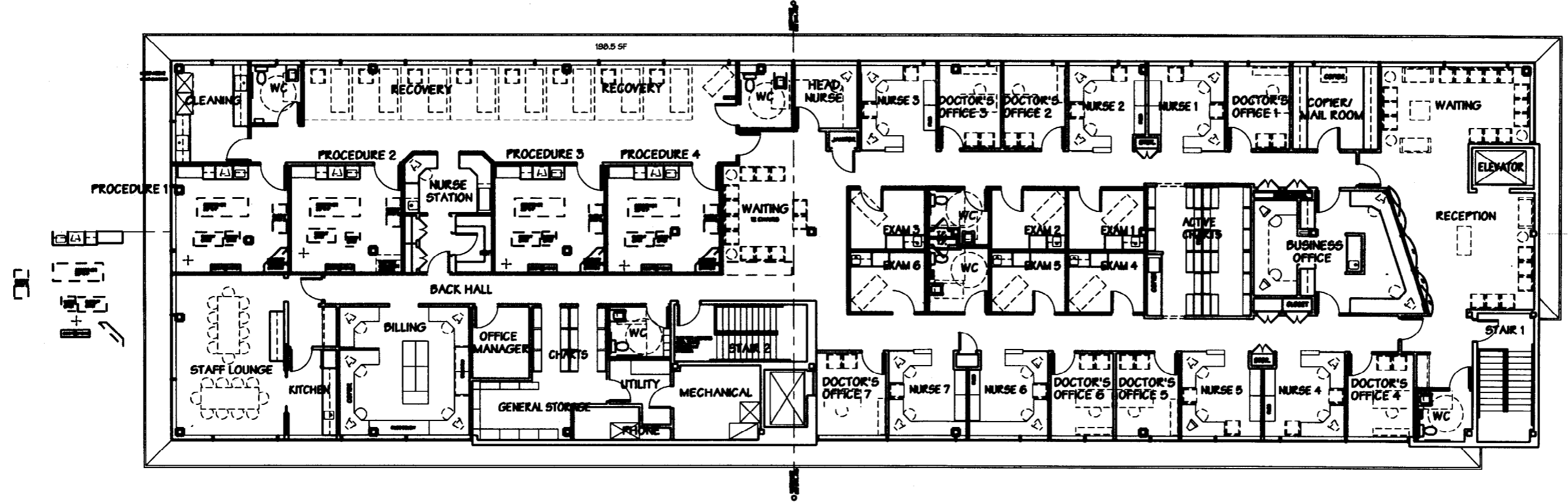
PORTLAND GASTROENTEROLOGY
 COASTAL BANK HEADQUARTERS BUILDING
 PORTLAND
 CONGRESS ST.
 MAINE

PORTLAND GASTROENTEROLOGY

TENANT FIT-UP DRAWINGS FOR COASTAL BANK HEADQUARTERS, CONGRESS STREET, PORTLAND, MAINE

- AL1 KEY PLAN
- AL2 SECOND FLOOR PLAN NORTH
- AL3 SECOND FLOOR PLAN NORTH
- AL4 WAITING & RECEPTION INT. ELEVS.
- AL5 BUSINESS OFFICE, CLOSET, COPIER/MAIL Rm. INT. ELEVS.
- AL6 DRUG CLOSET, TOILET Rm.s, ACTIVE CHARTS, EXAM Rm.s 4, 5, 6, KITCHEN INT. ELEVS.
- AL7 PROCEDURE Rm. 1, STAFF LOUNGE, CENTRIFUGE INT. ELEVS.
- AL8 RECOVERY NURSE'S STATION, RECOVERY ROOM INT. ELEVS.
- AL9 CLEANING ROOM, TOILET Rm.s 2, 3, 4, EXAM Rm.s 1, 2, 3 INT. ELEVS.
- AL10 PROCEDURE WAITING ROOM, PROCEDURE Rm.s 2, 3, 4 INT. ELEVS.
- AL11 DOOR AND HARDWARE SCHEDULES AND DETAILS
- AL12 WALL TYPES
- AL13 CABINET DETAILS

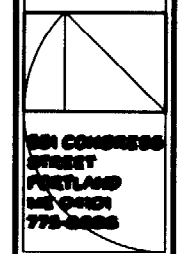
190.5 SF



1 NORTH PLAN
 3/1/00

2 SOUTH PLAN
 3/1/00

**WHIPPLE
 CALLENDER
 ARCHITECTS**



101 CONGRESS STREET
 PORTLAND
 ME 04101
 775-8888

DATE 21 APR 2000

PROJECT NUMBER

SCALE VP - 1/4"

DRAWN

CHECKED

REVISION

CONGRESS
 THIRD
 FLOOR
 PLAN

SHEET OF

AL.1