

1 First Floor Plan  
SCALE: 1/8" = 1'-0"

2 Second Floor Plan  
SCALE: 1/8" = 1'-0"

**DOOR SCHEDULE**

DOOR NO.	LOCATION	TO	FROM	DOOR SIZE	DOOR	FINISH	DETAILS	REMARKS
101	Stair B	Waiting	3'-0" x 7'-0" x 3 3/4"	A	MS	MS	B	
201	Tenant B	Waiting	3'-0" x 7'-0" x 3 3/4"	A	MS	MS	B	
202	Stair B	Waiting	3'-0" x 7'-0" x 3 3/4"	A	MS	MS	B	
203	Stair B	Waiting	3'-0" x 7'-0" x 3 3/4"	A	MS	MS	B	
204	Stair B	Waiting	3'-0" x 7'-0" x 3 3/4"	A	MS	MS	B	
205	Stair B	Waiting	3'-0" x 7'-0" x 3 3/4"	A	MS	MS	B	
206	Stair B	Waiting	3'-0" x 7'-0" x 3 3/4"	A	MS	MS	B	
207	Stair B	Waiting	3'-0" x 7'-0" x 3 3/4"	A	MS	MS	B	
208	Computer Storage	3'-0" x 7'-0" x 3 3/4"	A	MS	MS	B	5	

Construction Permit Set

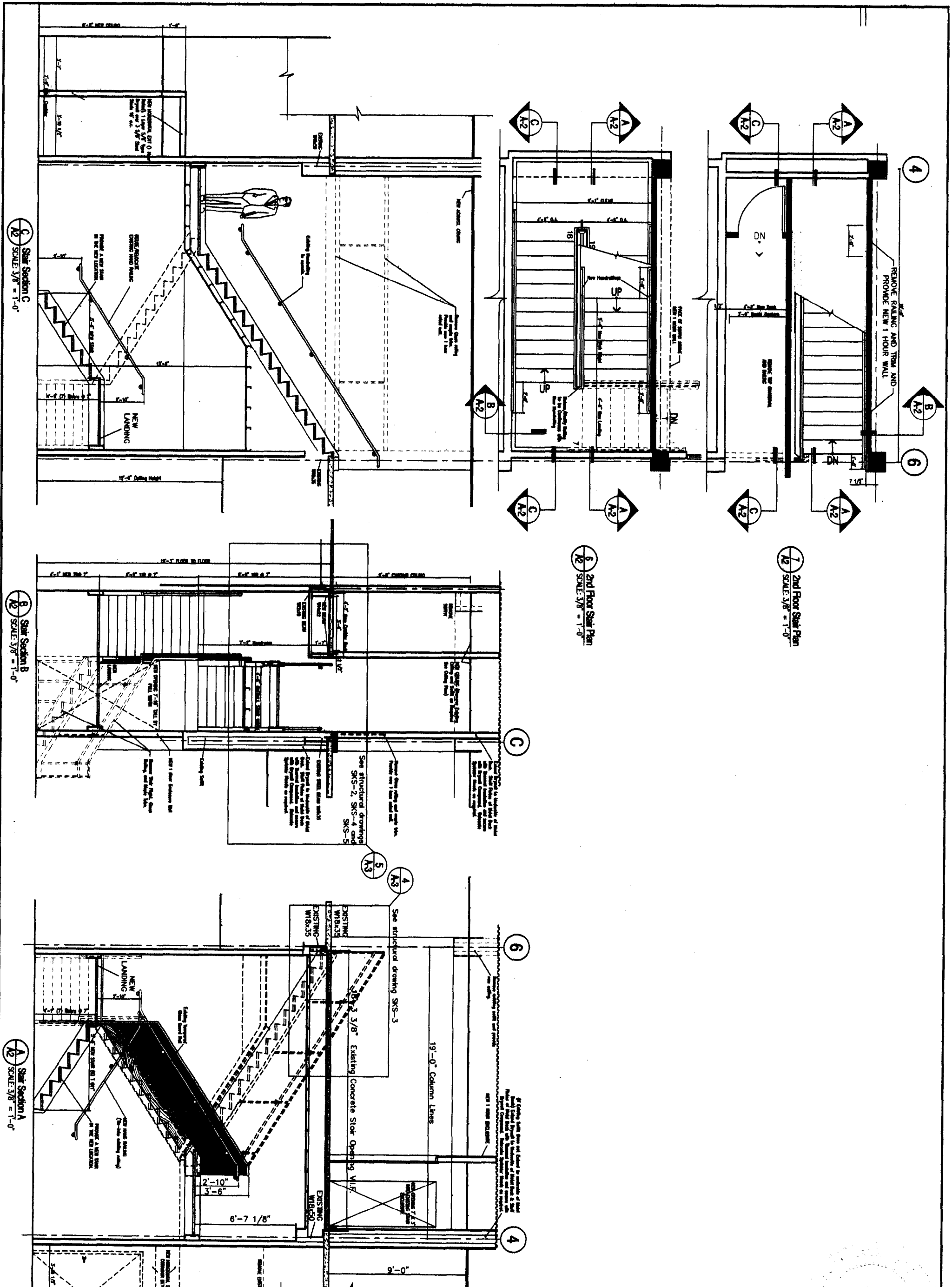
NORWAY SAVINGS BANK - Sub-Lease  
1200 Congress St. Portland, ME  
First and Second Floor Plans  
Door Schedule

revision #/ date	Revision Reason
date 01/06/04	drawn by: 1/8" = 1'-0"

**TLA THERIAULT/LANDMANN ASSOCIATES**  
Tel: (207) 842-8860  
Fax: (207) 842-8871  
118 Congress St. Portland, ME 04101 1 (800) 282-2259

CL: de Blackwell  
*Anne Blackwell*  
ARC1834

**A1**  
sheet number  
issued:  
project no. 0332



**A2**  
sheet number  
issued:  
project no. 0332

Construction Permit Set

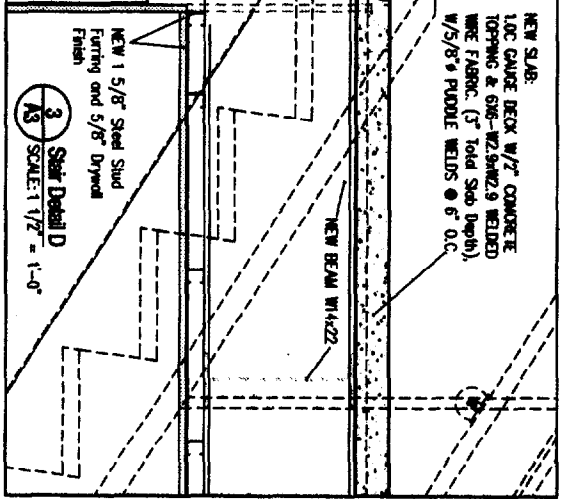
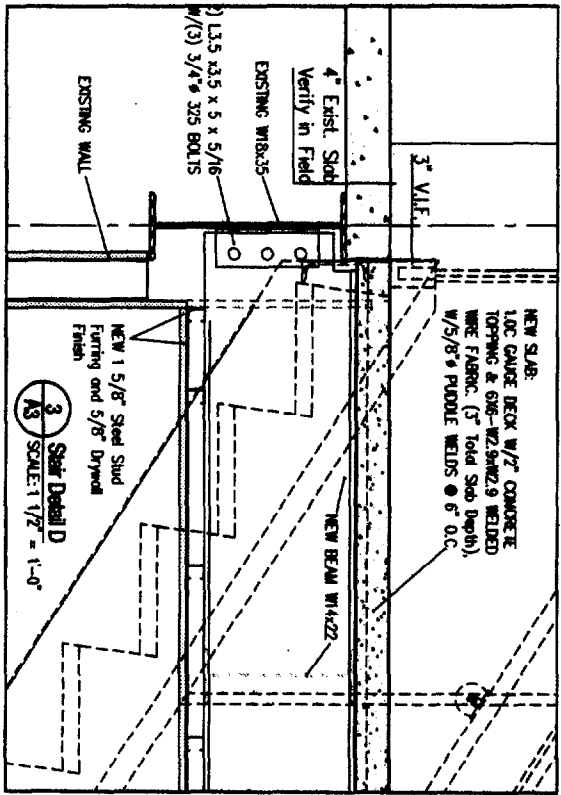
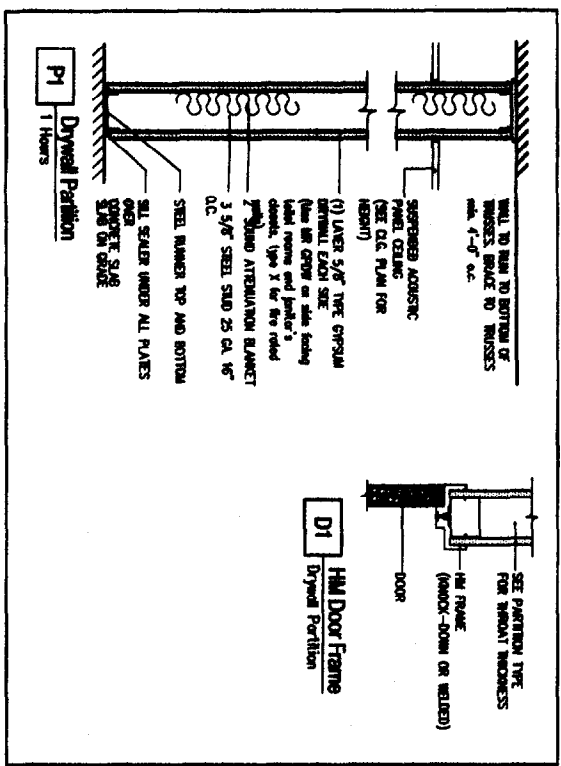
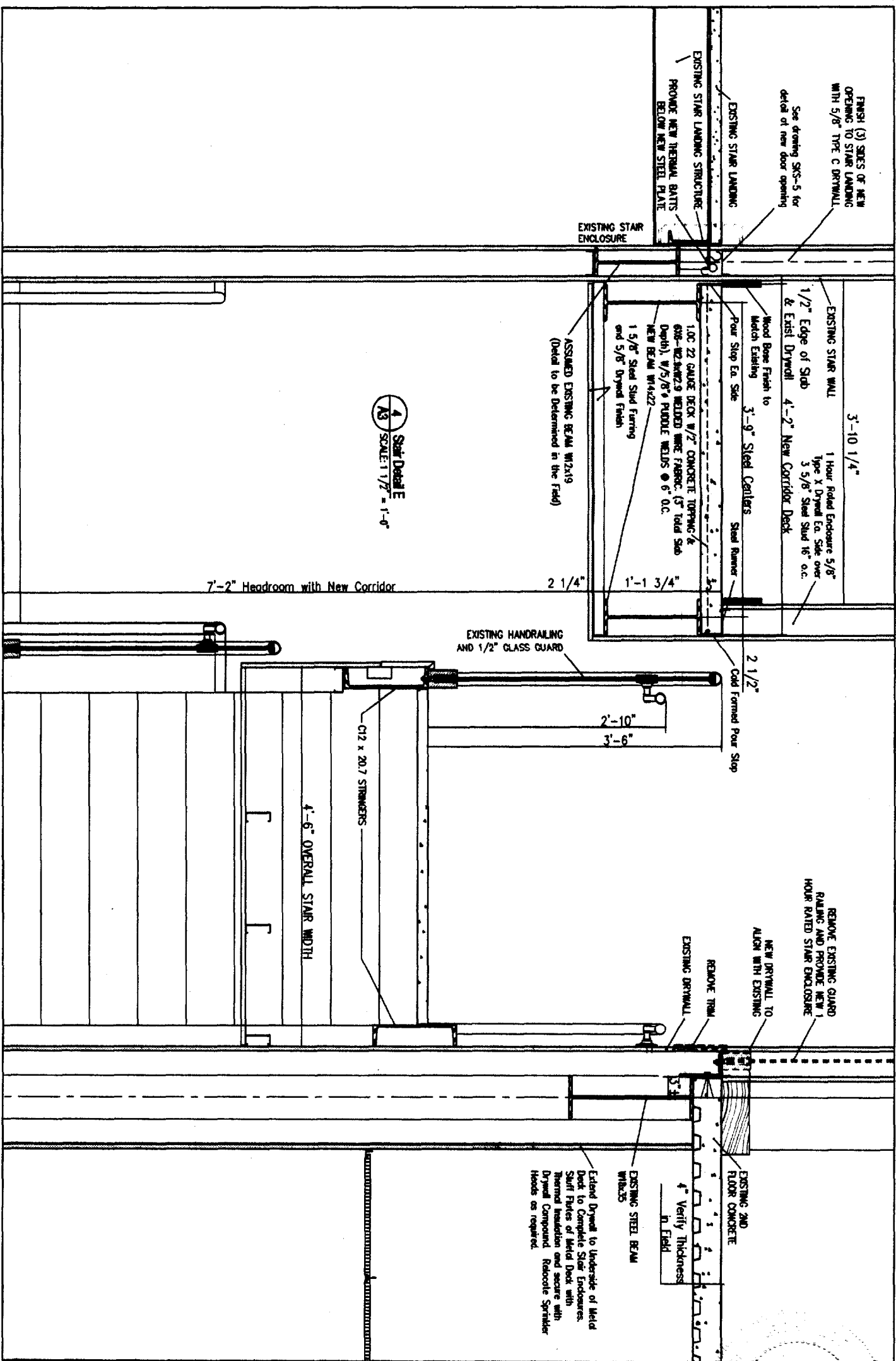
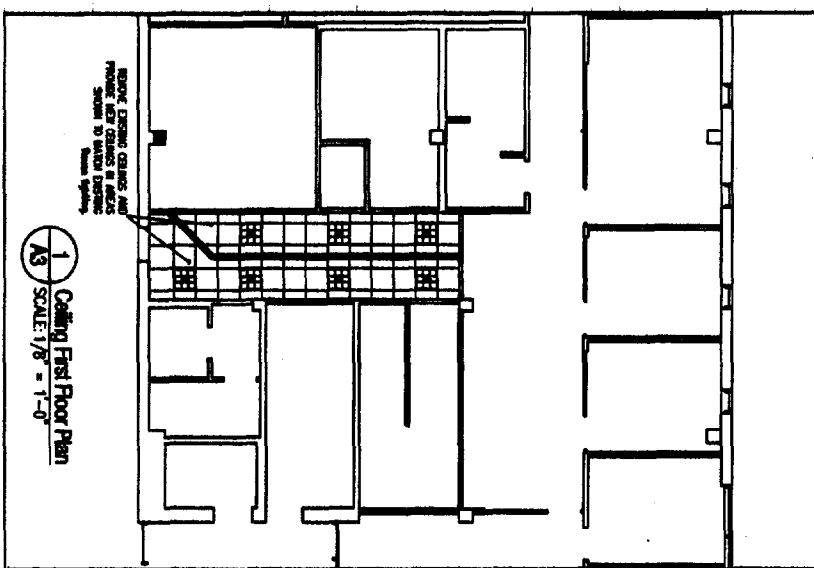
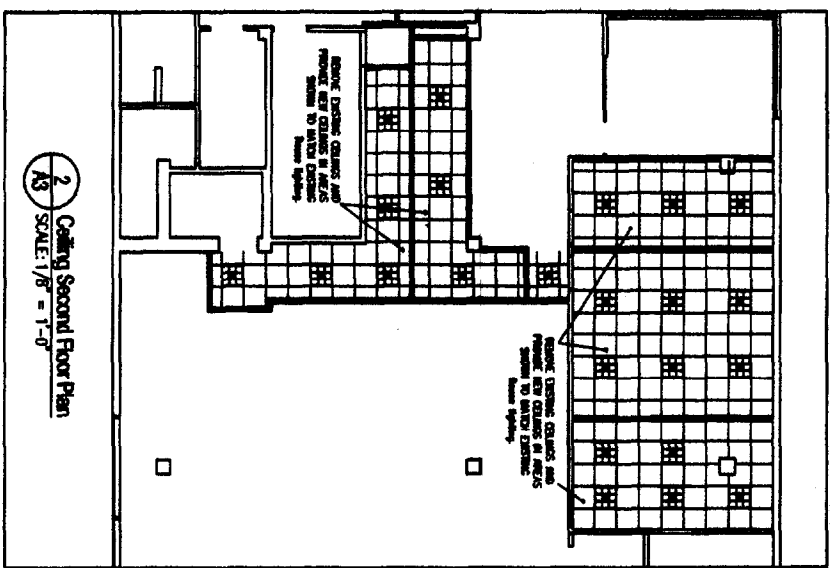
NORWAY SAVINGS BANK - Sub Lease  
1200 Congress St. Portland, me  
Stair Sections and Plans

revision #/ date	Revision Reason

date 01/06/04 drawn by: 3/8" = 1'-0"

**TLA** THERIAULT/LANDMANN ASSOCIATES  
Tel: (807) 848-8860  
Fax: (807) 848-8871  
118 Congress St. Portland, ME 04101 1 (800) 888-8868

Clyde Blackwell  
*Clyde Blackwell*  
ARC 1834



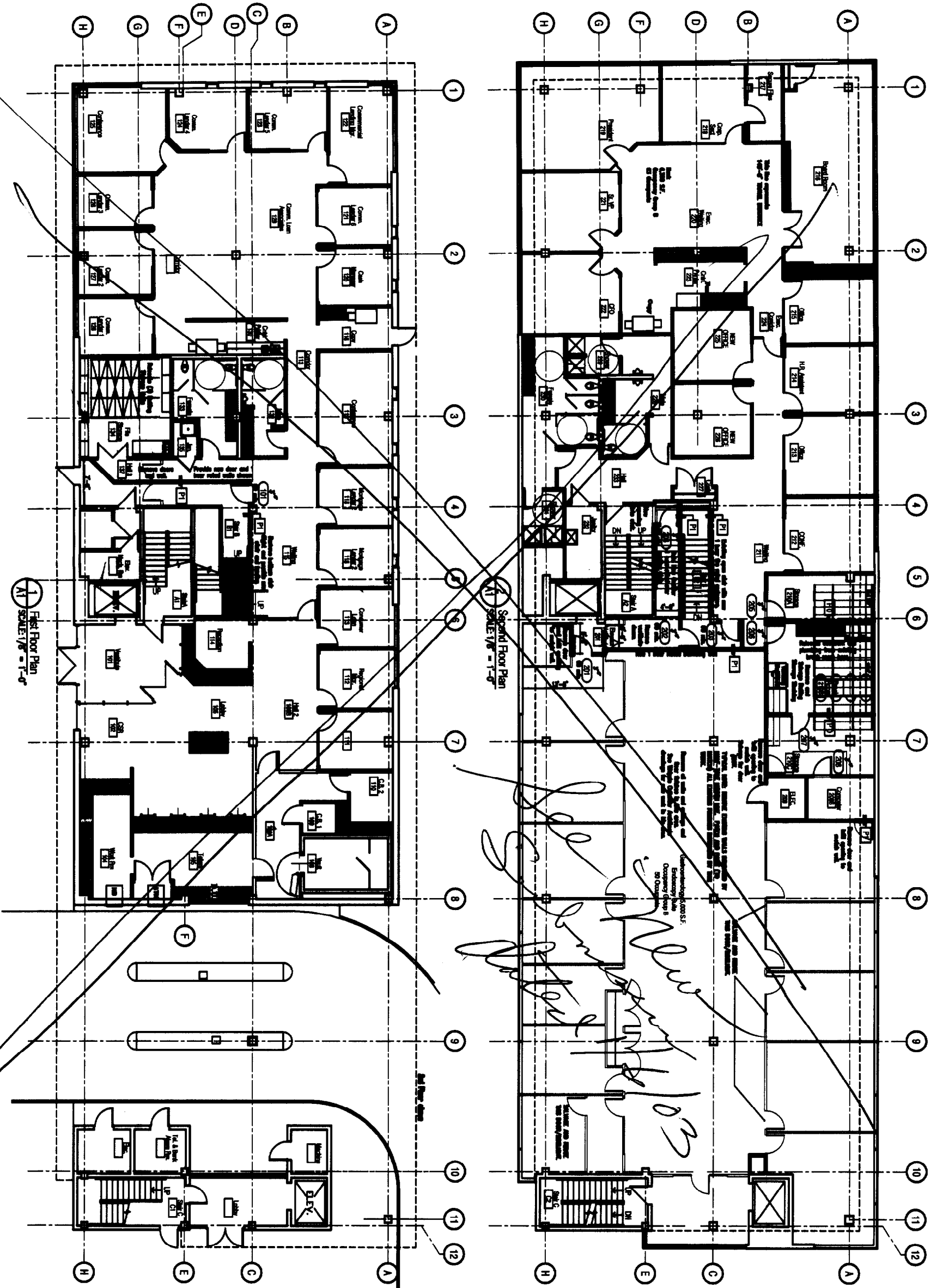
**A3**  
sheet number  
issued:  
project no. 0332

Construction Permit Set  
**NORWAY SAVINGS BANK - Sub- Lease**  
1200 Congress St. Portland, ME  
Details  
Norway Bank Space

revision #/ date	Revision Reason
date 01/06/04	drawn by: As Noted

**TLA THERIAULT/LANDMANN ASSOCIATES**  
Tel: (807) 848-8890  
Fax: (807) 848-8871  
118 Congress St. Portland, ME 04101 1 (800) 858-8893

Clyde Blackwell  
*Clyde Blackwell*  
ARC 1634



**DOOR SCHEDULE**

DOOR NO.	TO	LOCATION	SIZE	TYPE	FINISH	GLASS	REMARKS
101	TO	LOBBY	3'-0" x 7'-0"	A	00	0	
102	TO	LOBBY	3'-0" x 7'-0"	A	00	0	
103	TO	LOBBY	3'-0" x 7'-0"	A	00	0	
104	TO	LOBBY	3'-0" x 7'-0"	A	00	0	
105	TO	LOBBY	3'-0" x 7'-0"	A	00	0	
106	TO	LOBBY	3'-0" x 7'-0"	A	00	0	
107	TO	LOBBY	3'-0" x 7'-0"	A	00	0	
108	TO	LOBBY	3'-0" x 7'-0"	A	00	0	
109	TO	LOBBY	3'-0" x 7'-0"	A	00	0	
110	TO	LOBBY	3'-0" x 7'-0"	A	00	0	
111	TO	LOBBY	3'-0" x 7'-0"	A	00	0	
112	TO	LOBBY	3'-0" x 7'-0"	A	00	0	
113	TO	LOBBY	3'-0" x 7'-0"	A	00	0	
114	TO	LOBBY	3'-0" x 7'-0"	A	00	0	
115	TO	LOBBY	3'-0" x 7'-0"	A	00	0	
116	TO	LOBBY	3'-0" x 7'-0"	A	00	0	
117	TO	LOBBY	3'-0" x 7'-0"	A	00	0	
118	TO	LOBBY	3'-0" x 7'-0"	A	00	0	
119	TO	LOBBY	3'-0" x 7'-0"	A	00	0	
120	TO	LOBBY	3'-0" x 7'-0"	A	00	0	

Construction Permit Set

revision #/ date Revision Reason

project NORWAY SAVINGS BANK - Sub-Lease  
1200 Congress St. Portland, ME

date 12/08/08 drawn by 1/8" = 1'-0"

**TLA THERIAULT/LANDMANN ASSOCIATES**  
118 Congress St. Portland, ME 04101  
Tel: (207) 848-8800 Fax: (207) 848-8871  
1 (800) 258-8888

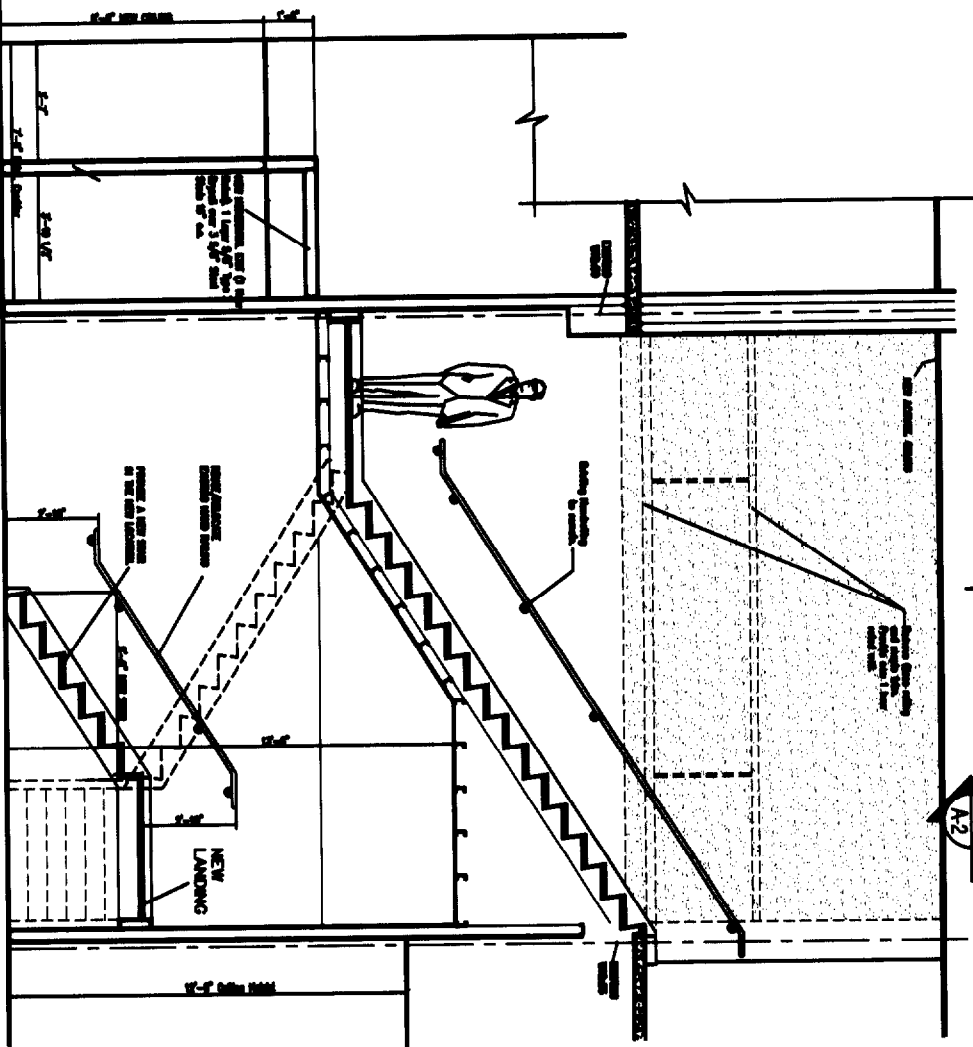
Clyde Blackwell

**A1** sheet number  
project no. 0822

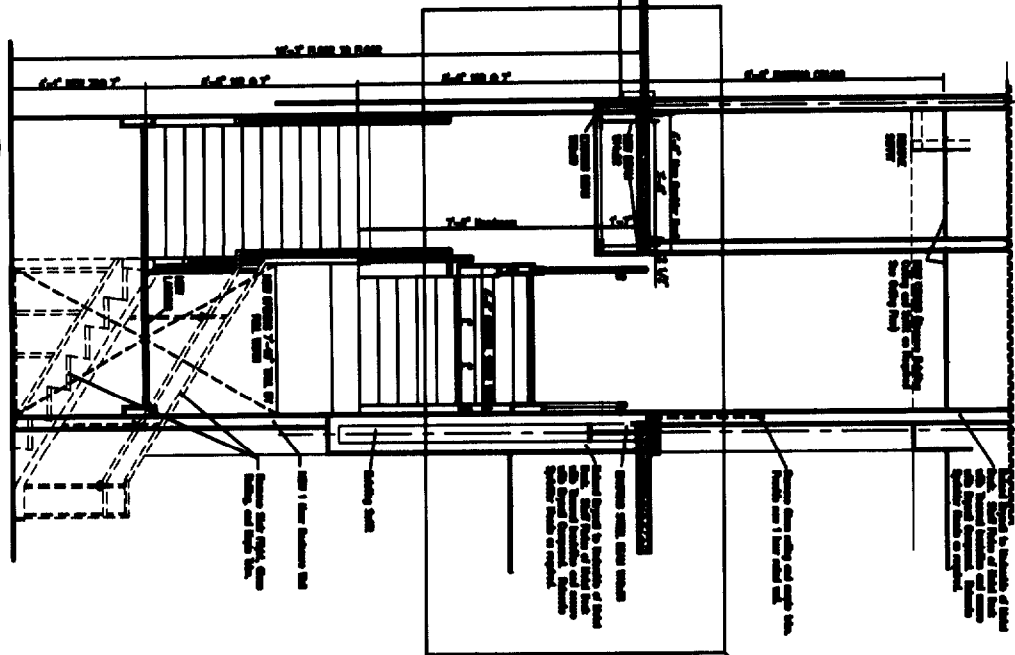
drawing title  
**First and Second Floor Plans  
Door Schedule**

ARC1894

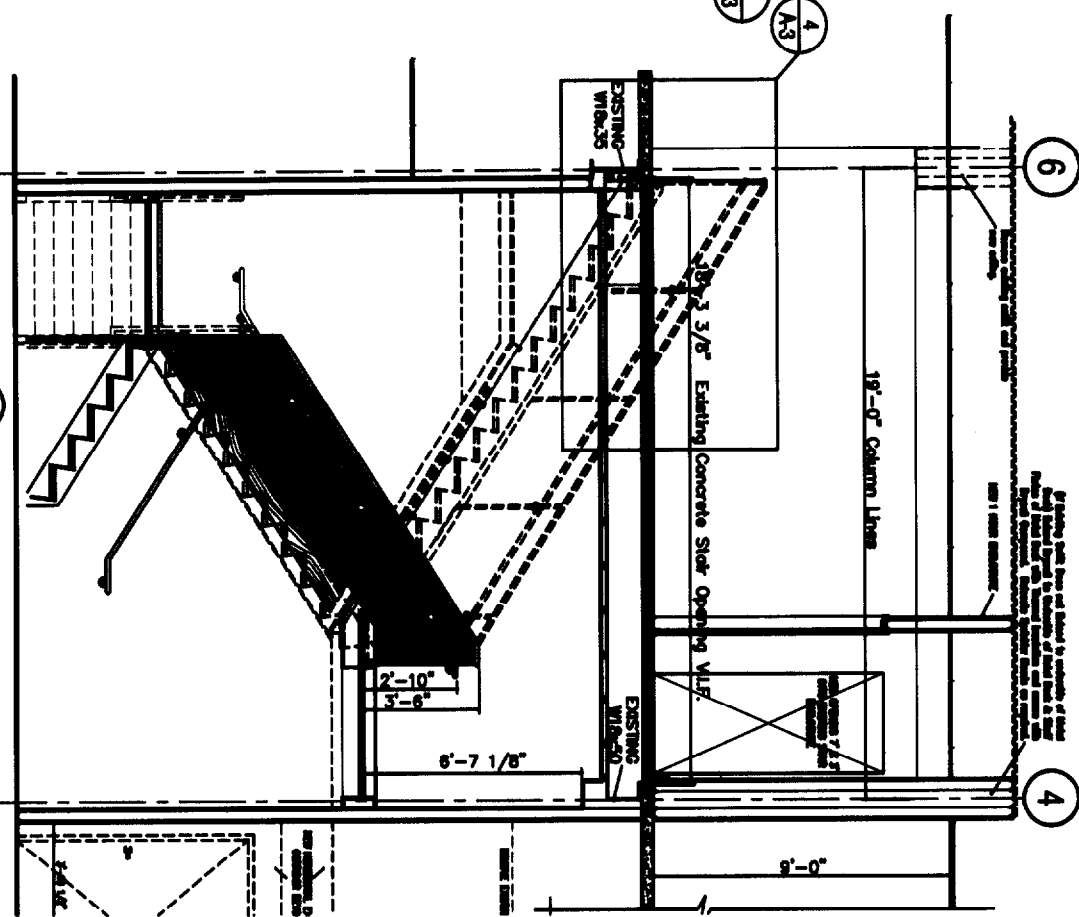
3 Stair Section C  
SCALE: 3/8" = 1'-0"



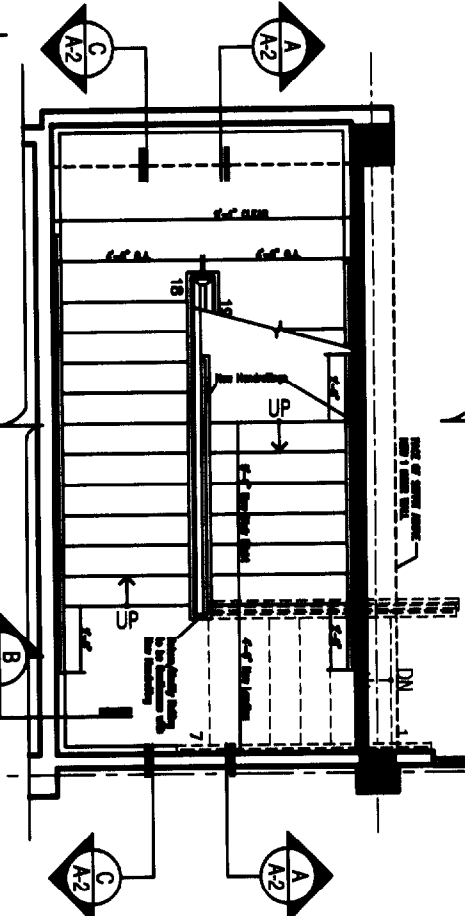
2 Stair Section B  
SCALE: 3/8" = 1'-0"



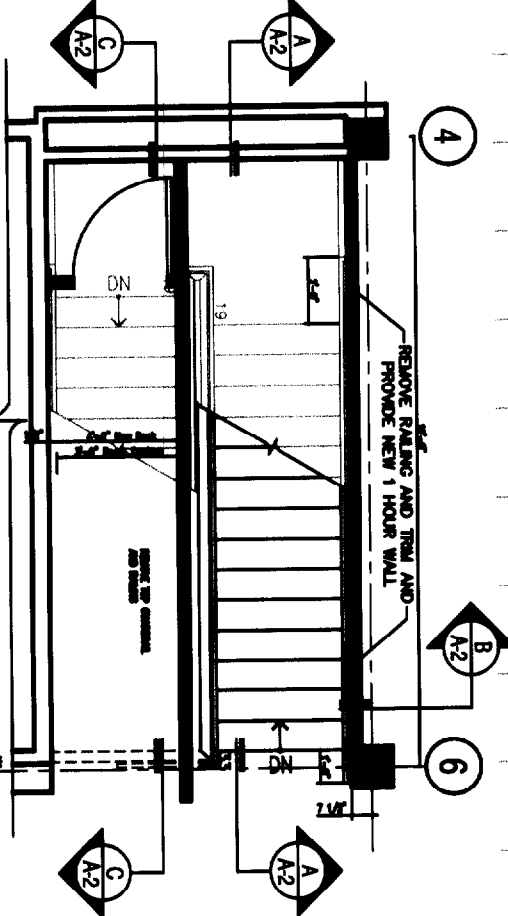
1 Stair Section A  
SCALE: 3/8" = 1'-0"



6 2nd Floor Stair Plan  
SCALE: 3/8" = 1'-0"



7 2nd Floor Stair Plan  
SCALE: 3/8" = 1'-0"



Construction Permit Set

revision #/ date Revision Reason

NORWAY SAVINGS BANK - Sub Lease  
1200 Congress St. Portland, me

Stair Sections and Plans

date 12/08/08 drawn by: 3/8" = 1'-0"

**TLA** THERIAULT/LANDMANN ASSOCIATES

118 Congress St. Portland, ME 04101  
Tel: (207) 648-8888 Fax: (207) 648-8871  
1 (800) 288-8888

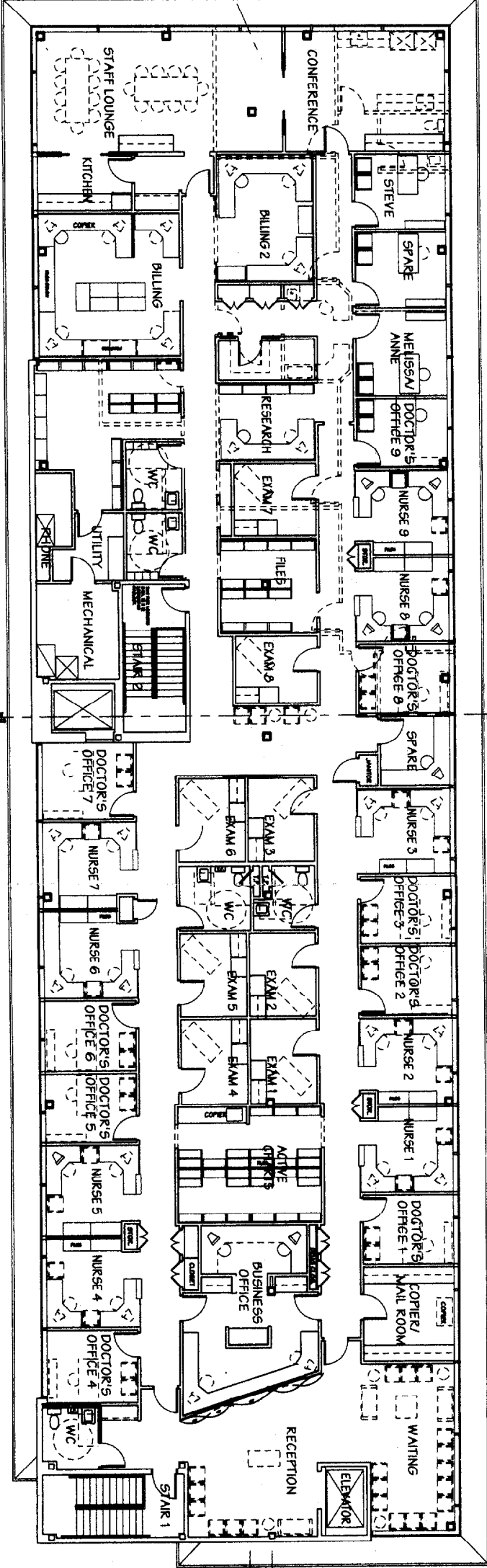
Clyde Blackwell

ARC 1884

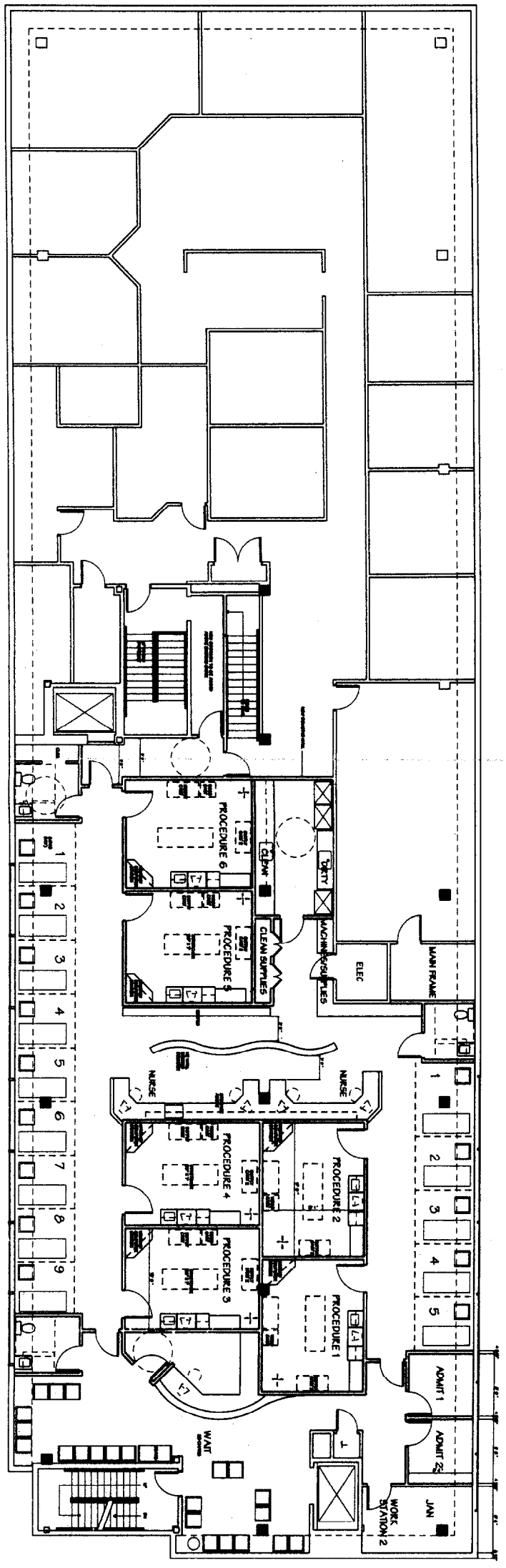
**A2**  
sheet number

project no. 0838

drawing title



**3RD FLOOR OFFICES**  
 SCALE 1/8" = 1'



**ENDOSCOPY SUITE**  
 SCALE 1/8" = 1'

