

Prepared For:
Dr. Michael Bedecs

Consultant:

Architect:
ARCHETYPE architects
48 Union Wharf Portland, Maine 04101
(207) 772-0022 ARCHETYPE@ARCHETYPEPA.COM

Project:
Renovations to AGE MANAGEMENT CENTER
1375 Congress Street
Portland, Maine 04102

Revisions:

Date: 14 FEB 2018
Scale: As indicated

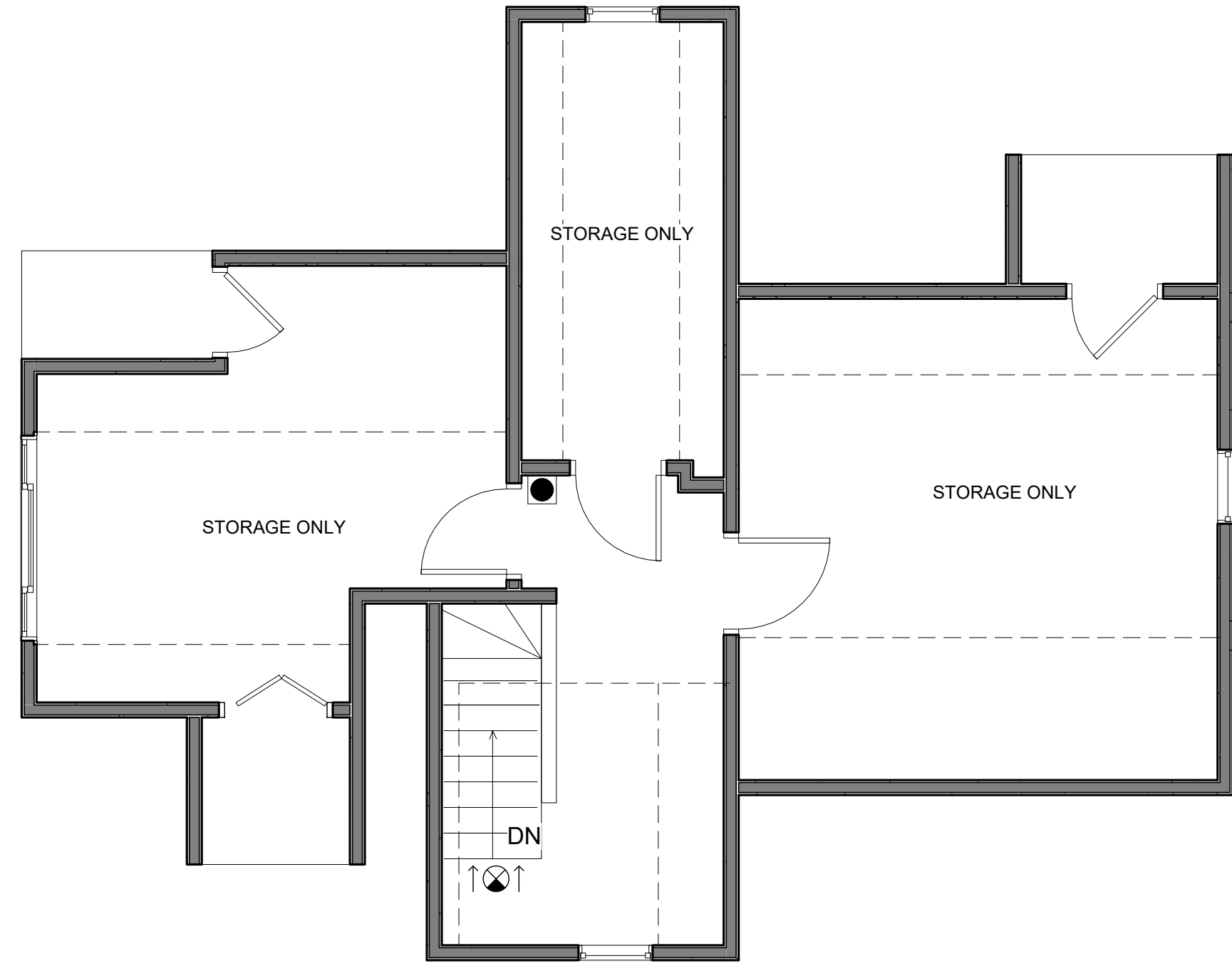
LIFE SAFETY

LS1.1

EMERGENCY LIGHTNING	
MAXIMUM TRAVEL DISTANCE	
COMMON PATH OF TRAVEL LENGTH	
EXIT ENTRANCE	
EXIT ENTRANCE	
FIRE EXTINGUISHER	

OCCUPANT LOAD CALCULATION:
OL = AREA/OCCUPANT LOAD FACTOR
1ST FLOOR OL = 1,590 SF/100 = 15.9 = 16 PEOPLE
2ND FLOOR OL = 980 SF/100 = 9.8 = 10 PEOPLE
3RF FLOOR OL = 570 SF/300 = 1.9 = 2 PEOPLE

SINGLE MEANS OF EGRESS ON 2ND FLOOR PERMITTED
SECTION 805.3.1.1, PARAGRAPH 1, IBC 2015

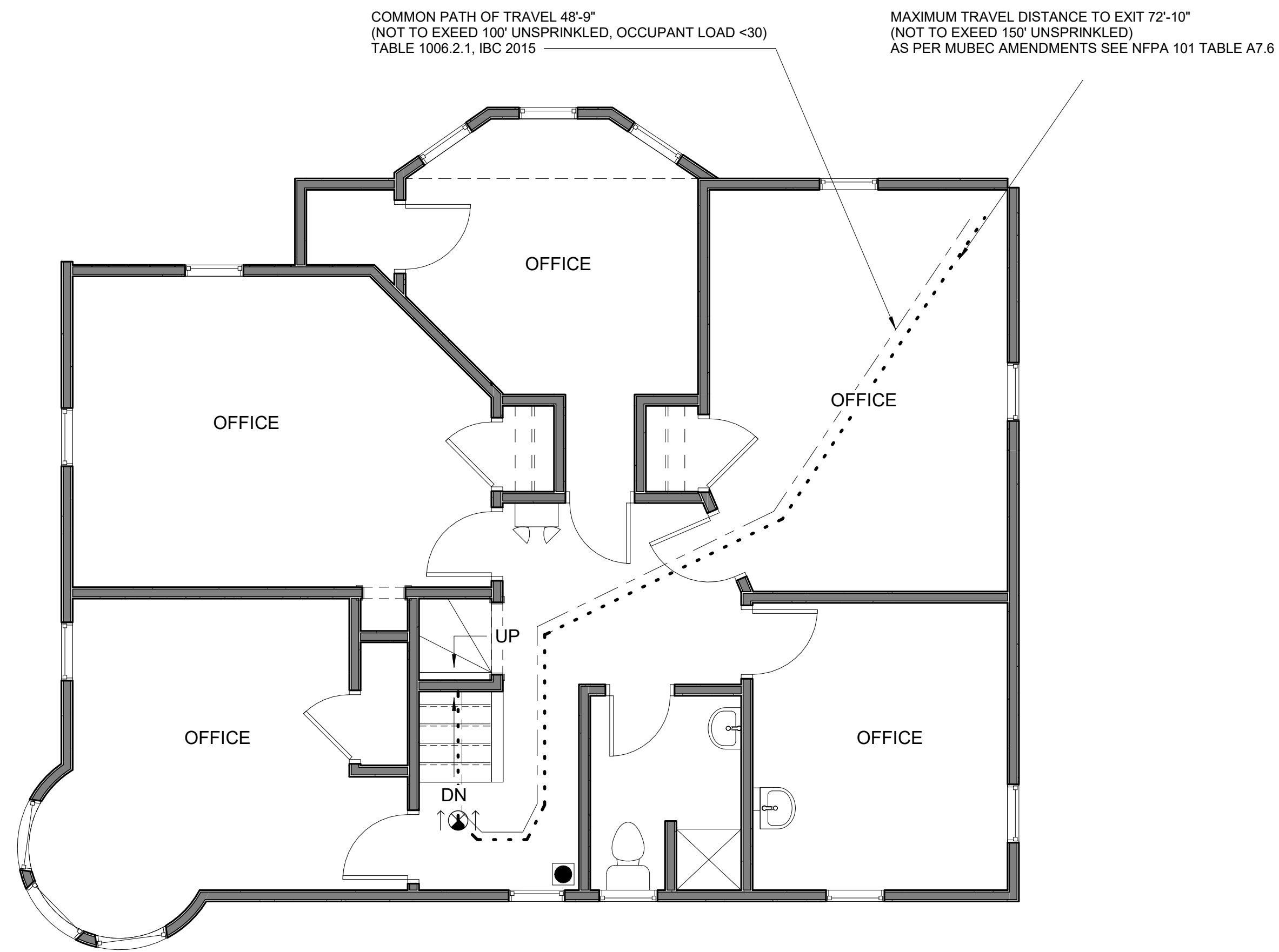


4 | THIRD FLOOR PLAN - LIFE SAFETY

1/4" = 1'-0" 0 1'-0" 2'-0" 4'-0" 8'-0"

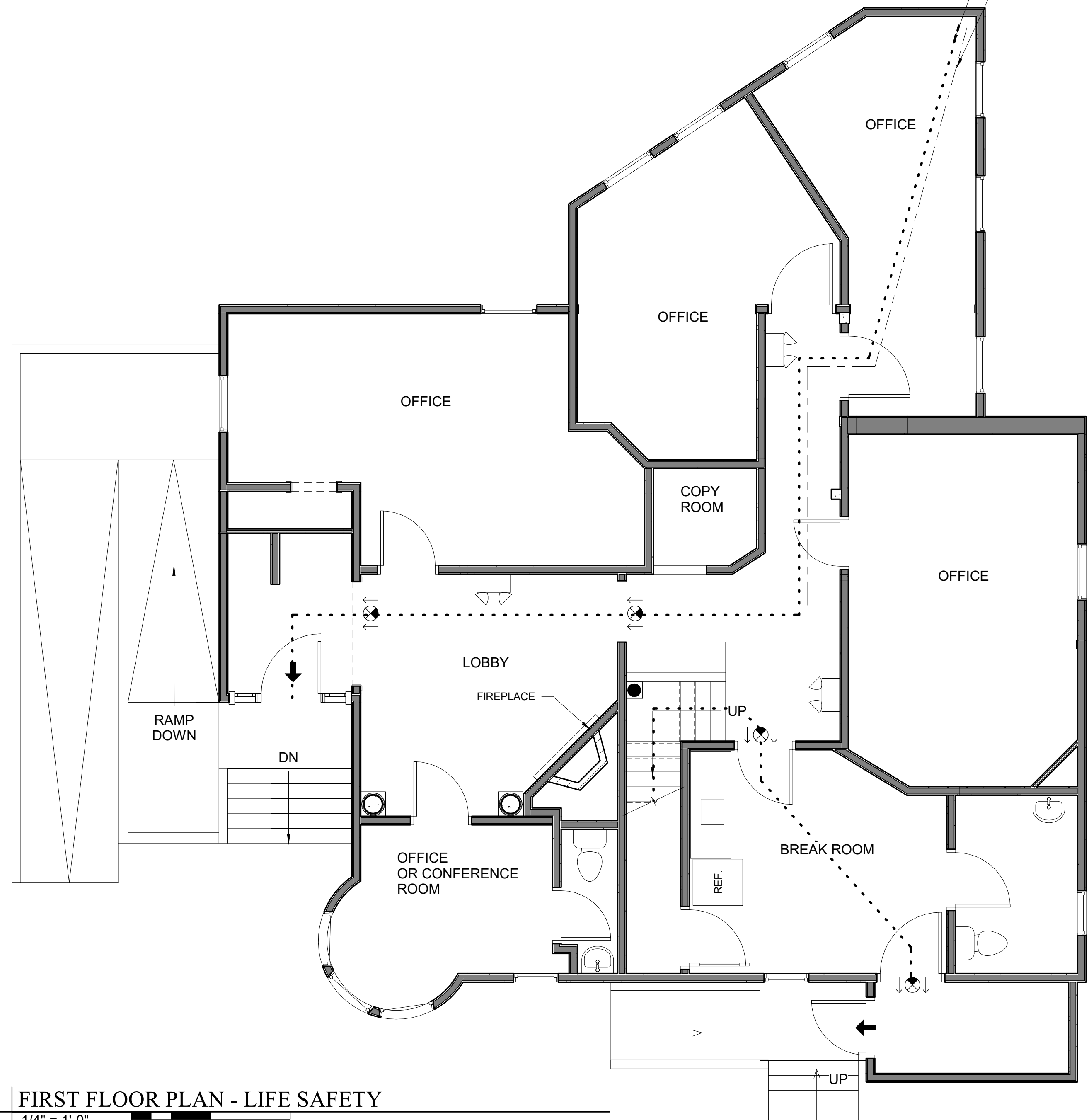
MAXIMUM TRAVEL DISTANCE TO EXIT 63'-5"
(NOT TO EXCEED 150' UNSPRINKLED)
AS PER MUBEC AMENDMENTS SEE NFPA 101 TABLE A7.6

COMMON PATH OF TRAVEL - 33'-1"
(NOT TO EXCEED 100' UNSPRINKLED, OCCUPANT LOAD <30)
TABLE 1006.2.1, IBC 2015



2 | SECOND FLOOR PLAN - LIFE SAFETY

1/4" = 1'-0" 0 1'-0" 2'-0" 4'-0" 8'-0"



1 | FIRST FLOOR PLAN - LIFE SAFETY

1/4" = 1'-0" 0 1'-0" 2'-0" 4'-0" 8'-0"