

Prepared For:
Dr. Michael Bedecs
 Address
 City, State

Consultant:

Architect:
ARCHETYPE
 architects
 48 Union Wharf Portland, Maine 04101
 (207) 772-6022 ARCHETYPE@ARCHETYPEPA.COM

Project:
Renovations to AGE
MANAGEMENT
CENTER
 1375 Congress Street
 Portland, Maine 04102

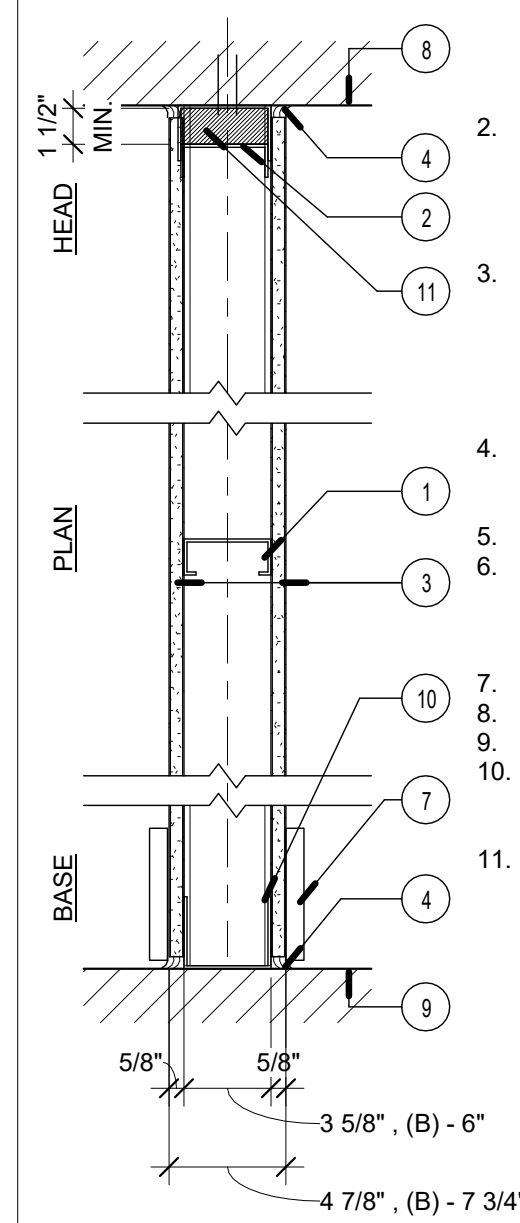
Revisions:

Date: 14 FEB 2018
 Scale: 1 1/2" = 1'-0"

WALL TYPES

A4.00

LABEL	W1A	W1B	1 HR NON-BEARING PARTITION DESIGN NUMBER - U419 SOUND - N/A
1	3 5/8"	6"	



1. **STUDS** - CHANNEL-SHAPED, MIN 3-5/8" WIDE BY 1-1/4" DEEP WITH 5/16" FOLDED BACK RETURN FLANGE LEGS. FABRICATED FROM NO. 25 MSG GALV STEEL. MAX STUD SPACING 24" O.C. STUDS TO BE CUT 1" LESS THAN ASSEMBLY HEIGHT. **NOTE: WALL TYPE 'B' USES 6" STUDS IN PLACE OF 3-5/8" STUDS.**
2. **CEILING RUNNER** - CHANNEL-SHAPED TOP TRACK, MIN. 3 5/8" WIDE BY 1 1/4" DEEP, FABRICATED FROM NO. 20 MSG GALV STEEL. TOP TRACK SITS INSIDE VERTICALLY SLOTTED HEAD TRACK. ATTACHED TO CEILING WITH FASTENERS, 24" O.C. MAX. GYPSUM AND VERTICAL STUDS FASTENED TO TOP TRACK ONLY.
3. **TYPE X GYP BOARD** - 5/8 IN. THICK, 4 FT WIDE. GYPSUM BOARD SECURED TO STUDS WITH 1" LONG TYPE S-12 STEEL SCREWS SPACED 12" O.C. GYPSUM BOARD JOINTS ORIENTED VERTICALLY, LOCATED OVER STUDS AND OFFSET BETWEEN LAYERS. GYP HELD UP FROM FLOOR MIN 1/4" TO 3/8" FOR INSTALLATION OF ACOUSTIC SEALANT - TYPICAL.
4. **CAULKING AND SEALANTS** - A BEAD OF ACOUSTICAL SEALANT APPLIED AROUND THE PARTITION PERIMETER FOR SOUND CONTROL, BOTH SIDES OF WALL.
5. **BLOCKING** - (NOT SHOWN) WOOD BLOCKING AS NEEDED
6. **TAPE AND COMPOUND** - (NOT SHOWN) VINYL DRY OR PREMIXED JOINT COMPOUND, APPLIED IN TWO COATS TO JOINTS AND SCREW HEADS, PAPER TAPE, 2 IN. WIDE, EMBEDDED IN FIRST LAYER OF COMPOUND OVER ALL JOINTS.
7. **BASE** - SEE FINISH SCHEDULE
8. **UNDERSIDE OF STRUCTURE**
9. **TOP OF STRUCTURE**
10. **FLOOR RUNNER** - CHANNEL-SHAPED RUNNERS, MIN. 3 5/8" WIDE W/ DEEP LEGS, FABRICATED FROM NO. 20 MSG GALV STEEL. ATTACHED TO FLOOR WITH FASTENERS, 24" O.C. MAX.
11. **MINERAL WOOL**

1 | WALL 1A&B - NON RATED PARTITION
 1 1/2" = 1'-0"