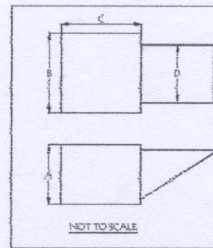


| FAN MODEL | A | B | C | D | E | WT. LBS. |
|-----------|-----|---------|---------|----|---------|----------|
| AHXC8-8 | 38" | 22 3/4" | 25 3/4" | 2" | 28" SQ. | 65 LBS. |



| FAN MODEL | A | B | C | D | Ø | WT. LBS. |
|-----------|-----|-----|-----|---------|---------|----------|
| AH67 | 32" | 32" | 32" | 24 1/2" | 24 1/2" | 131 LBS. |

NOTE: IT IS THE RESPONSIBILITY OF THE ARCHITECT/OWNER TO ENSURE THAT THE HOOD CLEARANCE FROM LIMITED-COMBUSTIBLE AND COMBUSTIBLE MATERIALS IS IN COMPLIANCE WITH LOCAL CODE REQUIREMENTS.

ALL EQUIPMENT IS UL LISTED COMPONENTS
 AMERICAN HOOD SYSTEMS ARE BUILT IN COMPLIANCE WITH NFPA #36 & UL710 AND ARE RECOMMENDED BY ONE OR MORE OF THE FOLLOWING:
 NSF INTERNATIONAL ETC.



EQUIPMENT SCHEDULE

FAN SPEC
 CONTRACT NO. 7928 ITEM NO. -
 JOB: REHABILITATION
 LOC. 264 ROOSEVELT TRAIL
 PINEHURST, NC 28130
 CLAT. GENERAL CARBAGE & SUPPLY
 CLUST. -

| REV | DATE | BY | CHKD | REVISIONS |
|-----|------|----|------|-----------|
| | | | | |

DATE: 02/14/2021
 TIME: 10:10:00 AM
 USER: LAY

DWG# 15205-102

SHT 2 OF 2

| FAN UNIT NO. | FAN UNIT MODEL # | EXHAUST FAN | | | | | | | | | SUPPLY FAN | | | | | | | | | | |
|--------------|------------------|-------------|------|------|-------|------|------|---|---------|--------|------------|---------|-----|------|------|--------|------|-----|------|-----|-----|
| | | MODEL | TAG | CFM | S.P. | RPM | H.P. | Ø | VOLT | FLA | BLOWER | HOUSING | TAG | CFM | S.P. | RPM | H.P. | Ø | VOLT | FLA | |
| 1 | AHXC8-8 EF-1 | | EF-1 | 3000 | 0.65" | 1346 | 1 | 1 | 115/230 | 13/6.5 | | | | | | | | | | | |
| 2 | HMSF-7 SF-1 | | | | | | | | | | | HMSF-7 | | SF-1 | 2400 | 0.340" | 207 | 1/2 | 1 | 115 | 7.2 |