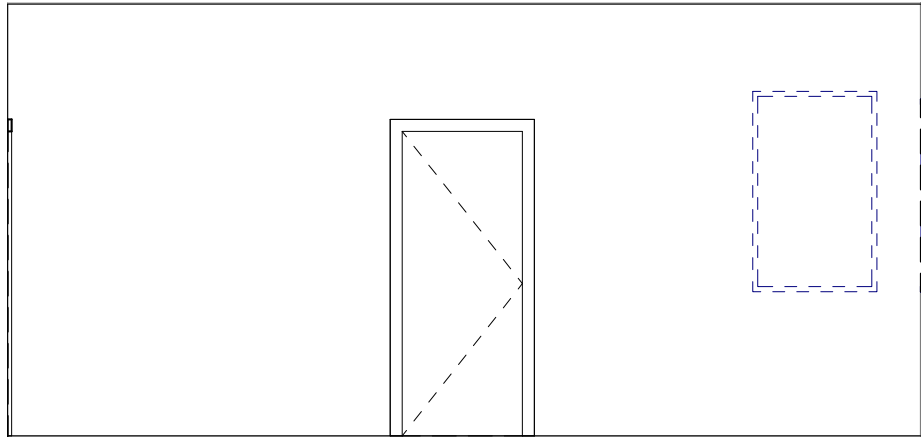
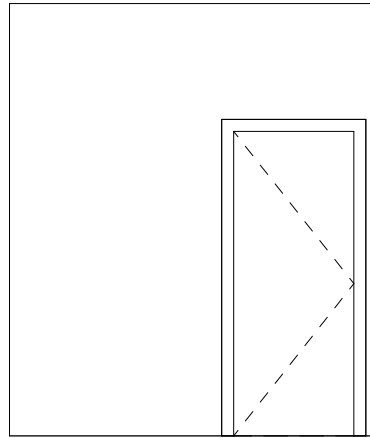


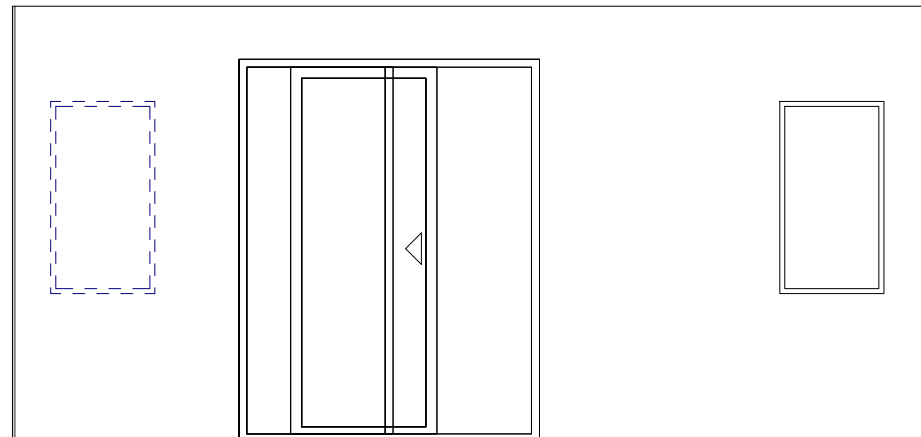
GENERAL NOTES:  
 1. ALL WINDOWS TO BE DEMOLISHED UNLESS OTHERWISE NOTED  
 2. ALL EXISTING DOORS TO REMAIN



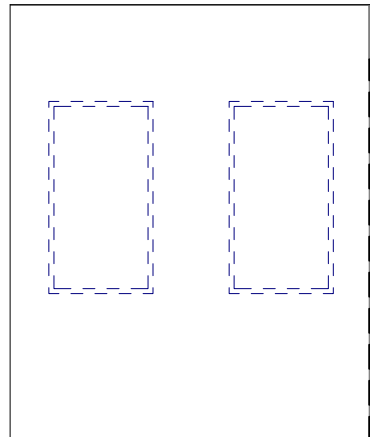
5 Elevation 1 - d  
 1/4" = 1'-0"



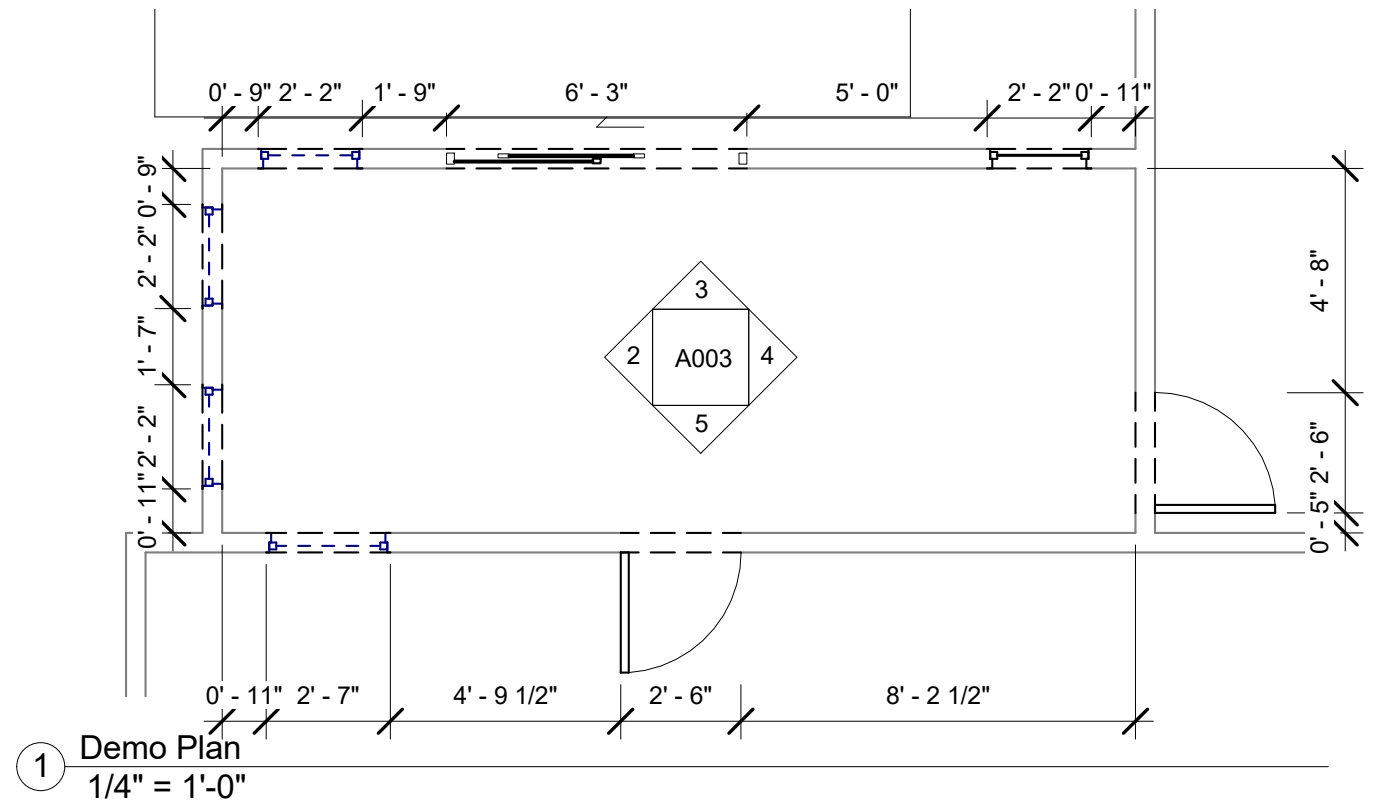
4 Elevation 1 - c  
 1/4" = 1'-0"



3 Elevation 1 - b  
 1/4" = 1'-0"



2 Elevation 1 - a  
 1/4" = 1'-0"



1 Demo Plan  
 1/4" = 1'-0"

27 Caleb Street  
 PORTLAND, MAINE  
 04102

<b>DEMO PLAN OF EXISTING</b>		<b>A003</b>
Project number	CALEB04102	
Date	10/16/2017	
Drawn by	CR	
Checked by	CR	Scale 1/4" = 1'-0"