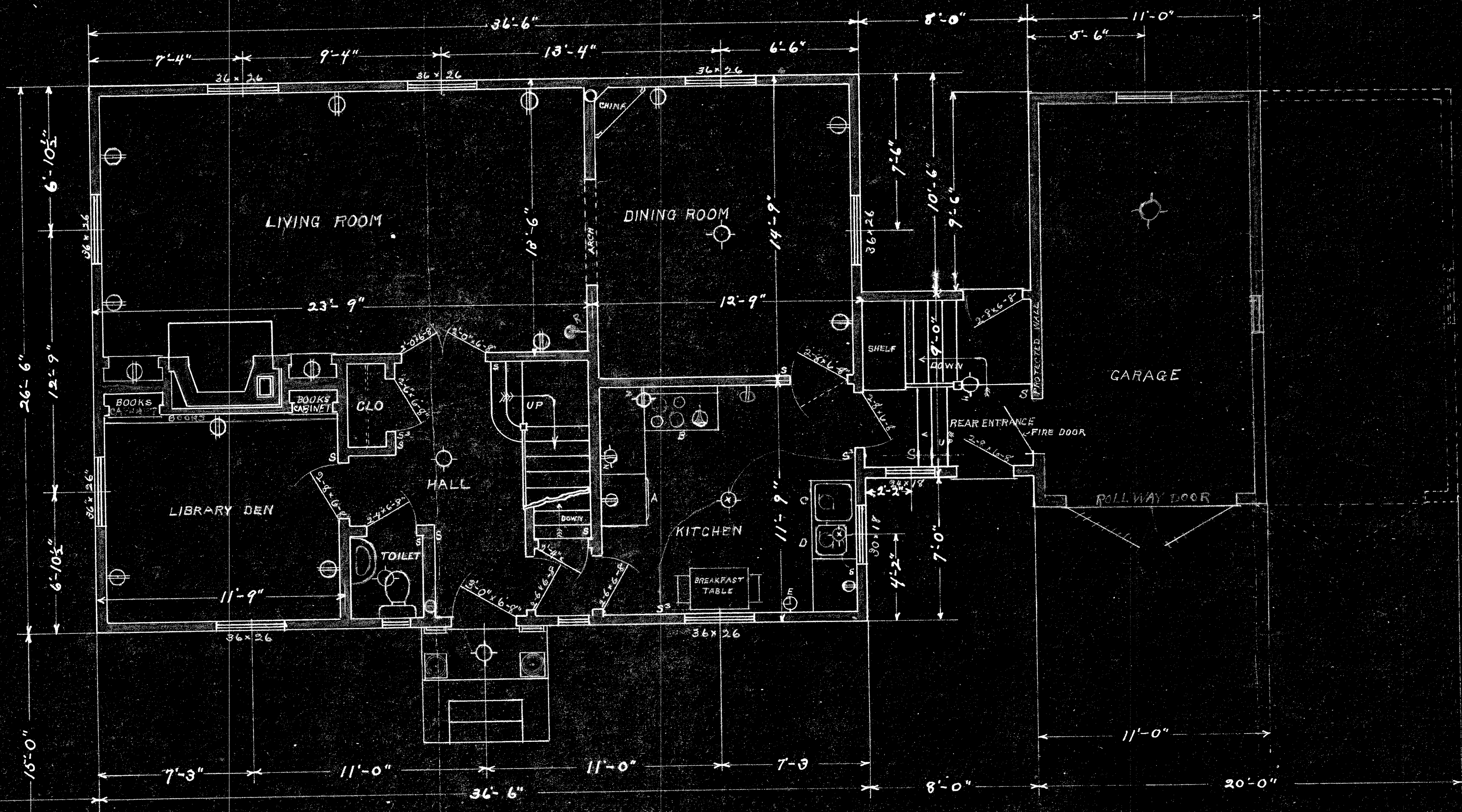


WHITNEY AVENUE
STREET LINE



PLAN OF FIRST FLOOR
 RESIDENCE FOR GEORGE T. DAVIS
 CORNER OF WHITNEY AVE. AND ELIZABETH ROAD
 SCALE 1/4 IN. = 1 FT.

DRAWN BY
Charles M. Mower

STREET LINE
 ELIZABETH ROAD