

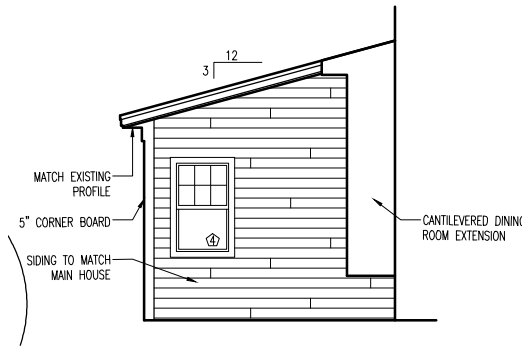
ITEM	DESCRIPTION OF BUILDING ELEMENTS	# & TYPE OF FASTENER	SPACING OF FASTENER
ROOF			
1	Blocking between joists or rafters to top plate, toe nail	3-8d (2 1/2" x 0.113")	—
2	Ceiling joists to plate, toe nail	3-8d (2 1/2" x 0.113")	—
3	Ceiling joists not attached to parallel rafter, laps over partitions, face nail	3-10d	—
5	Rafter to plate, toe nail	2-16d (3 1/2" x 0.135")	—
6	Roof rafters to ridge, valley or hip rafters, toe nail	4-16d (3 1/2" x 0.135")	—
	face nail	3-16d (3 1/2" x 0.135")	—
WALLS			
7	Built-up corner studs	10d (3" x 0.128")	24" o.c.
8	Built-up header, two pieces with 1/2" spacer	16d (3 1/2" x 0.135")	16" o.c. along each edge
9	Continued header, two pieces	16d (3 1/2" x 0.135")	16" o.c. along each edge
10	Continuous header to stud, toe nail	4-8d (2 1/2" x 0.113")	—
11	Double studs, face nail	10d (3" x 0.128")	24" o.c.
12	Double top plates, face nail	10d (3" x 0.128")	24" o.c.
13	Double top plates, minimum 24-inch offset of end joints, face nail in lapped area	8-16d (3 1/2" x 0.135")	—
14	Sole plate to joist or blocking, face nail	16d (3 1/2" x 0.135")	16" o.c.
15	Sole plate to joist or blocking at braced wall panels	3-16d (3 1/2" x 0.135")	16" o.c.
16	Stud to sole plate, toe nail	3-8d (2 1/2" x 0.113")	—
		2-16d (3 1/2" x 0.135")	—
17	Top or sole plate to stud, end nail	2-16d (3 1/2" x 0.135")	—
18	Top plates, laps at corners and intersections, face nail	2-10d (3" x 0.128")	—
19	1" brace to each stud and plate, face nail	2-8d (2 1/2" x 0.113")	—
20	1" x 6" sheathing to each bearing, face nail	2-8d (2 1/2" x 0.113")	—
21	1" x 8" sheathing to each bearing, face nail	2-8d (2 1/2" x 0.113")	—
22	Wider than 1" x 8" sheathing to each bearing, face nail	3-8d (2 1/2" x 0.113")	—
FLOOR			
23	Joist to sill or girder, toe nail	3-8d (2 1/2" x 0.113")	—
24	1" x 6" subfloor or less to each joist, face nail	2-8d (2 1/2" x 0.113")	—
24	nailed	2 staples 1 7/8"	—

4 FASTENER SCHEDULE
FROM IRC R602.3 (1) & (2)

GOLDBERG RESIDENCE WINDOW SCHEDULE						
WINDOW	TYPE	MODEL NO.	EGRESS	UNIT DIM. WIDTH	UNIT DIM. HT.	NOTES
1	CASEMENT	EXISTING	NO	3'-6" V.I.F.	3'-0" V.I.F.	EXISTING TO REMAIN
2	AWNING	AAN24110	NO	2'-7 1/4"	1'-9 1/4"	HP-LOW E4, SDL GRILLES FOR FENESTRATION U-FACTOR OF .29
3	DOUBLE HUNG	ADH2438	NO	2'-3 1/4"	3'-7 1/4"	HP-LOW E4, SDL GRILLES FOR FENESTRATION U-FACTOR OF .28
4	DOUBLE HUNG	ADH2438	NO	2'-3 1/4"	3'-7 1/4"	HP-LOW E4, SDL GRILLES FOR FENESTRATION U-FACTOR OF .29
5	PR DOUBLE HUNG	CUSTOM	NO	5'-0 1/2" V.I.F.	4'-9 1/2" V.I.F.	HP-LOW E4, SDL GRILLES FOR FENESTRATION U-FACTOR OF .29 (MATCH EXIST. HEADER HEIGHT)
6	SKYLIGHT	CUSTOM	NO	10"	30 1/2"	WASCO, eMAX3 GLAZING FOR FENESTRATION U-FACTOR OF .51

NOTES:
 1) ALL WINDOWS TO BE WHITE INTERIOR & EXTERIOR FINISH
 2) ZONE 6 FENESTRATION U-FACTOR FOR WINDOWS MUST BE 0.35 OR LESS; FOR SKYLIGHTS MUST BE 0.60 OR LESS

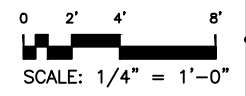
3 WINDOW SCHEDULE
NTS



2 SOUTH ELEVATION (PARTIAL)
1/4"=1'-0"



1 WEST ELEVATION
1/4"=1'-0"



GOLDBERG-BURSON RESIDENCE
 146 WHITNEY AVENUE,
 PORTLAND, ME

DATE: JULY 19, 2013

PROJECT NO: 100

COPYRIGHT:

SHEET TITLE

EXTERIOR
 ELEVATIONS &
 SCHEDULES

A102