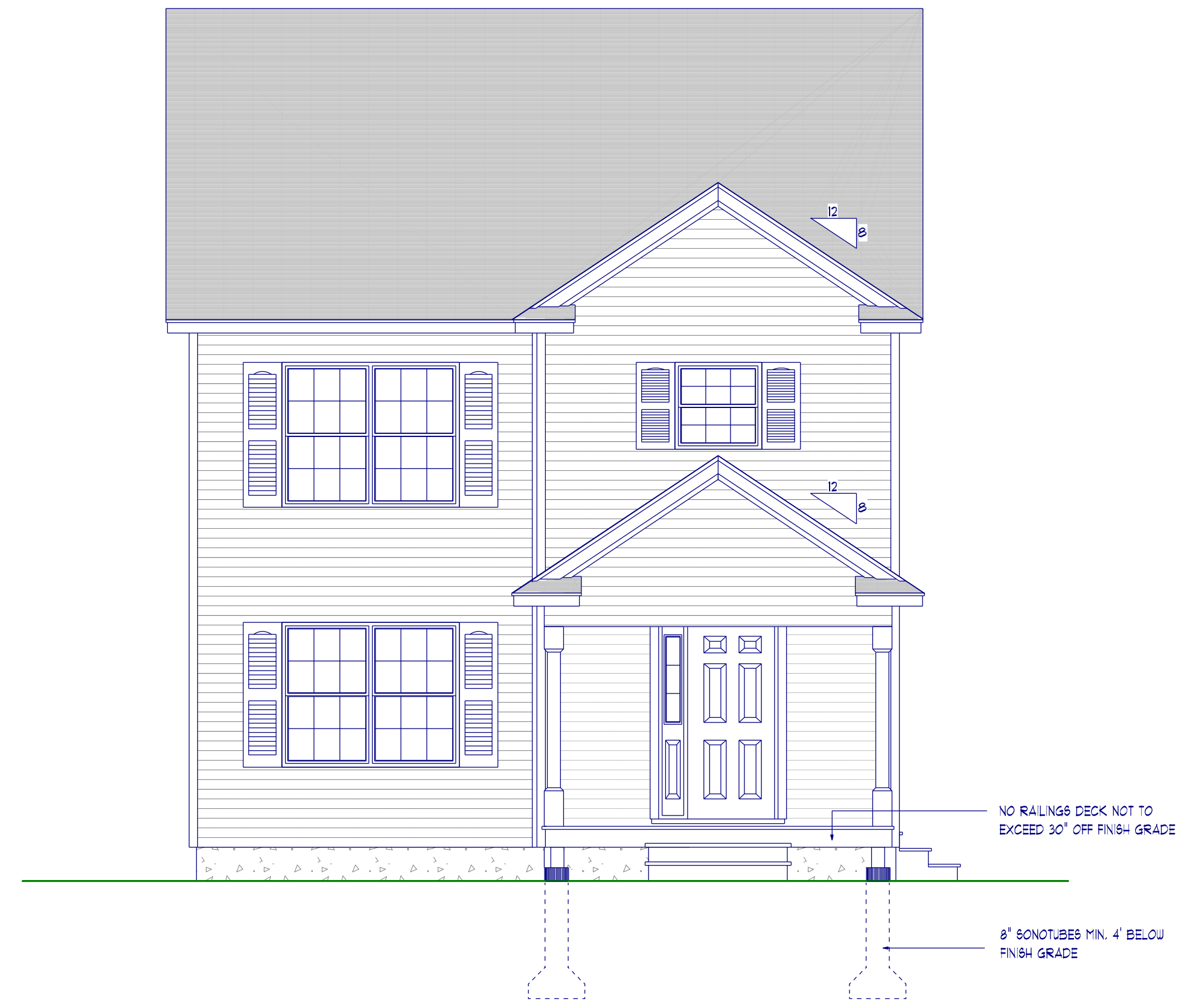




**Left Elevation**  
1/4" = 1'-0"



**Front Elevation**  
1/4" = 1'-0"




**Right Elevation**  
1/4" = 1'-0"



**Rear Elevation**  
1/4" = 1'-0"



 <b>ROBIE BUILDERS, LLC</b>		1,488 SF Two Story	
New Homes Additions Excavation FREE Estimates Fully Insured <small>Find us on Facebook</small>		<b>Jarod Robie, Owner/Sales</b> 1 Diamond Point Road   P.O. Box 1508 Windham, ME 04062 C: 207-831-3582 O: 207-892-0650 F: 207-892-1340 JarodRobie@hotmail.com	
Plan For: <b>32 Mass Ave. Portland</b>		<b>1</b> <b>3</b>	
Drawn by: <b>Wayne Paradis</b> <small>892-3424</small>		Mar. 26, 2018	