



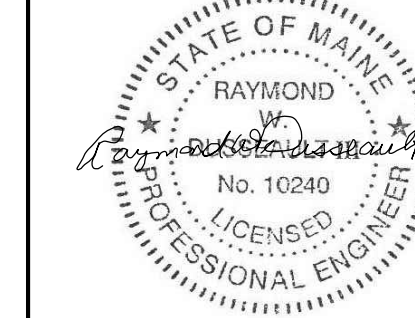
100 Crossing Blvd
Framingham, Ma
tel 508 270 1400

Architect



40 TREMONT STREET, SUITE 62
DUXBURY, MASSACHUSETTS 02332
PHONE: (781) 452-7121
FAX: (860) 264-1628
WEBSITE: www.phasezerodesign.com

Seal



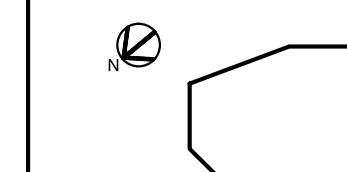
Consultant



Revisions

No.	Date	Issued for
11/22/13		90% Review Set
11/24/14		Bid and Permit
04/03/14		ADDENDUM 01

Key Plan



Title

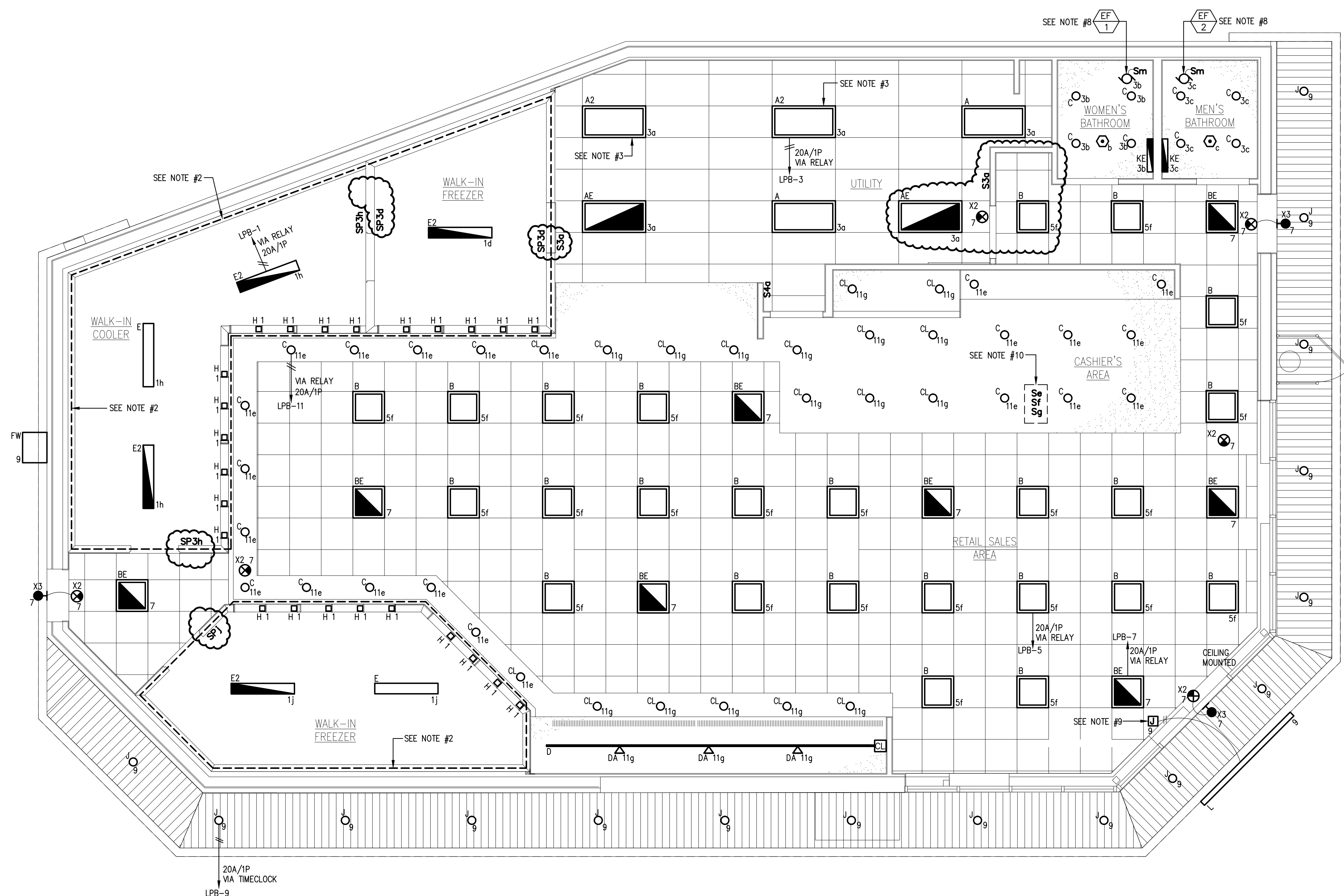
ELECTRICAL:
LIGHTING PLAN &
NOTES

Date

Drawing No.

E1.01

- ELECTRICAL NOTES:**
- NOT USED
 - ELECTRICAL CONTRACTOR TO INSTALL ALL WIRING IN THIS AREA ABOVE WALK-IN COOLER/STORAGE AND POKE DOWN INTO ALL LIGHTING FIXTURES SO THAT THERE IS NO EXPOSED PIPING ON CEILING OF WALK-IN COOLER. ANY PENETRATION THAT GOES THROUGH COOLER CEILING OR WALL NEEDS TO BE SEALED WITH APPROPRIATE CAULKING TO MAINTAIN COOLER INTEGRITY.
 - ELECTRICAL CONTRACTOR TO FURNISH AND INSTALL PLASTIC LENS (TYPICAL OF 2).
 - SEAL LIGHTING FIXTURES AT CEILING TO MAINTAIN COOLER/FREEZER TEMPERATURE.
 - ALL OVERHEAD WIRING SHALL BE IN RIGID CONDUIT WITH JUNCTION BOXES, WIRE WHIPS SHALL BE EMT.
 - CONNECT EXIT SIGNS AND EMERGENCY BALLAST TO THE UNSWITCHED LEG OF THE CIRCUIT.
 - REFER TO ARCHITECTURAL DRAWINGS FOR EXACT QUANTITIES AND LOCATIONS FOR BOTH INTERIOR AND EXTERIOR LIGHTING FIXTURES.
 - E.C. TO REFER TO MECHANICAL DRAWINGS FOR EXACT LOCATION OF EF-1 UNITS. E.C. TO ALSO CONNECT EXHAUST FAN TO THE OCCUPANCY SENSOR FOR CONTROLS.
 - JUNCTION BOX SHALL BE LOCATED IN THE ENTRANCE CEILING AND BE ACCESSIBLE, E.C. TO COORDINATE LOCATION IN THE FIELD WITH ARCHITECT'S DRAWINGS.
 - INSTALL AREA LIGHT TOGGLE SWITCHES IN CHECKOUT CASEWORK. E.C. TO FIELD COORDINATE LOCATION WITH ARCHITECT/OWNER PRIOR TO START INSTALLATION.



ELECTRICAL: LIGHTING PLAN
SCALE: 1/4"=1'-0"