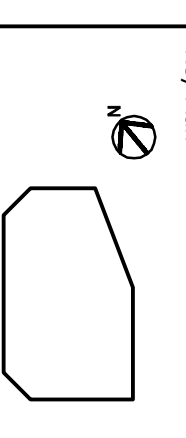


No.	Date	Revised For
1	11/27/13	50% Review Set
1	02/10/14	Final Permit
1	02/10/14	UNDERGROUND SERVICES

ITEM	DESCRIPTION	QUANTITY	UNIT
1	CONCRETE DUCT BANK (SEE DETAIL 2)	1	LINEAL FOOT
2	CONCRETE RISER PIPE (SEE DETAIL 1)	1	PIECE
3	UNDERGROUND ELECTRICAL SERVICE & SPARE	1	LINEAL FOOT
4	UNDERGROUND ELECTRICAL SERVICE & SPARE	1	LINEAL FOOT
5	UNDERGROUND ELECTRICAL SERVICE & SPARE	1	LINEAL FOOT
6	UNDERGROUND ELECTRICAL SERVICE & SPARE	1	LINEAL FOOT



The ELECTRICAL SITE PLAN, DETAILS & NOTES

Drawing No. **E4.01**

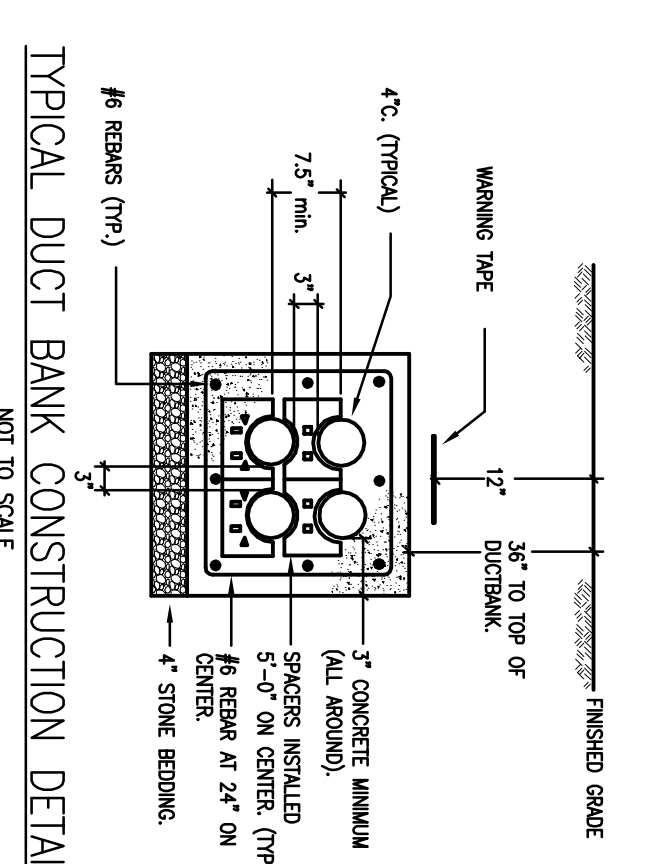
NOTES:

1. ALL ELECTRICAL SERVICES TO EXISTING BUILDING SHALL BE REMOVED. COORDINATE WITH LOCAL UTILITIES FOR SHUT DOWNS AND REMOVAL OF EXISTING SERVICES.
2. NOT USED.
3. PROVIDE NEW UNDERGROUND ELECTRICAL, TELEPHONE, CATV AND FIRE ALARM SERVICES. RISER POLE, POLE MOUNTED TRANSFORMERS, AND FUSED CUT-OUTS BY LOCAL UTILITY CO. ROUTE NEW SERVICES BELOW GRADE AS INDICATED. COORDINATE EXACT LOCATIONS AND POWER SHUT OFFS WITH CONTRACTOR. COORDINATE FINAL CONNECTION REQUIREMENTS AND REPRESENTATIVE FIELD ENGINEERS.
4. P/C SCHEDULE 40 CONDUITS, ENCASED IN CONCRETE ENVELOPE FROM PUMP ISLAND TO ACROSS DRIVEWAY/PARKING STALLS UNTIL CONDUITS ARE PASSING THE EXTERIOR WALLS OF THE BUILDING.
5. REFER TO DETAILS 5 AND 6 ON DWG. E3.03 FOR UNDER CANOPY AND TOLD STORAGE POWER AND NOTES. PROVIDE CIRCUITS TO PANEL TRYS AND PROVIDE CIRCUIT BREAKERS AND FUSES AS REQUIRED. AS COORDINATED ON THE QUANTITY OF TANKS BEING INSTALLED. REFER TO THE ONIT PLAN FOR QUANTITY OF TANKS.
6. P/C SCHEDULE 40 CONDUIT, ENCASED IN CONCRETE ENVELOPE FOR THE LENGTH OF THE ENTRANCE. TYPICAL FOR ALL CONDUITS BELOW ROADWAY/DRIVE LANE.
7. E.C. SHALL PROVIDE FOR DEMOLITION WORK REQUEST ORDER FROM THE LOCAL UTILITY COMPANY PRIOR TO COMMENCEMENT OF ANY NEW WORK.
8. E.C. SHALL PROVIDE FOR TEMPORARY POWER WORK REQUEST ORDER FROM THE LOCAL UTILITY COMPANY PRIOR TO COMMENCEMENT OF ANY NEW WORK.
9. NOT USED.
10. 1/1/4" WITH LOW VOLTAGE CONDUCTORS. CONDUIT SHALL RUN FROM LOW VOLTAGE CABINET LOCATED IN THE UTILITY AREA TO THE CANOPY DECK WHERE THE SHELFLITE DISH IS LOCATED. E.C. TO COORDINATE FINAL LOCATION IN THE FIELD.
11. DISPENSER DATA - OMNI - G11802 - SUPPLIED BY CUMBERLAND FARMS WAREHOUSE VEDDER-ROOT - OMNI - G11802 - SUPPLIED BY CUMBERLAND FARMS WAREHOUSE INTERCOM - OMNI - G11802 - SUPPLIED BY CUMBERLAND FARMS WAREHOUSE VSA SCREEN - BELDEN 7928A - SUPPLIED BY J.W. KENNEDY - DELIVERED WITH THE DISPENSERS OR PRODUCT PRICING DEPENDS ON WHAT THE CPM REQUESTS MESSAGE BOARD - FIBER OPTICS - SUPPLIED BY WATCH FIRE - DIRECT SHIPPED TO SITE. E.C. TO COORDINATE THE QUANTITY AND SIZE OF CONDUITS NEEDED FOR EACH SYSTEM INDICATED ABOVE. CONDUITS FROM THE P/C SHALL BE STRAPPED WITH THE C/P SYSTEM INDICATED STATION POLE AREA IN THE FIELD WITH THE O.C. AND/OR C/P CONTRIBUTOR.

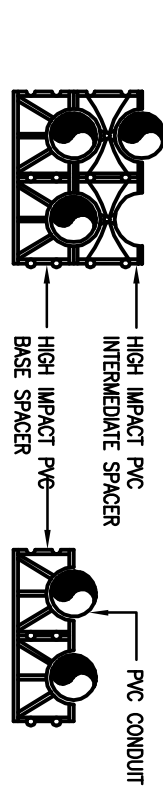
NOTE:
ALL EXISTING CIRCUITRY FOR EXISTING SITE LIGHTING, Pylon SIGNS, DIRECTIONAL SIGNS, POWER, ETC. AS WELL AS CONTROLS SHALL BE EXTENDED TO NEW C/P CABINET.

NOTE:
ELECTRICAL CONTRACTOR SHALL COORDINATE ALL SITE LIGHTING AND ELECTRICAL DISTRIBUTION WITH CUMBERLAND FARMS AND LSI SITE LIGHTING PLANS. THE IN-ALL RELOCATED AND NEW SITE LIGHTING TO THE EXISTING SITE LIGHTING CIRCUIT AND CONTROLS AS REQUIRED.

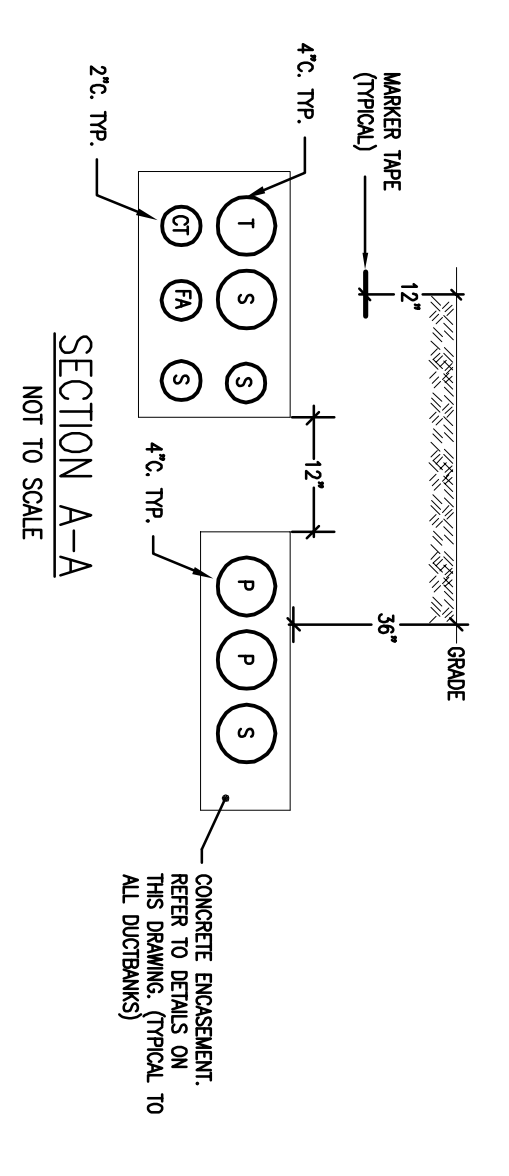
REFER TO SHEET E3.03 FOR SITE DETAILS, PUMPS & STORAGE TANKS. POWER CIRCUITS.



- NOTES:**
- 1) ALL BASE AND INTERMEDIATE SPACERS TO BE INTERLOCKING TYPE.
 - 2) ALL SPACERS TO MAINTAIN 3" SPACE WITH 4" DIA. P/C.
 - 3) ALL SPACERS TO BE INSTALLED AT 5" ON CENTER LONG ENHANCE RAIL.
 - 4) ALL SPACERS TO BE INSTALLED AT 2" ON CENTER LONG ENHANCE RAIL.

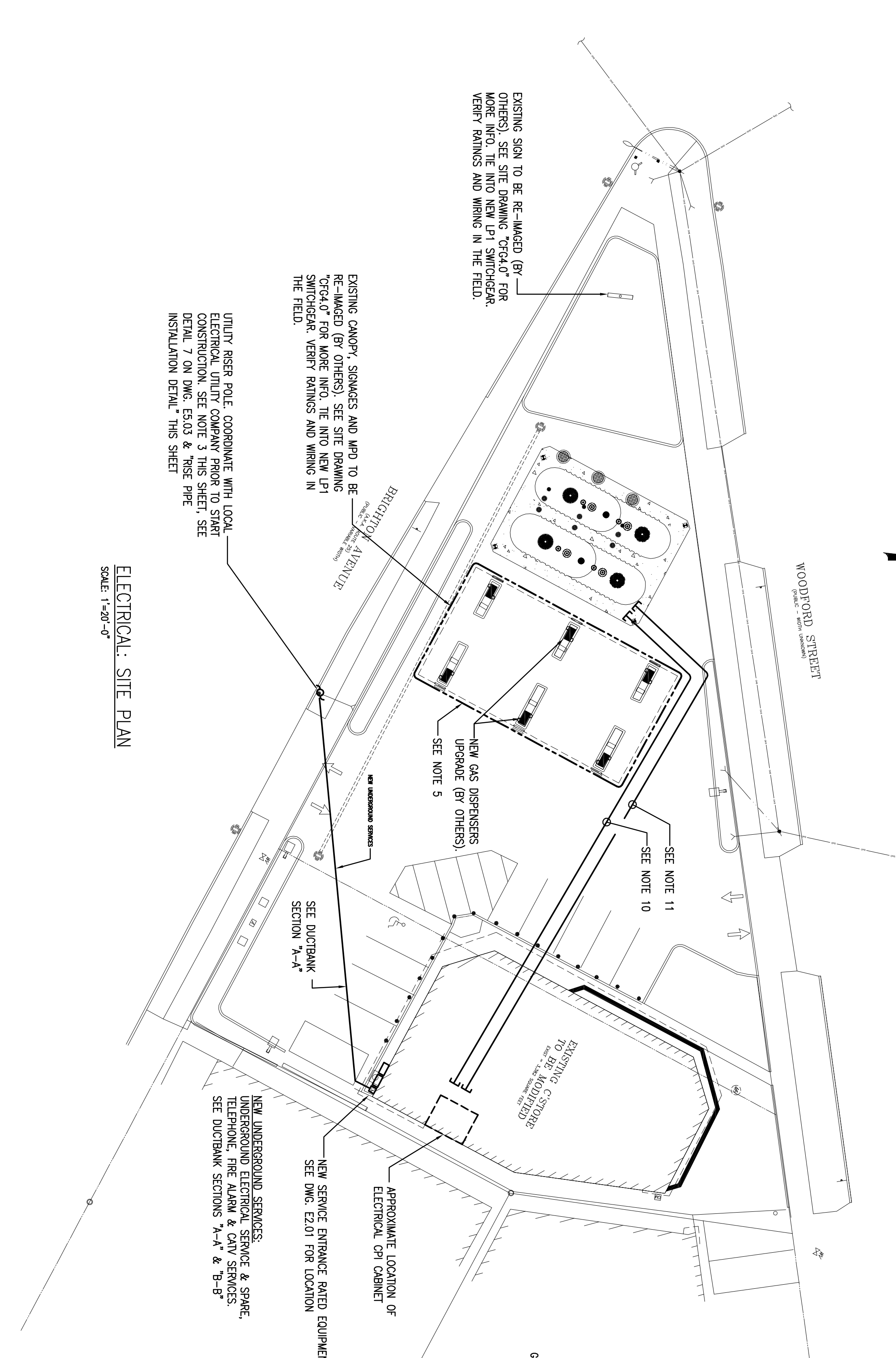


TYPICAL SPACER DETAILS
NOT TO SCALE

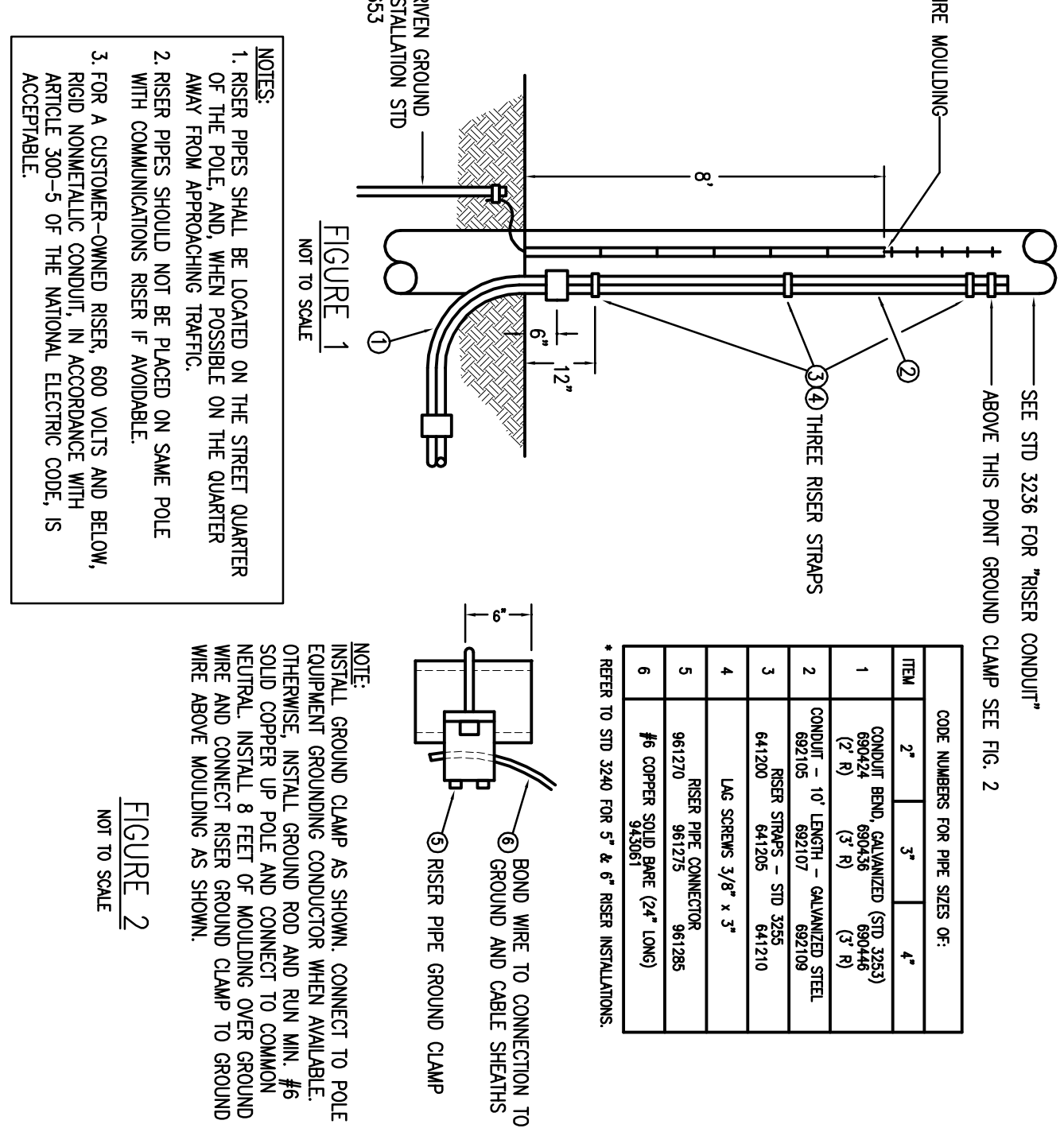


- DUCT BANK LEGEND**
- P = PRIMARY SERVICE CABLES
 - E = SECONDARY SERVICE CABLES
 - S = SPARE (W/PULL STRUNG)
 - T = TELEPHONE SERVICE
 - CT = CABLE TV SERVICE
 - F = FIBER OPTIC CABLE TO OPT LOPE (NEW)
 - FA = FIRE ALARM CABLE TO OPT LOPE (NEW)

2 ELECTRICAL - DUCK BANK DETAIL
SCALE: N.T.S.



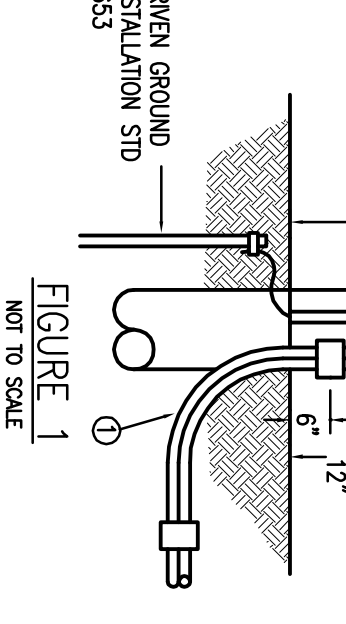
ELECTRICAL: SITE PLAN
SCALE: 1"=20'-0"



RISER PIPE INSTALLATION DETAIL (IF APPLICABLE)
NOT TO SCALE

CODE NUMBERS FOR PIPE SIZES OF:

ITEM	SIZE	CODE
1	CONCRETE DUCT BANK (SEE DETAIL 2)	000000
2	CONCRETE RISER PIPE (SEE DETAIL 1)	000000
3	UNDERGROUND ELECTRICAL SERVICE & SPARE	000000
4	UNDERGROUND ELECTRICAL SERVICE & SPARE	000000
5	UNDERGROUND ELECTRICAL SERVICE & SPARE	000000
6	UNDERGROUND ELECTRICAL SERVICE & SPARE	000000



NOTE:
INSTALL GROUND CLAMP AS SHOWN. CONNECT TO POLE EQUIPMENT GROUNDING CONDUCTOR WHEN AVAILABLE. OTHERWISE, INSTALL GROUND ROD AND ROLL MAN. #8 COPPER WIRE AT 8 FEET OF CONDUIT OVER GROUND. WIRE AND CONNECT RISER GROUND CLAMP TO GROUND WIRE ABOVE MOUNTING AS SHOWN.

FIGURE 2
NOT TO SCALE