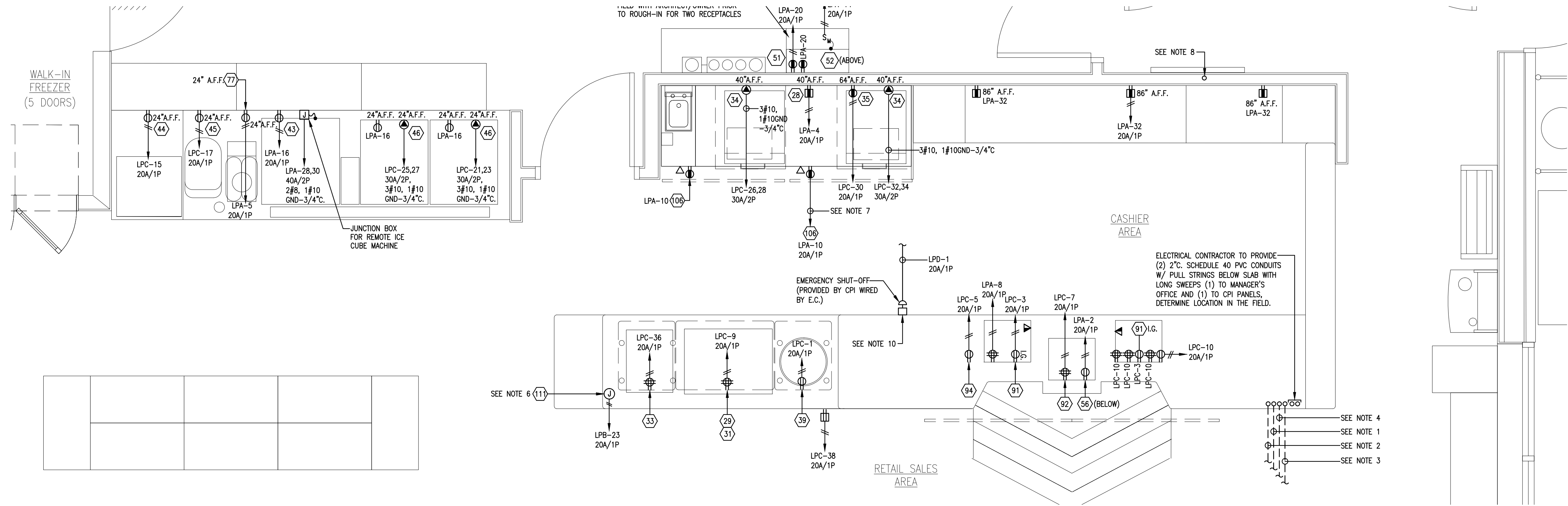
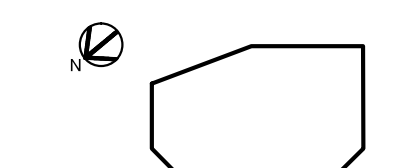


No.	Date	Issued for
11/22/13		90% Review Set
11/24/14		Bid and Permit



ELECTRICAL- PARTIAL POWER & SIGNAL PLAN

SCALE: 1/2"=1'-0"

- ELECTRICAL NOTES:**
- (1) 2" POWER CONDUIT FOR CHECK-OUT BRANCH CIRCUITS FROM CPI PANEL ASSEMBLY.
 - 2" CONDUIT FROM MAIN BACKBOARD TO CHECK OUT COUNTER FOR DATA WIRING.
 - 3/4" CONDUIT FOR ISO GROUND CIRCUIT.
 - 3/4" CONDUIT FROM CHECK OUT AREA TO MANAGER'S DESK FOR EXTENSION OF ISO GROUND CIRCUIT.
 - RECEPTACLE FOR LOTTERY TERMINAL SHALL BE ORANGE IN COLOR AND ONLY USED FOR LOTTERY USE. RECEPTACLE TO BE MANUFACTURED BY HUBBELL HBL4792.
 - JUNCTION BOX FOR FUTURE DIGITAL ORDER TERMINAL. COORDINATE LOCATION IN THE FIELD WITH OWNER.
 - DUPLEX RECEPTACLE AND DATA PORT PROVIDED FOR DIGITAL MENU BOARD TO BE MOUNTED IN SOFFIT. THE DISTANCE FROM THE TOP OF THE OUTLET TO THE UPPER SOFFIT SHALL BE 2". DATA CABLES TO RUN TO MANAGER'S DESK.
 - ELECTRICAL CONTRACTOR TO FURNISH AND INSTALL 3" CONDUIT WITH PULL STRING IN SLAB, CONDUIT TO DATA D-MARC.
 - ELECTRICAL CONTRACTOR TO PROVIDE (4) 1" SCHEDULE 40 PVC, CONDUIT BELOW SLAB WITH LONG RADIUS SWEEP. LOCATION TO BE DETERMINED IN THE FIELD.
 - 3/4" SCHEDULE 40 PVC CONDUIT WITH PULL STRING IN SLAB FOR "CPI" EMERGENCY SHUT-OFF (PROVIDED BY CPI, WIRED BY ELECTRICAL CONTRACTOR).
 - REFER TO THE ARCHITECTURAL DRAWINGS FOR EXACT MOUNTING HEIGHT FOR THE MICROWAVE RECEPTACLE.
 - TEMPERATURE SENSOR TO BE PROVIDED FOR WALK-IN COOLER/FREEZER AND SANDWICH COOLER (PROVIDED BY CP, WIRED BY ELECTRICAL CONTRACTOR).
 - DISCONNECT SWITCHES FOR ALL UC UNITS IN WALK-IN'S ARE SUPPLIED BY THE MECHANICAL CONTRACTOR, ELECTRICAL CONTRACTOR TO INSTALL AND WIRE DISCONNECT SWITCHES.
 - FINAL LOCATION FOR GAS PUMP MONITORS AND SECURITY MONITOR TO BE DETERMINED IN THE FIELD WITH LOCAL AHJ AND STORE OWNER. QUANTITY OF MONITORS IS DETERMINED BY THE QUANTITY OF GAS PUMPS. (4) PUMPS PER MONITOR. (1) SECURITY MONITOR.
 - ELECTRICAL CONTRACTOR TO FIELD COORDINATE MOUNTING HEIGHT FOR ELECTRIC WATER HEATERS WITH ARCHITECTURAL PLANS.

CABLE & CONDUIT SCHEDULE				
CONDUIT	SIZE	WIRE	PURPOSE	REMARKS
a	3/4"	#18/3 TWISTED SHIELDED	TEMPERATURE SENSOR DEFROST COIL IN COOLER/FREEZER	
b	3/4"	#18/3 TWISTED SHIELDED	DOOR SWITCH	
c	3/4"	#18/3 TWISTED SHIELDED	REFRIGERATION CIRCUIT TEMP. SENSOR	

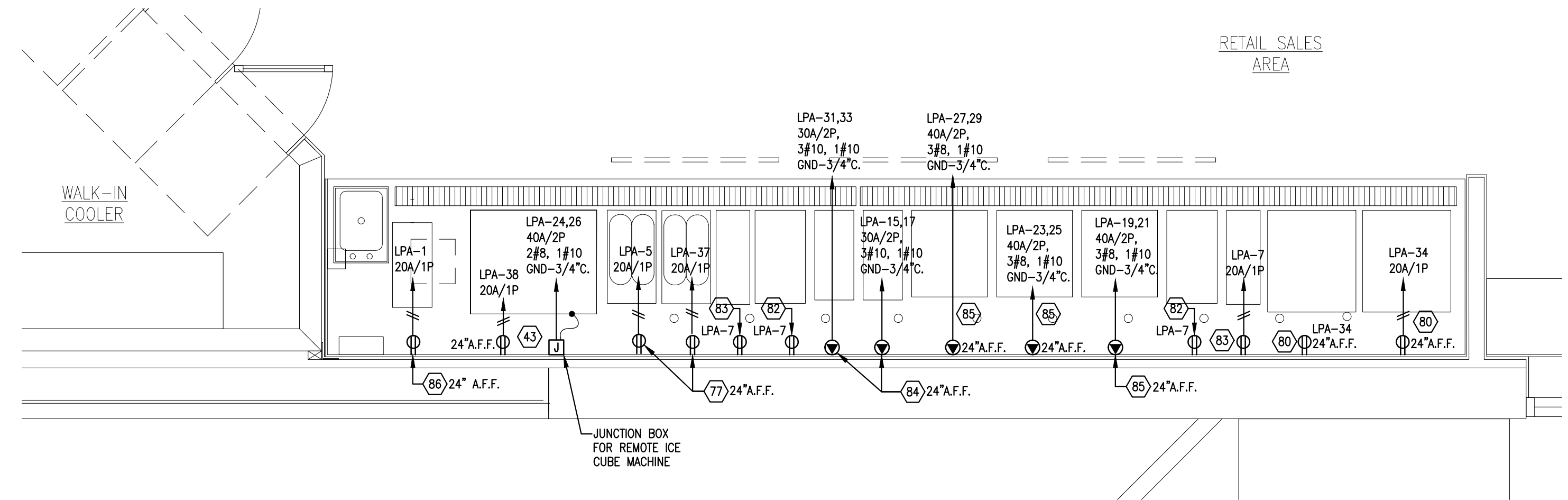
LEGEND

	COIL TEMPERATURE SENSOR
	SPACE TEMPERATURE SENSOR
	DOOR SWITCH

ALL WIRING TO REFRIGERATION CONTROL CABINET (FIELD VERIFY LOCATION IN UTILITY ROOM)

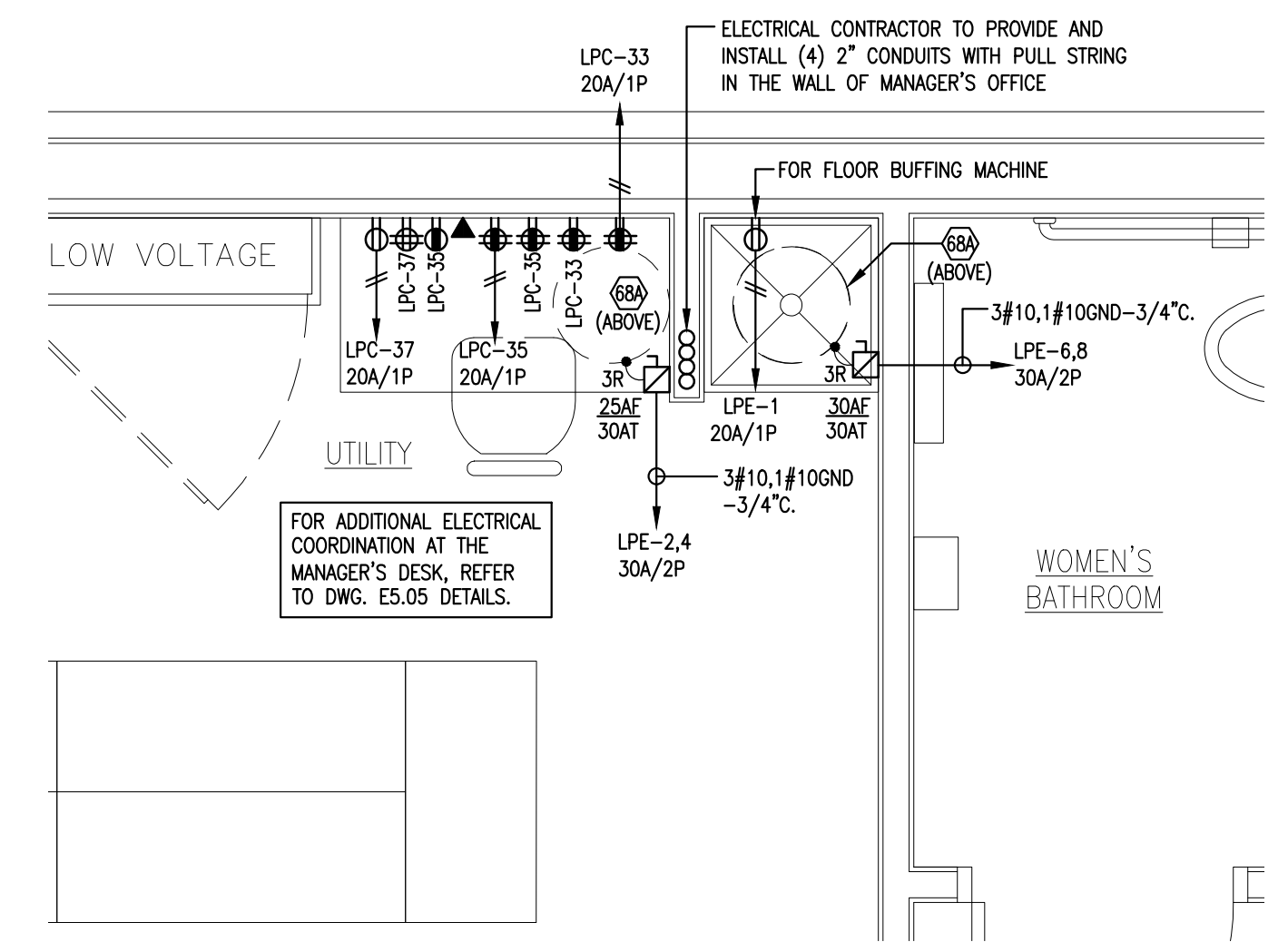
REFER TO REFRIGERATION EQUIPMENT MANUFACTURER'S SPECIFICATIONS FOR TERMINATION LOCATIONS OF TEMPERATURE SENSORS

ALL 15 AND 20A KITCHEN CIRCUITS SHALL BE PROTECTED WITH GFI CIRCUIT BREAKERS. A KITCHEN AREA SHALL BE ANY AREA WITH A SINK AND PROVISIONS FOR COOKING.



ELECTRICAL- PARTIAL POWER & SIGNAL PLAN

SCALE: 1/2"=1'-0"



ELECTRICAL- PARTIAL POWER & SIGNAL PLAN

SCALE: 1/2"=1'-0"